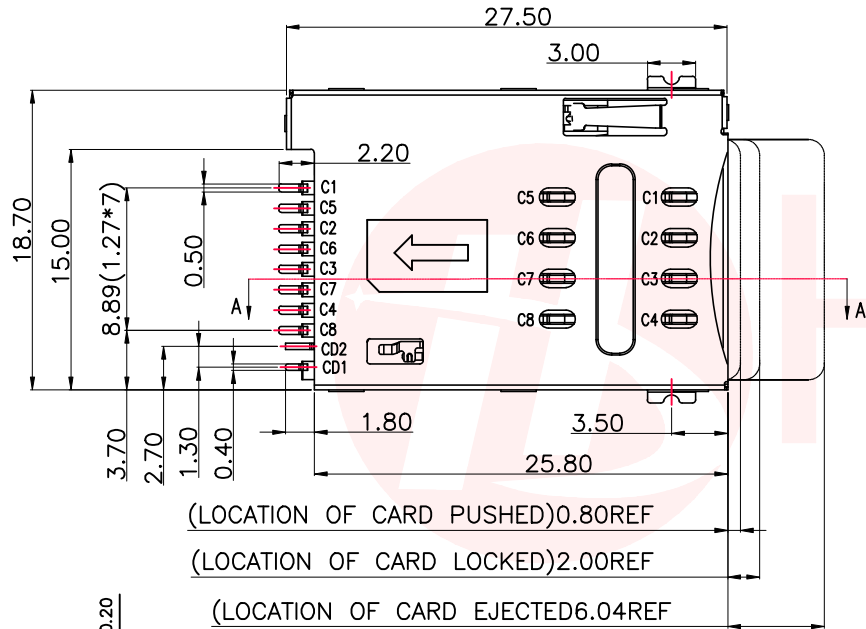
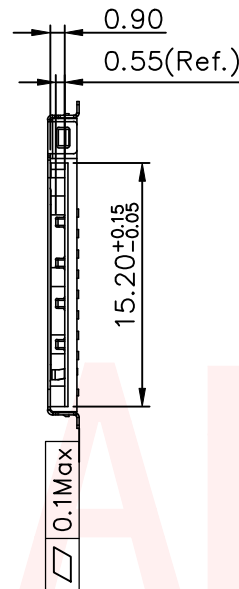
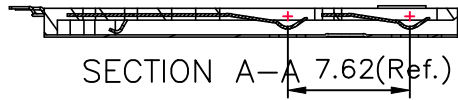
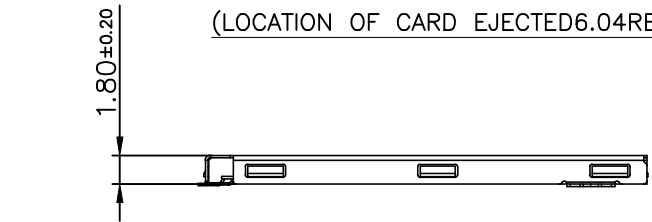




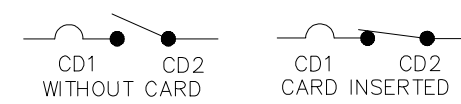
REV.	ECN NO OR DESCRIPTION	REVISED	DATE



(LOCATION OF CARD PUSHED)0.80REF
 (LOCATION OF CARD LOCKED)2.00REF
 (LOCATION OF CARD EJECTED)6.04REF

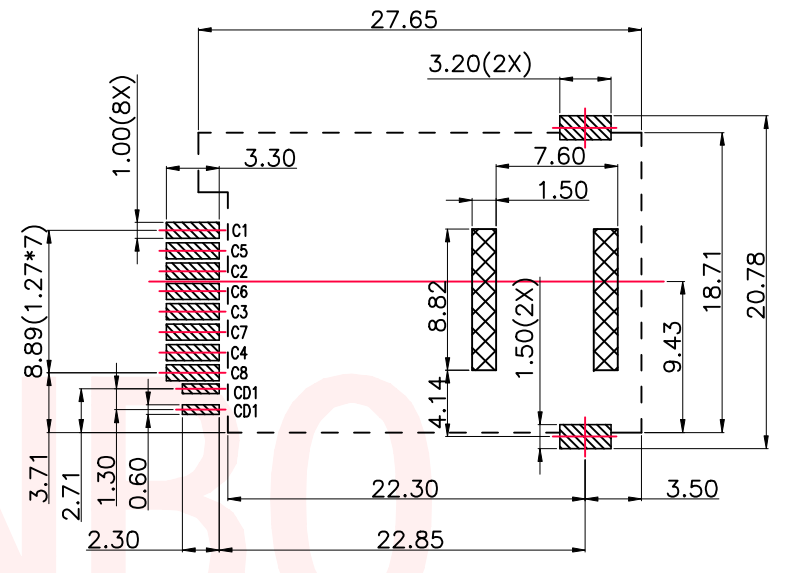


ELECTRIC FUNCTION	DETECT SWITCH
WITHOUT CARD	OPEN
CARD INSERTED	CLOSED



SWITCH OPERATION DIAGRAM

NOTES:
MATERIAL:
 Insulator: High Temperature Thermoplastic, UL 94V-0.
 Contact: Copper Alloy
 CD PIN: Copper Alloy
 Shell: STAINLESS
Electrical:
 Current Rating :0.5A AC/DC max.
 Voltage Rating :30V AC/DC
 Ambient Temperature Range :-20°C~+60°C
 Storage Temperature Range :-40°C~+70°C
 Ambient Humidity Range :95% R.H. Max.
 Contact Resistance:100mΩ max.
 Insulation Resistance:1000MΩ min./500VDC
 Mating Cycles:5,000 Insertions
 Temperature: 260°C ±5°



RECOMMENDED P.C.B LAYOUT
 COMPONENT SIDE(TOLERANCE ±0.05)
 ▨ PAD AREA
 ▤ KEEP AREA
 ▩ KEEP OUT AREA

ITEM	PART NAME	Q'TY	MATERIAL	FINISH
1	HOUSING	1	Hi-temp Thermoplastic	Black UL94V-0
2	SHELL	1	Stainless Steel	SMT area:Gold plated
3	DATA CONTACT	1	Copper Alloy	Contact area:Gold plated
4	HEART CAM	1	Hi-temp Thermoplastic	Black UL94V-0
5	COLL SPRING	1	SWP.	
6	CAM PIN	1	Stainless Steel	
7	CD2 SWITCH	1	Copper Alloy	Contact area:Gold plated

UNLESS OTHERWISE SPECIFIED TOLERANCES		东莞市汉博电子科技有限公司 DONGGUAN HANBO TECHNOLOGY CO., LTD	
DECIMALS:	ANGLES:	TITLE	Mini Sim Card push push 8+2P SMT 无桩
X :±0.30	X :±2°	DWN	xiong PART NO. SIM-1007-P10
X.X :±0.20	X.X :±1°	CHKD	lee SCALE:1:1 UNIT: mm
X.XX :±0.10		APVD	wang SIZE: A4 SHEET:10F 1 REV: A4
CUSTOMER COPY			