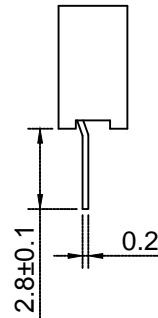
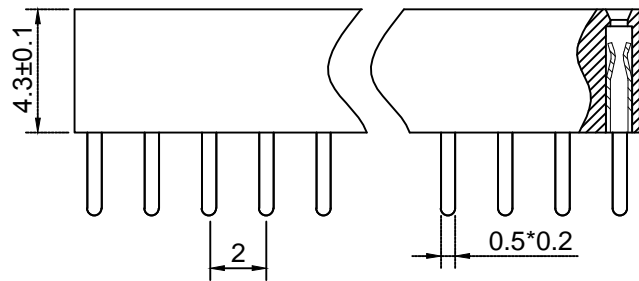
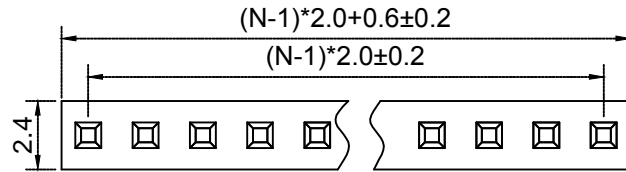


A B C D E F



N=PIN数



P.C.B LAYOUT

Material材料

Insulator 塑胶: PA46 (UL 94V-0)

Contact Material 端子: Phosphor Bronze 磷青铜

Contact plating 表面渡层: Au or Sn over 50u" Ni
里镍外金 or 锡

Electrical Characteristics 电气特性

Current rating 额定电流: 1.0Amps

Dielectric Withstanding Voltage 耐压:

AC 1000V for 1 Minute.

Insulator Resistance 绝缘电阻: 1000MΩ Min.

Contact Resistance 接触电阻: 20MΩ Max.

Operating Temperature 工作温度: -40℃ ~ +105℃

Max. Processing Temp 瞬时温度:

230℃ for 30-60 seconds

(260℃ for 10 seconds)

d
c
b
a

d
c
b
a

A B C D E F

		PM2.0 1*N P		上海洲日电子有限公司 Shanghai Zhouri Electronics CO.,LTD		
X.	±0.3	±5°	上海康司玛电子设备进出口有限公司 Shanghai KangSiMa Eletronic Equipment import and export Co.,LTD			
X.X	±0.2	±3°	20171018 A/O		TEL:86-21-34975176/51571121	
X.XX	±0.15		ZR20171018-281			
	201171018		物料编号		1:1	mm 图幅 A4
	201171018				1	1
	201171018					