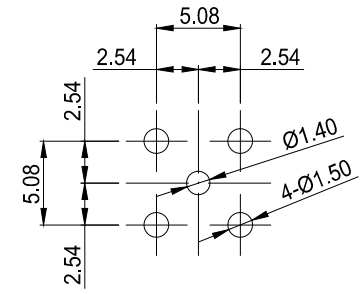
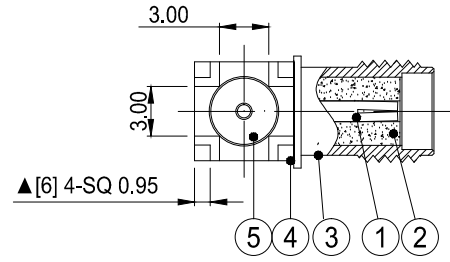
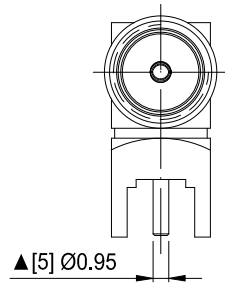
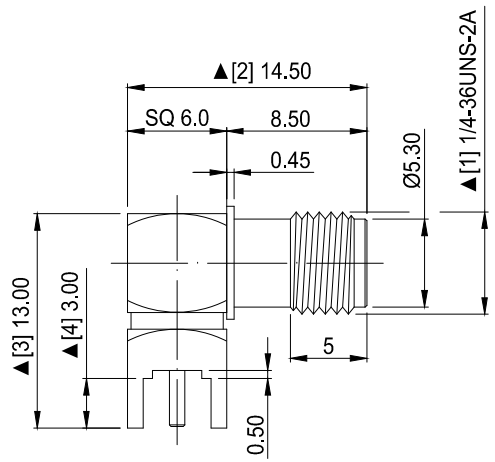


1	2	3	4	5	6	7	8
REVISION		DESCRIPTION		DATE	DRAFTER		
A0		FIRST RELEASE		19.12.04	Mark		



RECOMMENDED PCB LAYOUT DIMENSIONS

1. Electrical Characteristics
 - 1.1 Impedance: 50 Ohm
 - 1.2 Working Frequency: DC - 6 GHz
 - 1.3 S. W. R. : ≤1.5
 - 1.4 Working Voltage: 335V / max
 - 1.5 Insulation Resistance: 5000 Mohm
 - 1.6 Contact Resistance: Center Contact: 3mohm
 - 1.7 Outer Contact: ≤2 mohm
2. Environmental
 - 2.1 Working Temperature Range: - 55 . C ~ +125. C

No.	PART NAME	SPECIFICATION DESCRIPTION	Q'TY
5	INSULATOR_2	PTFE, WHITE	1
4	BODY_2	BRASS, GOLD	1
3	BODY_1	BRASS, GOLD	1
2	INSULATOR_1	PTFE, WHITE	1
1	CENTER CONTACT	FEMALE, BRASS, GOLD	1

GENERAL TOLERANCE: LINEAR: X ±0.30 X.X ±0.20 X.XX ±0.15 X.XXX ±0.10 ANGLE: X° ±4.00° X.X° ±3.00° X.XX° ±2.00° X.XXX° ±1.00°		<p>HJ-Tech 东莞市皇捷通讯科技有限公司 电话: 0769-83328111</p> <p>FILE NAME: 零件图 TITLE: 射频连接器组件</p> <p>ENG/DATE: Mark/19.12.04 90度SMA母头母针FOR PCB, 镀金 SQ6.0*L14.5*H13.0, 螺牙本体有0.45档板, 脚长3.0mm, 针OD:0.95mm</p> <p>CHE/DATE: . P/N: HJ-2LC15SF098</p> <p>APP/DATE: . UNIT: mm SCALE: 1:1 REVISION: A0 SHEET: 1/1</p>	
---	--	---	--

COMPLIANCE WITH THE REQUIREMENT: RoHS; HF; SONY SS-00259; OTHERS
*NO USING ESTRICTED AND BANNED SUBSTANCE