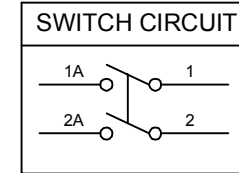
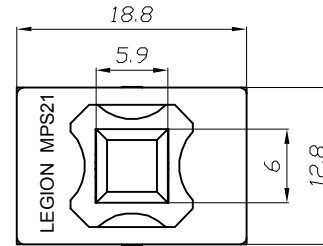
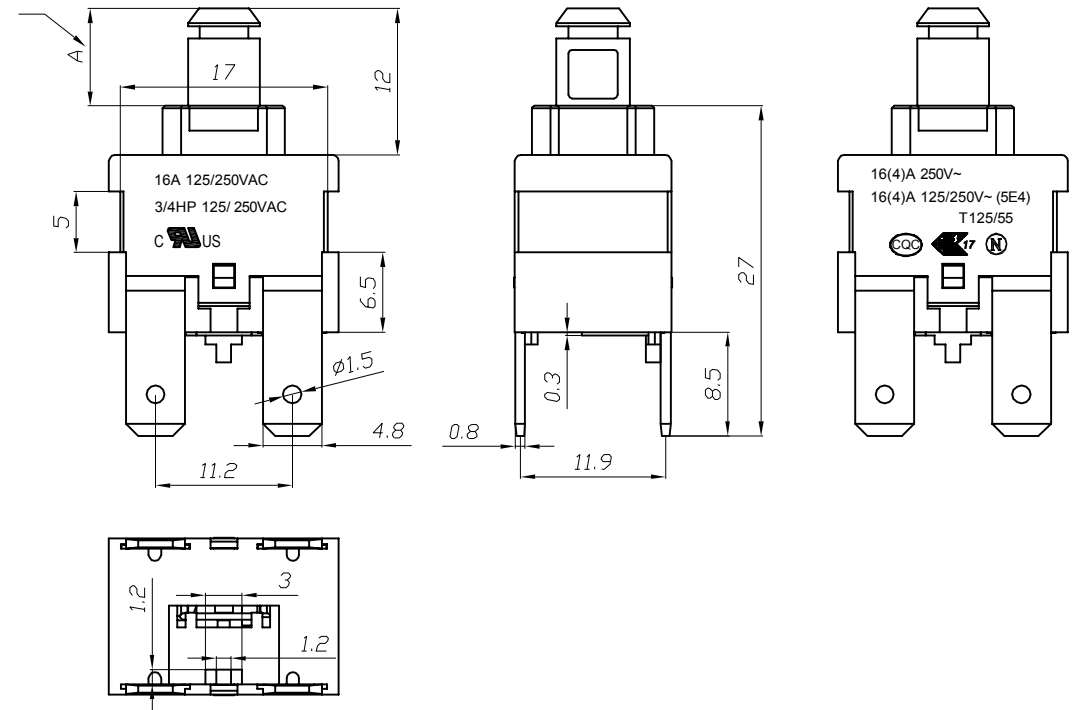


- 1.PUSH SWITCH MODEL NO. MPS21-WWBAA-R
- 2.QUICK CONNECTOR TYPE;DOUBLE POLE SINGLE THROW
- 3.RATING:16A 125/250VAC 3/4HP 125/250VAC(CUL)
  - 16(4)A 125/250V~ T125/55(ENEC17;NEMKO;CB)
  - 16(4)A 250~ T125/55(CQC)

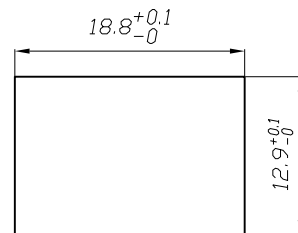
- 4.ACTUATOR COLOR:WHITE  
HOUSING COLOR:WHITE  
BASE COLOR:BLACK
- 5.ALL MATERIALS ARE ROHS COMPLIANT
- 6.OPERATION FORCE:800 ±300gf



WHEN THE SWITCH IS ON THE "ON" STATE,  
DIMENSION A IS 5.0 mm, AND THE "OFF"  
STATE, DIMENSION A IS 8.0 mm



PANEL CUTOUT DIMENSION:



修正 REVISION	說明 DESCRIPTION	修訂者 REVISED BY	SPECIFICATION				公差 TOLERANCES		TOLERANCES UNLESS OTHERWISE SPEC.±0.3/0.05,ANG.±2			
			製圖 DRAWN BY	設計 DESIGNED BY	校對 CHECKED BY	核准 APPROVED BY	單位 UNIT	mm	機種名稱 MODEL NAME	PUSH SW	機種編號 MODEL NO.	MPS21-WWBAA-R
△							比例 SCALE	2/1	六鈞電子五金有限公司 LEGION ELECTRONIC & HARDWARE CO., LTD.			
△							日期 DATE	2016.2.25				