

P.C.B LAYOUT
TOLERANCE:±0.05

Ordering Information:

A2007WV-XP - *** - ***
1 2 3

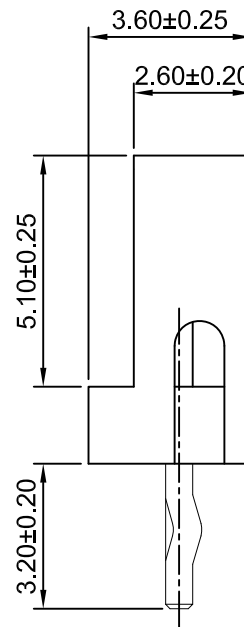
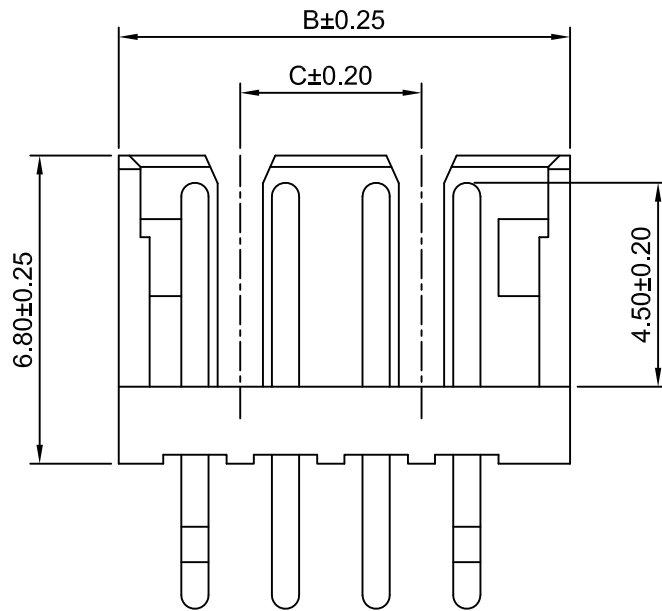
- 1.Part NO.
- 2.Color:
(blank): White
BK: Black
BL: Blue
- 3.Finish:
(blank): Tin over Nickel
G: Gold over Nickel

SPECIFICATIONS:

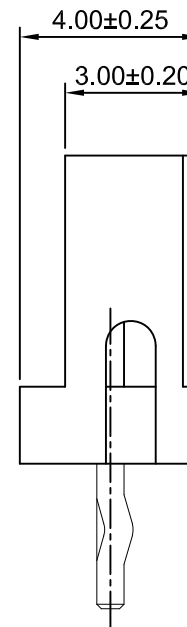
Current Rating: 1A AC,DC
Voltage Rating: 125V AC,DC
Temperature Range: -40°C ~ +105°C
Contact Resistance: 20mΩ Max.
Insulation Resistance: 100MΩ Min.
Withstanding Voltage: 500V AC/minute
Pin Material: Brass/Tin over Nickel
Material: Nylon 66,UL94V-0(White)

Ordering Information & Dimensions

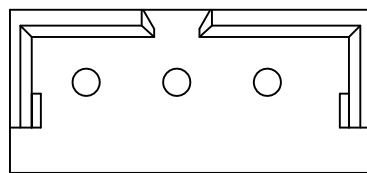
Part NO.	Dimensions(mm)		
	A	B	C
A2007WV-2P	2.00	5.96	—
A2007WV-3P	4.00	7.96	—
A2007WV-4P	6.00	9.96	4.00
A2007WV-5P	8.00	11.96	6.00
A2007WV-6P	10.00	13.96	8.00
A2007WV-7P	12.00	15.96	10.00
A2007WV-8P	14.00	17.96	12.00
A2007WV-9P	16.00	19.96	14.00
A2007WV-10P	18.00	21.96	16.00
A2007WV-11P	20.00	23.96	18.00
A2007WV-12P	22.00	25.96	20.00
A2007WV-13P	24.00	27.96	22.00
A2007WV-14P	26.00	29.96	24.00
A2007WV-15P	28.00	31.96	26.00



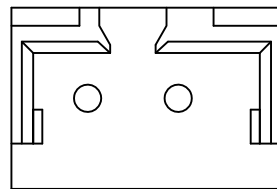
3P~15P



2P



3P



2P

REV	DESCRIPTION	DATE
A1	CHANGE THE DRAWING	2020.09.03
A0	NEW RELEASE	2005.05.10

CJTconn CHANGJIANG CONNECTORS CO.,LTD.

Unit	Scale	Sheet	TITLE
mm	6:1	1 of 1	2.00mm PITCH 180° WAFER
DRWN	CHK'D	APPR	
Dengchun Yi	Diankui Wan	Jack Yin	DRAWING NO. A2007WV-XP
General Tolerances			
x.xx±0.25 x.xxx±0.20 x.xxxx±0.15 ANGLES ±1°			THIRD ANGLE PROJECTION