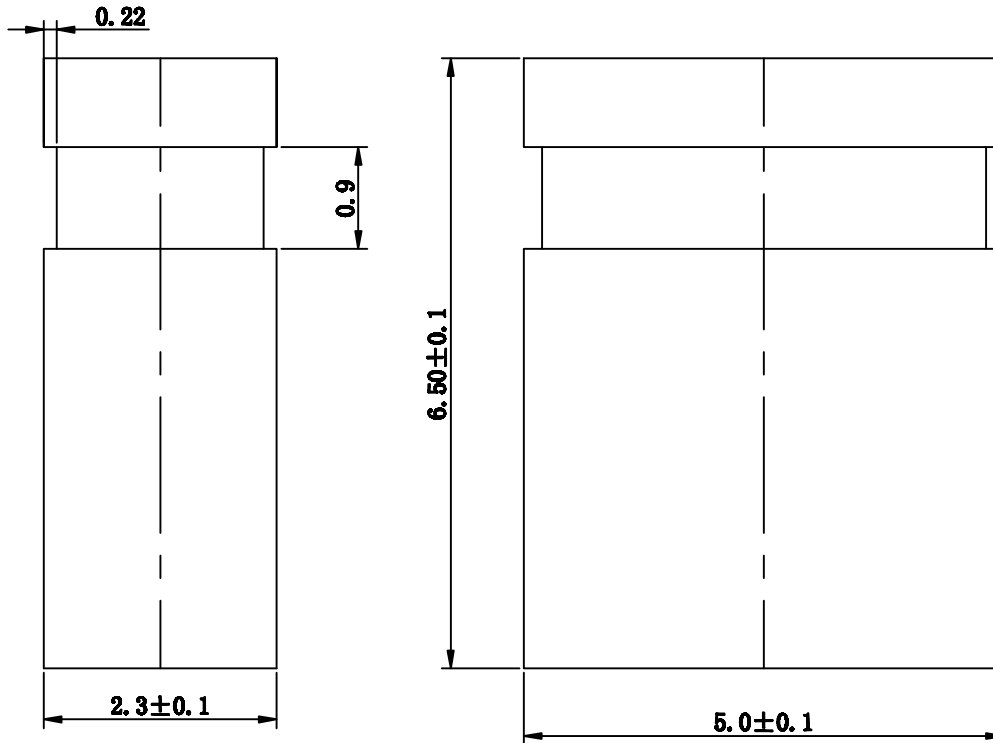
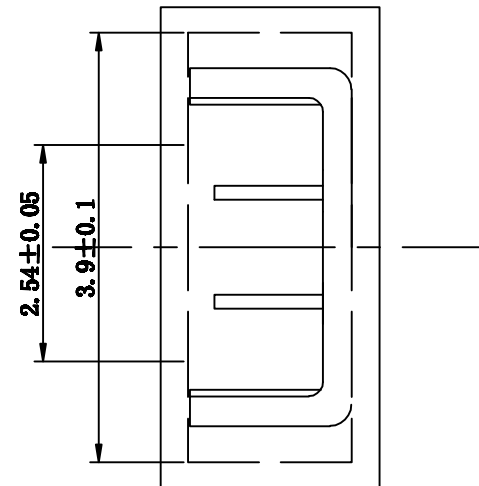


**Kinghelm®**



**SPECIFICATIONS**

Contact Resistance: 3 aperes Max  
 Current Rationg: 3m Max  
 Insulator Resistance: 1000 Megohms Max  
 Dielectric Withstanding Voltage:  
 AC 650 Volts RMS at sealeve



深圳市金航标电子有限公司	<a href="http://www.kinghelm.com.cn">www.kinghelm.com.cn</a>	<b>PH2.54 2P 闭口短路块</b>					P/NO:	
KH-2.54TXM-BK-H6.5-G	0755-28190160	Customer:	Approal:	Unit	Scale		Date	Pin Longer:
		Drawing No:张建军	Check:	mm	06.2.20		Signatuer:	