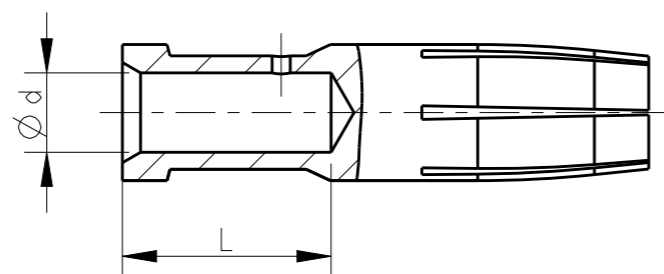
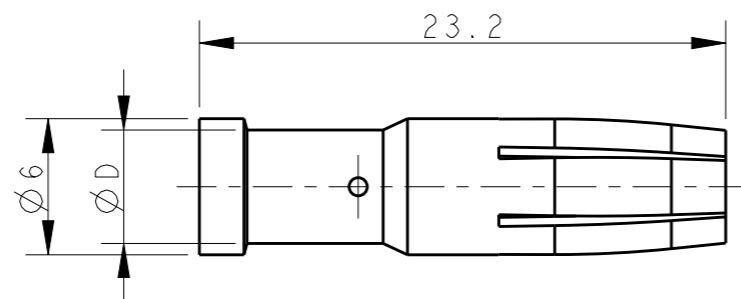
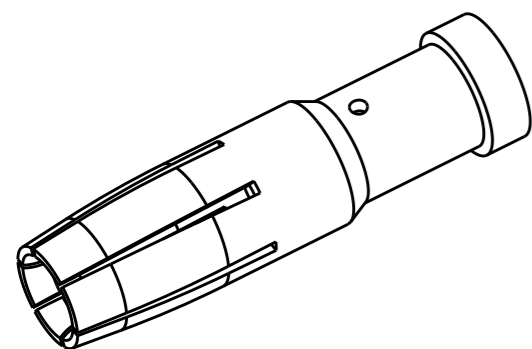
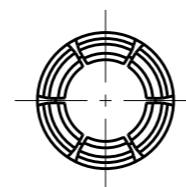


REVISIONS

P	LTR	DESCRIPTION	DATE	DWN	APVD
	A	INITIAL	20OCT2016	RL	CW



SECTION A-A



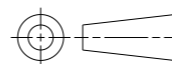
NOTES:
 1. TECHNICAL CHARACTERISTICS:
 CONTACT MATERIAL: BRASS
 SURFACE PLATING:
 SILVER PLATING: $\geq 2\mu\text{m}$
 GOLD PLATING: $\geq 0.75\mu\text{m}$
 CONTACT RESISTANCE: $\leq 3\text{m}\Omega$
 WIRE RANGE: 1.0-10.0 mm² (18-8 AWG)

注释:
 1. 技术参数:
 公针材料: 黄铜
 表面电镀:
 镀银: $\geq 2\mu\text{m}$
 镀金: $\geq 0.75\mu\text{m}$
 接触电阻: $\leq 3\text{m}\Omega$
 接线范围: 1.0-10.0 mm² (18-8 AWG)

SILVER PLATING 镀银			GOLD PLATING 镀金			Ød	ØD	WIRE GAUGE 线规		STRIPPING LENGTH L (mm) 剥线长度 L (mm)
PART NUMBER 料号	PART DESCRIPTION 描述		PART NUMBER 料号	PART DESCRIPTION 描述				MM ²	AWG	
T2040002010-008	CMF-1.0	CMF-1.0, SILVER PLATING, ENVISION MM母针 1.0mm ² , 镀银, 远景	T2040012010-008	DMF-1.0	DMF-1.0, GOLD PLATING, ENVISION MM母针 1.0mm ² , 镀金, 远景	1.45	2.65	1.0	18	9.2
T2040002015-008	CMF-1.5	CMF-1.5, SILVER PLATING, ENVISION MM母针 1.5mm ² , 镀银, 远景	T2040012015-008	DMF-1.5	DMF-1.5, GOLD PLATING, ENVISION MM母针 1.5mm ² , 镀金, 远景	1.75	3.00	1.5	16	
T2040002025-008	CMF-2.5	CMF-2.5, SILVER PLATING, ENVISION MM母针 2.5mm ² , 镀银, 远景	T2040012025-008	DMF-2.5	DMF-2.5, GOLD PLATING, ENVISION MM母针 2.5mm ² , 镀金, 远景	2.25	3.45	2.5	14	
T2040002040-008	CMF-4.0	CMF-4.0, SILVER PLATING, ENVISION MM母针 4.0mm ² , 镀银, 远景	T2040012040-008	DMF-4.0	DMF-4.0, GOLD PLATING, ENVISION MM母针 4.0mm ² , 镀金, 远景	2.85	3.85	4.0	12	
T2040002060-008	CMF-6.0	CMF-6.0, SILVER PLATING, ENVISION MM母针 6.0mm ² , 镀银, 远景	T2040012060-008	DMF-6.0	DMF-6.0, GOLD PLATING, ENVISION MM母针 6.0mm ² , 镀金, 远景	3.50	5.00	6.0	10	
T2040002100-008	CMF-10	CMF-10, SILVER PLATING, ENVISION MM母针 10mm ² , 镀银, 远景	T2040012100-008	DMF-10	DMF-10, GOLD PLATING, ENVISION MM母针 10mm ² , 镀金, 远景	4.30	5.60	10.0	8	

THIS DRAWING IS A CONTROLLED DOCUMENT.

DIMENSIONS:
mm



TOLERANCES UNLESS OTHERWISE SPECIFIED:

0 PLC	±-
1 PLC	±-
2 PLC	±-
3 PLC	±-
4 PLC	±-
ANGLES	±-

MATERIAL

-

FINISH

-

DWN 20OCT2016

ROY LIU

CHK 20OCT2016

KYLE ZENG

APVD 20OCT2016

CHRIS WANG

PRODUCT SPEC

108-137053

APPLICATION SPEC

114-137053

WEIGHT

-

CUSTOMER DRAWING



TE Connectivity

NAME

CMF/DMF
MM SOCKET CONTACT

SIZE

A3

CAGE CODE

-

DRAWING NO

©-T20400X20XX008

RESTRICTED TO

ENVISION

SCALE 3:1

SHEET 1 OF 1

REV A

Mouser Electronics

Authorized Distributor

Click to View Pricing, Inventory, Delivery & Lifecycle Information:

[TE Connectivity:](#)

[T2040002040-000](#)