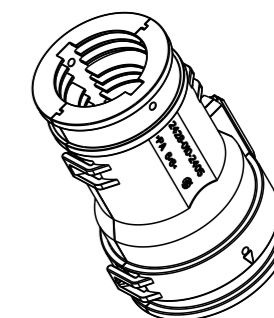
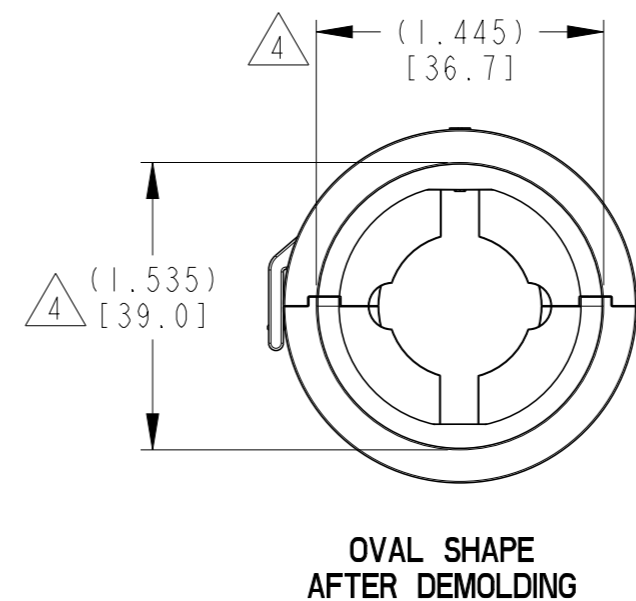
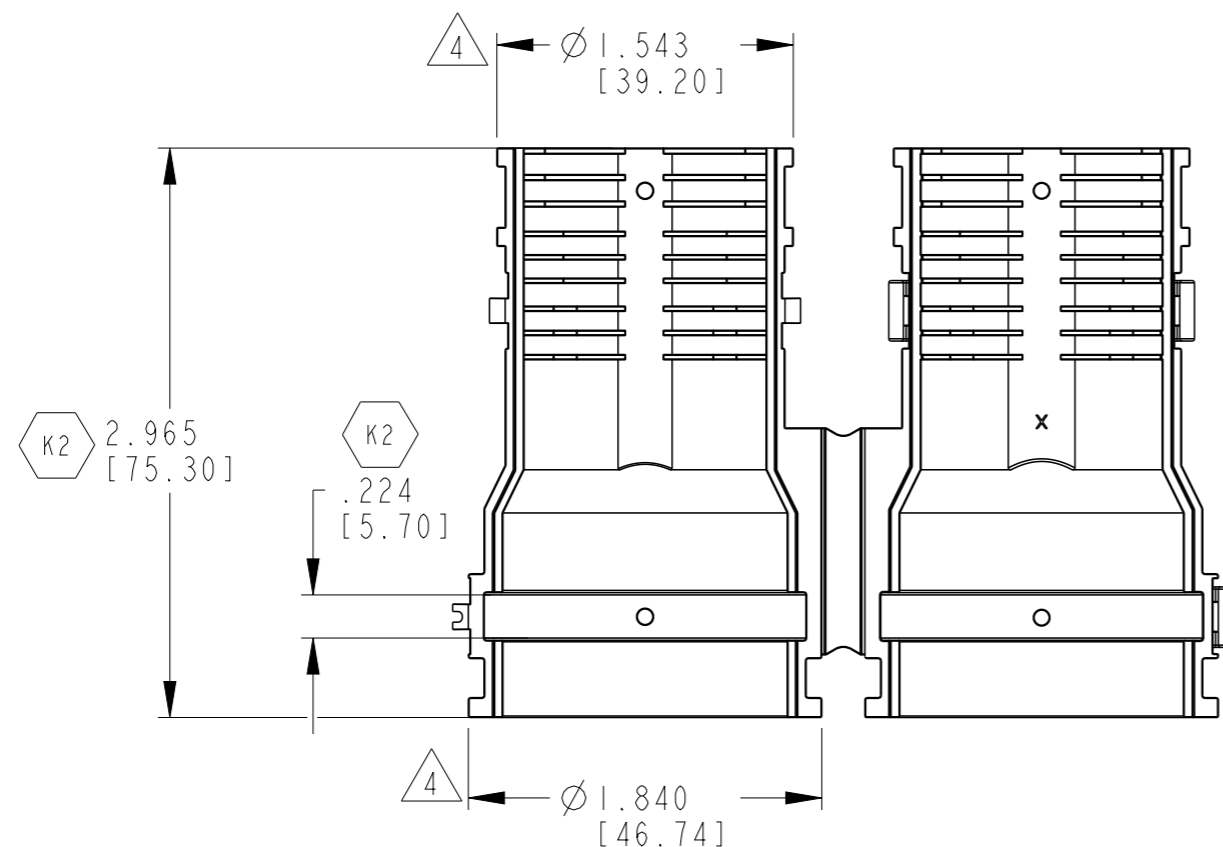
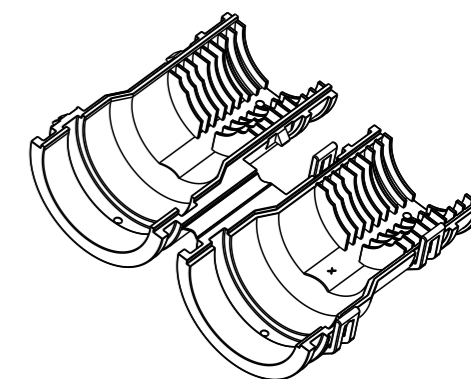


REVISIONS

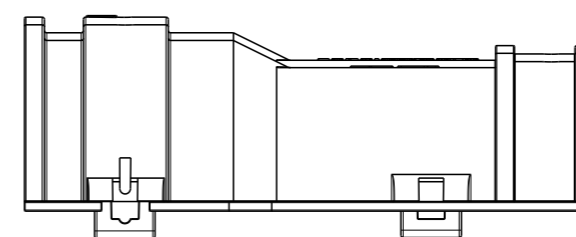
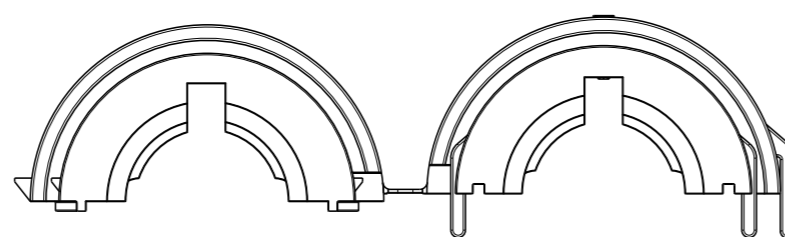
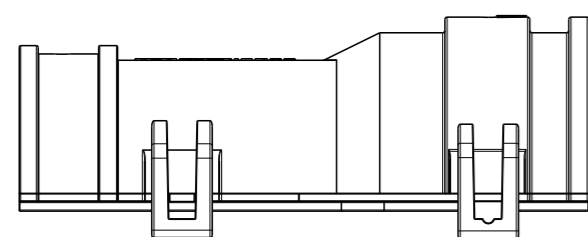
P	LTR	DESCRIPTION	DATE	DWN	APVD
B		REVISED PER PCN E-19-009430	14JUN2019	MK	CF
K		REVISED TO MATCH THE PART REVISION	06NOV2019	MK	CF
K1		REVISION RECORD UPDATED	12NOV2019	MK	CF
K2		REVISED PER PCN-22-153957	18AUG2022	SN	AW



3-D VIEW
CLOSED



3-D VIEW
OPEN



4. CIRCULAR DIMENSIONS CAN NOT BE MEASURED WITHOUT USING A GAGE OR AN ADEQUATE CONNECTOR DUE TO WARPAGE AFTER DEMOLDING.

3. MATERIAL: NYLON 66, COLOR: BLACK

2. SUITABLE WITH CORRUGATED TUBES SIZE NW 17, 19 AND 26.

1. THIS PART MATES WITH HDP24/26-24-XP/SX-L017.

NOTES:

TE INTERNAL PN	DEUTSCH PN
2428-010-2405	ZPF000000000146919

THIS DRAWING IS A CONTROLLED DOCUMENT.		DWN R. MESSENGER 20OCT2004	TE Connectivity															
DIMENSIONS: INCH[mm]		CHK A. JAIME 30SEP2008																
TOLERANCES UNLESS OTHERWISE SPECIFIED:		APVD R. REED 01OCT2008	NAME BACKSHELL STRAIGHT SIZE 24 HDP L017 MODS ONLY TUBE SIZE NW 17, 19 AND 26															
<table border="1"> <tr><td>0 PLC</td><td>±-</td></tr> <tr><td>1 PLC</td><td>±-</td></tr> <tr><td>2 PLC</td><td>±-</td></tr> <tr><td>3 PLC</td><td>±.025[0.63]</td></tr> <tr><td>4 PLC</td><td>±-</td></tr> <tr><td>ANGLES</td><td>±° 30' 0"</td></tr> </table>		0 PLC	±-	1 PLC	±-	2 PLC	±-	3 PLC	±.025[0.63]	4 PLC	±-	ANGLES	±° 30' 0"	PRODUCT SPEC 108-151015	SIZE A3	CAGE CODE 4AFU8	DRAWING NO C=2428-010-2405	RESTRICTED TO -
0 PLC	±-																	
1 PLC	±-																	
2 PLC	±-																	
3 PLC	±.025[0.63]																	
4 PLC	±-																	
ANGLES	±° 30' 0"																	
MATERIAL VYDYNE 47H PA 6/6		FINISH -	APPLICATION SPEC 114-151015	WEIGHT 30 g	SCALE 1:1	SHEET 1 OF 1	REV K2											
		CUSTOMER DRAWING																