



Material材料

Insulator 塑胶: 30% Glass filled PBT, (UL 94V-0)

Contact 端子: Brass 黄铜

Electrical Characteristics 电气特性

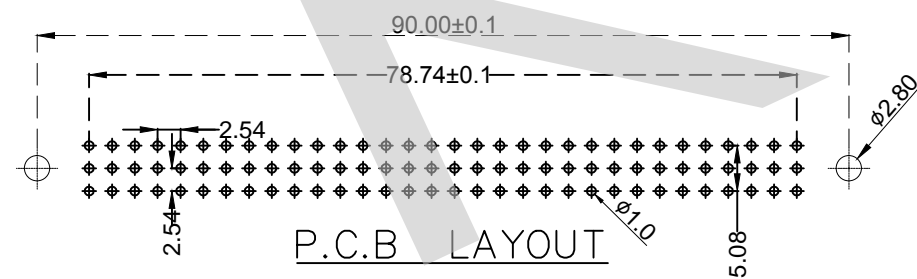
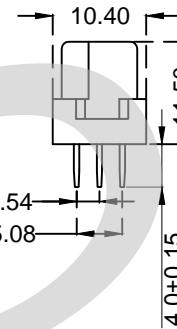
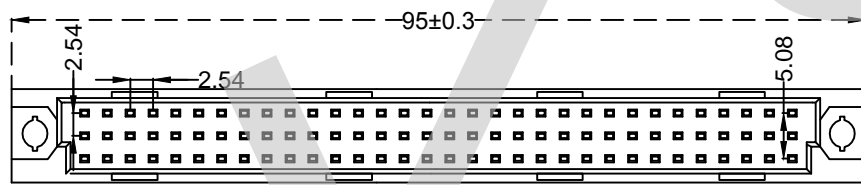
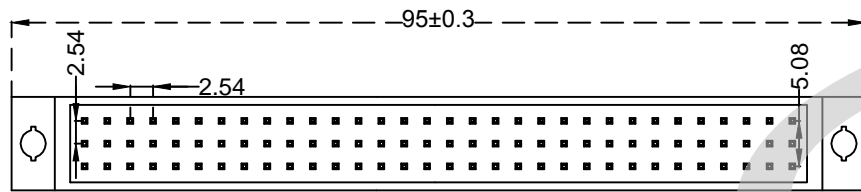
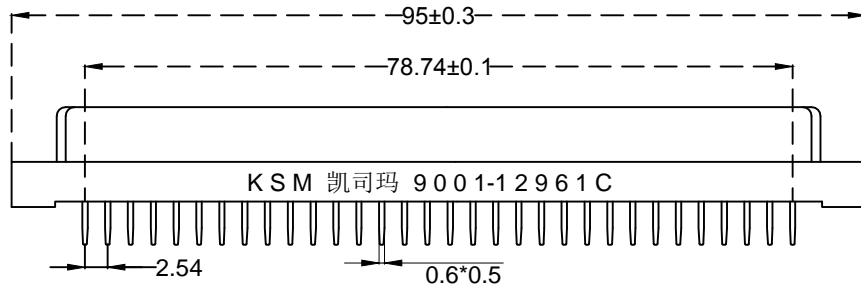
Current rating 额定电流: 1.5 AMP

Dielectric Withstanding Voltage 耐压:
AC 1000V for 1 Minute.

Insulator Resistance 绝缘电阻:
1000MΩ Min. AT DC 500V.

Contact Resistance 接触电阻: 30MΩ Max. AT DC 100mA.

Operating Temperature 工作温度: -40°C ~ +105°C



未注公差尺寸			KSM-9001-12961C		上海洲日电子有限公司				
尺寸	公差		396		Shanghai Zhouri Electronics CO.,LTD				
	长度	角度			上海康司玛电子设备进出口有限公司				
X	±0.3	±5°			Shanghai KangSiMa Eletronic Equipment import and export Co.,LTD				
X.X	±0.2	±3°			TEL:86-21-34975176/51571121				
X.XX	±0.15		版本号	20171018 A/0					
绘图	周元金	201171018	图编号	ZR20171018-48					
审核	张海娜	201171018	物料编号	110664	1:1		mm	图幅	A4
核准	章妹	20181113			: 1 1				