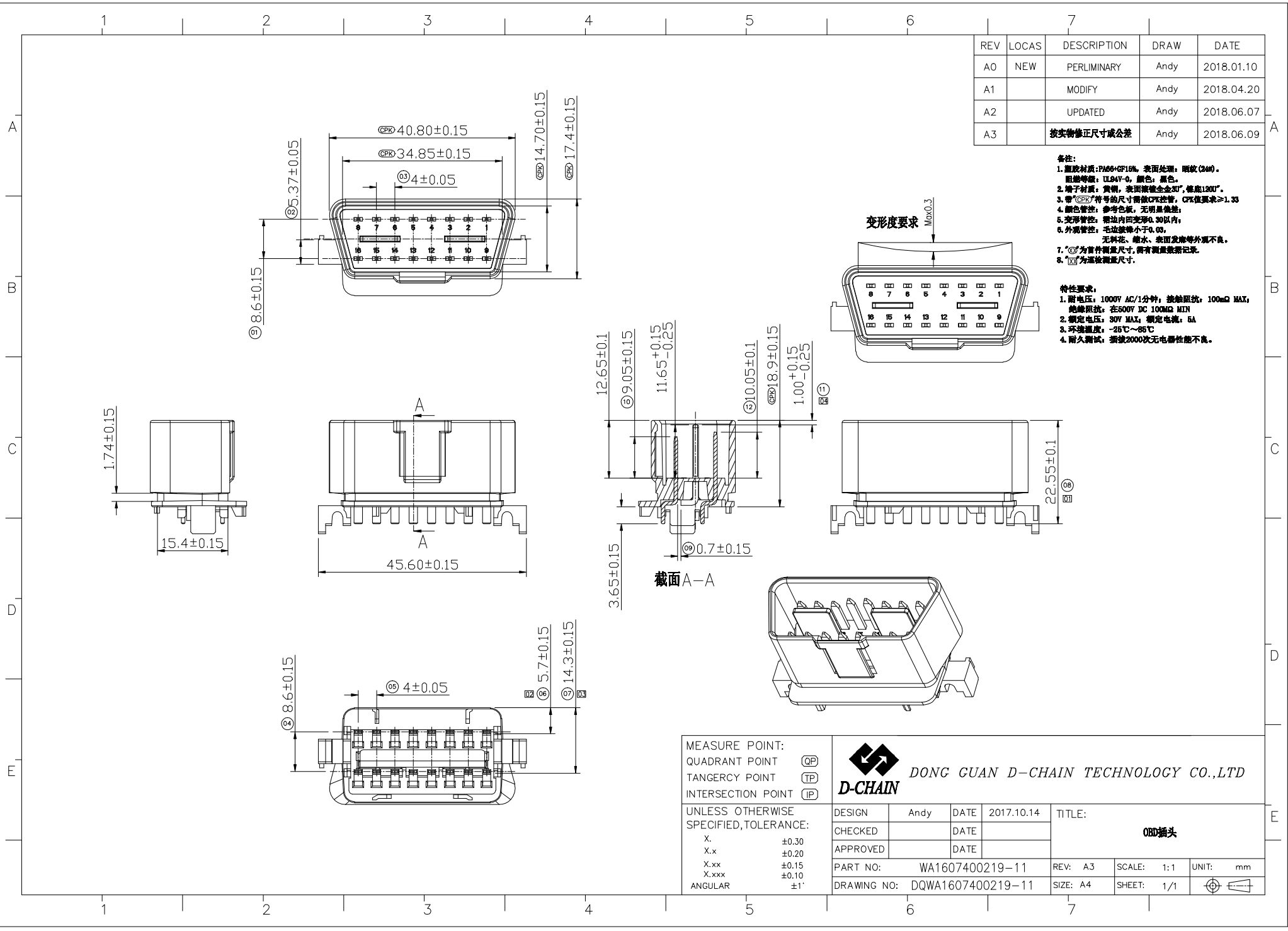
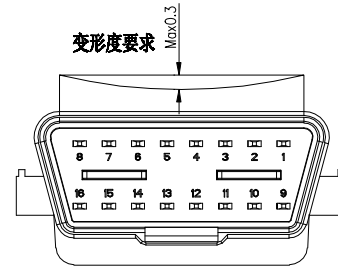


REV	LOCAS	DESCRIPTION	DRAW	DATE
A0	NEW	PERLIMINARY	Andy	2018.01.10
A1		MODIFY	Andy	2018.04.20
A2		UPDATED	Andy	2018.06.07
A3		按实物修正尺寸或公差	Andy	2018.06.09

- 备注:
1. 塑胶材质: PA66+GF16%, 表面处理: 哑纹(24#).
  2. 端子材质: UL84V-0, 颜色: 黑色.
  3. 端子镀层: 黄铜, 表面镀金全孔, 镀层120U".
  4. 带CIP符号的尺寸需做CIP控制, CIP值要求 $\geq 1.33$ .
  5. 颜色管控: 参考色板, 无明显色差.
  6. 变形管控: 单边内凹变形0.30以内.
  7. 外观管控: 毛边小于0.05, 无料花、缩水、表面发麻等外观不良.
  8. \*为盲件测量尺寸, 需有测量数据记录.
  9. □为溢检测量尺寸.

- 特性要求:
1. 耐电压: 1000V AC/1分钟; 接触阻抗: 100m $\Omega$  MAX;
  2. 绝缘阻抗: 在500V DC 100M $\Omega$  MIN
  3. 额定电压: 80V MAX; 额定电流: 5A
  4. 环境温度: -25 $^{\circ}$ C~85 $^{\circ}$ C
  5. 耐久测试: 插拔2000次无电器性能不良.



MEASURE POINT: QUADRANT POINT (QP) TANGENCY POINT (TP) INTERSECTION POINT (IP)	DONG GUAN D-CHAIN TECHNOLOGY CO.,LTD	
	UNLESS OTHERWISE SPECIFIED, TOLERANCE: X. $\pm 0.30$ X.x $\pm 0.20$ X.xx $\pm 0.15$ X.xxx $\pm 0.10$ ANGULAR $\pm 1'$	DESIGN: Andy CHECKED: APPROVED: PART NO: WA1607400219-11 DRAWING NO: DQWA1607400219-11
DESIGN: Andy CHECKED: APPROVED: PART NO: WA1607400219-11 DRAWING NO: DQWA1607400219-11	DATE: 2017.10.14 DATE: DATE: REV: A3 SIZE: A4	TITLE: OBD插头 UNIT: mm SCALE: 1:1 SHEET: 1/1