

REV	LOCAS	DESCRIPTION	DRAW	DATE
AO	NEW	PERLIMINARY	Andy	2017.06.14
A1		UPDATED	Andy	2017.09.30
A2	△	UPDATED	LIU	2019.12.10

NOTES:

1. MATERIAL:

1.1 Housing: High Temperature Thermoplastic
UL94V-0; Color Black.

1.2 Terminal: Copper Alloy

2. FINISH:

2.1 Terminal: Plated Gold on the Contact Area
and Solder Tails.

3. SPECIALITY:

3.1 Rated current: 1.0A

3.2 Rated voltage: 50V

3.3 Contact Resistance: 50mΩMAX

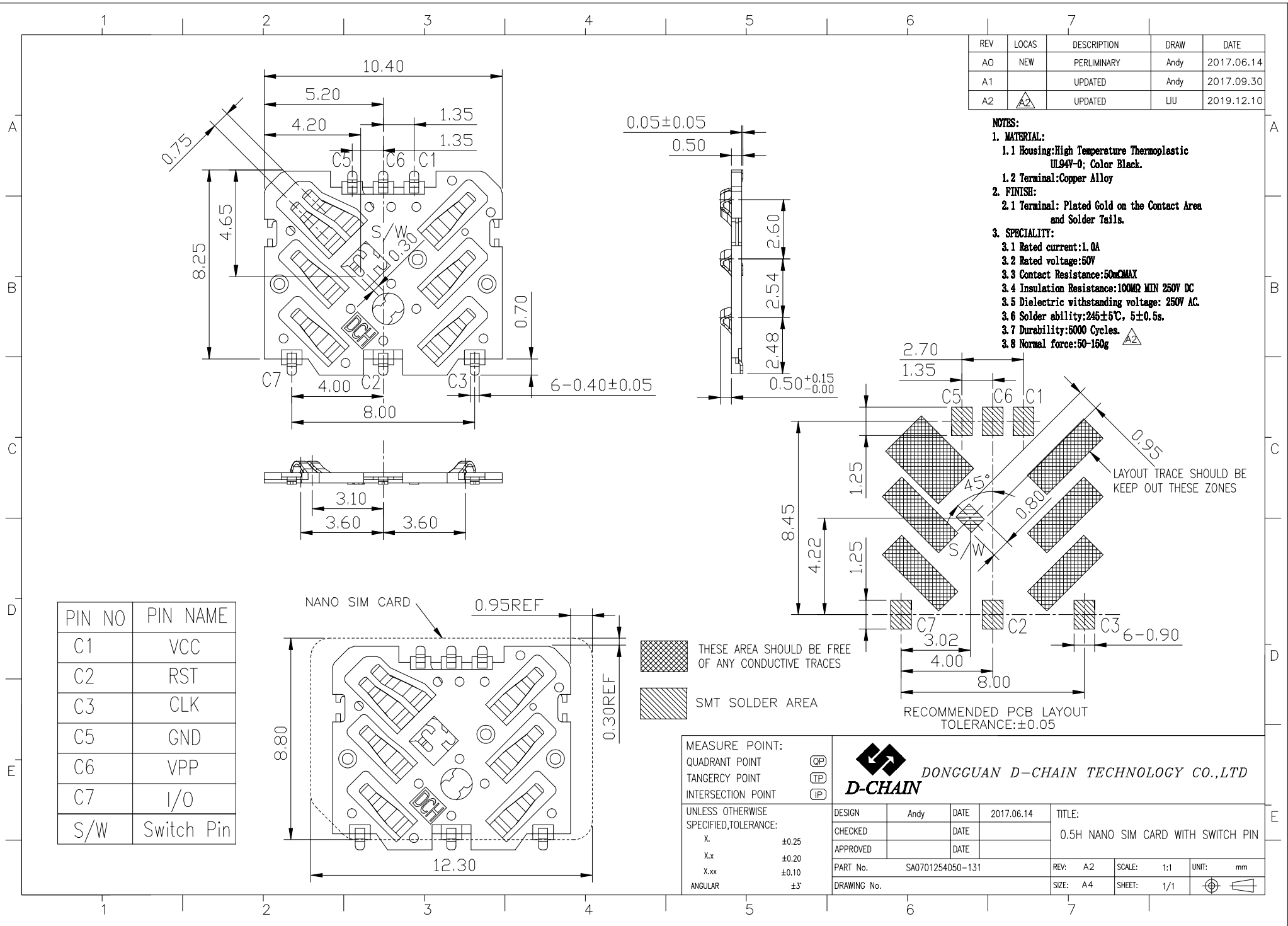
3.4 Insulation Resistance: 100MΩ MIN 250V DC

3.5 Dielectric withstanding voltage: 250V AC.

3.6 Solder ability: 245±5°C, 5±0.5s.


3.7 Durability: 5000 Cycles. △

3.8 Normal force: 50-150g △



PIN NO	PIN NAME
C1	VCC
C2	RST
C3	CLK
C5	GND
C6	VPP
C7	I/O
S/W	Switch Pin

MEASURE POINT:	QUADRANT POINT (QP)
TANGENCY POINT	(TP)
INTERSECTION POINT	(IP)
UNLESS OTHERWISE SPECIFIED, TOLERANCE:	
X	±0.25
X.x	±0.20
X.xx	±0.10
ANGULAR	±3'

 D-CHAIN		DONGGUAN D-CHAIN TECHNOLOGY CO.,LTD	
		DESIGN	Andy
CHECKED		DATE	
APPROVED		DATE	
PART No.	SA0701254050-131		TITLE:
DRAWING No.			0.5H NANO SIM CARD WITH SWITCH PIN
REV:	A2	SCALE:	1:1
SIZE:	A4	SHEET:	1/1
UNIT:	mm		