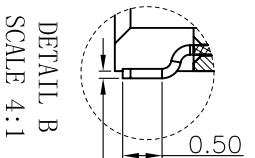
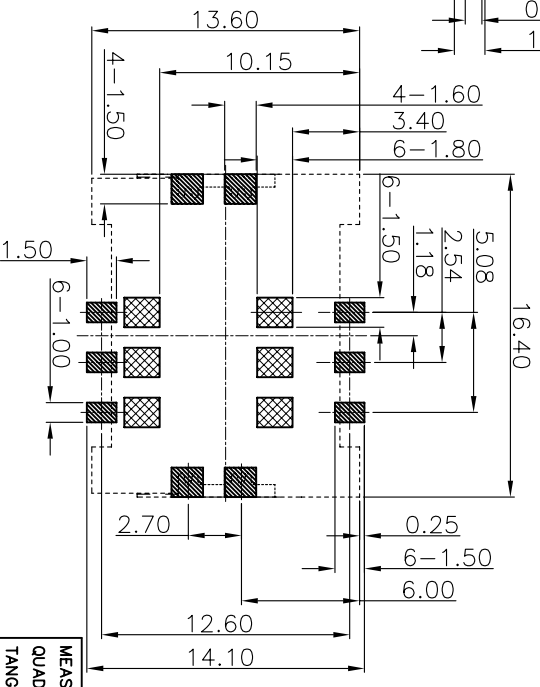
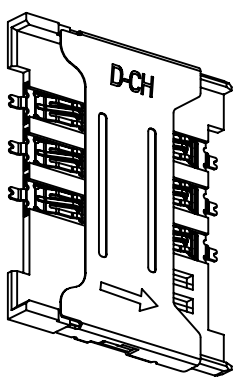
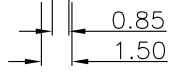
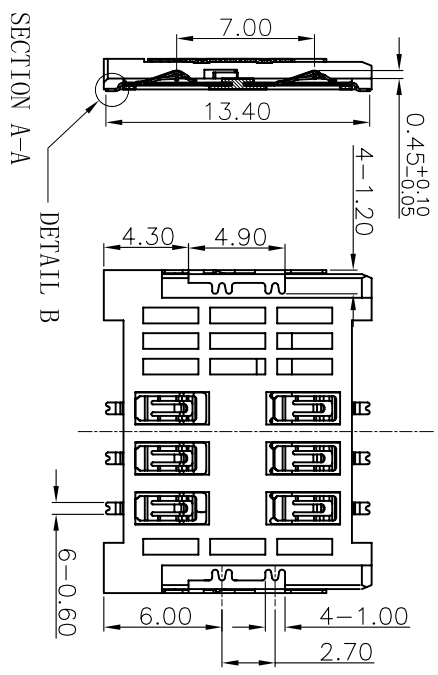
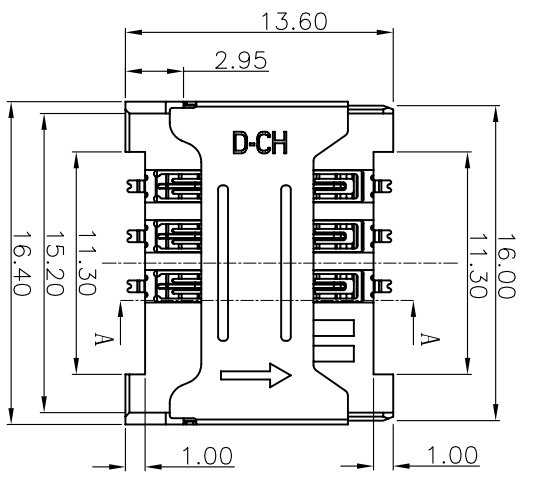


REV	LOCALS	DESCRIPTION	DRAWN	DATE
01	NEW	INITIAL RELEASE	Wong	2014.04.16
02		UPDATED	LTAO	2016.01.12
03		UPDATED	LTAO	2016.05.12
04		ECN20170006	Andy	2017.04.08

**NOTES:**

- MATERIAL:**
  - Housing: High Temperature Thermoplastic UL94V-0; Color Black.
  - Terminal: Copper Alloy.
  - Shell: Stainless Steel
- FINISH:**
  - Terminal: Gold on the Contact Area and Solder Tails, Underplated Nickel Over all.
  - Shell: Plated Gold on the Solder Tails, Underplated Nickel Over all.
- SPECIALITY:**
  - Rated current: 1.0A
  - Rated voltage: 30V
  - Contact Resistance: 50mΩ MAX
  - Insulation Resistance: 100MΩ MIN 100V DC
  - Dielectric withstanding voltage: 100V AC.
  - Solder ability: 245±5°C, 5±0.5s.
  - Durability: 5000 Cycles Min.



ALL SOLDER TAILS

**Ordering Information**

S A 06 01 254 150 - 70  
 Running number:  
 150: Height 1.50mm  
 254: Pitch 2.54mm

**RECOMMEND P.C.B. LAYOUT**

- TOLERANCE ±0.05
- THESE AREA SHOULD BE FREE OF ANY CONDUCTIVE TRACES
- SMT SOLDER AREA



**SHEN ZHEN D-CHAIN TECHNOLOGY CO., LTD**

MEASURE POINT: QUADRANT POINT TANGENCY POINT INTERSECTION POINT

UNLESS OTHERWISE SPECIFIED, TOLERANCE:

X	±0.25
Xxx	±0.20
Xxxx	±0.15
ANGULAR	±3°

DESIGN	Wong	DATE	2014.04.16	TITLE	1.5H 6PIN SIM CARD
CHECKED		DATE			
APPROVED		DATE			
PART NO:	S0601254150-70	REV:	04	SCALE:	1:1
DRAWING NO:	D050601254150-70	SIZE:	A4	SHEET:	1/1