


## 1. 适用范围 / SCOPE

1032SF 系列快速保险丝，适用于一般电子设备。

1032SF series Fast Acting Fuse, used in electronic equipment.

## 2. 产品编码 / Part Numbering

例「example」：

|        |     |      |   |
|--------|-----|------|---|
| 1032SF | 20A | 250V |  |
| 1      | 2   | 3    | 4   |

- ① 系列号 / Series Number
- ② 额定电流 / Rated Current
- ③ 额定电压 / Rated Voltage
- ④ 认证符号 / Approved Symbol

## 3. 额定电流和额定电压 / RATED CURRENT AND RATED VOLTAGE

额定电流 / Rated Current:

200mA~80A

额定电压 / Rated Voltage:

200mA~10A: 125V/250V/600V/1000V ac、72V / 100V dc

200mA~80A: 125V/250Vac 72V/100V dc

## 4. 标示 / MARKING

保险丝上需有下列标示 / The fuses shall have the following marking

① 产品系列标识 / Series type Logo : **LB**<sup>®</sup>

② 额定电流 / Rated Current (A): \_\_\_A 或 \_\_\_mA

注意 / Note:

对标示的大小和位置没有规定 / Size and position of the markings shall not be provided.

## 5. 外观及形状 / APPEARANCES AND CONFIGURATION

5-1 外观：无显著的污点、铁锈或裂纹；标示应容易辨识。

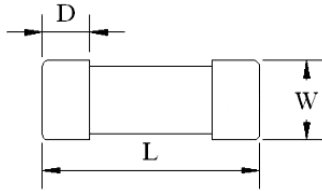
Appearances: There shall not be any remarkable stain, rust or crack on the appearances; marking shall be easily legible.

5-2 形状：表面贴装式保险丝

Configuration: Surface Mount Fuse.

## 6. 工程图和结构 / OUTLINE DRAWING AND STRUCTURE

### 6-1 工程图 (单位: mm) / Outline Drawing and Dimensions (Unit: mm)



| L (mm)     | W (mm)    | D (mm)    |
|------------|-----------|-----------|
| 12.50±0.50 | 4.50±0.20 | 2.70±0.20 |

### 6-2 结构 / Structure

| 编号<br>No | 元件<br>Component | 材质<br>Material                   | 数量<br>Quantity |
|----------|-----------------|----------------------------------|----------------|
| 1        | 本体<br>Body      | 陶瓷管<br>Ceramic tube              | 1              |
| 2        | 铜帽<br>Cap       | 黄铜镀银<br>Brass with silver plated | 2              |

## 7. 产品特性 / PRODUCT CHARACTERISTICS

| 编号<br>No. | 项目<br>Item                                       | 内容<br>Content  | 参考标准<br>Reference standard                 |
|-----------|--|--|--|
| 1         | 绝缘阻抗<br>Insulation resistance<br>(after opening) | 10,000 ohms minimum  | MIL-STD-202G, Method 302 Test Condition A  |
| 2         | 可焊性<br>Solderability                             | T=240°C±5°C, t=3+0/-0.5s,<br>Cover ≥95%  | MIL-STD-202G, Method 208H                  |
| 3         | 耐焊接热<br>Soldering heat resistance                | 10 sec at 260 °C<br> ΔR :<10%  | MIL-STD-202G, Method 210F Test Condition B |
| 4         | 热冲击<br>Thermal Shock                             | 5 cycles between -65°C/+125°C<br>15minutes ; each extreme  ΔR :<10%  | MIL-STD-202G, Method 107 Test Condition B  |
| 5         | 机械冲击<br>Mechanical Shock                         | 100Gs Peak amplitude, sawtooth<br>wave 6 ms duration, 3 cycles<br>XYZ+xyz=18 shocks.  ΔR :<10%                 | MIL-STD-202G, Method 213 Test Condition 1  |
| 6         | 高/低温储存<br>High/Low Temperature<br>Storage        | T=125°C±2°C, 96hours ,<br>T=-55°C±3°C, 96hours<br>  R : <10%   | IEC60068-2-1 / IEC60068-2-2                |
| 7         | 抗潮湿性<br>Moisture Resistance                      | 85°C±3°C,80%~90%RH 10 cycles<br> ΔR :<10%  | MIL-STD-202, Method 106                    |
| 8         | 振动<br>Vibration                                  | 10-55-10 Hz Sweep in 1 minute, 0.03<br>in.amplitude . 2hours in each of XYZ<br>planes=6hours total.  ΔR : <10% | MIL-STD-202 Method 201 ( 10-55Hz )         |
| 9         | 盐雾实验<br>Salt spray                               | 5% salt solution , 48hours<br> ΔR : <10%   | MIL-STD-202G,Method 101E, Test Condition B |

8. 电气特性 / ELECTRICAL CHARACTERISTICS

8-1 熔断 / 电流特性: Pre-Arcing Time / Current Characteristic (limits)

| RATED CURRENT | 1 IN/倍 | 2.5 IN/倍 |
|---------------|--------|----------|
|               | Min.   | Max.     |
| 200mA~80A     | 4hrs   | 120sec   |

8-2 产品规格/Specification

| Rated Current<br>额定电流 | Rated Voltage<br>额定电压                  | Breaking Capacity<br>分断能力                          |
|-----------------------|--|--|
| 200mA                 | AC 125V/250V/600V/1000V<br>DC 72V/100V | 600A@ 125V/250V/600V/1000V AC<br>600A@ 72V/100V dc |
| 250mA                 |  |  |
| 315mA                 |  |  |
| 400mA                 |  |  |
| 500mA                 |  |  |
| 630mA                 |  |  |
| 800mA                 |  |  |
| 1.0A                  |  |  |
| 1.25A                 |  |  |
| 1.6A                  |  |  |
| 2.0A                  |  |  |
| 2.5A                  |  |  |
| 3.15A                 |  |  |
| 4.0A                  |  |  |
| 5.0A                  |  |  |
| 6.3A                  |  |  |
| 8A                    |  |  |
| 10A                   |  |  |
| 12.5A~80A             | AC 125V/250V<br>DC 72V/100V            | 600A@ 125V/250V AC<br>600A@ 72V/100V DC            |

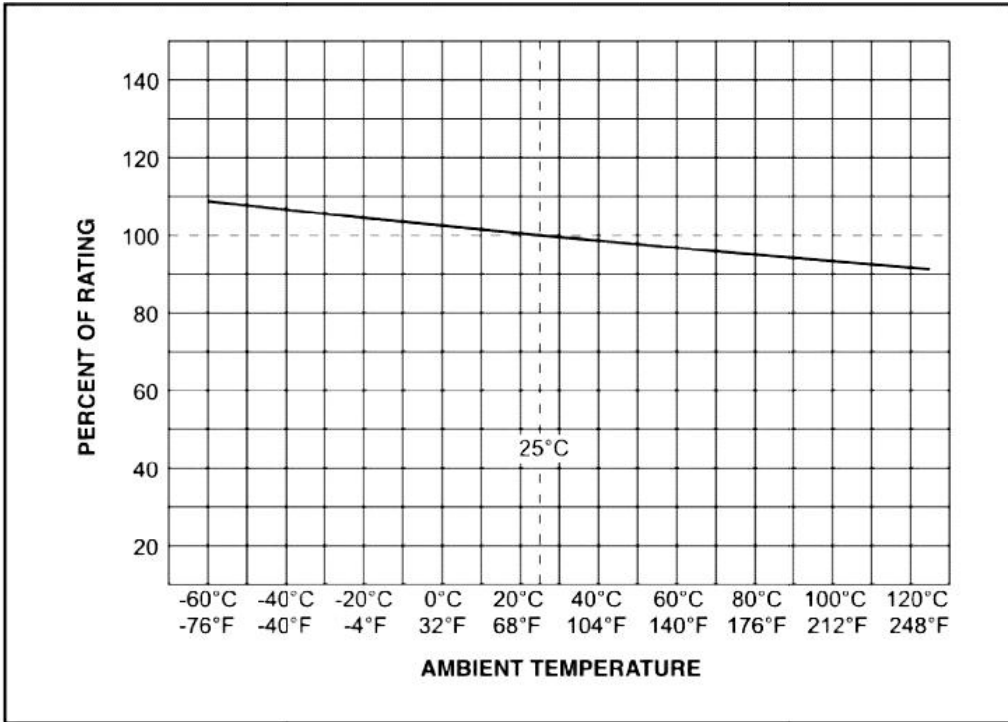
9.环境特性 / ENVIRONMENTAL CHARACTERISTIC

9-1 操作温度范围: -55℃~125℃ / Operating Temperature:-55℃~125℃

若贵司操作环境温度超出25±5℃范围，在选用保险丝规格时，需考虑操作环境温度对保险丝的影响。  
请参照：温度-电流曲线图。

When choosing the fuse's specification, if the operating environmental temperature beyond the scope from 20~30℃,  
you should consider the environmental temperature's affection to fuses.  
please refer:

Temperature-Current curve:



9-2 存储条件 / Storage Conditions

在温度+5℃~30℃、相对湿度 25%~60%的密闭条件下可存放 2 年。

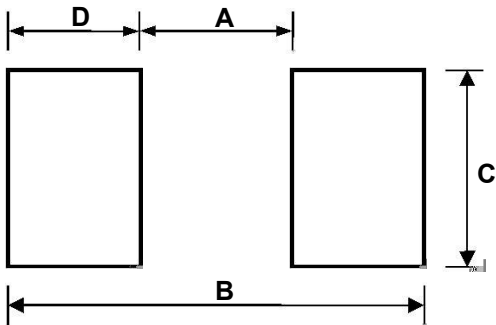
Under airtight in temperature+5℃~30℃、relative humidity 25%~60% can store 2 years.

在温度+10℃~60℃、相对湿度为 95%的非露天下最多可存放 30 天。

Without dew in temperature+10℃~60℃、relative humidity be 95% maximum value for 30days.

10. 安装方式及条件 / INSTALLATION WAY AND PARAMETERS

10-1 建议如下图安装方式安装，并满足所要求的尺寸。  
Propose that the following picture installation way is installed,  
and satisfied the required size.



| Dimensions | A (mm)    | B (mm)    | C (mm)    | D (mm)    |
|------------|-----------|-----------|-----------|-----------|
| 1032SF     | 5.72±0.30 | 13.3±0.30 | 5.65±0.30 | 3.80±0.30 |

10-2 建议客户焊接参数 / Recommended Customer Soldering Parameters

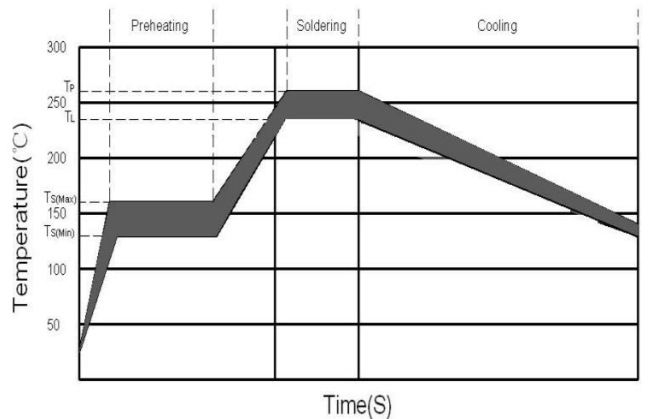
1. Infrared Reflow:

Temperature: 260°C

Time: 5sec Max.

Recommend Reflow profile

| Reflow Condition |                             | Pb-Free assembly |
|------------------|-----------------------------|------------------|
| Preheating       | -Temperature Min (Ts(min))  | 150 °C           |
|                  | -Temperature Max (Ts(max))  | 200 °C           |
|                  | -Time                       | 60~120 Secs      |
| Soldering        | -Temperature (TL)(Liquidus) | 235 °C           |
|                  | -Time Max (TL)              | 20~40Secs        |
|                  | -Peak Temperature (Tp)      | Max 260 °C       |
|                  | -Time Max (Tp)              | 5 Secs           |



2. Wave soldering

Reservoir Temperature: 260°C

Time in Reservoir: 10sec Max.

3. Hand Soldering :

Temperature: 350°C

Time: 3sec Max.

Soldering iron avoid touch Cap.

11. 其他使用注意事项 / OTHER NOTICE IN USED

符合本公司可能的其它档的要求。

It could be in conformance with another file which made by our company.

12.安全认证及编号 / STANDARDS AND APPROVALS

UL&C-UL

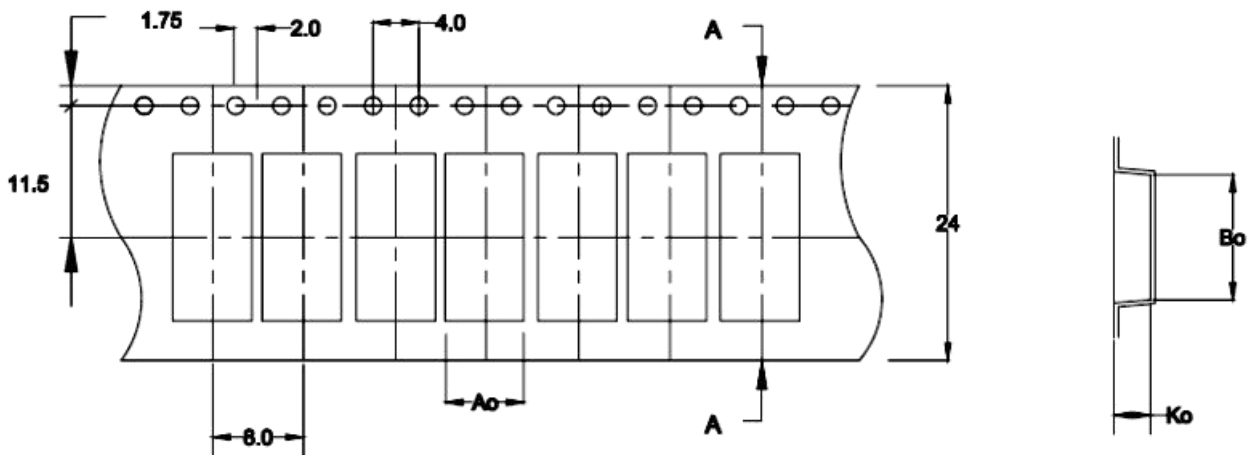
E498859

13.包装讯息 / PACKING INFORMATION

13-1包装数量、重量 / QUANTITY & WEIGHT

| 型号 Type Number | 数量(pcs) Quantity(pcs) |
|----------------|-----------------------|
| 1032SF         | 2,000                 |

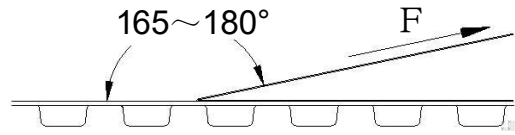
13-2 卷轮规格/ Reel & Tape specifications



| Rating  | A <sub>0</sub> (mm) | B <sub>0</sub> (mm) | K <sub>0</sub> (mm) |
|---------|---------------------|---------------------|---------------------|
| 40A-80A | 4.90                | 12.7                | 4.5                 |
| 1A-30A  | 3.50                | 10.4                | 3.5                 |

13-3 密封胶膜剥离强度要求 / Peeling Strength of Seal Tape

F = 剥离强度 : 0.1 – 1.0N ( 10 - 100gf )



14.其他 / OTHERS

14-1 如果在使用中有超出本规格书的要求，必须经由双方协商确认。

In the event that an impropriety is found beyond this specification ,it shall be fixed by mutual agreement between the parties.

14-2 如果本规格书有不适当的情况，必须通过双方协商并由本公司修改。

In the event that an impropriety is found in this specification , LANBAO ELECTRICAL APPLIANCES CO. LTD. shall amend it by mutual agreement between the parties.

| 版次  | 制作                | 确认                | 审核                |
|-----|-------------------|-------------------|-------------------|
| 第1版 | 赖秋莲<br>2020/12/02 | 谢海林<br>2020/12/02 | 熊士军<br>2020/12/02 |

# JFHR8.E498859 - SPECIAL-PURPOSE FUSES CERTIFIED FOR CANADA - COMPONENT

## Special-purpose Fuses Certified for Canada - Component

See General Information for Special-purpose Fuses Certified for Canada - Component

**ZHONG SHAN LANBAO ELECTRICAL APPLIANCES CO LTD**

E498859

West Xing Pu Rd

Huang Pu

Zhongshan, Guangdong 528429 CHINA

**Fuse for protection of semiconductor device**, Model(s) Cat. No. LB1038 (#), Cat. No. LB1038 (\$)

**Special-purpose Fuses**, Model(s) Rated 125/250/600/1000Vac, 72/100Vdc, 0.2-10 A, and 125/250Vac, 72/100Vdc, 0.2-80A, Model(s) 1032SF, 1032ST

# - followed by blank, followed by 0.2A - 35A, followed by blank, followed by 1000V, 750V or 500V, followed by blank, followed by DC/AC

\$ - followed by blank, followed by 35A - 50A, followed by blank, followed by 750V or 500V, followed by blank, followed by DC/AC

Marking: Company name, model designation and the Recognized Component Mark for Canada,



Last Updated on 2019-09-13

并不是所有出现在本数据库中的公司名称和产品都满足了UL跟踪检验服务的要求。只有带有UL标志的产品，才应该被视为经过UL认证，并满足UL跟踪检验服务的要求。注意查看产品上的标志。

UL允许在线认证目录中所含材料的复制遵循以下条件：1.指南信息、装配、构造、设计、系统和/或认证（文件）必须在不篡改任何数据（或图纸）的情况下完整且无误性地呈现。2.“经UL允许从在线认证目录转载”声明必须出现在所摘取材料的邻近位置。此外，转载材料必须包含以下格式的版权声明：“© 2019 UL LLC”