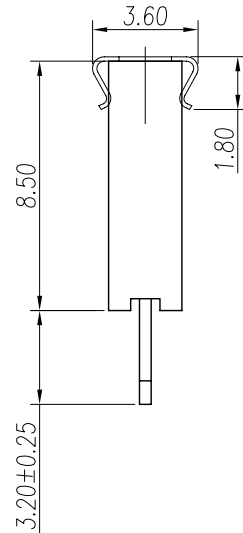
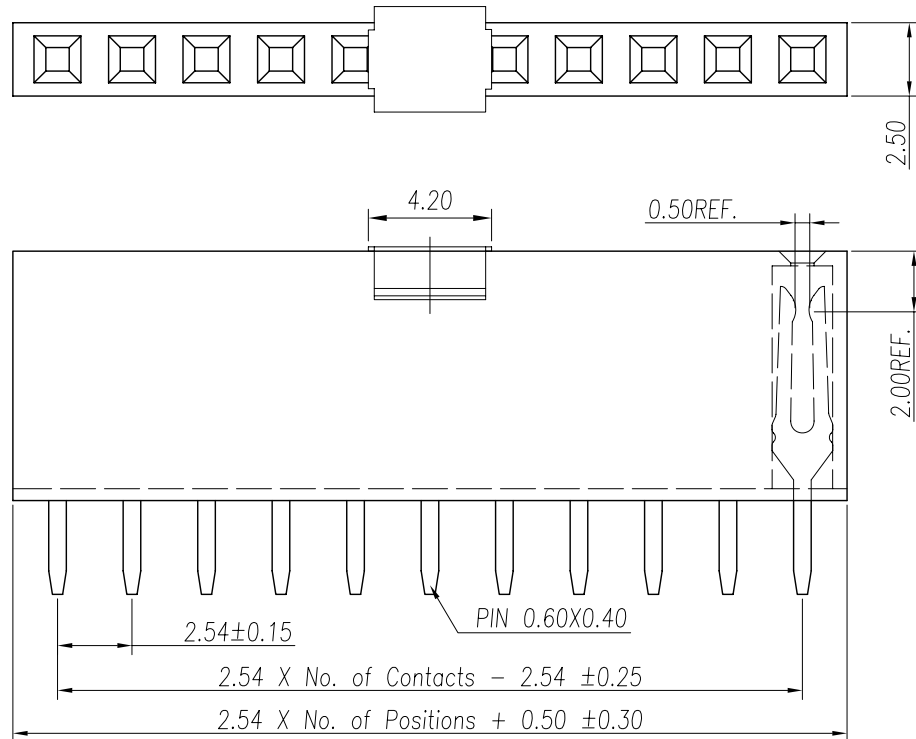


REV.	LOCAS.	DESCRIPTION	DATE	DRAWN
03	△	變更料號	2009.03.03	李彬彬
04	△	依上級要求變更圖號	2011.08.11	李芳忠



Specifications  
 Current Rating: 3Amp  
 Insulation Resistance: 1000MΩMin.  
 Dielectric Withstanding Voltage: 600VAC  
 Contact Resistance: 20mΩMax.  
 Operating Temperature: -40°C to +105°C  
 Materials  
 Contact Material: Phosphor Bronze  
 Insulator Material: Thermoplastic, UL 94V-0  
 PBT or the equivalent material  
 All materials must meet Greenconn  
 requirement for environment protection.

△ Ordering Information △

C SHA101 - XX XX A 001 A X A X

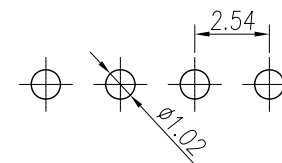
No. Of Pins Per Row  
02~40

Standard Plating  
02=Gold Flash  
Selective Plating  
01=Tin  
05=Gold Flash/Tin

Color  
1=Black  
6=Gray  
K=Pink

Standard Packing  
A=Box  
Selective Packing  
C=Tube  
E=Cap+Tube  
F=Cap+Tape&Reel

Recommended P.C.Board  
 Layout  
 (Tolerance: ±0.05)



格菱股份有限公司  
**Greenconn Corporation**

GENERAL TOLERANCE		DESIGN:	李芳忠	DATE:	2011.08.11
X.'±5.0'	X.±0.30	CHECKED:	劉北平	DATE:	2011.08.11
.X'±3.0'	.X±0.25	AUDITED:	李輝	DATE:	2011.08.11
.XX'±2.0'	.XX±0.15	APPROVED:	cc_li	DATE:	2011.08.11
.XXX'±1.0'	.XXX±0.10				

DWG. NO.	△△ CSHA101-CA1AA
PART NO.	△ CSHA101-XXXX A001AXAX

TITLE.  
 2.54 FEMALE HEADER  
 SINGLE ROW DIP TYPE  
 CONNECTOR

REV.	04	UNIT.	mm	SCALE.	4:1	PAGE.	1/1	
------	----	-------	----	--------	-----	-------	-----	--