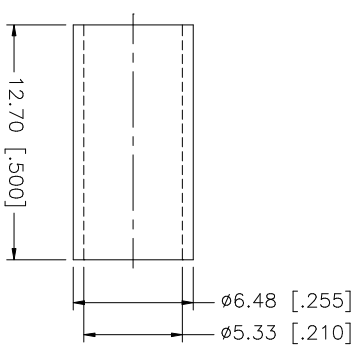
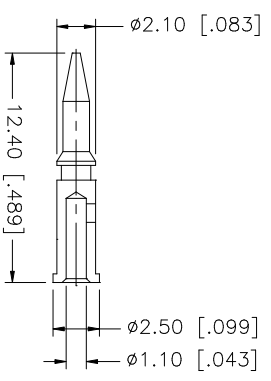
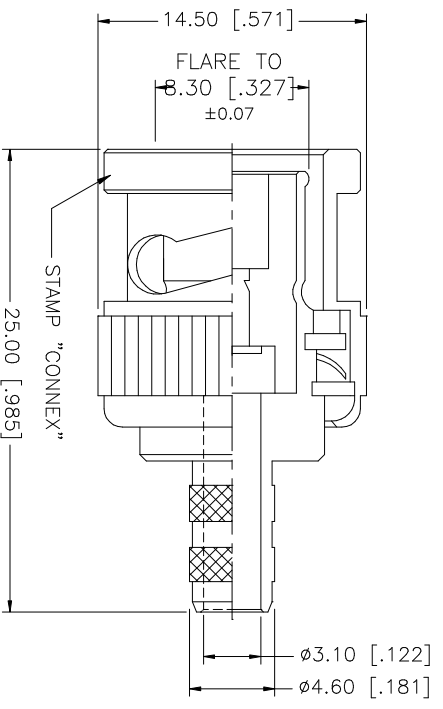
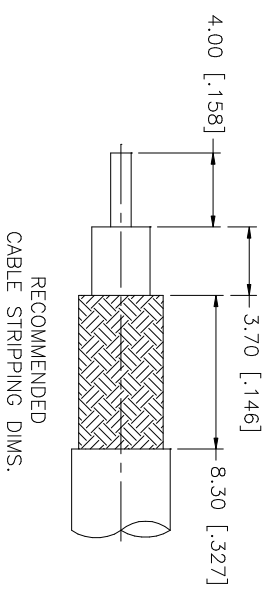


REV.	DATE	DESCRIPTION
A	04/04/03	UPDATE DRAWING FORMAT



8						<p>UNLESS OTHERWISE SPECIFIED DIMENSIONS ARE IN MILLIMETERS. DIMENSIONS IN [] ARE IN INCHES AND FOR CUSTOMER REFERENCE ONLY.</p> <p>UNLESS OTHERWISE SPECIFIED TOLERANCES FOR MILLIMETERS ARE:</p> <p>0.5 - 8mm ± 0.20mm 8 - 30mm ± 0.40mm 30 - 120mm ± 0.50mm</p> <p>UNLESS OTHERWISE SPECIFIED TOLERANCES FOR INCHES ARE:</p> <p>.020 - .315 = ± 0.007" .315 - 1.180 = ± 0.015" 1.180 - 4.724 = ± 0.020"</p> <p>DO NOT SCALE DRAWING</p>			
7									
6									
5									
4	FERRULE	COPPER	NICKEL	1					
3	CONTACT PIN	BRASS	GOLD	1					
2	INSULATOR	DELRIN	NATURAL	1					
1	SHELL/BODY	BRASS	NICKEL	1					
	DESCRIPTION	MATERIAL	FINISH	QTY					
		APPROVALS		DATE					
		DRAWN G.R.S.		04/04/03					
		CHECKED							
		ISSUED							
		SHEET 1 OF 1							
		PART NO.							
		PART NO.							
		DWG. NO.							
		112116.DWG							
		REV. A							
		SIZE A							
		SCALE NA							
<h1>Amphenol Connex</h1> <p>BNC CRIMP PLUG (FOR RG-58C/U CABLE)</p> <p>112116</p>									