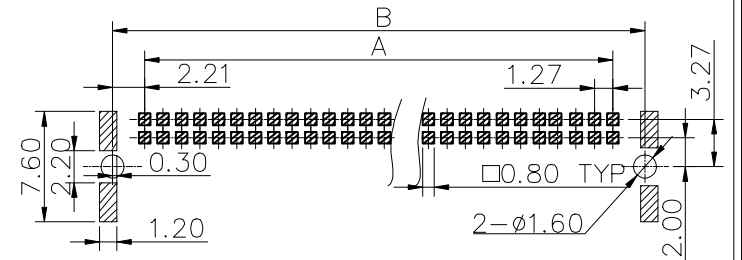


REV.	LOCAS.	DESCRIPTION	DATE	DRAWN
03	▲	依業務要求新增可生產PIN數	2019.01.05	馮國東
04	▲	依客戶要求修改電氣特性	2021.04.29	何東華

Specifications
 Current Rating: 1.70Amp/PIN.▲
 Insulation Resistance: 10000MΩMin.
 Dielectric Withstanding Voltage: 500VAC
 Contact Resistance: 25mΩMax.
 Operating Temperature: -55°C to +125°C
 Materials
 Contact Material: Phosphor Bronze
 Insulator Material: High Temperature Thermoplastic, UL 94V-0 LCP or the equivalent material
 Colour: Black
 All materials must meet Greenconn hazardous substances control standard.

PIN NO.	A	B	C	D	E
2X06	6.35	10.77	12.70	9.37	8.37
2X08	8.89	13.31	15.24	11.91	10.91
2X10	11.43	15.85	17.78	14.45	13.45
2X13	15.24	19.66	21.59	18.26	17.26
2X16	19.05	23.47	25.40	22.07	21.07
2X20	24.13	28.55	30.48	27.15	26.15
2X25	30.48	34.90	36.83	33.50	32.50
2X34	41.91	46.33	48.26	44.93	43.93
2X40	49.53	53.95	55.88	52.55	51.55

Pin No.	Dim.F
≤25Pin	0.12
>25Pin	0.15



Recommended P.C.Board Layout
 (Tolerance: ±0.05)

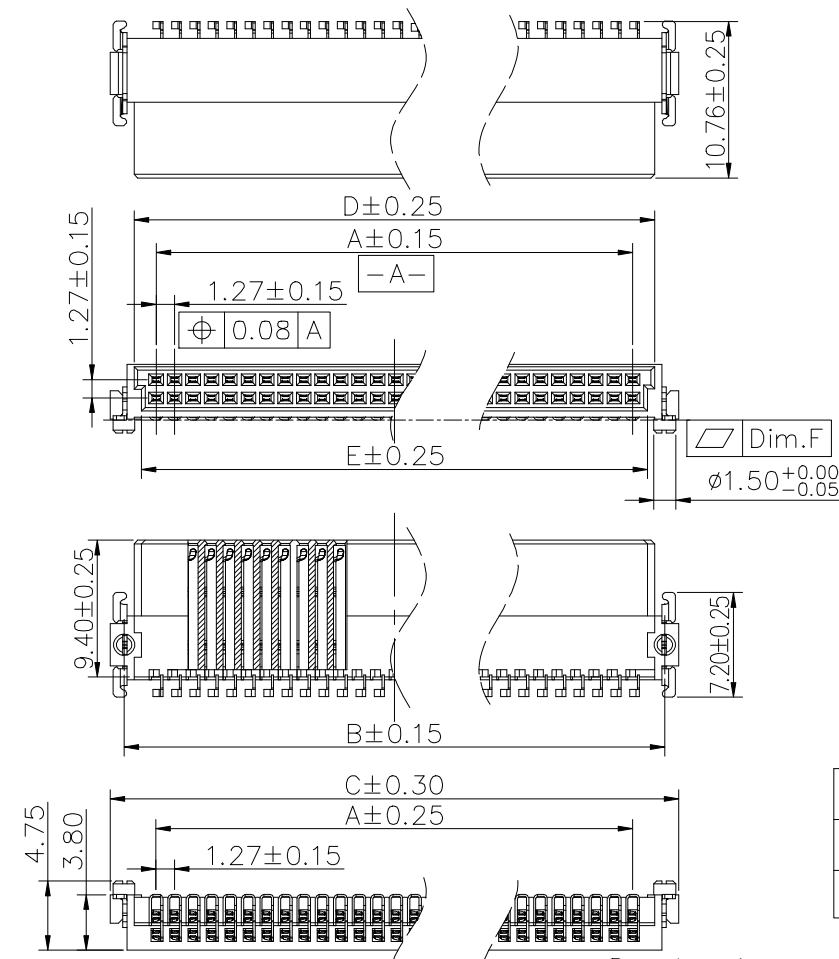
Ordering Information

CBED201 - XX XX B 002 C 1 S X

No. of Pins per Row
 06,08,10,13,16,20,25,34,40

Standard Plating
 79=5u" Au/80~160u" Matte Tin
 77=15u" Gold/Matte Tin
 78=30u" Gold/Matte Tin

Standard Packing
 D=Tape&Reel



3RD.ANG PROJ.
 3RD.ANG PROJ.
 PAGE. 1/1

GENERAL TOLERANCE	
X.±5.0'	X.±0.30
.X'±3.0'	.X±0.25
.XX'±2.0'	.XX±0.15
.XXX'±1.0'	.XXX±0.10

DESIGNED: 何東華 DATE: 2021.04.29
 CHECKED: DATE:
 APPROVED: DATE:

DWG. NO. CBED201-CB2CS
 PART NO. CBED201-XX XX B002C1SX

TITLE. Pitch1.27 Female Connector SMC 90° TYPE-Q SMT TYPE