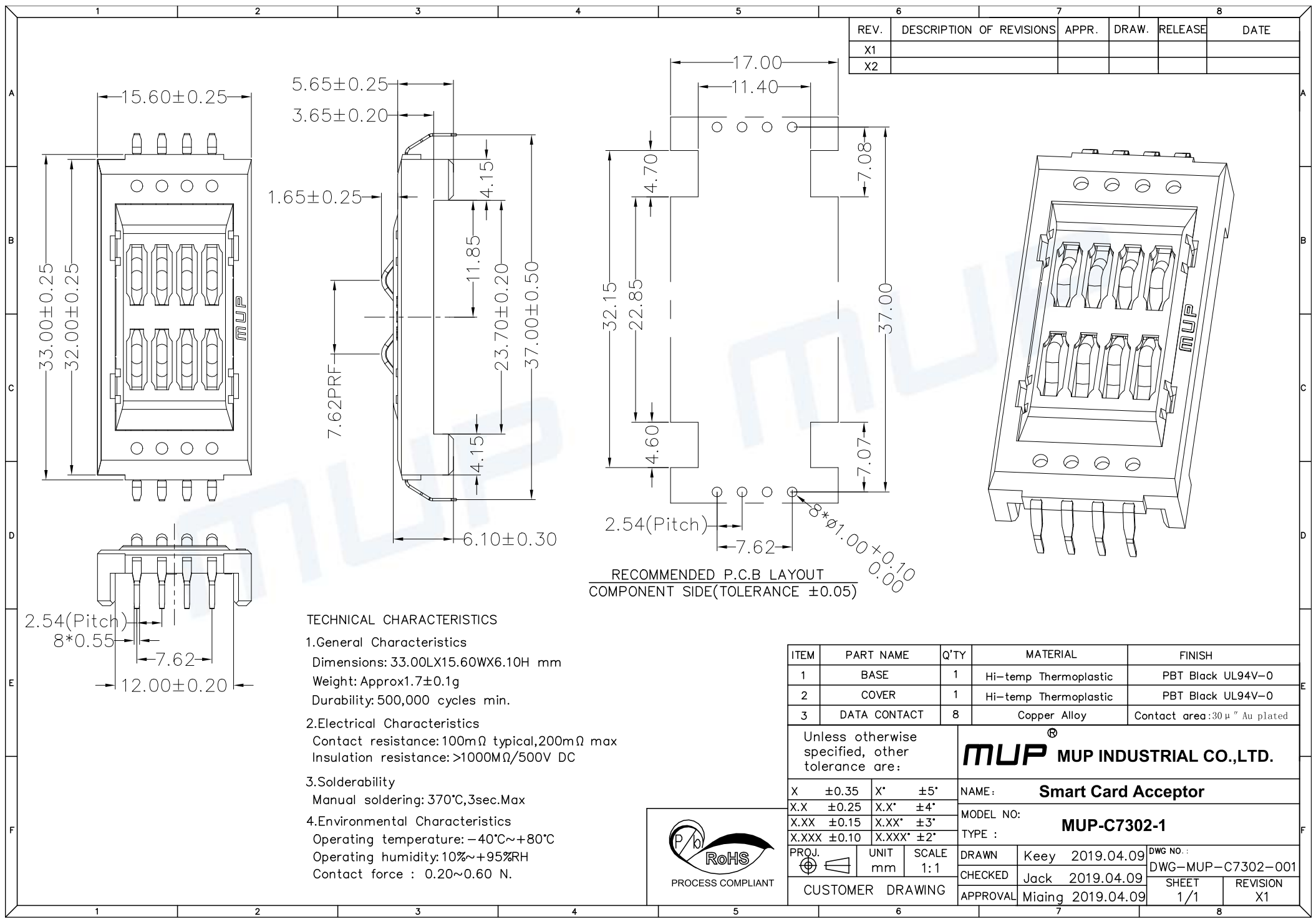


REV.	DESCRIPTION OF REVISIONS	APPR.	DRAW.	RELEASE	DATE
X1					
X2					



RECOMMENDED P.C.B LAYOUT
COMPONENT SIDE(TOLERANCE ±0.05)

TECHNICAL CHARACTERISTICS

1.General Characteristics
 Dimensions: 33.00LX15.60WX6.10H mm
 Weight: Approx1.7±0.1g
 Durability: 500,000 cycles min.

2.Electrical Characteristics
 Contact resistance: 100mΩ typical, 200mΩ max
 Insulation resistance: >1000MΩ/500V DC

3.Solderability
 Manual soldering: 370°C, 3sec. Max

4.Environmental Characteristics
 Operating temperature: -40°C~+80°C
 Operating humidity: 10%~+95%RH
 Contact force : 0.20~0.60 N.

ITEM	PART NAME	Q'TY	MATERIAL	FINISH
1	BASE	1	Hi-temp Thermoplastic	PBT Black UL94V-0
2	COVER	1	Hi-temp Thermoplastic	PBT Black UL94V-0
3	DATA CONTACT	8	Copper Alloy	Contact area: 30 μ " Au plated

Unless otherwise specified, other tolerance are:

X	±0.35	X'	±5*
X.X	±0.25	X.X'	±4*
X.XX	±0.15	X.XX'	±3*
X.XXX	±0.10	X.XXX'	±2*

PROJ. UNIT mm SCALE 1:1

MUP MUP INDUSTRIAL CO.,LTD.

NAME: **Smart Card Acceptor**

MODEL NO: **MUP-C7302-1**

TYPE :

DRAWN	Keey	2019.04.09	DWG NO.:	DWG-MUP-C7302-001
CHECKED	Jack	2019.04.09	SHEET	1/1
APPROVAL	Miaing	2019.04.09	REVISION	X1

