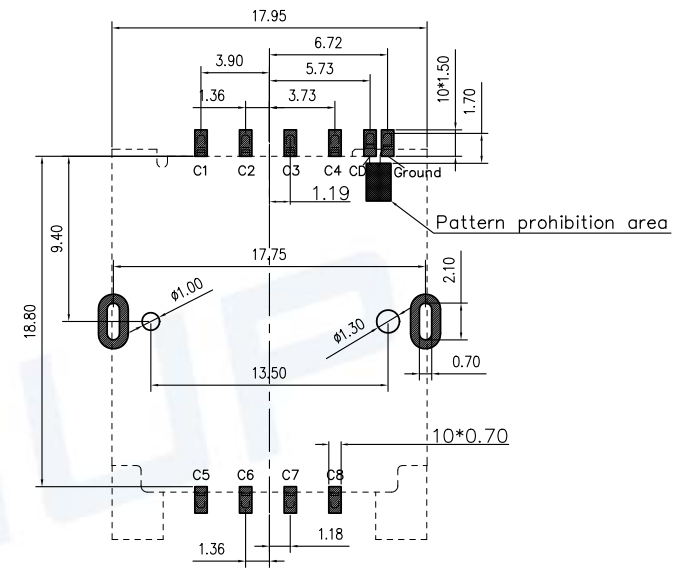
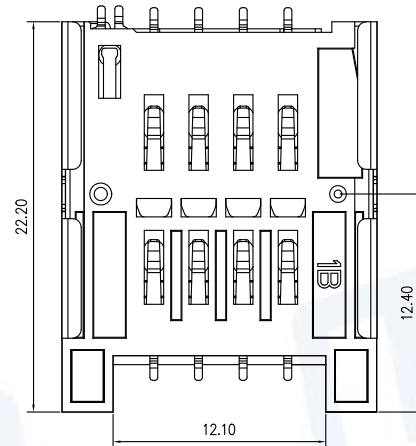
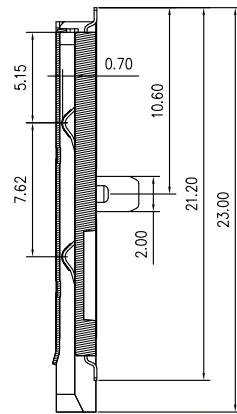
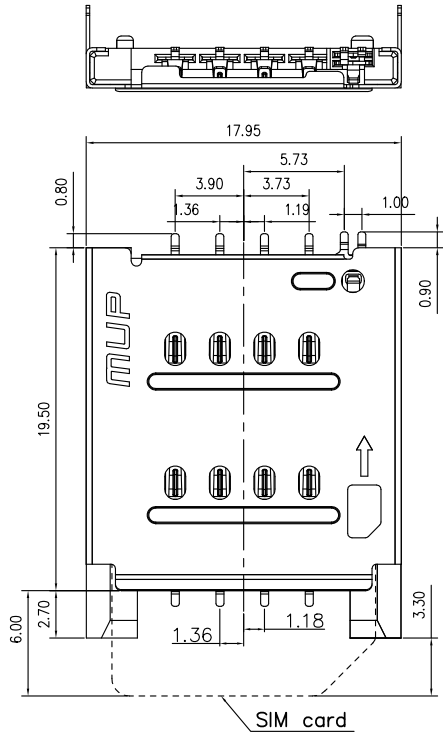


REV.	DESCRIPTION OF REVISIONS	APPR.	DRAW.	RELEASE	DATE
X1					
X2					

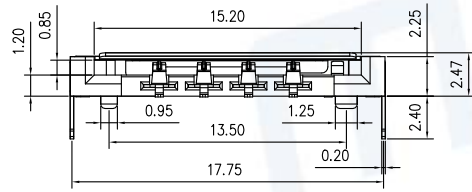
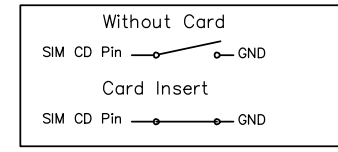


RECOMMENDED P.C.B LAYOUT  
COMPONENT SIDE(TOLERANCE ±0.05)

Pin Assignment:

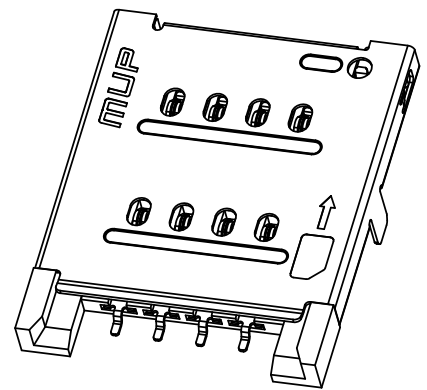
C1	VCC
C2	RST
C3	CLK
C4	Reserved
C5	GND
C6	VPP
C7	I/O
C8	Reserved

SIM Card Insert



TECHNICAL CHARACTERISTICS

- General Characteristics  
Dimensions: 23.00LX18.00WX2.50 mm  
Weight: Approx1.30±0.2g  
Durability: 10,000 cycles min.
- Electrical Characteristics  
Contact resistance: 80mΩ typical, 100mΩ max  
Insulation resistance: >1000MΩ/500V DC
- Solderability  
IR reflow: 260°C, 10sec. Max  
Manual soldering: 370°C, 3sec. Max
- Environmental Characteristics  
Operating temperature: -40°C~+85°C  
Operating humidity: 10%~+95%RH



ITEM	PART NAME	Q'TY	MATERIAL	FINISH
1	HOUSING	1	Hi-temp Thermoplastic	Black UL94V-0
2	DATA CONTACT	8	Copper Alloy	Contact area:Gold plated
3	SHELL	1	Stainless Steel	Soldertails area:Gold plated
4	SW	2	Copper Alloy	Contact area:Gold plated

Unless otherwise specified, other tolerance are:

X	±0.35	X'	±5'
X.X	±0.25	X.X'	±4'
X.XX	±0.15	X.XX'	±3'
X.XXX	±0.10	X.XXX'	±2'

PROJ. UNIT mm SCALE 1:1

**MUP** MUP INDUSTRIAL CO.,LTD.

NAME: **SIM Card Connector**

MODEL NO: **MUP C754-1**

TYPE: **H2.4 with post 8p**

DRAWN	Jimmy July.25.2015	DWG NO.:	DWG-MUP-C754-001
CHECKED	Jimmy July.25.2015	SHEET	1/1
APPROVAL	Jun July.25.2015	REVISION	X1

CUSTOMER DRAWING

