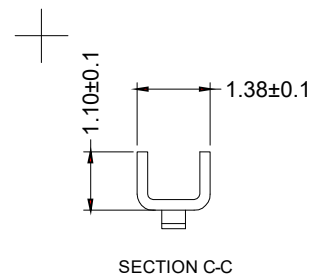
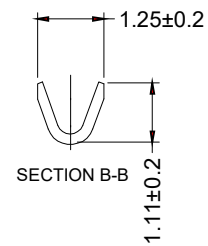
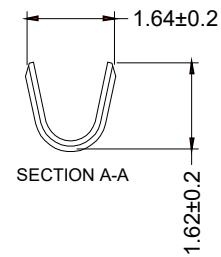
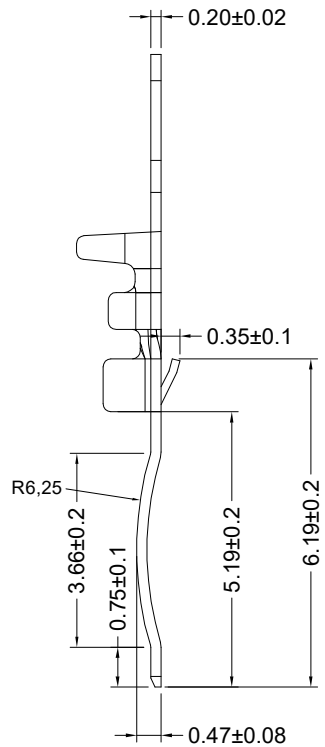
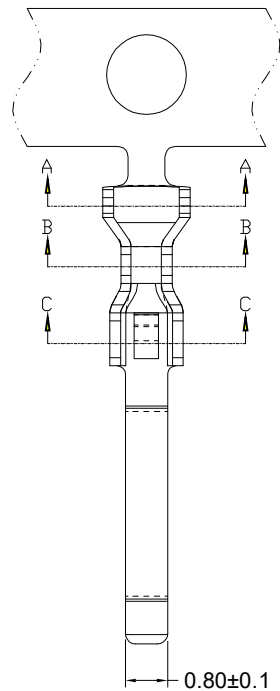


修订 REV	标记 MARK	修改摘要 REVISION DESCRIPTION	签名 SIGNATURE	日期 DATE
A0		NEW DWG		2020-07-22



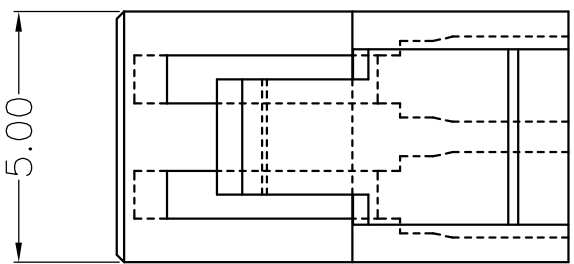
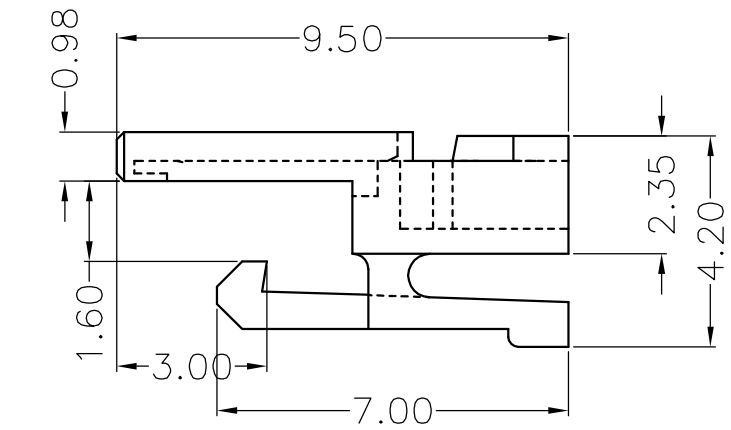
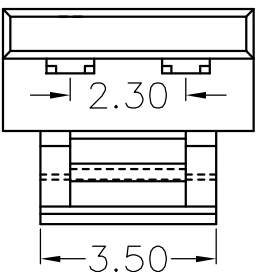
材质: 磷铜 C5191 0.20±0.02mm
 电镀: 先镀后冲, 镀锡镍底


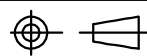


深圳市华德共创科技有限公司
 Shenzhen Huade co-create Technology Co.,LTD
 电话: 0755-27129737 传真: 0755-29940187

-TOLERANCES- UNLESS OTHERWISE SPECIFIED 公差参数表				TITLE: 2301线端端子 产品名称: 2301线端端子			
X.X ±0.30	X.X* ±3°	APPD: 核准: 谢亮		PART NO: HDGC2301-T 产品编号:			
X.XX ±0.30	X.XX* ±2°	CHECK: 校对: 王建业		DATE	SCALE	UNIT	CODE NUMBER
X.XXX ±0.10	X.XXX* ±1°	DRAW: 绘图: 黄艳兰		2020-07-22	1:1	mm	A001

修订 REV	标记 MARK	修改摘要 REVISION DESCRIPTION	签名 SIGNATURE	日期 DATE
A0		NEW DWG		2020-07-22



		深圳市华德共创科技有限公司 Shenzhen Huade co-create Technology Co.,LTD 电话: 0755-27129737 传真: 0755-29940187			
-TOLERANCES- UNLESS OTHERWISE SPECIFIED 公差参数表				TITLE: 产品名称: 2301H	
X.X ±0.30	X.X* ±3°	APPD: 核准: 谢亮		PART NO: 产品编号: HDGC2301H	
X.XX ±0.30	X.XX* ±2°	CHECK: 校对: 王建业		DATE	SCALE
X.XXX ±0.10	X.XXX* ±1°	DRAW: 绘图: 黄艳兰		2020-07-22	1:1
				UNIT	CODE NUMBER
				mm	A001