

# REED SWITCH MKA-20101

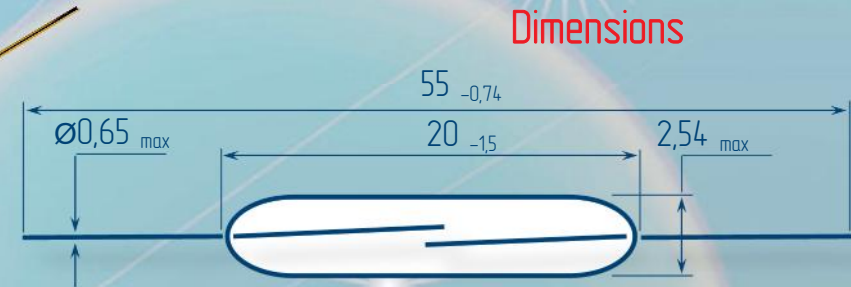
## CONTACT FORM A NORMALLY OPEN CONTACTS

Switching current 0,5 A

Switching power 10 W, VA

Switching voltage 180 V

Pull in range 10...42 AT



### Electrical Data

Release range, AT, min	4
Carry current, A	0,5
Breakdown voltage	less 20 A more 20 A
V, not less, AC/DC	160/220 200/280
Resetting Ratio	0,35...0,9
Contact resistance, $\Omega$ , not more	0,15
Operating time including bounce, ms, not more	1
Release time including bounce ms, not more	0,3
Capacitance, pF, not more	0,4
Insulation resistance, G $\Omega$ , not less	1
Operating frequency, Hz	100
Switching current frequency, kHz, not more	10

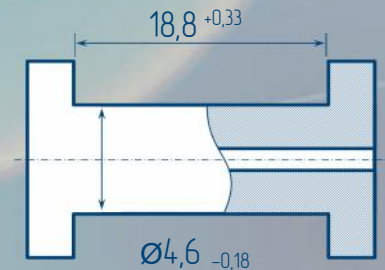
### Environmental Data

Contact material	Ru
Life expectancy, switching cycles $\times 10^6$ max load power... low load power	0,01...100
Vibration (1...2000 Hz), g, not more	20
Resonant frequency, Hz	2600
Shock (1 $\pm$ 0,3) ms, g, not more	150
Weight, g, not more	0,36
Operating temperature, $^{\circ}\text{C}$	-60...125
Humidity, %, not more	98

### Certificates



### Test Coil



### Order information

Delivery of reed switches with formed and/or cropped leads and with narrow pull in ranges is available by agreements.

5000 turns, wire  $\varnothing 0,063$  mm  
coil resistance 550



RYAZAN METAL CERAMICS INSTRUMENTATION PLANT, JSC  
51V, Novaya St., 390027, Ryazan, Russia  
Phone: +7 (4912) 240-234, Факс: +7 (4912) 240-234 E-mail: ives@rmcip.ru

Update on 19 November 2013

