

REED SWITCH MKA-14103

CONTACT FORM A NORMALLY OPEN CONTACTS

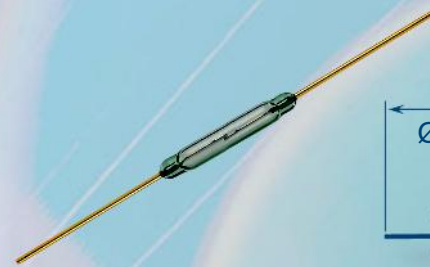
Reed relays, Security, Limit switching, Telecoms, Office equipment

Switching current 0,5 A

Switching power 10 W, VA

Switching voltage 100 V

Pull in range 8...35 AT



Electrical Data

Release range, AT, min	4
Carry current, A	1,0
Breakdown voltage	less 20 A more 20 A
V, not less, AC/DC	160/220 180/250
Resetting Ratio	0,35...0,9
Contact resistance, Ω , not more	0,1
Operating time including bounce, ms, not more	1
Release time including bounce ms, not more	0,4
Capacitance, pF, not more	0,7
Insulation resistance, G Ω , not less	10
Operating frequency, Hz	100
Switching current frequency, kHz, not more	10

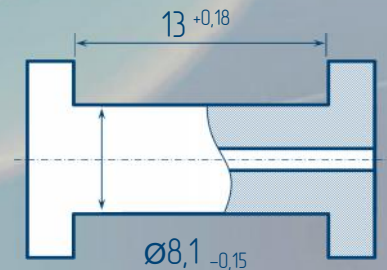
Environmental Data

Contact material	Ru
Life expectancy, switching cycles $\times 10^6$ max load power... low load power	0,5...100
Vibration (1...2000 Hz), g, not more	40
Resonant frequency, Hz	4000
Shock (1 \pm 0,3) ms, g, not more	150
Weight, g, not more	0,14
Operating temperature, $^{\circ}\text{C}$	-60...155
Humidity, %, not more	98

Certificates



Test Coil



5000 turns, wire $\varnothing 0,063$ mm
coil resistance 870

Order information

Delivery of reed switches with formed and/or cropped leads and with narrow pull in ranges is available by agreements.