

REED SWITCH MKA-14103

CONTACT FORM A NORMALLY OPEN CONTACTS

Reed relays, Security, Limit switching, Telecoms, Office equipment

Switching current 0,5 A

Switching power 10 W, VA

Switching voltage 100 V

Pull in range 8...35 AT

Electrical Data

Release range, AT, min	4
Carry current, A	1,0
Breakdown voltage	less 20 A more 20 A
V, not less, AC/DC	160/220 180/250
Resetting Ratio	0,35...0,9
Contact resistance, Ω , not more	0,1
Operating time including bounce, ms, not more	1
Release time including bounce ms, not more	0,4
Capacitance, pF, not more	0,7
Insulation resistance, G Ω , not less	10
Operating frequency, Hz	100
Switching current frequency, kHz, not more	10



Environmental Data

Contact material	Ru
Life expectancy, switching cycles x10 ⁶ max load power... low load power	0,5...100
Vibration (1...2000 Hz), g, not more	40
Resonant frequency, Hz	4000
Shock (1±0,3) ms, g, not more	150
Weight, g, not more	0,14
Operating temperature, °C	-60...155
Humidity, %, not more	98

Order information

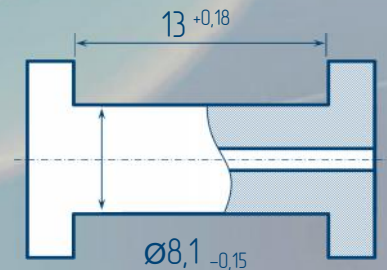
Delivery of reed switches with formed and/or cropped leads and with narrow pull in ranges is available by agreements.

Dimensions

Certificates



Test Coil



5000 turns, wire $\varnothing 0,063$ mm
coil resistance 870