

# REED SWITCH

# CONTACT FORM A NORMALLY OPEN CONTACTS

## MKA-14103

Reed relays, Security, Limit switching, Telecoms, Office equipment

Switching current	0,5 A	Switching power	10 W, VA
Switching voltage	100 V	Pull in range	8...35 AT



### Electrical Data

Release range, AT, min	4
Carry current, A	1,0
Breakdown voltage	less 20 A more 20 A
V, not less, AC/DC	160/220 180/250
Resetting Ratio	0,35...0,9
Contact resistance, Ω, not more	0,1
Operating time including bounce, ms, not more	1
Release time including bounce ms, not more	0,4
Capacitance, pF, not more	0,7
Insulation resistance, GΩ, not less	10
Operating frequency, Hz	100
Switching current frequency, kHz, not more	10

### Environmental Data

Contact material	Ru
Life expectancy, switching cycles x10 <sup>6</sup> max load power... low load power	0,5...100
Vibration (1...2000 Hz), g, not more	40
Resonant frequency, Hz	4000
Shock (1±0,3) ms, g, not more	150
Weight, g, not more	0,14
Operating temperature, °C	-60...155
Humidity, %, not more	98

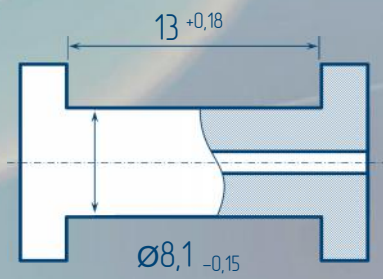
### Certificates



### Order information

Delivery of reed switches with formed and/or cropped leads and with narrow pull in ranges is available by agreements.

### Test Coil



5000 turns, wire Ø0,063 mm coil resistance 870