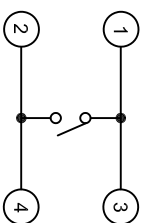
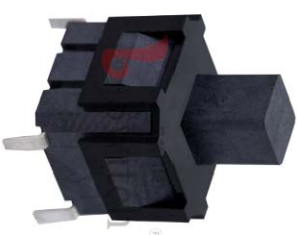


P.C.B LAND DIMENSION

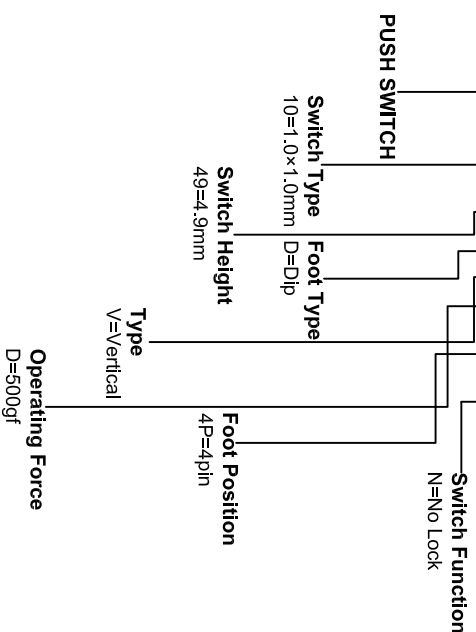


CIRCUIT DIAGRAM

PUSH-ON:
1-3,2-4 Conduction
PUSH-OFF
No Conduction



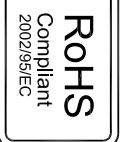
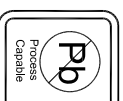
PS-1049DVD-4PN



G-Switch Specification:

Operating temperature range: -40°C to +85°C
 Rating: 0.5A, 24V DC
 Insulation resistance: 100MΩ min., 100V DC
 Dielectric strength: 250V AC for 1 min
 Contact resistance: 100m Ω max.
 Switch lifetime: 30,000Cycles

8	TERMINAL	BRASS	6	Ag PLATED
7	CASE	PPA	1	BLACK
6	LOCK PIN	SUS WIRE	1	NATURAL
5	SPRING	SUS WIRE	1	NATURAL
4	CONTACT	BRONZE	2	Ag PLATED
3	KNOB	PPA	1	WHITE
2	COVER	PPA	1	BLACK
NO.	PART NAME	MATERIAL	QTY	FINISHING



	Unless otherwise specified, Tolerance:	
	X	±0.30
	X.X	±0.20
	X.XX	±0.15
	X.XXX	±0.10
Angles	±3°	

G-Switch Electronic (HongKong) CO., Ltd.		Molde code: PS-1049DVD-4PN	
DESIGN	Feng?	DATE	2022.08.12
CHECKED		DATE	
APPROVED		DATE	
http://www.dg-switch.com		REV.	X1
TEL:0769-82388879		SCALE:	4:1
		SHEET:	1/1
		UNIT:	mm