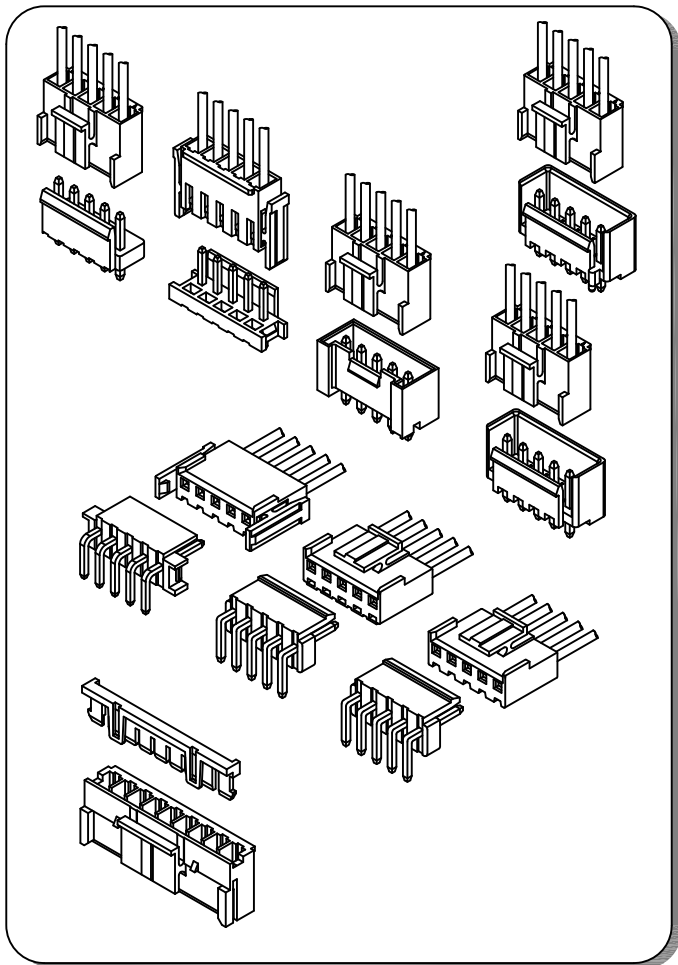


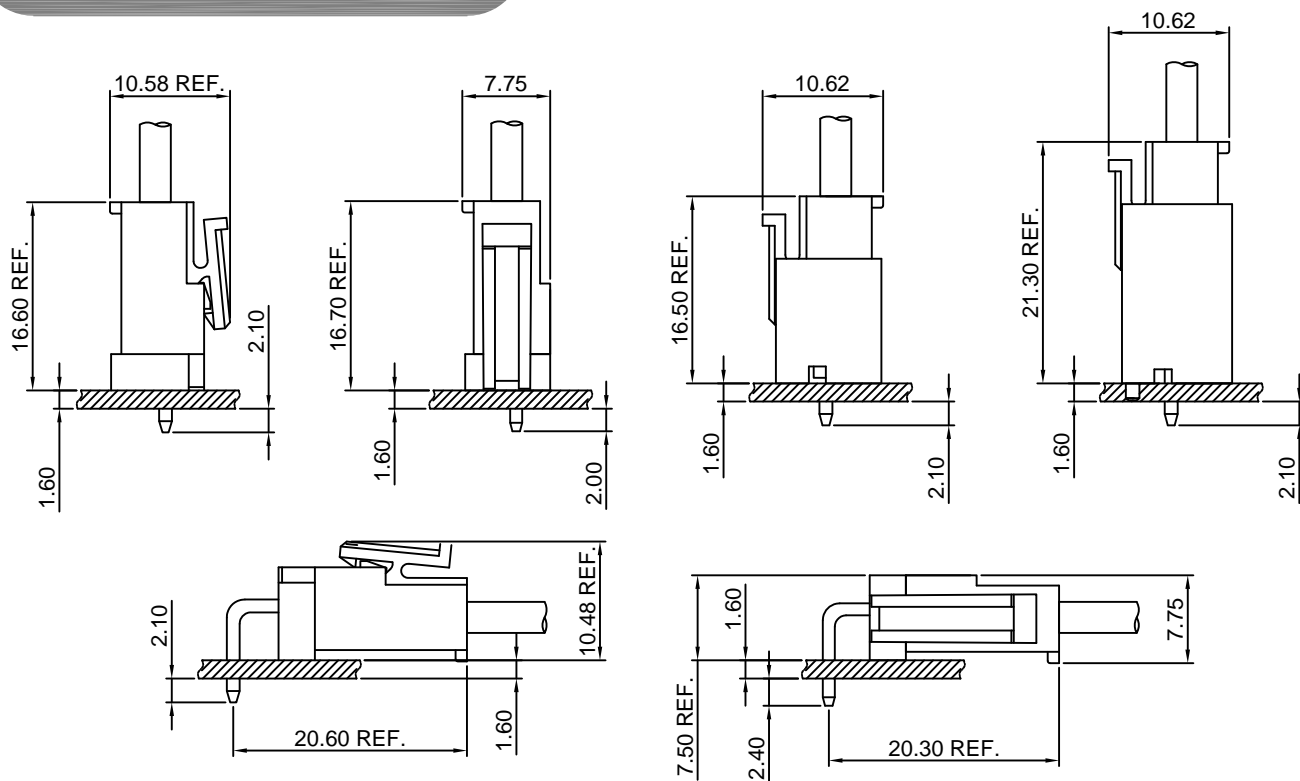
### Specifications

- Current rating:10A AC,DC(AWG #16)
- Voltage rating:250V AC,DC
- Temperature range:-40°C~+105°C
- Contact resistance:10mΩMax.
- Insulation resistance:1000MΩMin.
- Withstanding voltage:1500V AC/minute
- \*Compliant with RoHS and REACH\*
- \*Meet the HF/Halogen Free,GWT/Glow wire Test (IEC60335-1) request,need to customize\*
- \*Contact CJT for details\*

### Standards



### Assembly layout

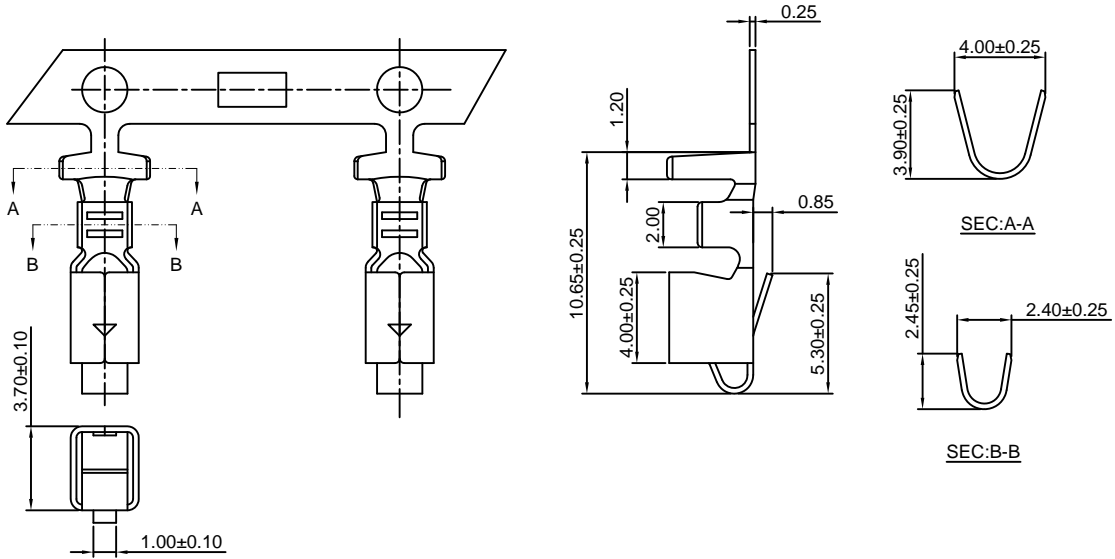


**A3963-T**

3.96mm pitch Crimp Terminal

**Reference Informations:**

\*Used in CJT A3963H,HA,HB,HC-XP,A5001H,HA-XP,A7921H-2P series Housing



Ordering information & Specifications:

Unit:mm

| Part NO. | Wire Range | Insulation O.D. | Material        | Finish           | Qty/reel  |
|----------|------------|-----------------|-----------------|------------------|-----------|
| A3963-TB | AWG#18-#22 | 3.00mm(max)     | Brass           | Tin over Nickel  | 4,000 PCS |
| A3963-TP | AWG#18-#22 | 3.00mm(max)     | Phosphor Bronze | Tin over Nickel  | 4,000 PCS |
| A3963-GB | AWG#18-#22 | 3.00mm(max)     | Brass           | Gold over Nickel | 4,000 PCS |
| A3963-GP | AWG#18-#22 | 3.00mm(max)     | Phosphor Bronze | Gold over Nickel | 4,000 PCS |

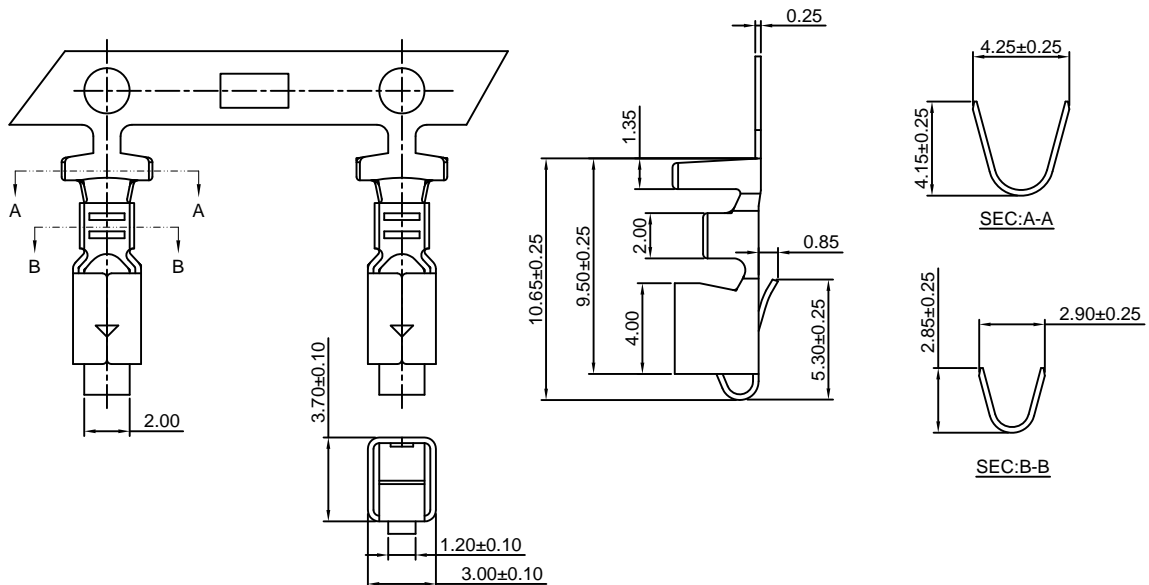
Optional Gold plating available but MOQ requested

**A3963-T-H**

3.96mm pitch Crimp Terminal

**Reference Informations:**

\*Used in CJT A3963H,HA,HB,HC-XP,A5001H,HA-XP,A7921H-2P series Housing



Ordering information & Specifications:

Unit:mm

| Part NO.   | Wire Range | Insulation O.D. | Material        | Finish           | Qty/reel  |
|------------|------------|-----------------|-----------------|------------------|-----------|
| A3963-TB-H | AWG#16-#20 | 3.40mm(max)     | Brass           | Tin over Nickel  | 4,000 PCS |
| A3963-TP-H | AWG#16-#20 | 3.40mm(max)     | Phosphor Bronze | Tin over Nickel  | 4,000 PCS |
| A3963-GB-H | AWG#16-#20 | 3.40mm(max)     | Brass           | Gold over Nickel | 4,000 PCS |
| A3963-GP-H | AWG#16-#20 | 3.40mm(max)     | Phosphor Bronze | Gold over Nickel | 4,000 PCS |

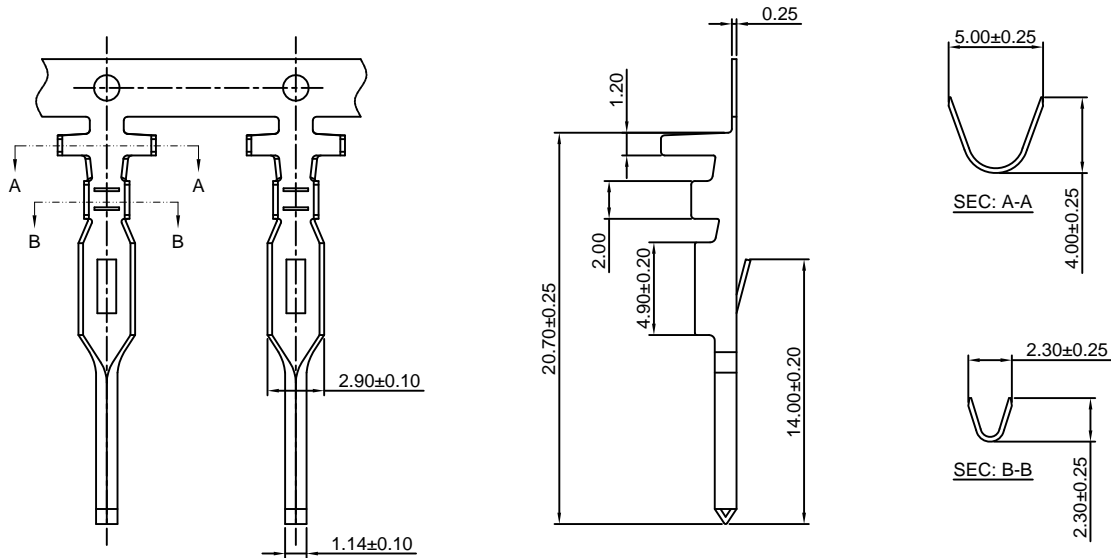
Optional Gold plating available but MOQ requested

### A3963M-T

3.96mm pitch Crimp Terminal

**Reference Informations:**

\*Used in CJT A3963HM-XP series Housing



Ordering information & Specifications:

Unit:mm

| Part NO.  | Wire Range | Insulation O.D. | Material        | Finish           | Qty/reel  |
|-----------|------------|-----------------|-----------------|------------------|-----------|
| A3963M-TB | AWG#18-#22 | 3.00mm(max)     | Brass           | Tin over Nickel  | 4,000 PCS |
| A3963M-TP | AWG#18-#22 | 3.00mm(max)     | Phosphor Bronze | Tin over Nickel  | 4,000 PCS |
| A3963M-GB | AWG#18-#22 | 3.00mm(max)     | Brass           | Gold over Nickel | 4,000 PCS |
| A3963M-GP | AWG#18-#22 | 3.00mm(max)     | Phosphor Bronze | Gold over Nickel | 4,000 PCS |

Optional Gold plating available but MOQ requested

### A3963H-XP

3.96mm pitch Housing

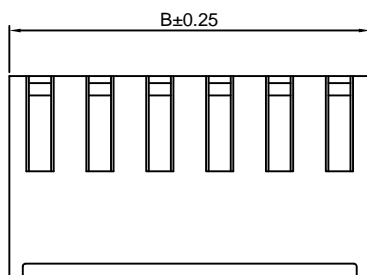
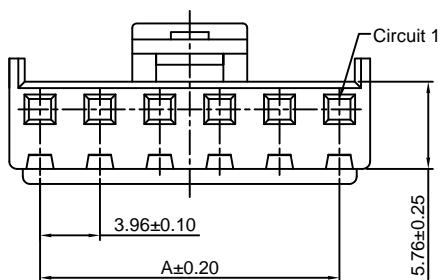
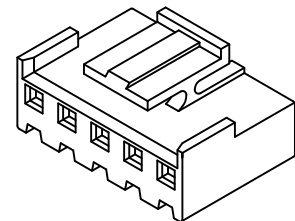
**Reference Informations:**

\*Material:Nylon 66,UL94V-0

\*Suitable CJT A3963-T(-H) series Terminal

\*Mates with CJT A3963WV,WR-XP(-A),A3963WVD,WRD-XP(-A),  
A3963WVD-F-XP(-A),A3963WVD-F-XP-H(-A),  
A3963WVD-S,WRD-S-XP(-A),A3963WRH-XP(-A),A7921WR-F-2P  
Wafer or CJT A3963HM,HMA-XP Housing

\*Color:White



**Ordering Information:**

A3963H-XP - \*\*\* - \*\*  
1 2 3

- Part No.
- Material:  
(blank):Nylon 66,UL94V-0  
GWT:Nylon 66,UL94V-0,GWT 750°C
- Color:  
(Blank):White  
BK:Black      RD:Red  
BL:Blue      GN:Green  
OR:Orange    YL:Yellow  
PK:Pink      GY:Gray

**Ordering Information & Dimensions:**

| PART NO. | Dimensions |       |
|----------|------------|-------|
|          | A          | B     |
| 2P       | 3.96       | 8.02  |
| 3P       | 7.92       | 11.98 |
| 4P       | 11.88      | 15.94 |
| 5P       | 15.84      | 19.90 |
| 6P       | 19.80      | 23.86 |
| 7P       | 23.76      | 27.82 |
| 8P       | 27.72      | 31.78 |
| 9P       | 31.68      | 35.74 |
| 10P      | 35.64      | 39.70 |
| 11P      | 39.60      | 43.66 |
| 12P      | 43.56      | 47.62 |
| 13P      | 47.52      | 51.58 |
| 14P      | 51.48      | 55.54 |
| 15P      | 55.44      | 59.50 |

Unit: mm

### A3963HA-XP

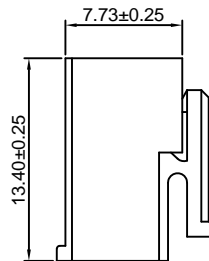
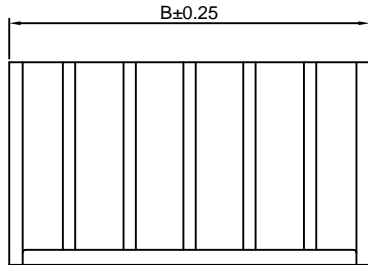
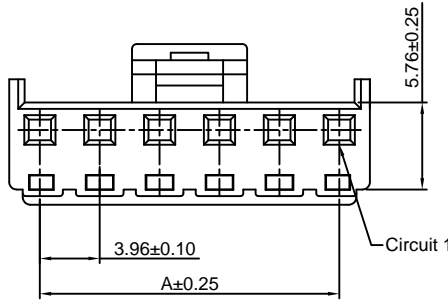
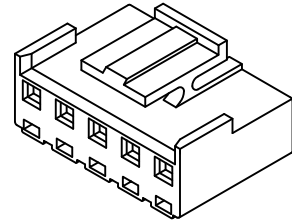
3.96mm pitch Housing

**Reference Informations:**

- \*Material:Nylon 66,UL94V-0
- \*Suitable CJT A3963-T(-H) series Terminal
- \*Mates with CJT A3963WV,WR-XP(-A),A3963WVD,WRD-XP(-A),A3963WVD-F-XP(-A),A3963WVD-F-XP-H(-A),A3963WVD-S,WRD-S-XP(-A),A3963WRH-XP(-A) series Wafer
- \*Color:White

Ordering Information:  
A3963HA-XP - \*\*\* - \*\*  
 1 2 3

- 1.Part No.
- 2.Material:  
 (blank):Nylon 66,UL94V-0  
 GWT:Nylon 66,UL94V-0,GWT 750°C
- 3.Color:  
 (Blank):White  
 BK:Black           RD:Red  
 BL:Blue           GN:Green  
 OR:Orange       YL:Yellow  
 PK:Pink           GY:Gray



**Ordering Information & Dimensions:**

| PART NO. | Dimensions |       |
|----------|------------|-------|
|          | A          | B     |
| 2P       | 3.96       | 8.02  |
| 3P       | 7.92       | 11.98 |
| 4P       | 11.88      | 15.94 |
| 5P       | 15.84      | 19.90 |
| 6P       | 19.80      | 23.86 |
| 7P       | 23.76      | 27.82 |
| 8P       | 27.72      | 31.78 |
| 9P       | 31.68      | 35.74 |
| 10P      | 35.64      | 39.70 |
| 11P      | 39.60      | 43.66 |
| 12P      | 43.56      | 47.62 |
| 13P      | 47.52      | 51.58 |
| 14P      | 51.48      | 55.54 |
| 15P      | 55.44      | 59.50 |

Unit: mm

### A3963HB-XP

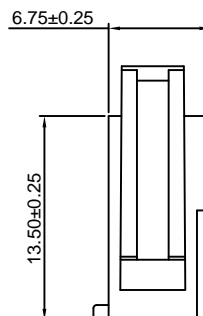
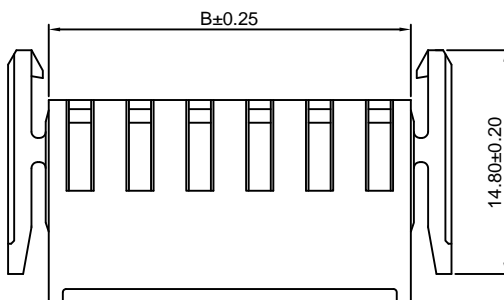
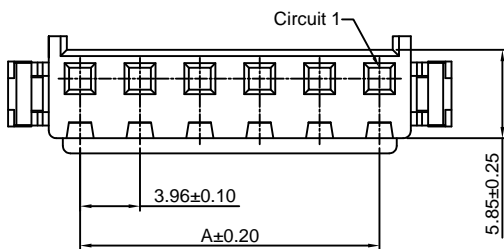
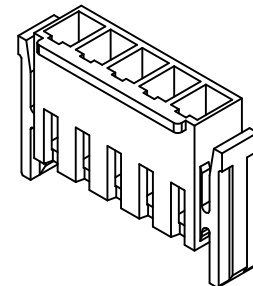
3.96mm pitch Housing

**Reference Informations:**

- \*Material:Nylon 66,UL94V-0
- \*Suitable CJT A3963-T(-H) series Terminal
- \*Mates with CJT A3963WVB,WRB-XP(-A) series Wafer
- \*Color:White

Ordering Information:  
A3963HB-XP - \*\*\*  
 1 2

- 1.Part No.
- 2.Material:  
 (blank):Nylon 66,UL94V-0  
 GWT:Nylon 66,UL94V-0,GWT 750°C



**Ordering Information & Dimensions:**

| PART NO. | Dimensions |       |
|----------|------------|-------|
|          | A          | B     |
| 2P       | 3.96       | 8.10  |
| 3P       | 7.92       | 12.06 |
| 4P       | 11.88      | 16.02 |
| 5P       | 15.84      | 19.98 |
| 6P       | 19.80      | 23.94 |
| 7P       | 23.76      | 27.90 |
| 8P       | 27.72      | 31.86 |
| 9P       | 31.68      | 35.82 |
| 10P      | 35.64      | 39.78 |
| 11P      | 39.60      | 43.74 |
| 12P      | 43.56      | 47.70 |
| 13P      | 47.52      | 51.66 |
| 14P      | 51.48      | 55.62 |
| 15P      | 55.44      | 59.58 |

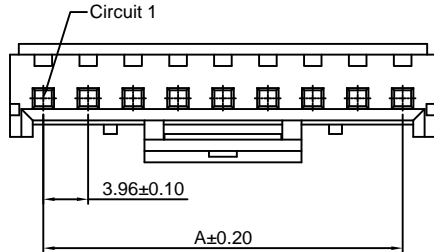
Unit: mm

### A3963HC-XP

3.96mm pitch Housing

**Reference Informations:**

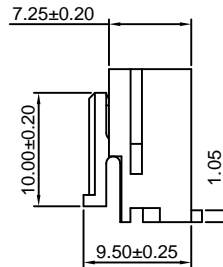
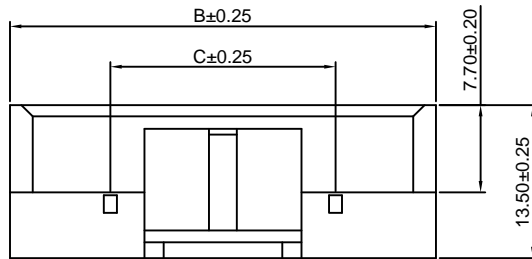
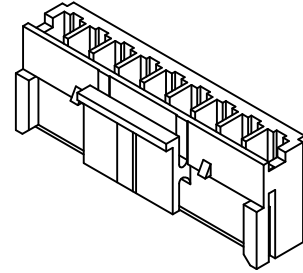
- \*Material:Nylon 66,UL94V-0
- \*Suitable CJT A3963-T(-H) series Terminal
- \*Mates with CJT A3963S-XP series Interface Seal,
- A3963WV,WR-XP(-A),A3963WRH-XP(-A) series Wafer
- \*Color:White



**Ordering Information:**

A3963HC-XP - \*\*\*  
1 2

- 1.Part No.
- 2.Material:  
(blank):Nylon 66,UL94V-0  
GWT:Nylon 66,UL94V-0,GWT 750°C



**Ordering Information & Dimensions:**

| PART NO. | Dimensions |       |       |
|----------|------------|-------|-------|
|          | A          | B     | C     |
| 2P       | 3.96       | 9.63  | ----  |
| 3P       | 7.92       | 13.59 | ----  |
| 4P       | 11.88      | 17.55 | ----  |
| 5P       | 15.84      | 21.51 | ----  |
| 6P       | 19.80      | 25.47 | ----  |
| 7P       | 23.76      | 29.43 | 19.80 |
| 8P       | 27.72      | 33.39 | 19.80 |
| 9P       | 31.68      | 37.35 | 19.80 |
| 10P      | 35.64      | 41.31 | 19.80 |
| 11P      | 39.60      | 45.27 | 27.72 |
| 12P      | 43.56      | 49.23 | 27.72 |
| 13P      | 47.52      | 53.19 | 27.72 |
| 14P      | 51.48      | 57.15 | 27.72 |
| 15P      | 55.44      | 61.11 | 27.72 |

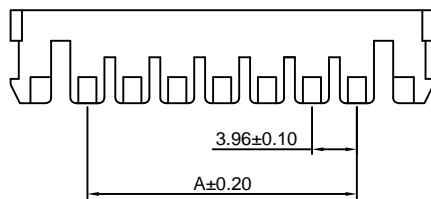
Unit: mm

### A3963S-XP

3.96mm pitch Interface Seal

**Reference Informations:**

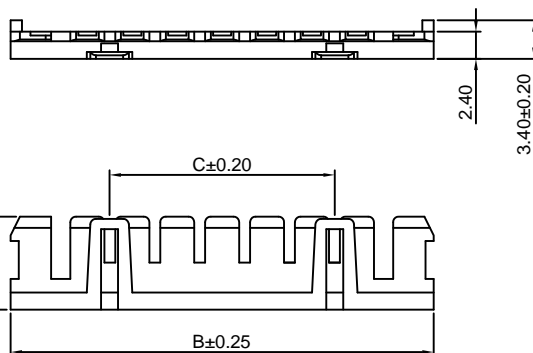
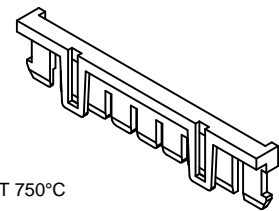
- \*Material:Insulator:Nylon 66,UL94V-0
- \*Mates with CJT A3963HC-XP series Housing
- \*Color:Red



**Ordering Information:**

A3963S-XP - \*\*\*  
1 2

- 1.Part No.
- 2.Material:  
(blank):Nylon 66,UL94V-0  
GWT:Nylon 66,UL94V-0,GWT 750°C



**Ordering Information & Dimensions:**

| PART NO. | Dimensions |       |       |
|----------|------------|-------|-------|
|          | A          | B     | C     |
| 2P       | ----       | 9.58  | ----  |
| 3P       | ----       | 13.54 | ----  |
| 4P       | 3.96       | 17.50 | ----  |
| 5P       | 7.92       | 21.46 | ----  |
| 6P       | 11.88      | 25.42 | ----  |
| 7P       | 15.84      | 29.38 | 19.80 |
| 8P       | 19.80      | 33.34 | 19.80 |
| 9P       | 23.76      | 37.30 | 19.80 |
| 10P      | 27.72      | 41.26 | 19.80 |
| 11P      | 31.68      | 45.22 | 27.72 |
| 12P      | 35.64      | 49.18 | 27.72 |
| 13P      | 39.60      | 53.14 | 27.72 |
| 14P      | 43.56      | 57.10 | 27.72 |
| 15P      | 47.52      | 61.06 | 27.72 |

Unit: mm

### A3963HM(A)-XP

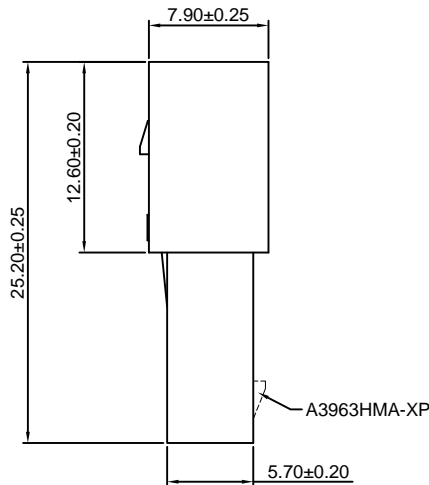
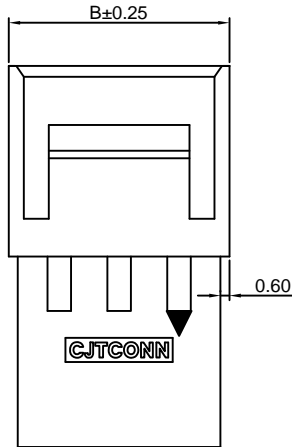
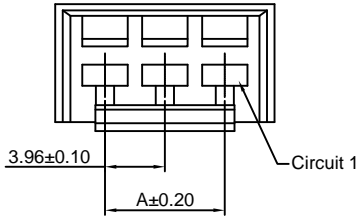
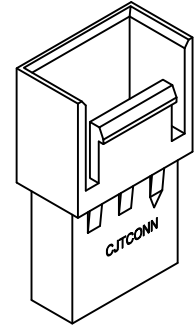
3.96mm pitch Housing

**Reference Informations:**

- \*Material:Nylon 66,UL94V-0
- \*Suitable CJT A3963M-T series Terminal
- \*Mates with CJT A3963H-XP series Housing
- \*Color:White

Ordering Information:  
A3963HM(A)-XP - \*\* - \*\*  
1 2 3

- 1.Part No.
- 2.Color:  
(Blank):White  
RD:Red  
YL:Yellow  
BL:Blue  
BK:Black  
GN:Green
- 3.Material:  
(Blank):Nylon 66,UL94V-0  
GWT:Nylon 66,UL94V-0,GWT 750°C



**Ordering Information & Dimensions:**

| PART NO. | Dimensions |       |
|----------|------------|-------|
|          | A          | B     |
| 2P       | 3.96       | 10.64 |
| 3P       | 7.92       | 14.60 |
| 4P       | 11.88      | 18.56 |
| 5P       | 15.84      | 22.52 |
| 6P       | 19.80      | 26.48 |
| 7P       | 23.76      | 30.44 |
| 8P       | 27.72      | 34.40 |
| 9P       | 31.68      | 38.36 |
| 10P      | 35.64      | 42.32 |
| 11P      | 39.60      | 46.28 |
| 12P      | 43.56      | 50.24 |
| 13P      | 47.52      | 54.20 |
| 14P      | 51.48      | 58.16 |
| 15P      | 55.44      | 62.12 |

Unit: mm

### A3963WV(-F1)-XP

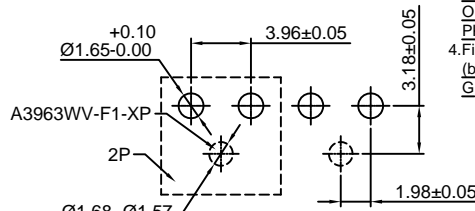
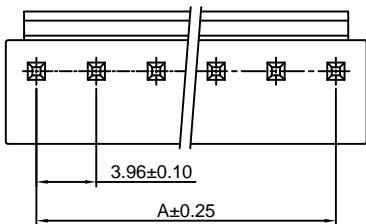
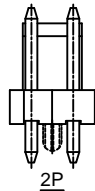
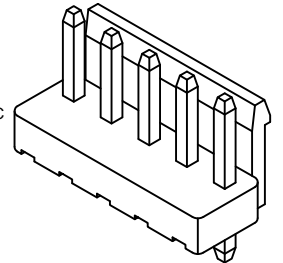
3.96mm pitch 180° Wafer

**Reference Informations:**

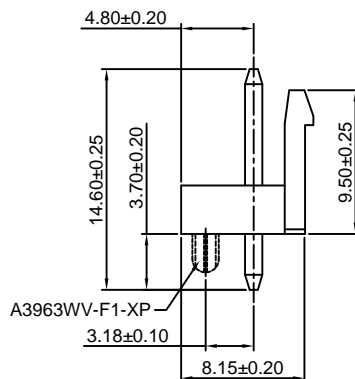
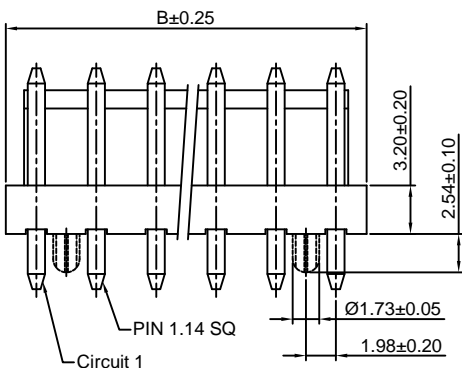
- \*Material:Pin:Brass/Tin over Nickel  
Insulator:Nylon 66,UL94V-0
- \*Mates with CJT A3963H,HA,HC-XP series Housing
- \*Color:White

Ordering Information:  
A3963WV(-F1)-XP - \*\*\* - \*\* - \*\*  
1 2 3 4

- 1.Part No.
- 2.Material:  
(blank):Nylon 66,UL94V-0  
GWT:Nylon 66,UL94V-0,GWT 750°C
- 3.Color:  
(Blank):White  
BK:Black  
BL:Blue  
OR:Orange  
PK:Pink  
RD:Red  
GN:Green  
YL:Yellow  
GY:Gray
- 4.Finish:  
(blank):Tin over Nickel  
G:Gold over Nickel



P.C.B LAYOUT



**Ordering Information & Dimensions:**

| PART NO. | Dimensions |       |
|----------|------------|-------|
|          | A          | B     |
| 2P       | 3.96       | 7.92  |
| 3P       | 7.92       | 11.88 |
| 4P       | 11.88      | 15.84 |
| 5P       | 15.84      | 19.80 |
| 6P       | 19.80      | 23.76 |
| 7P       | 23.76      | 27.72 |
| 8P       | 27.72      | 31.68 |
| 9P       | 31.68      | 35.64 |
| 10P      | 35.64      | 39.60 |
| 11P      | 39.60      | 43.56 |
| 12P      | 43.56      | 47.52 |
| 13P      | 47.52      | 51.48 |
| 14P      | 51.48      | 55.44 |
| 15P      | 55.44      | 59.40 |

Unit: mm

### A3963WR-XP

3.96mm pitch 90° Wafer

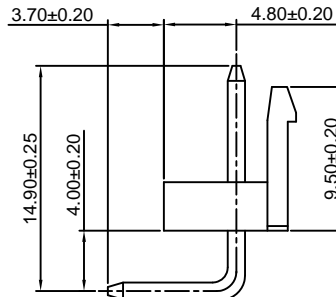
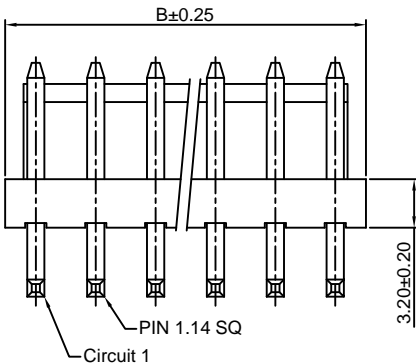
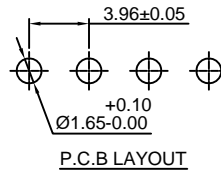
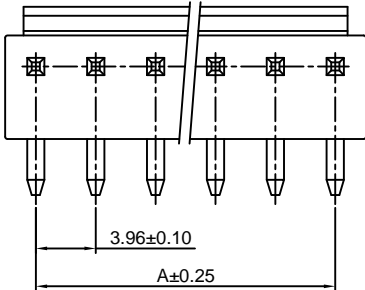
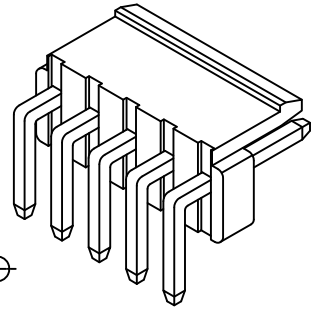
#### Reference Informations:

- \*Material: Pin: Brass/Tin over Nickel  
Insulator: Nylon 66, UL94V-0
- \*Mates with CJT A3963H, HA, HC-XP series Housing
- \*Color: White

#### Ordering Information:

A3963WR-XP - \*\*\* - \*\* - \*\*  
1 2 3 4

- Part No.
- Material:  
(blank): Nylon 66, UL94V-0  
GWT: Nylon 66, UL94V-0, GWT 750°C
- Color:  
(Blank): White  
BK: Black RD: Red  
BL: Blue GN: Green  
OR: Orange YL: Yellow  
PK: Pink GY: Gray
- Finish:  
(blank): Tin over Nickel  
G: Gold over Nickel



#### Ordering Information & Dimensions:

| PART NO. | Dimensions |       |
|----------|------------|-------|
|          | A          | B     |
| 2P       | 3.96       | 7.92  |
| 3P       | 7.92       | 11.88 |
| 4P       | 11.88      | 15.84 |
| 5P       | 15.84      | 19.80 |
| 6P       | 19.80      | 23.76 |
| 7P       | 23.76      | 27.72 |
| 8P       | 27.72      | 31.68 |
| 9P       | 31.68      | 35.64 |
| 10P      | 35.64      | 39.60 |
| 11P      | 39.60      | 43.56 |
| 12P      | 43.56      | 47.52 |
| 13P      | 47.52      | 51.48 |
| 14P      | 51.48      | 55.44 |
| 15P      | 55.44      | 59.40 |

Unit: mm

### A3963WVB-XP

3.96mm pitch 180° Wafer

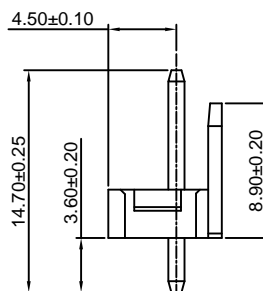
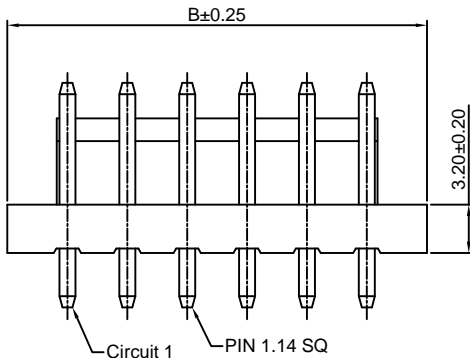
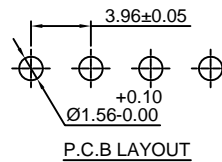
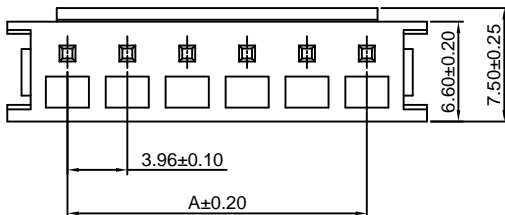
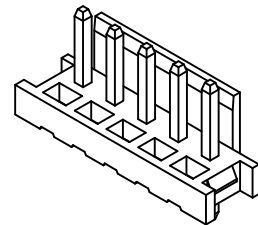
#### Reference Informations:

- \*Material: Pin: Brass/Tin over Nickel  
Insulator: Nylon 66, UL94V-0
- \*Mates with CJT A3963HB-XP series Housing
- \*Color: White

#### Ordering Information:

A3963WVB-XP - \*\*\* - \*\*  
1 2 3

- Part No.
- Material:  
(blank): Nylon 66, UL94V-0  
GWT: Nylon 66, UL94V-0, GWT 750°C
- Finish:  
(blank): Tin over Nickel  
G: Gold over Nickel



#### Ordering Information & Dimensions:

| PART NO. | Dimensions |       |
|----------|------------|-------|
|          | A          | B     |
| 2P       | 3.96       | 11.92 |
| 3P       | 7.92       | 15.88 |
| 4P       | 11.88      | 19.84 |
| 5P       | 15.84      | 23.80 |
| 6P       | 19.80      | 27.76 |
| 7P       | 23.76      | 31.72 |
| 8P       | 27.72      | 35.68 |
| 9P       | 31.68      | 39.64 |
| 10P      | 35.64      | 43.60 |
| 11P      | 39.60      | 47.56 |
| 12P      | 43.56      | 51.52 |
| 13P      | 47.52      | 55.48 |
| 14P      | 51.48      | 59.44 |
| 15P      | 55.44      | 63.40 |

Unit: mm



### A3963WRB-XP

3.96mm pitch 90° Wafer

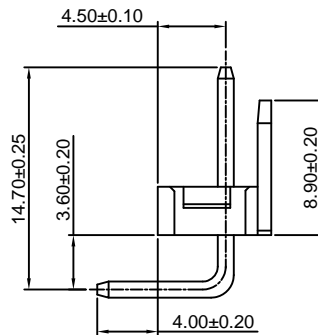
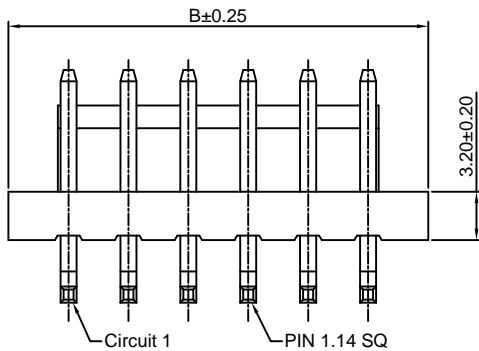
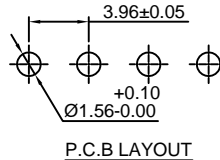
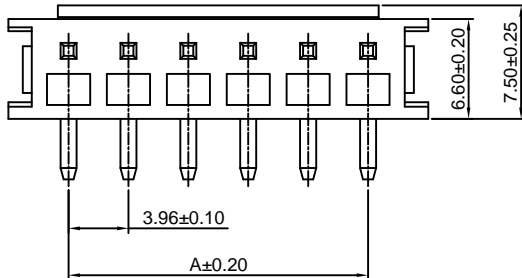
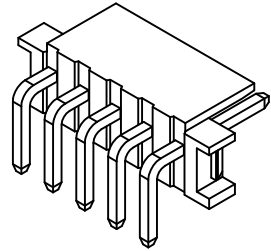
#### Reference Informations:

- \*Material: Pin: Brass/Tin over Nickel  
Insulator: Nylon 66, UL94V-0
- \*Mates with CJT A3963HB-XP series Housing
- \*Color: Beige

#### Ordering Information:

A3963WRB-XP - \*\*\* - \*\*  
1 2 3

- Part No.
- Material:  
(blank): Nylon 66, UL94V-0  
GWT: Nylon 66, UL94V-0, GWT 750°C
- Finish:  
(blank): Tin over Nickel  
G: Gold over Nickel



#### Ordering Information & Dimensions:

| PART NO. | Dimensions |       |
|----------|------------|-------|
|          | A          | B     |
| 2P       | 3.96       | 11.92 |
| 3P       | 7.92       | 15.88 |
| 4P       | 11.88      | 19.84 |
| 5P       | 15.84      | 23.80 |
| 6P       | 19.80      | 27.76 |
| 7P       | 23.76      | 31.72 |
| 8P       | 27.72      | 35.68 |
| 9P       | 31.68      | 39.64 |
| 10P      | 35.64      | 43.60 |
| 11P      | 39.60      | 47.56 |
| 12P      | 43.56      | 51.52 |
| 13P      | 47.52      | 55.48 |
| 14P      | 51.48      | 59.44 |
| 15P      | 55.44      | 63.40 |

Unit: mm

### A3963WVD-F-XP

3.96mm pitch 180° Wafer

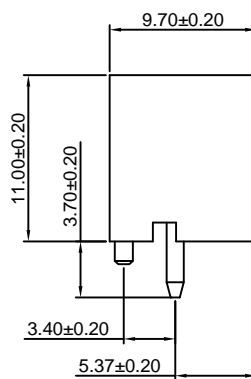
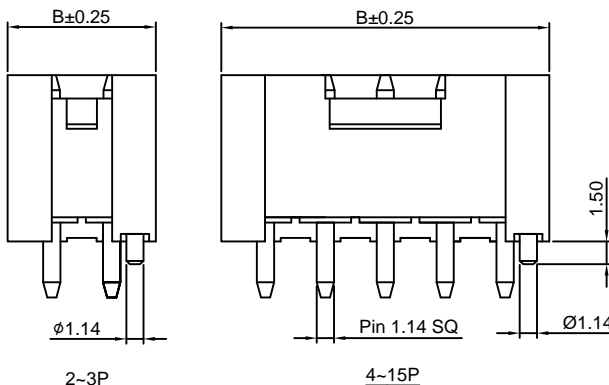
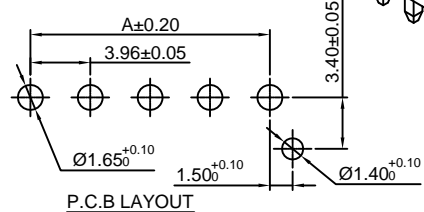
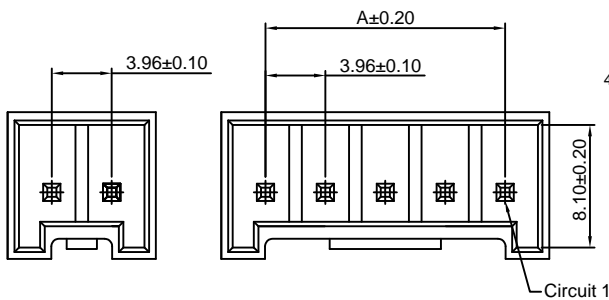
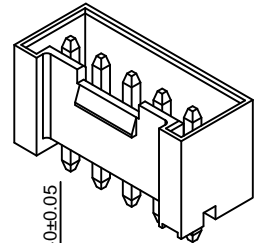
#### Reference Informations:

- \*Material: Pin: Brass/Tin over Nickel  
Insulator: PBT+30%GF, UL94V-0
- \*Mates with CJT A3963H, HA-XP series Housing
- \*Color: White

#### Ordering Information:

A3963WVD-F-XP - \*\*\* - \*\* - \*\*  
1 2 3 4

- Part No.
- Material:  
(blank): PBT+30%GF, UL94V-0  
GWT: PBT, UL94V-0, GWT 750°C
- Color:  
(Blank): White  
BK: Black RD: Red  
BL: Blue GN: Green  
OR: Orange YL: Yellow  
PK: Pink GY: Gray
- Finish:  
(blank): Tin over Nickel  
G: Gold over Nickel



#### Ordering Information & Dimensions:

| PART NO. | Dimensions |       |
|----------|------------|-------|
|          | A          | B     |
| 2P       | 3.96       | 9.80  |
| 3P       | 7.92       | 13.76 |
| 4P       | 11.88      | 17.72 |
| 5P       | 15.84      | 21.68 |
| 6P       | 19.80      | 25.64 |
| 7P       | 23.76      | 29.60 |
| 8P       | 27.72      | 33.56 |
| 9P       | 31.68      | 37.52 |
| 10P      | 35.64      | 41.48 |
| 11P      | 39.60      | 45.44 |
| 12P      | 43.56      | 49.40 |
| 13P      | 47.52      | 53.36 |
| 14P      | 51.48      | 57.32 |
| 15P      | 55.44      | 61.28 |

Unit: mm

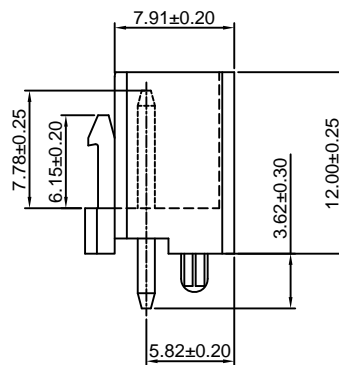
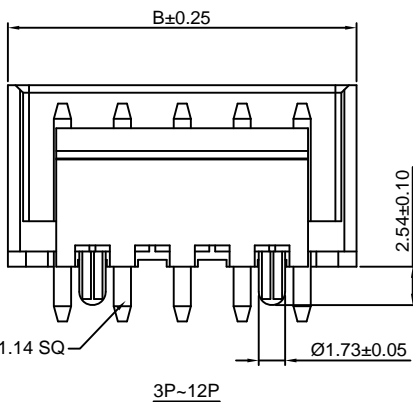
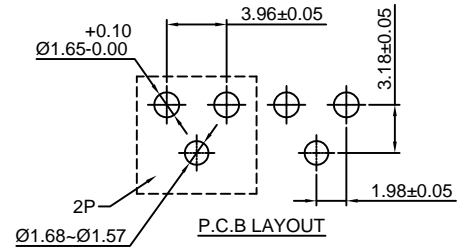
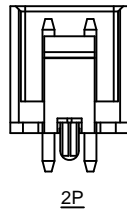
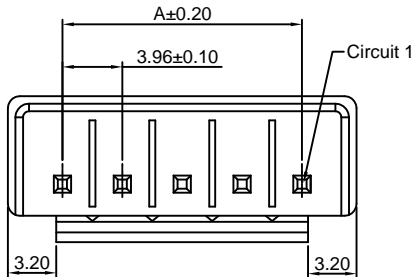
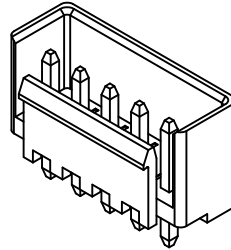


### A3963WVD-F1-XP

3.96mm pitch 180° Wafer

#### Reference Informations:

- \*Material: Pin: Brass/Tin over Nickel  
Insulator: PBT, UL94V-0
- \*Mates with CJT A3963H, HA-XP series Housing
- \*Color: White



#### Ordering Information & Dimensions:

| PART NO. | Dimensions |       |
|----------|------------|-------|
|          | A          | B     |
| 2P       | 3.96       | 11.17 |
| 3P       | 7.92       | 15.13 |
| 4P       | 11.88      | 19.09 |
| 5P       | 15.84      | 23.05 |
| 6P       | 19.80      | 27.01 |
| 7P       | 23.76      | 30.97 |
| 8P       | 27.72      | 34.93 |
| 9P       | 31.68      | 38.89 |
| 10P      | 35.64      | 42.85 |
| 11P      | 39.60      | 46.81 |
| 12P      | 43.56      | 50.77 |

Unit: mm

### A3963WVD-FT-XP

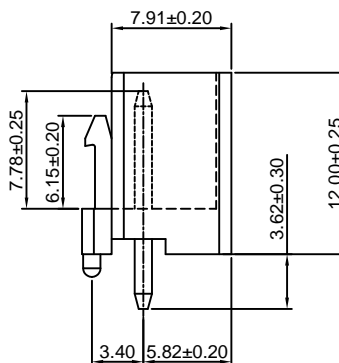
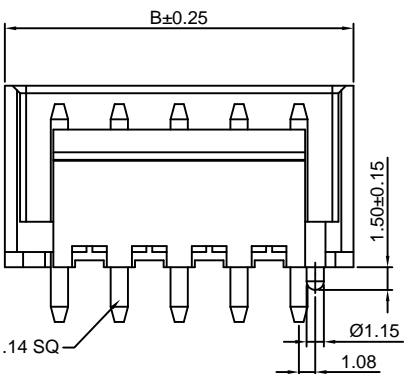
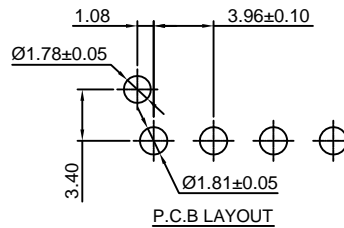
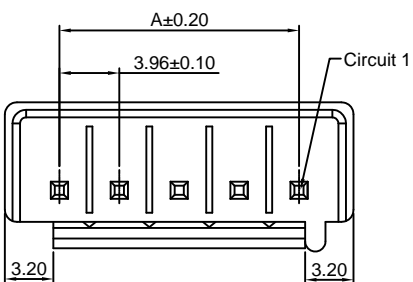
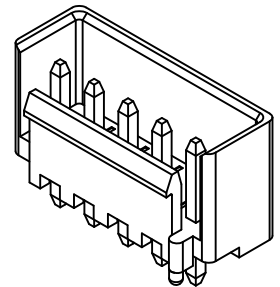
3.96mm pitch 180° Wafer

#### Reference Informations:

- \*Material: Pin: Brass/Tin over Nickel  
Insulator: PBT, UL94V-0
- \*Mates with CJT A3963H, HA-XP series Housing
- \*Color: White

Ordering Information:  
A3963WVD-FT-XP - \*\*  
1 2

- 1.Part No.
- 2.Color:  
(blank):White  
BK:Black



#### Ordering Information & Dimensions:

| PART NO. | Dimensions |       |
|----------|------------|-------|
|          | A          | B     |
| 2P       | 3.96       | 11.17 |
| 3P       | 7.92       | 15.13 |
| 4P       | 11.88      | 19.09 |
| 5P       | 15.84      | 23.05 |
| 6P       | 19.80      | 27.01 |
| 7P       | 23.76      | 30.97 |
| 8P       | 27.72      | 34.93 |
| 9P       | 31.68      | 38.89 |
| 10P      | 35.64      | 42.85 |
| 11P      | 39.60      | 46.81 |
| 12P      | 43.56      | 50.77 |

Unit: mm

### A3963WRD-XP

3.96mm pitch 90° Wafer

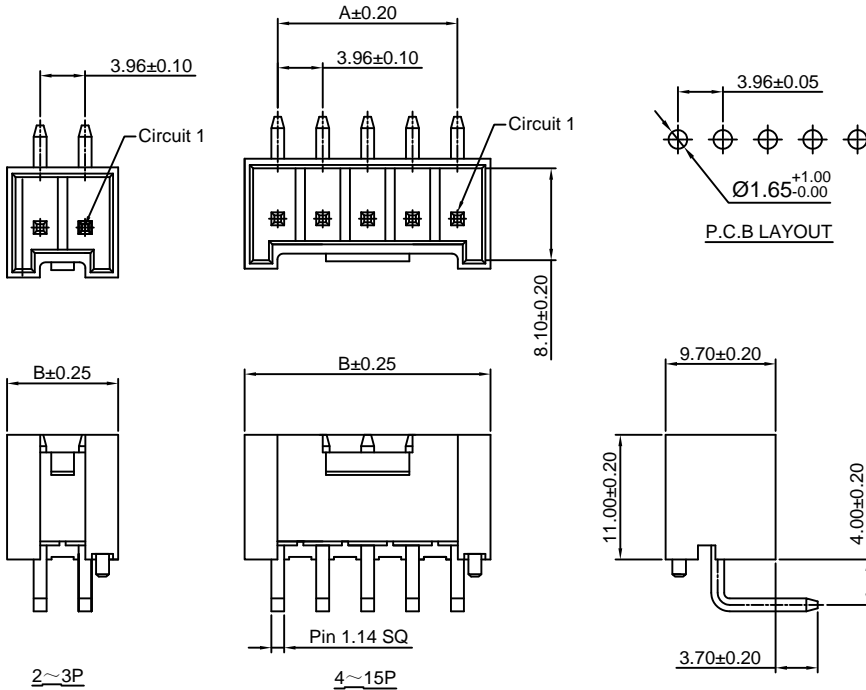
#### Reference Informations:

- \*Material: Pin: Brass/Tin over Nickel  
Insulator: PBT+30%GF, UL94V-0
- \*Mates with CJT A3963H, HA-XP series Housing
- \*Color: White

#### Ordering Information:

A3963WRD-XP - \*\*\* - \*\*  
1                      2                      3

1. Part No.
2. Material:  
(blank): PBT+30%GF, UL94V-0  
GWT: PBT, UL94V-0, GWT 750°C
3. Finish:  
(blank): Tin over Nickel  
G: Gold over Nickel



#### Ordering Information & Dimensions:

| PART NO. | Dimensions |       |
|----------|------------|-------|
|          | A          | B     |
| 2P       | 3.96       | 9.80  |
| 3P       | 7.92       | 13.76 |
| 4P       | 11.88      | 17.72 |
| 5P       | 15.84      | 21.68 |
| 6P       | 19.80      | 25.64 |
| 7P       | 23.76      | 29.60 |
| 8P       | 27.72      | 33.56 |
| 9P       | 31.68      | 37.52 |
| 10P      | 35.64      | 41.48 |
| 11P      | 39.60      | 45.44 |
| 12P      | 43.56      | 49.40 |
| 13P      | 47.52      | 53.36 |
| 14P      | 51.48      | 57.32 |
| 15P      | 55.44      | 61.28 |

Unit: mm

### A3963WRD-XP-A

3.96mm pitch 90° Wafer

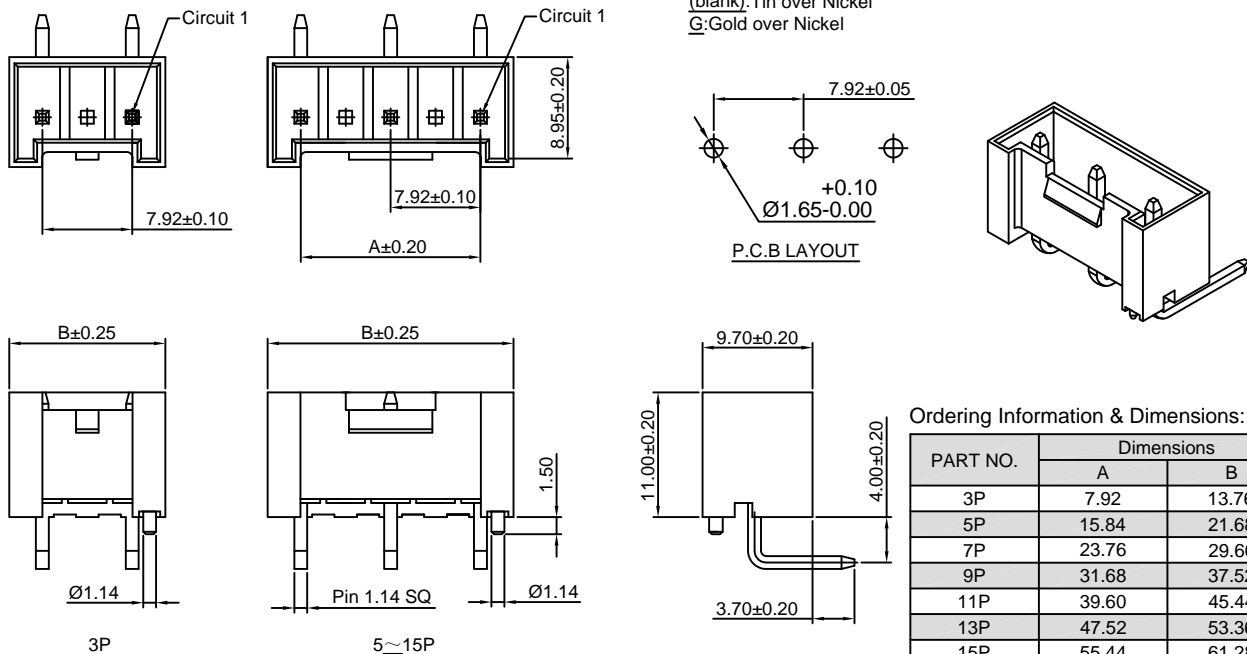
#### Reference Informations:

- \*Material: Pin: Brass/Tin over Nickel  
Insulator: PBT+30%GF, UL94V-0
- \*Mates with CJT A3963H, HA-XP series Housing
- \*Color: White

#### Ordering Information:

A3963WRD-XP-A - \*\*\* - \*\*  
1                      2                      3

1. Part No.
2. Material:  
(blank): PBT+30%GF, UL94V-0  
GWT: PBT, UL94V-0, GWT 750°C
3. Finish:  
(blank): Tin over Nickel  
G: Gold over Nickel



#### Ordering Information & Dimensions:

| PART NO. | Dimensions |       |
|----------|------------|-------|
|          | A          | B     |
| 3P       | 7.92       | 13.76 |
| 5P       | 15.84      | 21.68 |
| 7P       | 23.76      | 29.60 |
| 9P       | 31.68      | 37.52 |
| 11P      | 39.60      | 45.44 |
| 13P      | 47.52      | 53.36 |
| 15P      | 55.44      | 61.28 |

### A3963WVD-S-XP

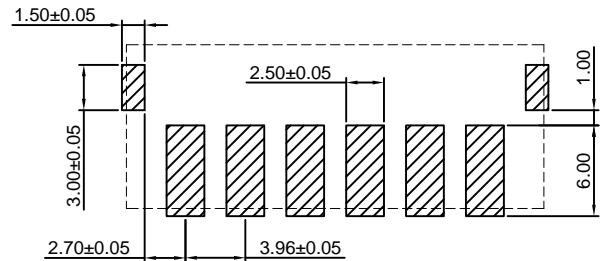
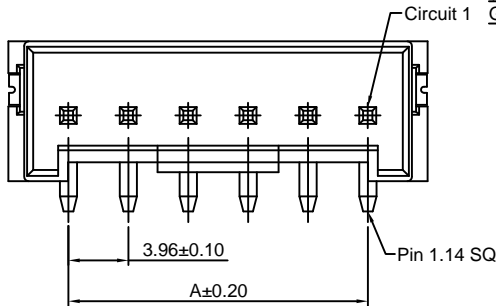
3.96mm pitch 180° Wafer - SMT TYPE

#### Reference Informations:

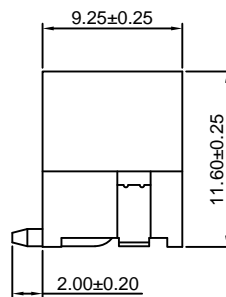
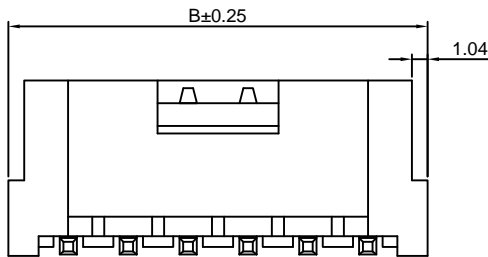
- \*Material: Pin: Phosphor Bronze/Tin over Nickel  
Insulator: Nylon 9T, UL94V-0
- \*Mates with CJT A3963H, HA-XP series Housing
- \*Color: Ivory

#### Ordering Information:

- A3963WVD-S-XP - \*\*\* - \*\*  
 1                      2                      3
1. Part No.
  2. Material:  
(blank): Nylon 9T, UL94V-0  
GWT: Nylon 9T, UL94V-0, GWT 750°C
  3. Finish:  
(blank): Tin over Nickel  
G: Gold over Nickel



P.C.B LAYOUT



#### Ordering Information & Dimensions:

| PART NO. | Dimensions |       |
|----------|------------|-------|
|          | A          | B     |
| 2P       | 3.96       | 11.88 |
| 3P       | 7.92       | 15.84 |
| 4P       | 11.88      | 19.80 |
| 5P       | 15.84      | 23.76 |
| 6P       | 19.80      | 27.72 |
| 7P       | 23.76      | 31.68 |
| 8P       | 27.72      | 35.64 |
| 9P       | 31.68      | 39.60 |
| 10P      | 35.64      | 43.56 |

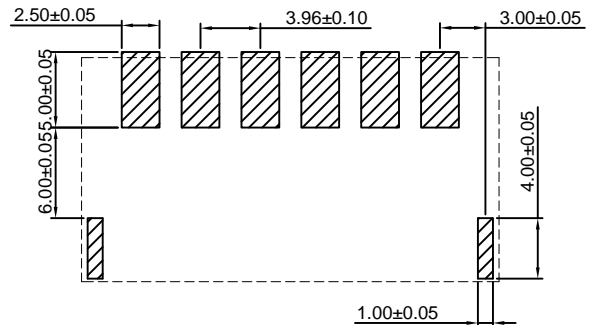
Unit: mm

### A3963WRD-S-XP

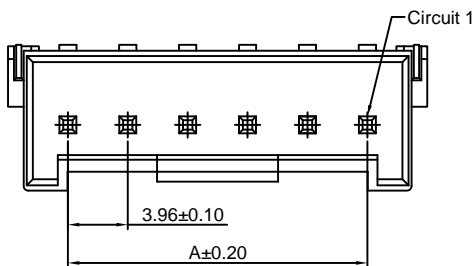
3.96mm pitch 90° Wafer - SMT TYPE

#### Reference Informations:

- \*Material: Pin: Phosphor Bronze/Tin over Nickel  
Insulator: Nylon 9T, UL94V-0
- \*Mates with CJT A3963H, HA-XP series Housing
- \*Color: Ivory

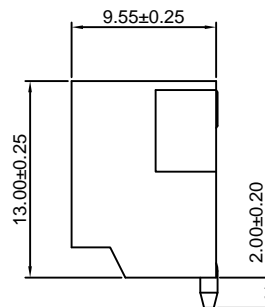
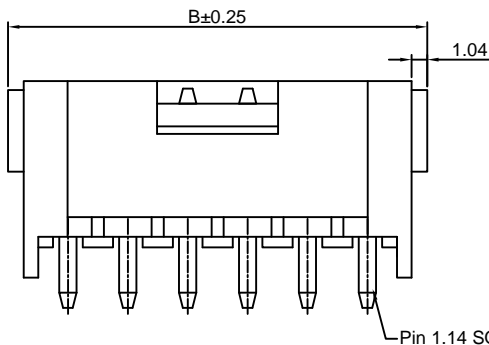


P.C.B LAYOUT



#### Ordering Information:

- A3963WRD-S-XP - \*\*\* - \*\*  
 1                      2                      3
1. Part No.
  2. Material:  
(blank): Nylon 9T, UL94V-0  
GWT: Nylon 9T, UL94V-0, GWT 750°C
  3. Finish:  
(blank): Tin over Nickel  
G: Gold over Nickel



#### Ordering Information & Dimensions:

| PART NO. | Dimensions |       |
|----------|------------|-------|
|          | A          | B     |
| 2P       | 3.96       | 11.88 |
| 3P       | 7.92       | 15.84 |
| 4P       | 11.88      | 19.80 |
| 5P       | 15.84      | 23.76 |
| 6P       | 19.80      | 27.72 |
| 7P       | 23.76      | 31.68 |
| 8P       | 27.72      | 35.64 |
| 9P       | 31.68      | 39.60 |
| 10P      | 35.64      | 43.56 |

Unit: mm

### A3963WV-XP-A

7.92mm pitch 180° Wafer

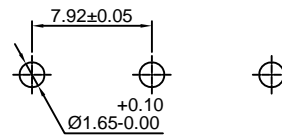
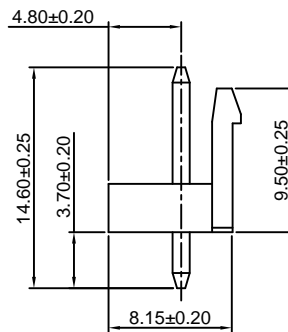
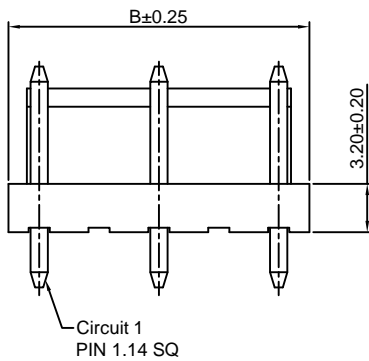
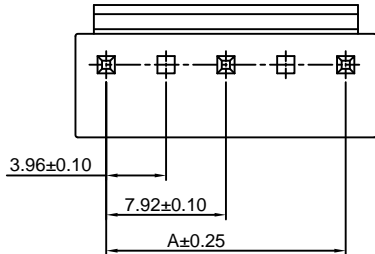
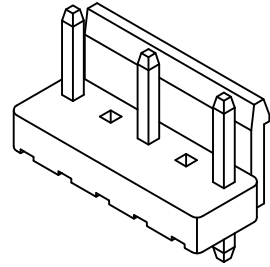
#### Reference Informations:

- \*Material: Pin: Brass/Tin over Nickel  
Insulator: Nylon 66, UL94V-0
- \*Mates with CJT A3963H, HA, HC-XP, A7921H-2P series Housing
- \*Color: White

#### Ordering Information:

A3963WV-XP-A - \*\*\* - \*\* - \*\*  
1 2 3 4

1. Part No.
2. Material:  
(blank): Nylon 66, UL94V-0  
GWT: Nylon 66, UL94V-0, GWT 750°C
3. Color:  
(Blank): White  
BK: Black      RD: Red  
BL: Blue      GN: Green  
OR: Orange    YL: Yellow  
PK: Pink      GY: Gray
4. Finish:  
(blank): Tin over Nickel  
G: Gold over Nickel



P.C.B LAYOUT

#### Ordering Information & Dimensions:

| PART NO. | Dimensions |       |
|----------|------------|-------|
|          | A          | B     |
| 3P       | 7.92       | 11.88 |
| 5P       | 15.84      | 19.80 |
| 7P       | 23.76      | 27.72 |
| 9P       | 31.68      | 35.64 |
| 11P      | 39.60      | 43.56 |
| 13P      | 47.52      | 51.48 |
| 15P      | 55.44      | 59.40 |

Unit: mm

### A3963WR-XP-A

7.92mm pitch 90° Wafer

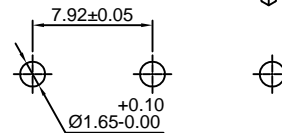
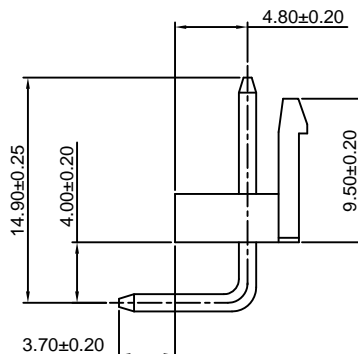
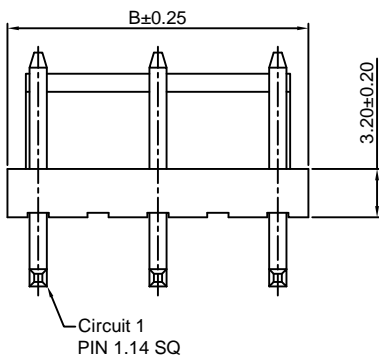
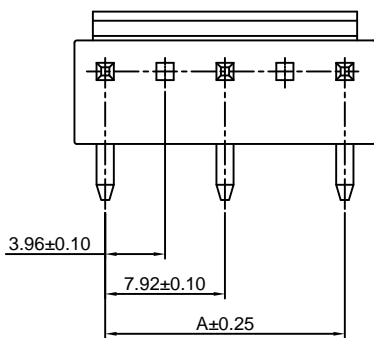
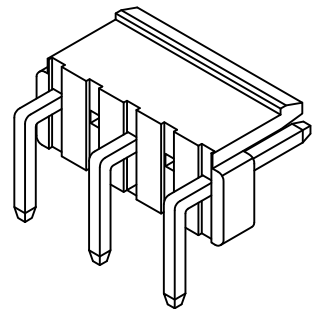
#### Reference Informations:

- \*Material: Pin: Brass/Tin over Nickel  
Insulator: Nylon 66, UL94V-0
- \*Mates with CJT A3963H, HA, HC-XP, A7921H-2P series Housing
- \*Color: White

#### Ordering Information:

A3963WR-XP-A - \*\*\* - \*\* - \*\*  
1 2 3 4

1. Part No.
2. Material:  
(blank): Nylon 66, UL94V-0  
GWT: Nylon 66, UL94V-0, GWT 750°C
3. Color:  
(Blank): White  
BK: Black      RD: Red  
BL: Blue      GN: Green  
OR: Orange    YL: Yellow  
PK: Pink      GY: Gray
4. Finish:  
(blank): Tin over Nickel  
G: Gold over Nickel



P.C.B LAYOUT

#### Ordering Information & Dimensions:

| PART NO. | Dimensions |       |
|----------|------------|-------|
|          | A          | B     |
| 3P       | 7.92       | 11.88 |
| 5P       | 15.84      | 19.80 |
| 7P       | 23.76      | 27.72 |
| 9P       | 31.68      | 35.64 |
| 11P      | 39.60      | 43.56 |
| 13P      | 47.52      | 51.48 |
| 15P      | 55.44      | 59.40 |

Unit: mm

### A3963WVB-XP-A

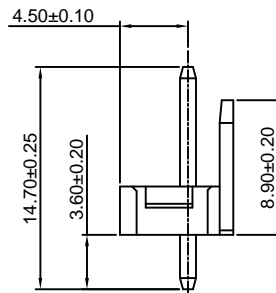
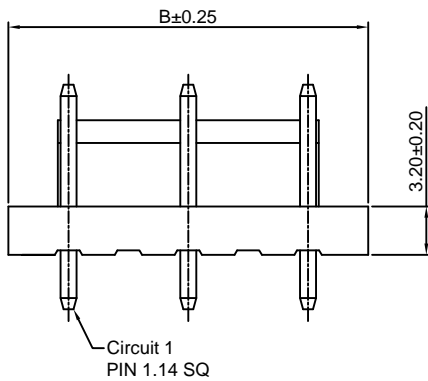
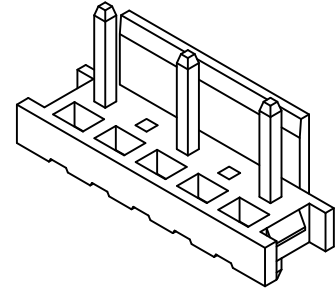
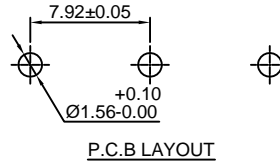
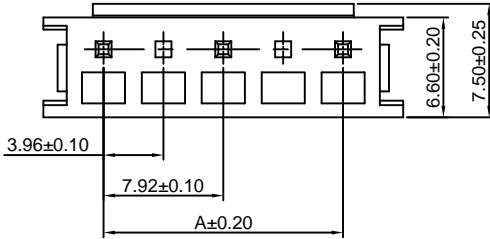
7.92mm pitch 180° Wafer

#### Reference Informations:

- \*Material: Pin: Brass/Tin over Nickel  
Insulator: Nylon 66, UL94V-0
- \*Mates with CJT A3963HB-XP series Housing
- \*Color: White

#### Ordering Information:

- A3963WVB-XP-A - <sup>\*\*\*</sup>/<sub>2</sub> - <sup>\*\*</sup>/<sub>3</sub>
1. Part No.
  2. Material:  
(blank): Nylon 66, UL94V-0  
GWT: Nylon 66, UL94V-0, GWT 750°C
  3. Finish:  
(blank): Tin over Nickel  
G: Gold over Nickel



#### Ordering Information & Dimensions:

| PART NO. | Dimensions |       |
|----------|------------|-------|
|          | A          | B     |
| 3P       | 7.92       | 15.88 |
| 5P       | 15.84      | 23.80 |
| 7P       | 23.76      | 31.72 |
| 9P       | 31.68      | 39.64 |
| 11P      | 39.60      | 47.56 |
| 13P      | 47.52      | 55.48 |
| 15P      | 55.44      | 63.40 |

Unit: mm

### A3963WRB-XP-A

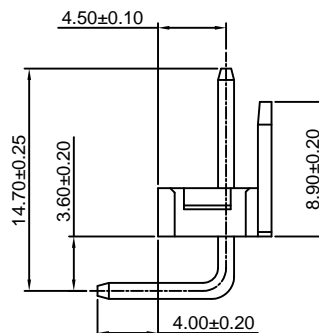
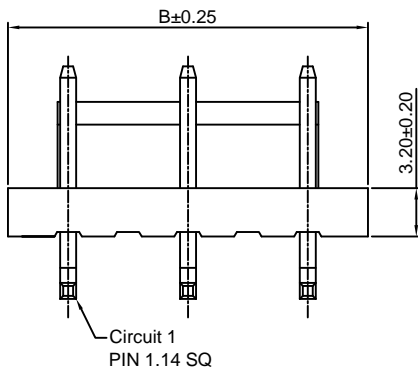
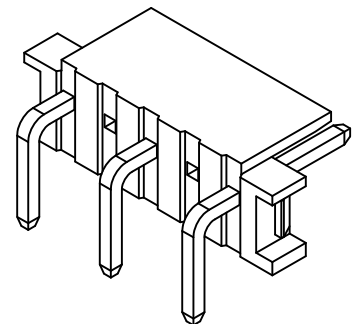
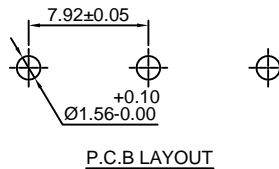
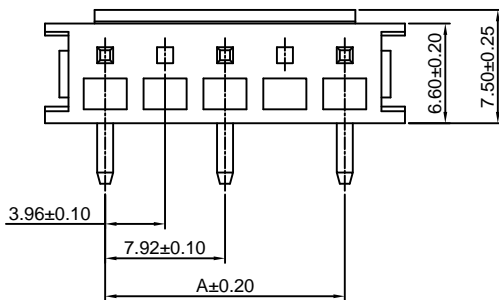
7.92mm pitch 90° Wafer

#### Reference Informations:

- \*Material: Pin: Brass/Tin over Nickel  
Insulator: Nylon 66, UL94V-0
- \*Mates with CJT A3963HB-XP series Housing
- \*Color: White

#### Ordering Information:

- A3963WRB-XP-A - <sup>\*\*\*</sup>/<sub>2</sub> - <sup>\*\*</sup>/<sub>3</sub>
1. Part No.
  2. Material:  
(blank): Nylon 66, UL94V-0  
GWT: Nylon 66, UL94V-0, GWT 750°C
  3. Finish:  
(blank): Tin over Nickel  
G: Gold over Nickel



#### Ordering Information & Dimensions:

| PART NO. | Dimensions |       |
|----------|------------|-------|
|          | A          | B     |
| 3P       | 7.92       | 15.88 |
| 5P       | 15.84      | 23.80 |
| 7P       | 23.76      | 31.72 |
| 9P       | 31.68      | 39.64 |
| 11P      | 39.60      | 47.56 |
| 13P      | 47.52      | 55.48 |
| 15P      | 55.44      | 63.40 |

Unit: mm

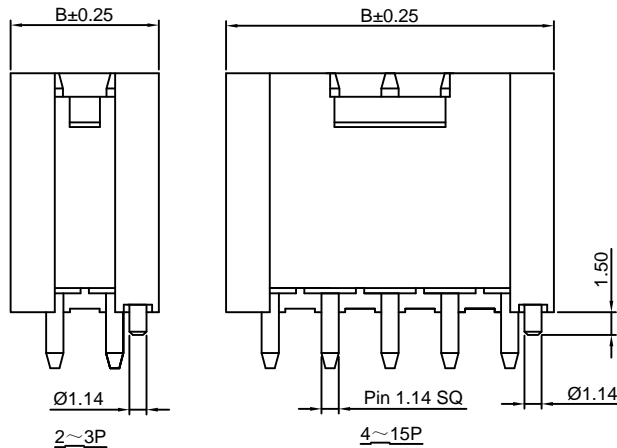
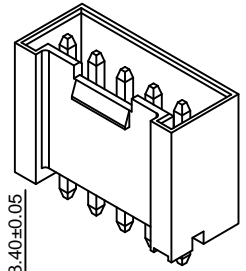
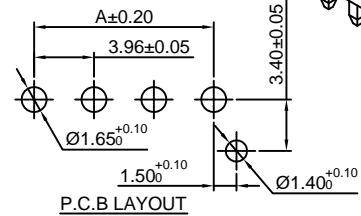
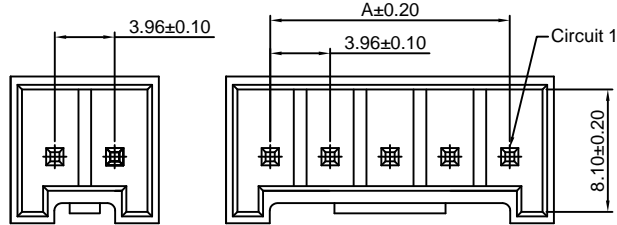
### A3963WVD-F-XP-H

3.96mm pitch 180° Wafer

#### Reference Informations:

- \*Material: Pin: Brass/Tin over Nickel  
Insulator: PBT+30%GF, UL94V-0
- \*Mates with CJT A3963H, HA-XP series Housing
- \*Color: White

- Ordering Information:  
A3963WVD-F-XP-H - <sup>\*\*\*</sup> - <sup>\*\*</sup> - <sup>\*\*</sup>
1. Part No.  
2. Material:  
(blank): PBT+30%GF, UL94V-0  
GWT: PBT, UL94V-0, GWT 750°C
3. Color:  
(Blank): White  
BK: Black  
BL: Blue  
OR: Orange  
PK: Pink  
4. Finish:  
(blank): Tin over Nickel  
G: Gold over Nickel
- RD: Red  
GN: Green  
YL: Yellow  
GY: Gray



#### Ordering Information & Dimensions:

| PART NO. | Dimensions |       |
|----------|------------|-------|
|          | A          | B     |
| 2P       | 3.96       | 9.80  |
| 3P       | 7.92       | 13.76 |
| 4P       | 11.88      | 17.72 |
| 5P       | 15.84      | 21.68 |
| 6P       | 19.80      | 25.64 |
| 7P       | 23.76      | 29.60 |
| 8P       | 27.72      | 33.56 |
| 9P       | 31.68      | 37.52 |
| 10P      | 35.64      | 41.48 |
| 11P      | 39.60      | 45.44 |
| 12P      | 43.56      | 49.40 |
| 13P      | 47.52      | 53.36 |
| 14P      | 51.48      | 57.32 |
| 15P      | 55.44      | 61.28 |

Unit: mm

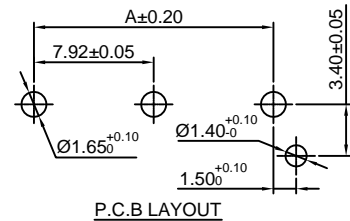
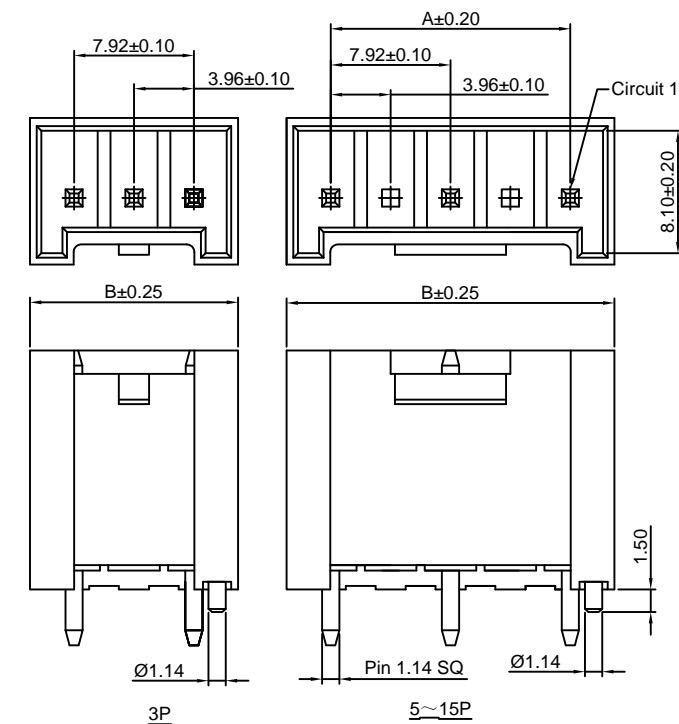
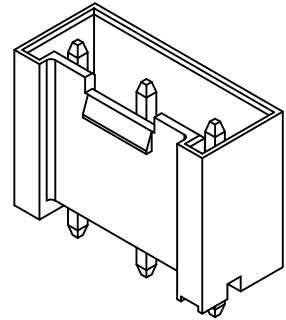
### A3963WVD-F-XP-H-A

7.92mm pitch 180° Wafer

#### Reference Informations:

- \*Material: Pin: Brass/Tin over Nickel  
Insulator: PBT+30%GF, UL94V-0
- \*Mates with CJT A3963H, HA-XP series Housing
- \*Color: White

- Ordering Information:  
A3963WVD-F-XP-H-A - <sup>\*\*\*</sup> - <sup>\*\*</sup> - <sup>\*\*</sup>
1. Part No.  
2. Material:  
(blank): PBT+30%GF, UL94V-0  
GWT: PBT, UL94V-0, GWT 750°C
3. Color:  
(Blank): White  
BK: Black  
BL: Blue  
OR: Orange  
PK: Pink  
4. Finish:  
(blank): Tin over Nickel  
G: Gold over Nickel
- RD: Red  
GN: Green  
YL: Yellow  
GY: Gray



#### Ordering Information & Dimensions:

| PART NO. | Dimensions |       |
|----------|------------|-------|
|          | A          | B     |
| 3P       | 7.92       | 13.76 |
| 5P       | 15.84      | 21.68 |
| 7P       | 23.76      | 29.60 |
| 9P       | 31.68      | 37.52 |
| 11P      | 39.60      | 45.44 |
| 13P      | 47.52      | 53.36 |
| 15P      | 55.44      | 61.28 |

Unit: mm

### A3963WVD-F-XP-A

7.92mm pitch 180° Wafer

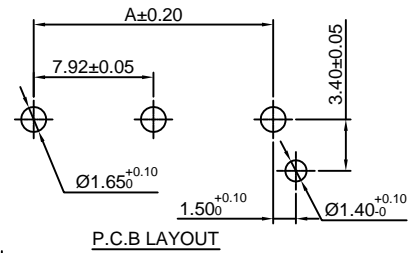
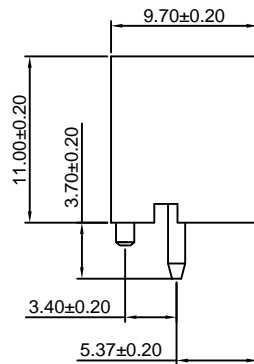
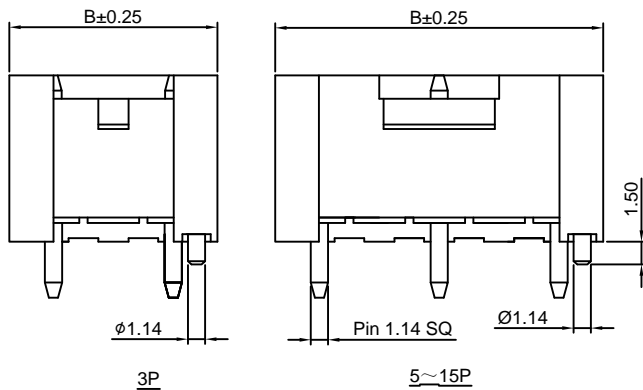
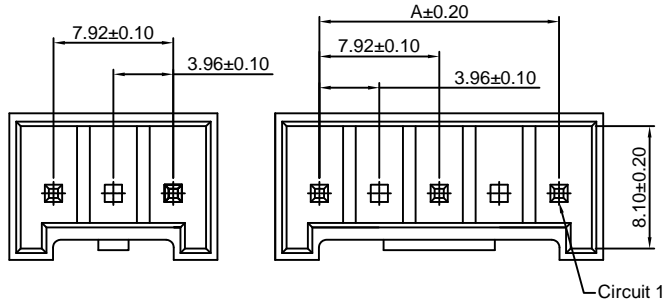
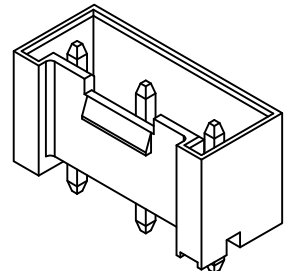
#### Reference Informations:

- \*Material: Pin: Brass/Tin over Nickel  
Insulator: PBT+30%GF, UL94V-0
- \*Mates with CJT A3963H, HA-XP series Housing
- \*Color: White

#### Ordering Information:

A3963WVD-F-XP-A - \*\*\* - \*\* - \*\*  
1 2 3 4

- Part No.
- Material:  
(blank): PBT+30%GF, UL94V-0  
GWT: PBT, UL94V-0, GWT 750°C
- Color:  
(Blank): White  
BK: Black      RD: Red  
BL: Blue      GN: Green  
OR: Orange    YL: Yellow  
PK: Pink      GY: Gray
- Finish:  
(blank): Tin over Nickel  
G: Gold over Nickel



#### Ordering Information & Dimensions:

| PART NO. | Dimensions |       |
|----------|------------|-------|
|          | A          | B     |
| 3P       | 7.92       | 13.76 |
| 5P       | 15.84      | 21.68 |
| 7P       | 23.76      | 29.60 |
| 9P       | 31.68      | 37.52 |
| 11P      | 39.60      | 45.44 |
| 13P      | 47.52      | 53.36 |
| 15P      | 55.44      | 61.28 |

Unit: mm

### A3963WVD-S-XP-A

7.92mm pitch 180° Wafer - SMT TYPE

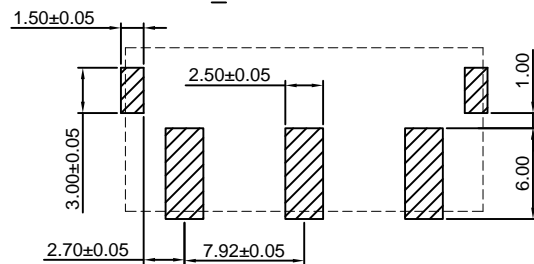
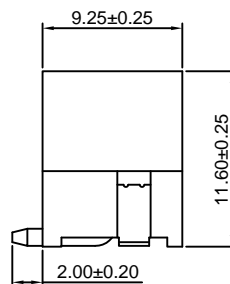
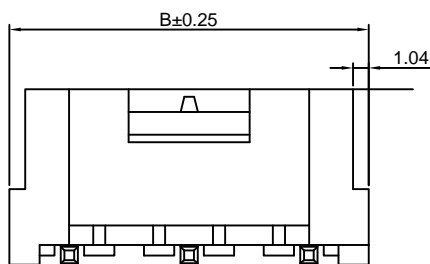
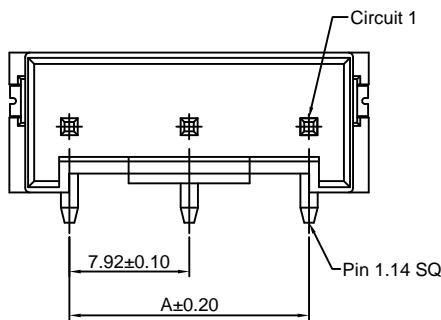
#### Reference Informations:

- \*Material: Pin: Phosphor Bronze/Tin over Nickel  
Insulator: Nylon 9T, UL94V-0
- \*Mates with CJT A3963H, HA-XP series Housing
- \*Color: Ivory

#### Ordering Information:

A3963WVD-S-XP-A - \*\*\* - \*\*  
1 2 3

- Part No.
- Material:  
(blank): Nylon 9T, UL94V-0  
GWT: Nylon 9T, UL94V-0, GWT 750°C
- Finish:  
(blank): Tin over Nickel  
G: Gold over Nickel



P.C.B LAYOUT

#### Ordering Information & Dimensions:

| PART NO. | Dimensions |       |
|----------|------------|-------|
|          | A          | B     |
| 3P       | 7.92       | 15.84 |
| 5P       | 15.84      | 23.76 |
| 7P       | 23.76      | 31.68 |
| 9P       | 31.68      | 39.60 |

Unit: mm

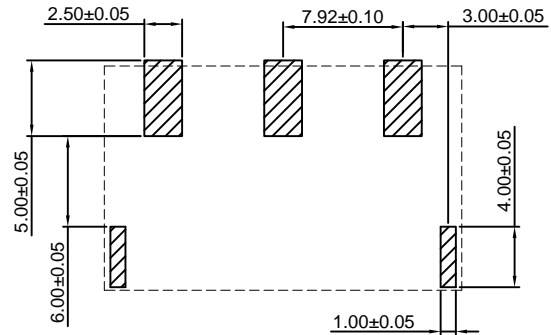
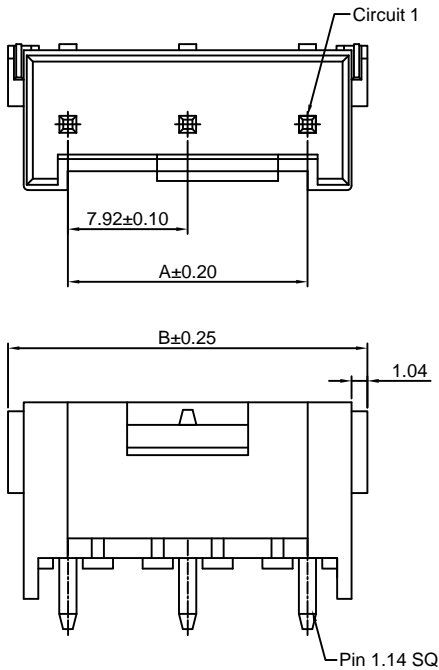


### A3963WRD-S-XP-A

7.92mm pitch 90° Wafer - SMT TYPE

#### Reference Informations:

- \*Material:Pin:Phosphor Bronze/Tin over Nickel  
Insulator:Nylon 9T,UL94V-0
- \*Mates with CJT A3963H,HA-XP series Housing
- \*Color:Ivory



#### P.C.B LAYOUT

Ordering Information:  
A3963WRD-S-XP-A - \*\*\* - \*\*  
1 2 3

- 1.Part No.
- 2.Material:  
(blank):Nylon 9T,UL94V-0  
GWT:Nylon 9T,UL94V-0,GWT 750°C
- 3.Finish:  
(blank):Tin over Nickel  
G:Gold over Nickel

#### Ordering Information & Dimensions:

| PART NO. | Dimensions |       |
|----------|------------|-------|
|          | A          | B     |
| 3P       | 7.92       | 15.84 |
| 5P       | 15.84      | 23.76 |
| 7P       | 23.76      | 31.68 |
| 9P       | 31.68      | 39.60 |

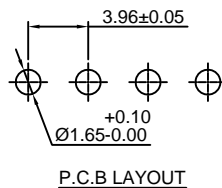
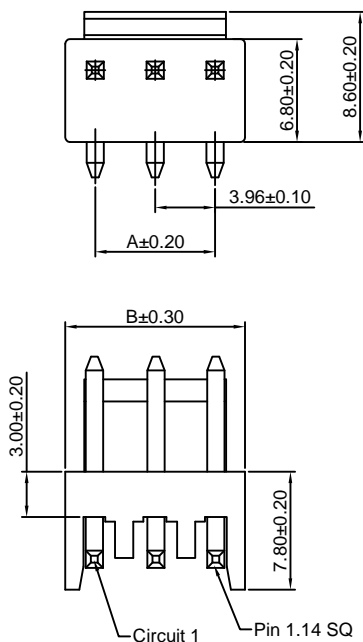
Unit: mm

### A3963WRH-XP

3.96mm pitch 90° Wafer

#### Reference Informations:

- \*Material:Pin:Brass/Tin over Nickel  
Insulator:Nylon 66,UL94V-0
- \*Mates with CJT A3963H,HA,HC-XP series Housing
- \*Color:White



Ordering Information:  
A3963WRH-XP - \*\*\* - \*\* - \*\*  
1 2 3 4

- 1.Part No.
- 2.Material:  
(blank):Nylon 66,UL94V-0  
GWT:Nylon 66,UL94V-0,GWT 750°C
- 3.Color:  
(Blank):White  
BK:Black  
RD:Red  
BL:Blue  
GN:Green  
YL:Yellow
- 4.Finish:  
(blank):Tin over Nickel  
G:Gold over Nickel

#### Ordering Information & Dimensions:

| PART NO. | Dimensions |       |
|----------|------------|-------|
|          | A          | B     |
| 2P       | 3.96       | 7.92  |
| 3P       | 7.92       | 11.88 |
| 4P       | 11.88      | 15.84 |
| 5P       | 15.84      | 19.80 |
| 6P       | 19.80      | 23.76 |
| 7P       | 23.76      | 27.72 |
| 8P       | 27.72      | 31.68 |
| 9P       | 31.68      | 35.64 |
| 10P      | 35.64      | 39.60 |
| 11P      | 39.60      | 43.56 |
| 12P      | 43.56      | 47.52 |
| 13P      | 47.52      | 51.48 |
| 14P      | 51.48      | 55.44 |
| 15P      | 55.44      | 59.40 |

## A3963WRH-XP-A

7.92mm pitch 90° Wafer

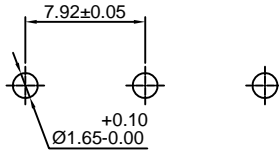
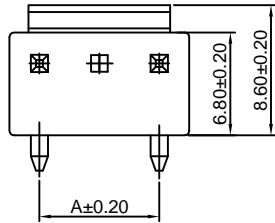
### Reference Informations:

- \*Material: Pin: Brass/Tin over Nickel  
Insulator: Nylon 66, UL94V-0
- \*Mates with CJT A3963H, HA, HC-XP series Housing
- \*Color: White

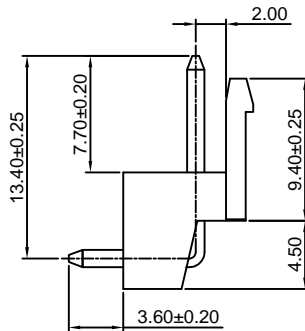
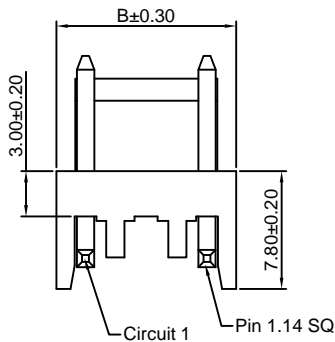
### Ordering Information:

A3963WRH-XP-A - <sup>\*\*\*</sup>/<sub>1</sub> - <sup>\*\*</sup>/<sub>2</sub> - <sup>\*\*</sup>/<sub>3</sub> - <sup>\*\*</sup>/<sub>4</sub>

1. Part No.
2. Material:  
(blank): Nylon 66, UL94V-0  
GWT: Nylon 66, UL94V-0, GWT 750°C
3. Color:  
(Blank): White  
BK: Black  
RD: Red  
BL: Blue  
GN: Green  
YL: Yellow
4. Finish:  
(blank): Tin over Nickel  
G: Gold over Nickel



P.C.B LAYOUT



### Ordering Information & Dimensions:

| PART NO. | Dimensions |       |
|----------|------------|-------|
|          | A          | B     |
| 3P       | 7.92       | 11.88 |
| 5P       | 15.84      | 19.80 |
| 7P       | 23.76      | 27.72 |
| 9P       | 31.68      | 35.64 |
| 11P      | 39.60      | 43.56 |
| 13P      | 47.52      | 51.48 |
| 15P      | 55.44      | 59.40 |

Unit: mm

## A7921WR-F-2P

7.92mm pitch 90° Wafer

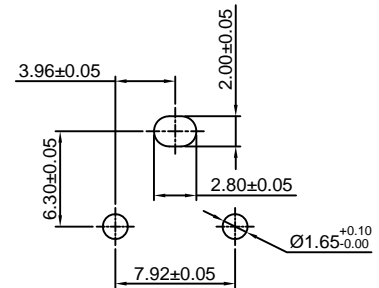
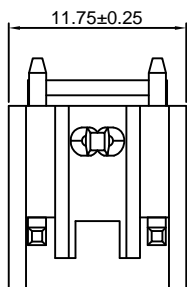
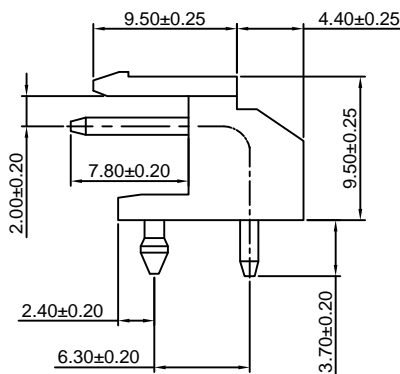
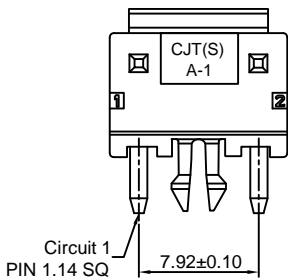
### Reference Informations:

- \*Material: Pin: Brass/Tin over Nickel  
Insulator: PBT, UL94V-0
- \*Mates with CJT A3963H-3P Housing
- \*Color: White

### Ordering Information:

A7921WR-F-2P - <sup>\*\*\*</sup>/<sub>1</sub> - <sup>\*\*</sup>/<sub>2</sub> - <sup>\*\*</sup>/<sub>3</sub>

1. Part No.
2. Material:  
(blank): PBT, UL94V-0  
GWT: PBT, UL94V-0, GWT 750°C
3. Finish:  
(blank): Tin over Nickel  
G: Gold over Nickel



P.C.B LAYOUT

Unit: mm