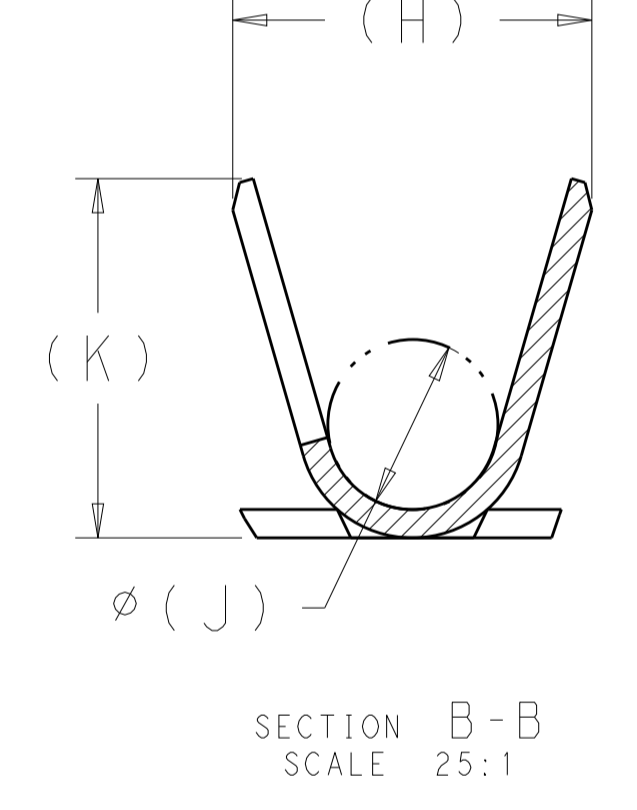
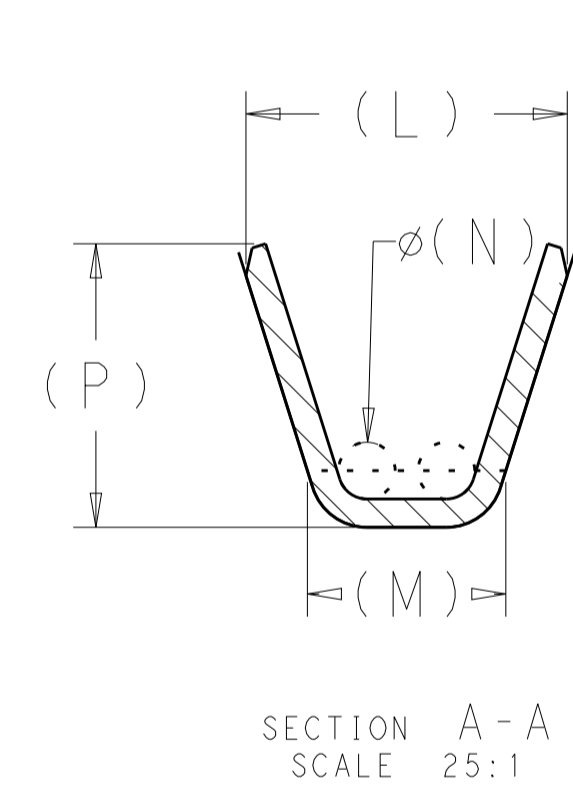
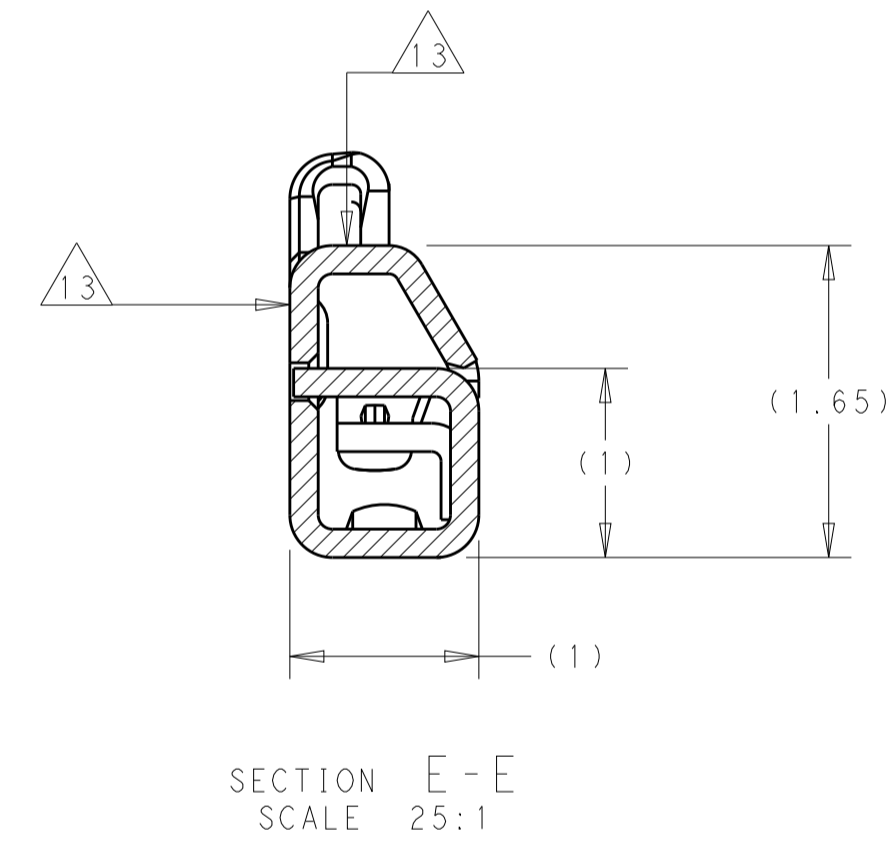
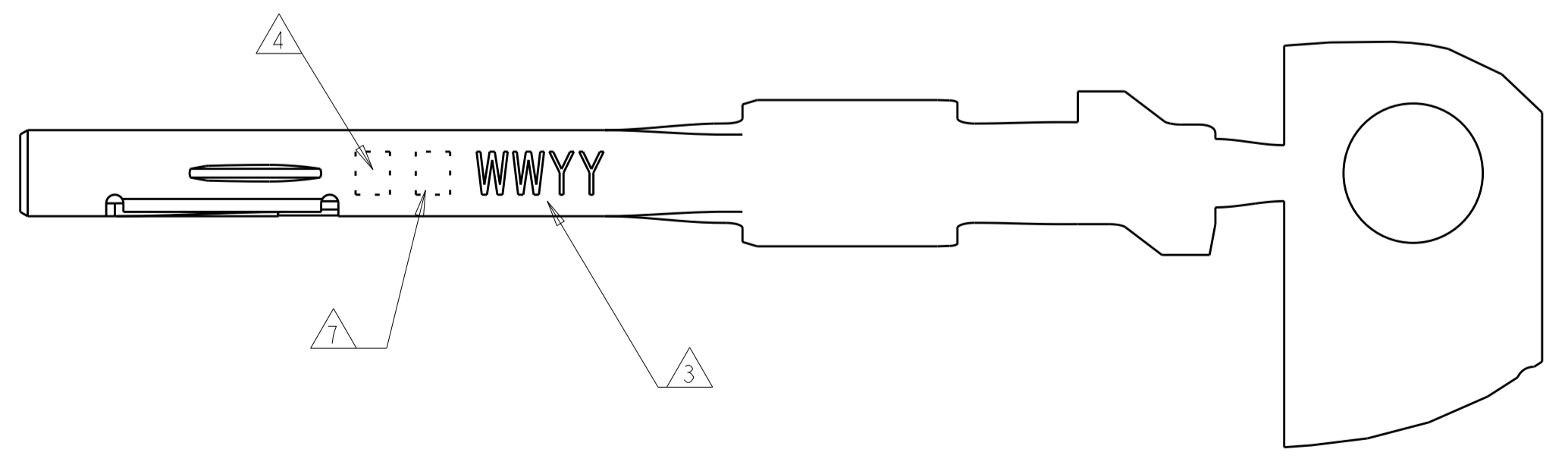
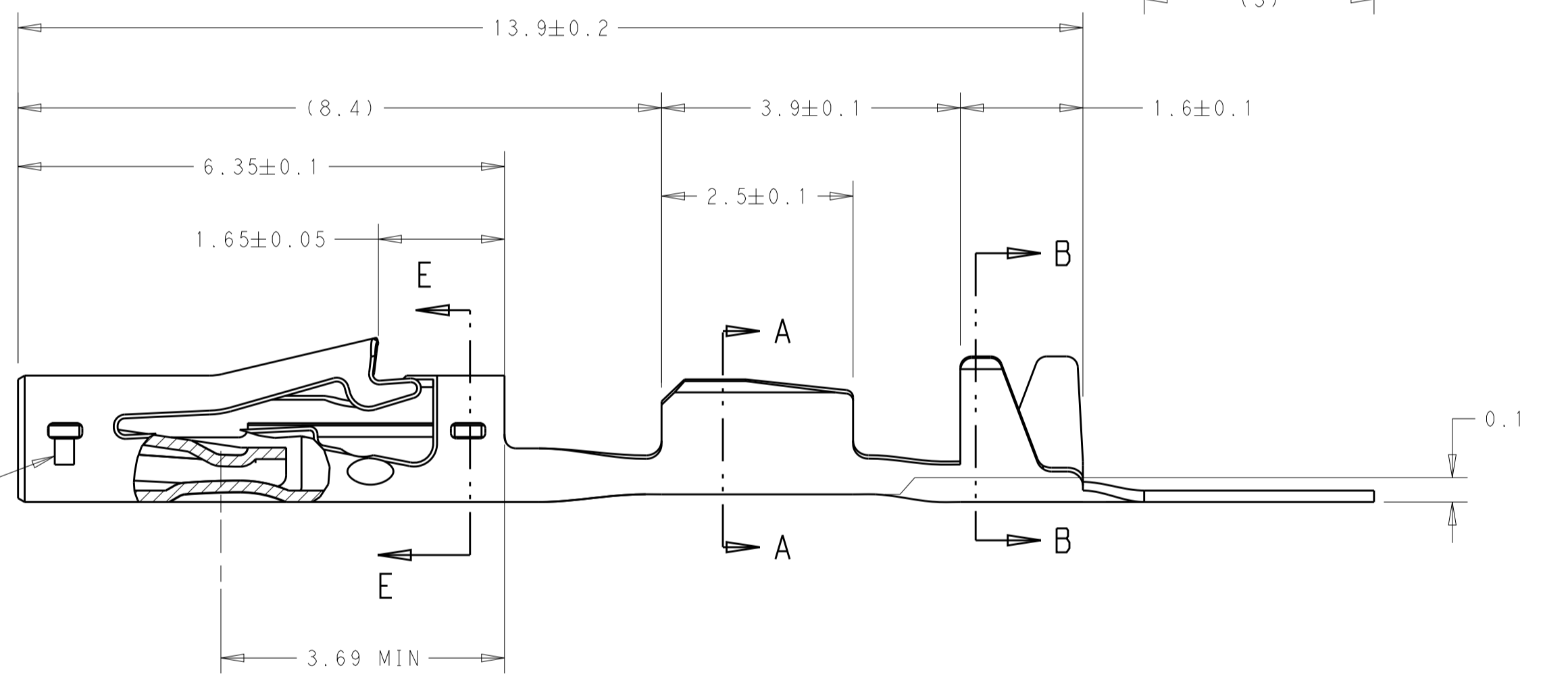
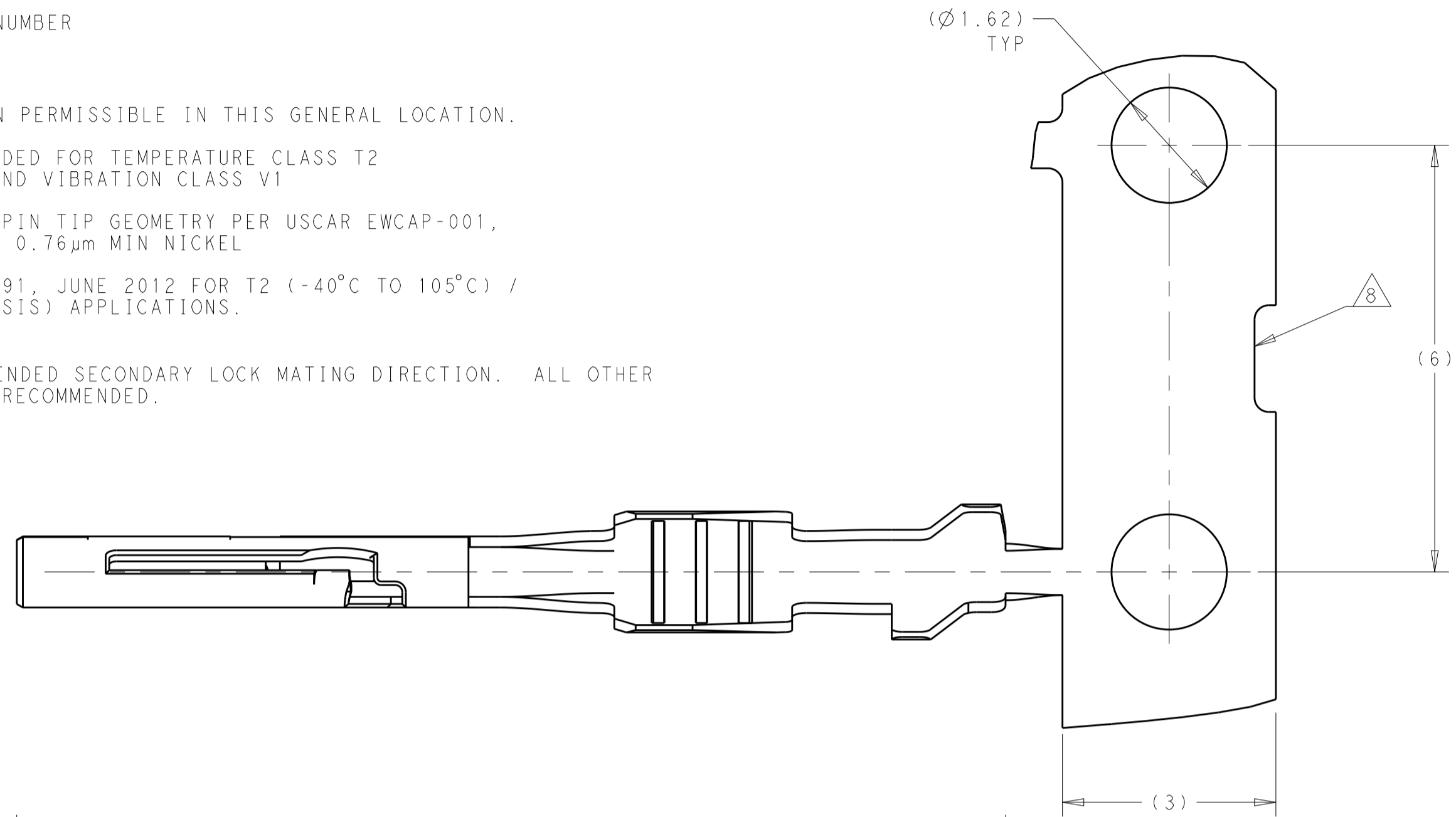
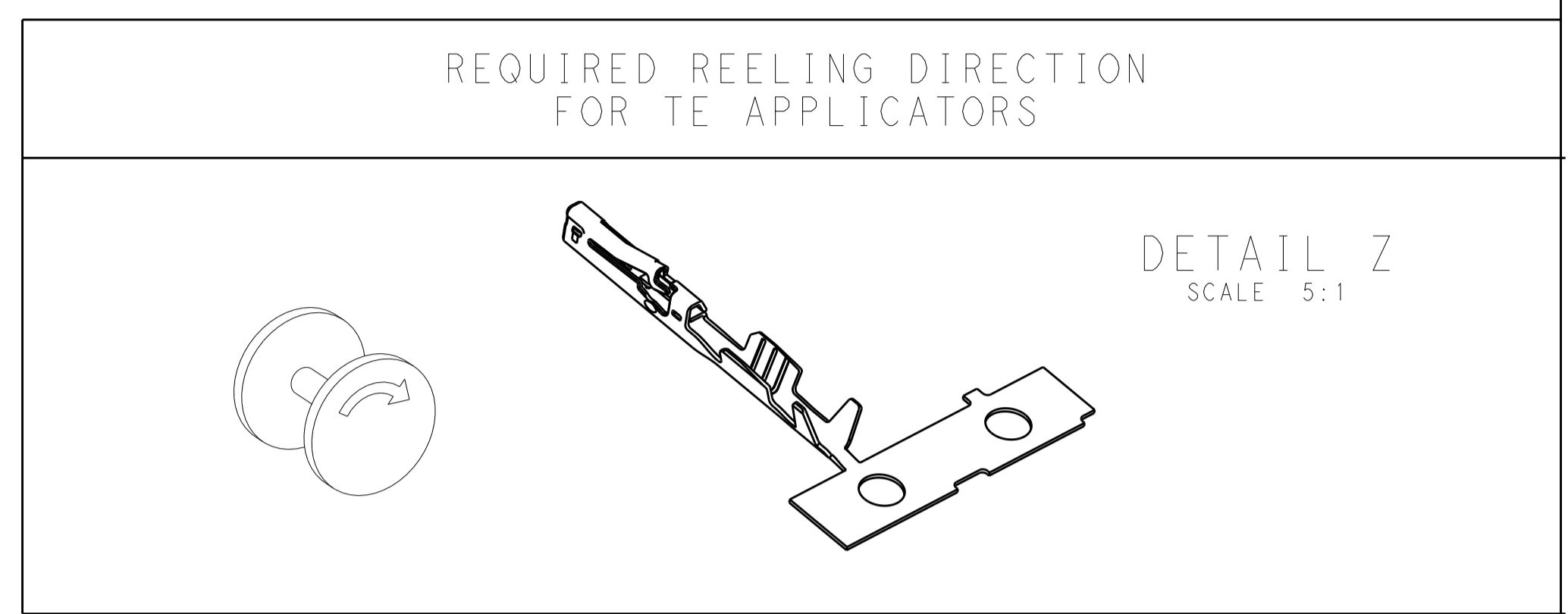
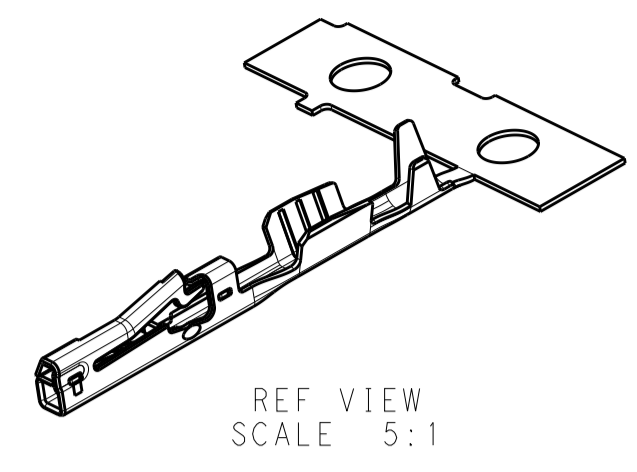


REVISIONS					
P.	LTN	DESCRIPTION	DATE	DWN	APVD
C		REV PER ECO-17-010161	12JUL2017	FK	WW
C1		REV PER ECO-17-014203	21SEP2017	FK	CR
D		REV PER ECO-18-000672	15FEB2018	HM	CR
E		REV PER ECO-19-XXXX	1MAY2019	CR	CR

- 1 MATERIAL: COPPER ALLOY, PRE-PLATED WITH 0.80µm MIN TIN
- 2. TERMINAL HAS LUBRICANT APPLIED. THIS IS A WHITISH COLORED LUBE. AMOUNT AND VISIBILITY MAY VARY.
- 3 DATE CODE (WEEK/YEAR)
- 4 BARREL SIZE ID, SEE TABLE
- 5. MAX 7 TERMINAL MISSING PER REEL PERMITTED
- 6. 3 LOOSE SPLICES PER REEL ALLOWED
- 7 DIE IDENTIFICATION NUMBER
- 8 OPTIONAL FEATURE
- 9 OPTIONAL INDENTATION PERMISSIBLE IN THIS GENERAL LOCATION.
- 10. THIS TERMINAL INTENDED FOR TEMPERATURE CLASS T2 (-40°C TO +105°C) AND VIBRATION CLASS V1
- 11. RECOMMENDED MATING PIN TIP GEOMETRY PER USCAR EWCAP-001, 0.75-1.5µm TIN OVER 0.76µm MIN NICKEL
- 12. QUALIFIED PER GMW3191, JUNE 2012 FOR T2 (-40°C TO 105°C) / V1 (ON BODY OR CHASSIS) APPLICATIONS.
- 13 ARROWS SHOW RECOMMENDED SECONDARY LOCK MATING DIRECTION. ALL OTHER DIRECTIONS ARE NOT RECOMMENDED.



N	SEE DETAIL Z	1.5	0.3	1.05	1.7	1.9	0.9	1.9	1.00 TO 1.40	0.35mm ² , 7 STRAND	2272196-2
S	SEE DETAIL Z	1.25	0.3	0.9	1.6	1.8	0.9	1.9	0.85 TO 1.05	0.13mm ² , 7 STRAND	2272196-1
MARKING 4	REELING	P	N	M	L	K	J	H	INSULATION O.D.	CONDUCTOR	PART NO

THIS DRAWING IS A CONTROLLED DOCUMENT.

DIMENSIONS:	TOLERANCES UNLESS OTHERWISE SPECIFIED:	DWN H. MOLL 20FEB2014	CHK J. MYER 25FEB2014	APVD J. MYER 25FEB2014	NAME
mm	0 PLC ±0.15	PRODUCT SPEC			RECEPTACLE, UNSEALED, GENERATION 50, LOCKING LANCE
	1 PLC ±0.15	APPLICATION SPEC			SIZE CAGE CODE DRAWING NO
	2 PLC ±0.15	114-32153			RESTRICTED TO
	3 PLC ±0.15	WEIGHT 0.08 g			A1
	4 PLC ±0.15	CUSTOMER DRAWING			SCALE 15:1 SHEET 1 OF 1 REV E

STC TE Connectivity