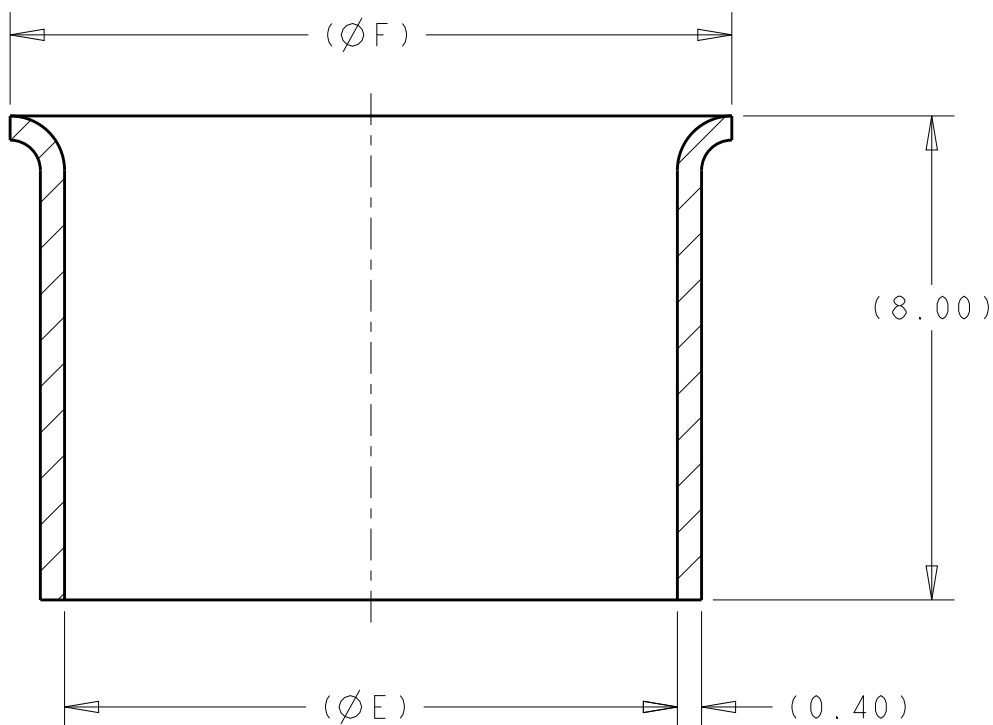


LOC HV	DIST 00	REVISIONS				
P	LTR	DESCRIPTION	DATE	DWN	APVD	
	A1	ECO-10-022743	05NOV2010	DR	DR	
	A2	ECO-11-024207	02DEC2011	DR	DR	
	A3	ECO-13-012771	08AUG2013	DR	DR	

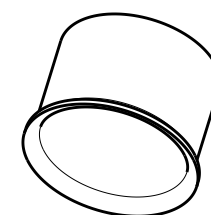


SECTION A - A

1 MATERIAL:
TYPE: COPPER ALLOY

2. FINISH:
UNDERPLATE TYPE: NICKEL
TOP PLATE TYPE: TIN

3. PARTS MUST BE FREE OF EXCESSIVE BURRS,
CRACKS, OR OTHER VISUAL IMPERFECTIONS
THAT MAY AFFECT FIT FORM OR FUNCTION



SCALE 2:1

13.93	12.13	1.26g	A	1587724-3
12.93	11.13	1.15g	A	1587724-2
11.93	10.13	1.00g	A	1587724-1
F	E	WEIGHT	REV	PART NO

20
RELEASED FOR PUBLICATION

ALL RIGHTS RESERVED.
BY TYCO ELECTRONICS CORPORATION

THIS DRAWING IS UNPUBLISHED.
COPYRIGHT 20

DIMENSIONS: mm	DWN D SIMPSON 02JUN2008	MATERIAL	FINISH	
TOLERANCES UNLESS OTHERWISE SPECIFIED:	CHK A TYLER 02JUN2008	1		
0 PLC ±	APVD J. BOLEWITZ 02JUN2008	TE Connectivity		
1 PLC ±0.15	PRODUCT SPEC	NAME OUTER FERRULE HVA280 MULTI-CORE		
2 PLC ±0.10	APPLICATION SPEC	SIZE	CAGE CODE	DRAWING NO
3 PLC ±		A 4	00779	C-1587724
4 PLC ±	WEIGHT	RESTRICTED TO		
ANGLES ±1°	SEE TABLE			
	CUSTOMER DRAWING	SCALE	SHEET	REV
		8:1	1 OF 1	A3