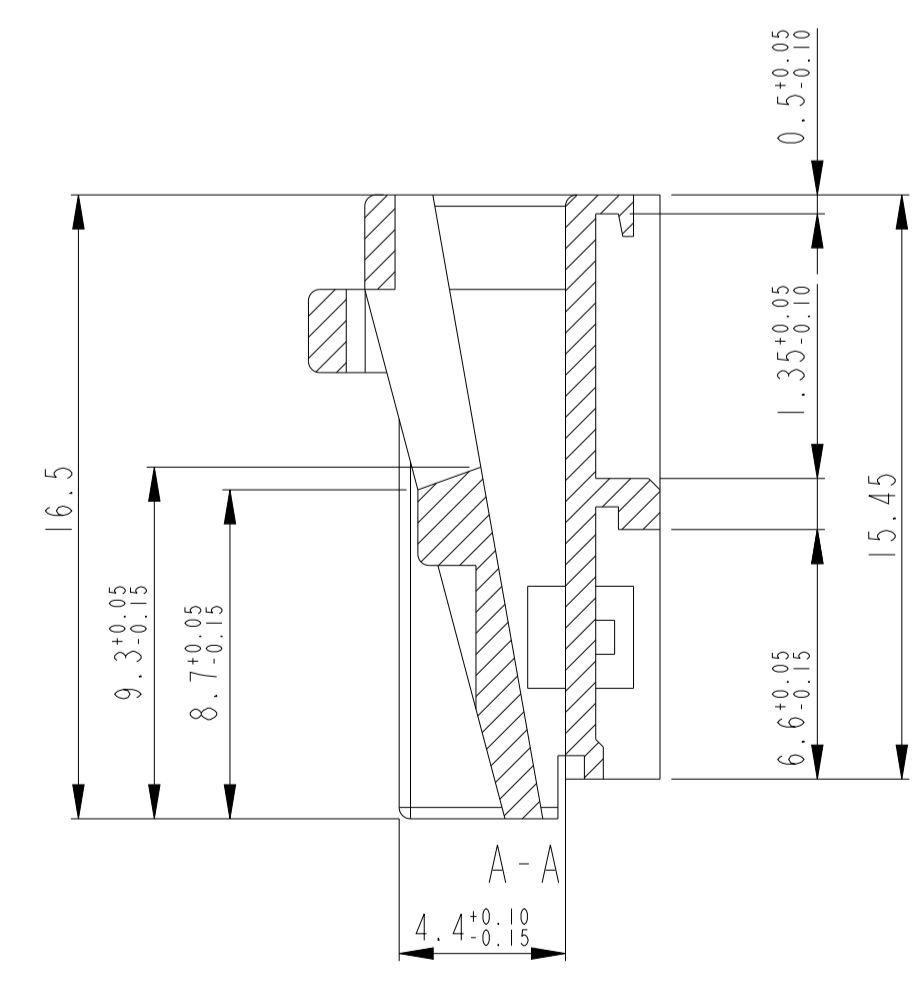
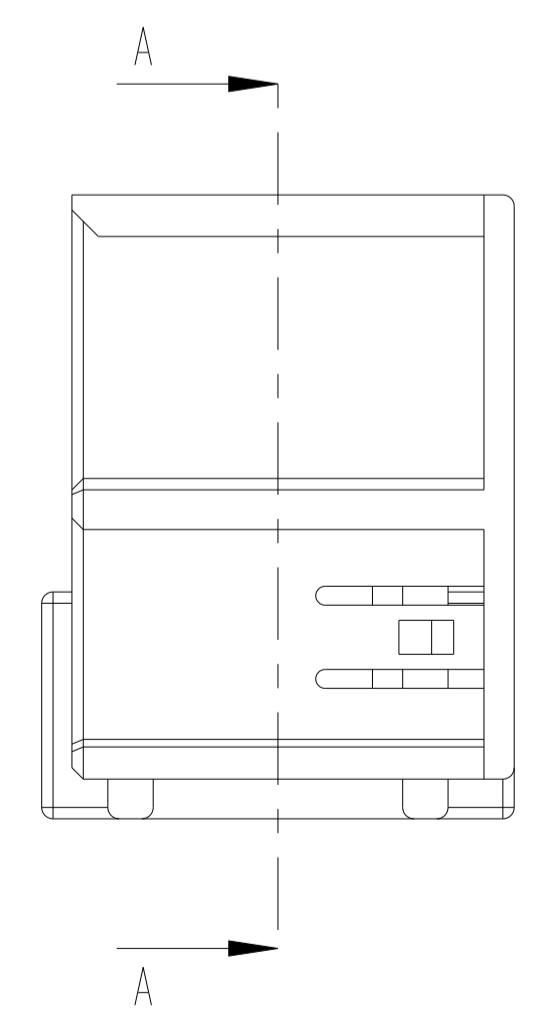
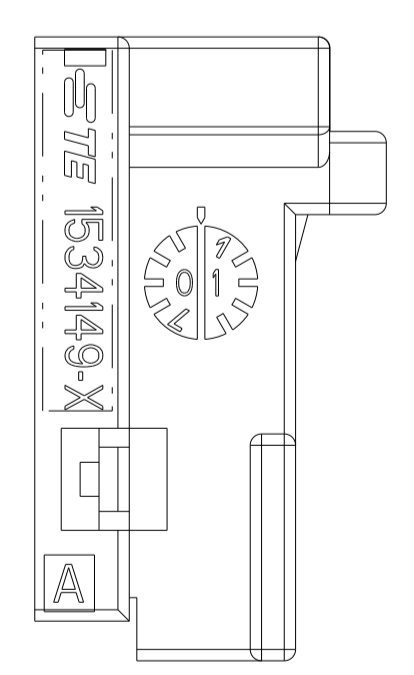
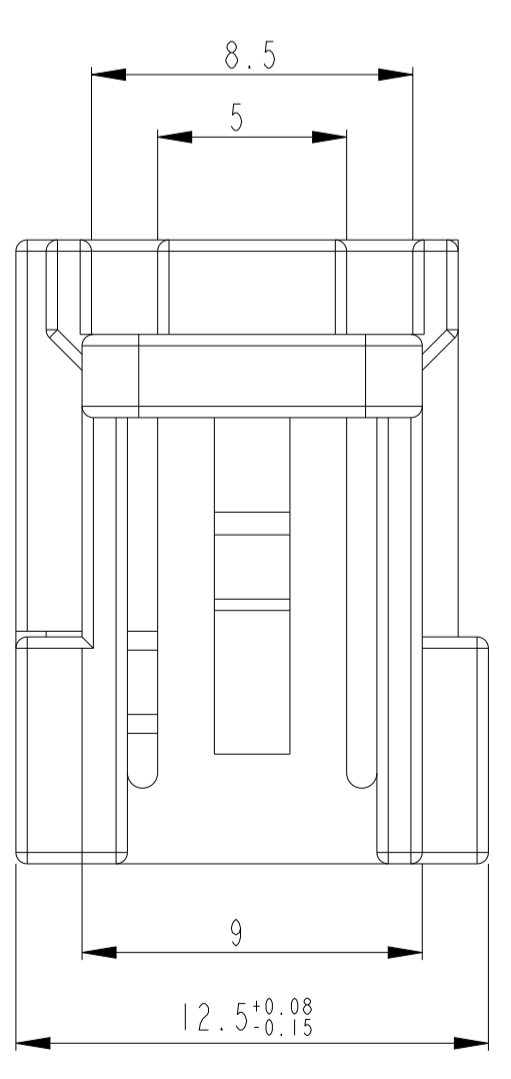
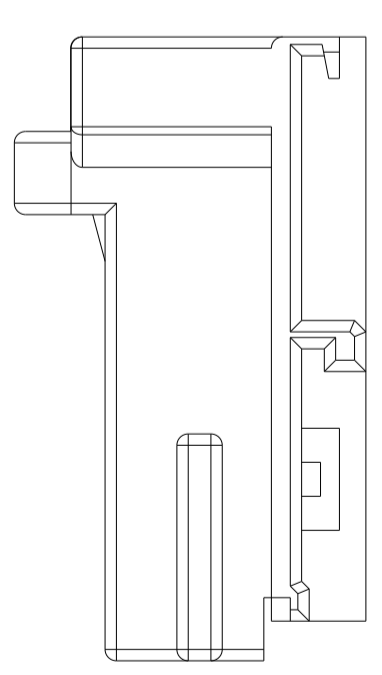
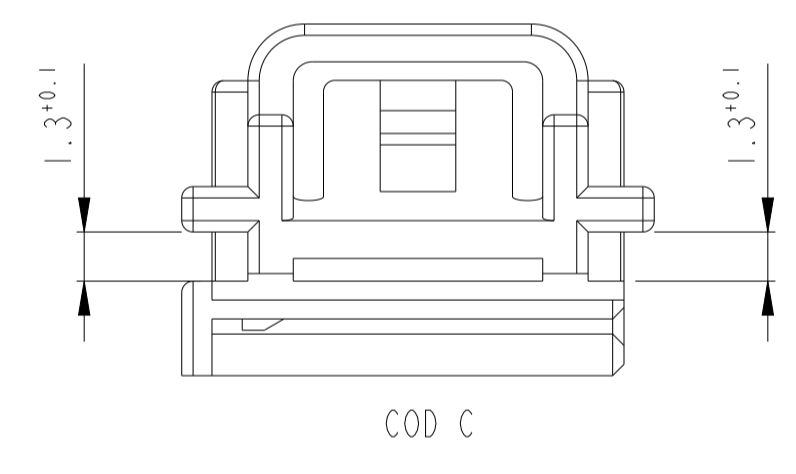
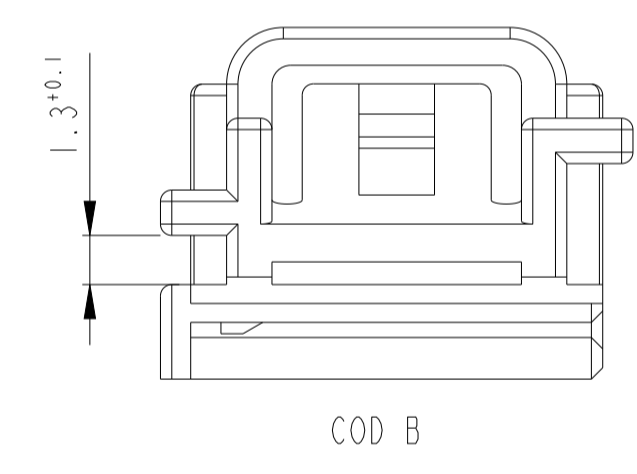
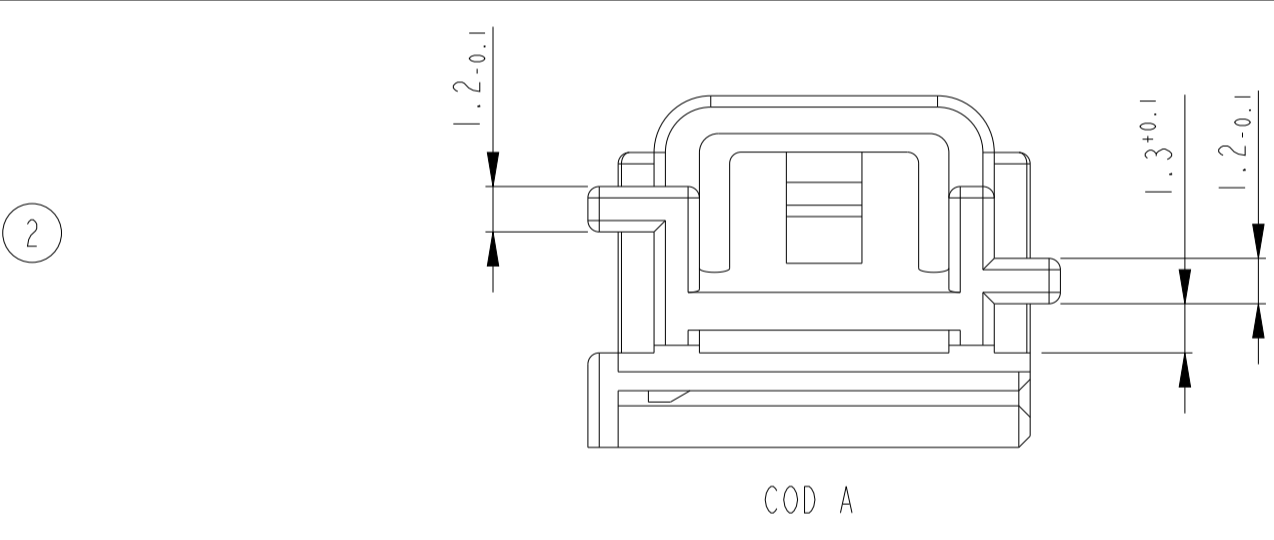
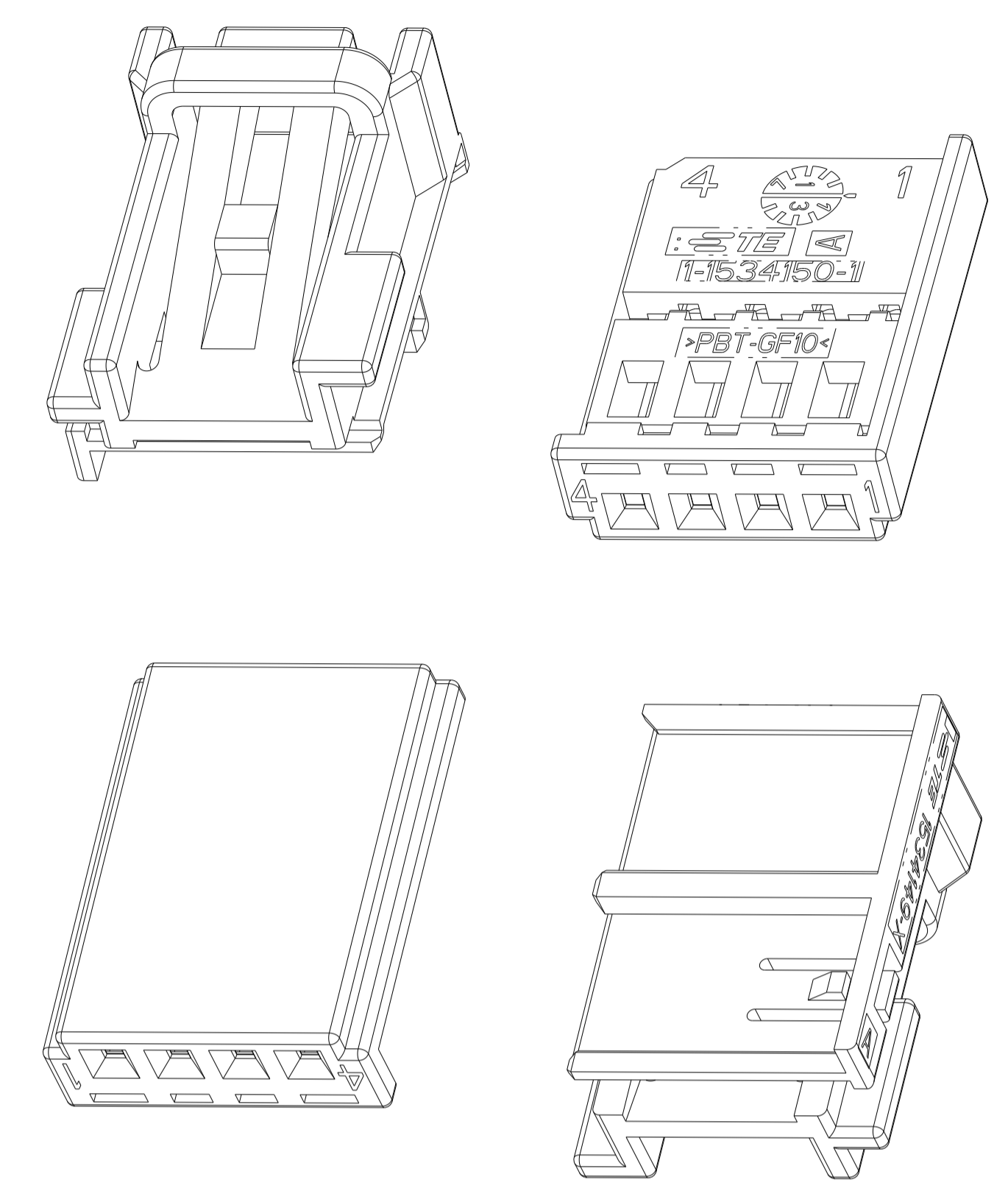
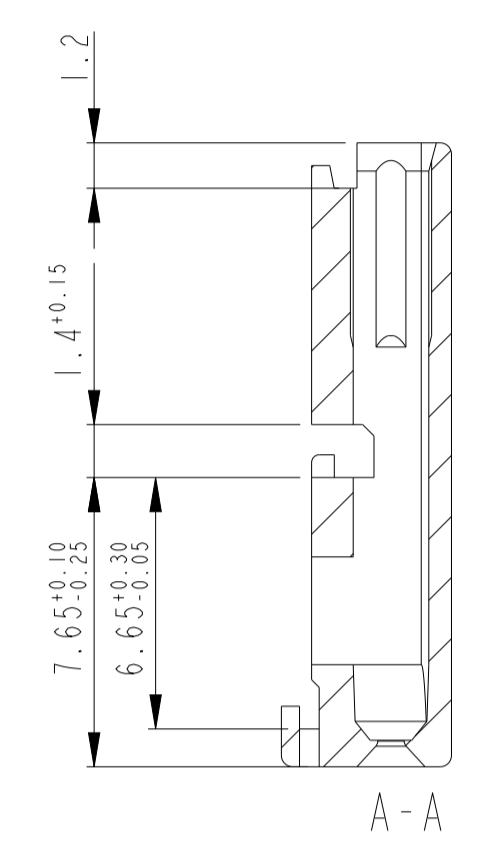
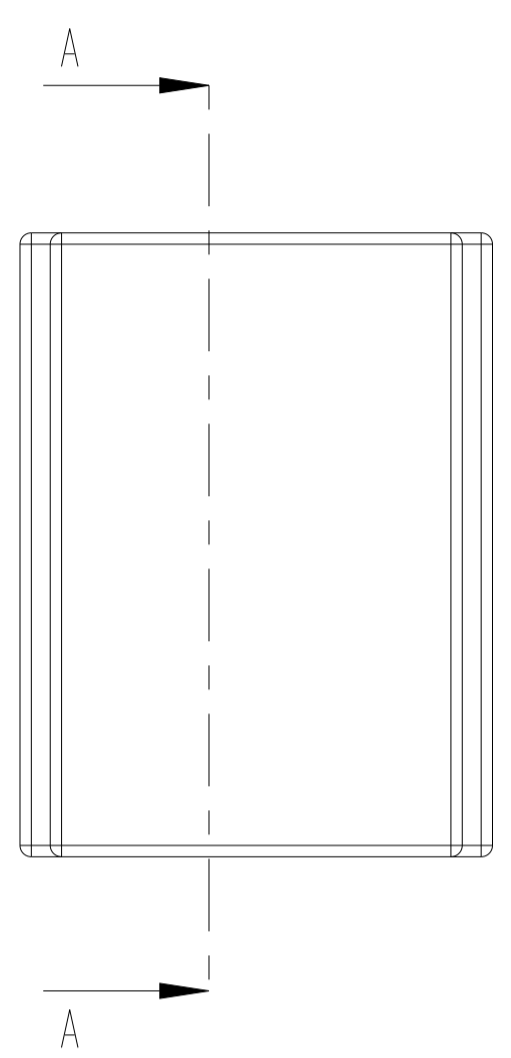
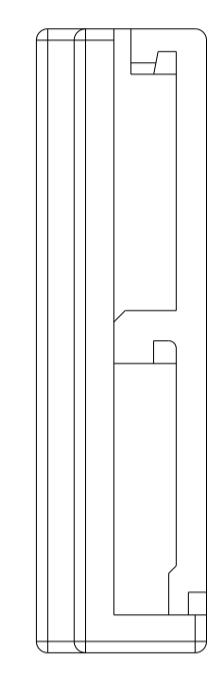
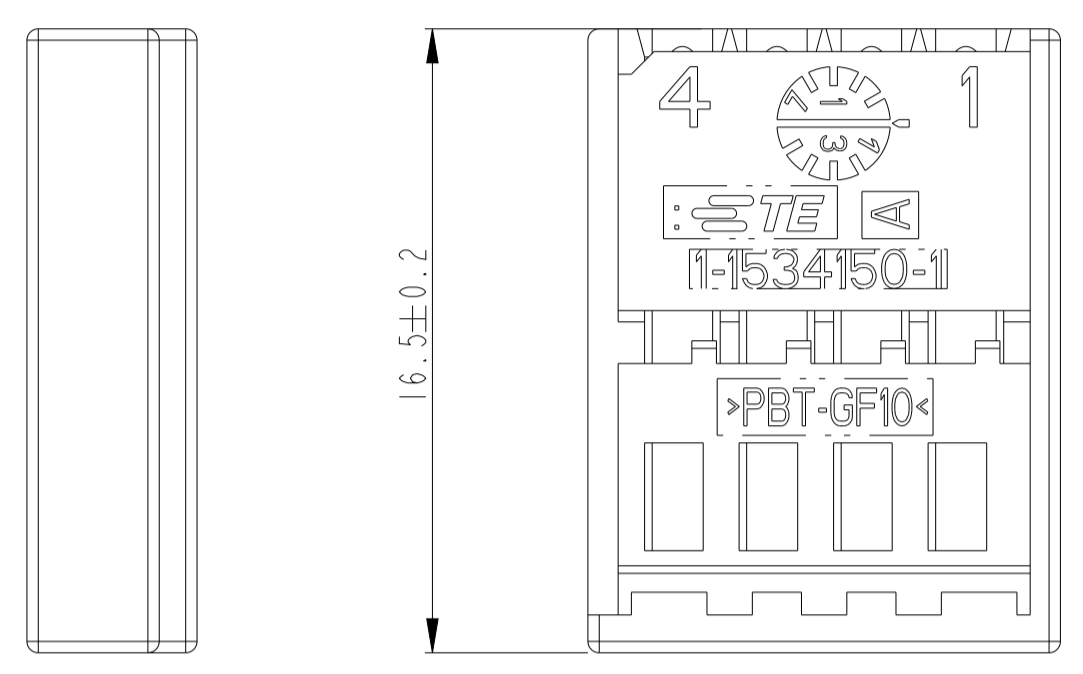
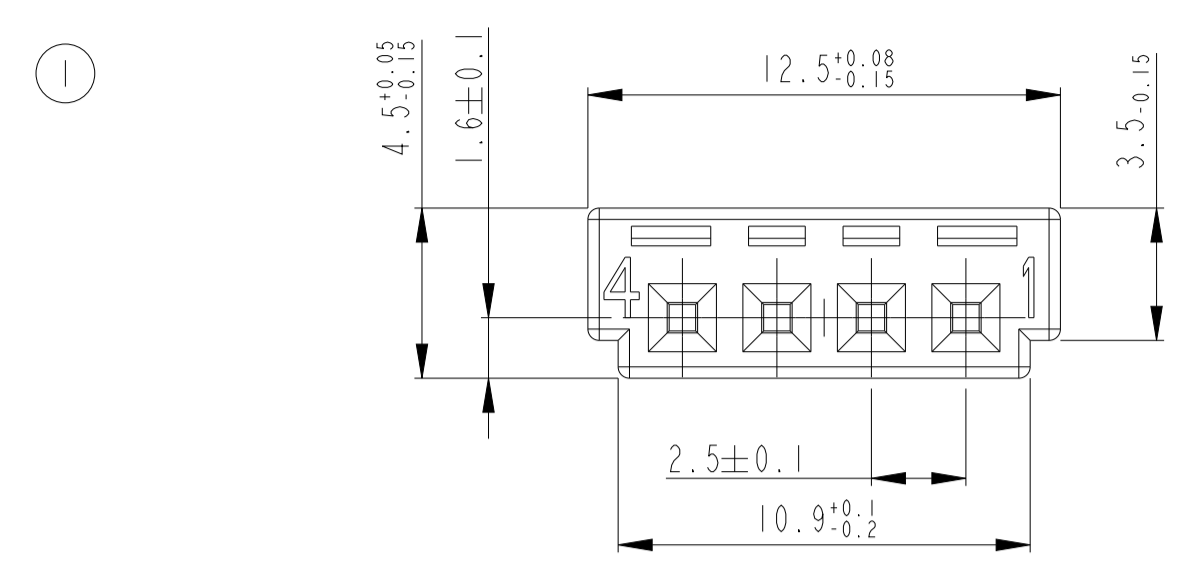


REVISIONS		DATE	DWN	APVD
P	LYN	DESCRIPTION		
A5		NOTE 6 ADDED	29AUG2008	PS MZ
A6		PN 1534148-3 OBSOLETE	18NOV2020	MKS ACH



Bemerkungen

- Nach dem Bestuecken der Kontaktkammern mit Kontakten werden Teil 1 und 2 zusammengeschoben
- Gegenstecker nach Zeichnung 114-18491
- Passende Kontakte 1355717 (DGB 0.14 - 0.22 mm<sup>2</sup>)  
928999 (DGB 0.20 - 0.50 mm<sup>2</sup>)  
963715 (DGB 0.75 mm<sup>2</sup>)
- Passender Gegenstecker 1534156
- Alle Teile müssen einzeln bestellt werden
- Schnittstellenzeichnung siehe 114-18491

NOTES

- AFTER PROVIDING THE CAVITIES WITH CONTACTS PART 1 AND 2 WILL BE PUSHED TOGETHER
- MATING PART EXECUTION ACC. TO DRAWING 114-18491
- SUITABLE CONTACTS 1355717 (WIRE RANGE 0.14 - 0.22 mm<sup>2</sup>)  
928999 (WIRE RANGE 0.20 - 0.50 mm<sup>2</sup>)  
963715 (WIRE RANGE 0.75 mm<sup>2</sup>)
- SUITABLE MATING PART 1534156
- ALL PARTS MUST BE ORDERED SEPARATELY
- INTERFACE DRAWING SEE 114-18491

COD.	PART-NO./ORDER-NO.	REV.	QTY.	ITEM NO.	MATERIAL	COLOUR FARBE	DESCRIPTION Benennung
OBSOLETE	0-1534149-3	A	1	2	PBT-GF10	RED/rot	RETAINER/ Verriegelung
	1-1534150-3	A	1	1	PBT-GF10	RED/rot	REC.HSG./ Bu.-Geh.
B	0-1534149-2	A	1	2	PBT-GF10	BROWN/braun	RETAINER/ Verriegelung
	1-1534150-2	A	1	1	PBT-GF10	BROWN/braun	REC.HSG./ Bu.-Geh.
A	0-1534149-1	A	1	2	PBT-GF10	BLACK/schwarz	RETAINER/ Verriegelung
	1-1534150-1	A	1	1	PBT-GF10	BLACK/schwarz	REC.HSG./ Bu.-Geh.

THIS DRAWING IS A CONTROLLED DOCUMENT. DIESES ZEICHNUNGSBLATT WIRD DURCH UNS KONTROLLIERT. ANMERKUNG: DIE FÜR TECHNISCHE KORREKTUR FÜR DIESE ZEICHNUNG VERANTWORTLICHEN ANGEHÖRIGEN SIND AN DER ANGEBOGENEN ADRESSE ZU ERREICHEN. DIMENSIONS: TOLEANCES, UNLESS OTHERWISE SPECIFIED: ALL GENERAL TOLERANCES. MASSEINHEITEN: MM. FINISH: UNLESS OTHERWISE SPECIFIED: ALL GENERAL FINISHES.

DWN: G. Fischer 04MAR02  
CHK: B. Kirsch 04MAR02

NAME: REC.HSG., 4 POSN., MOS, ASSY  
PRODUCT SPEC: 108-18924  
APPLICATION SPEC: 114-18630

SIZE: A1  
CAGE CODE: 00779  
DRAWING NO.: 1534148

RESTRICTED TO NUR FÜR: A6

CUSTOMER DRAWING / KUNDENZEICHNUNG SCALE: 5:1 SHEET: 1 OF 1 REV: A6