

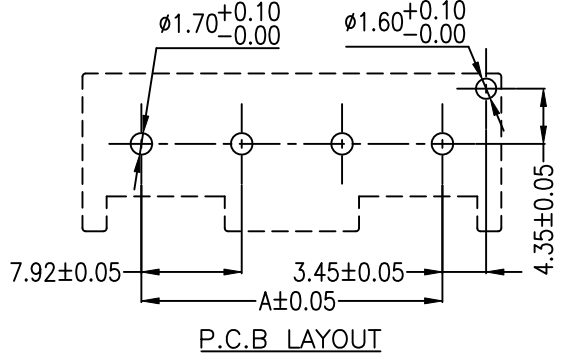
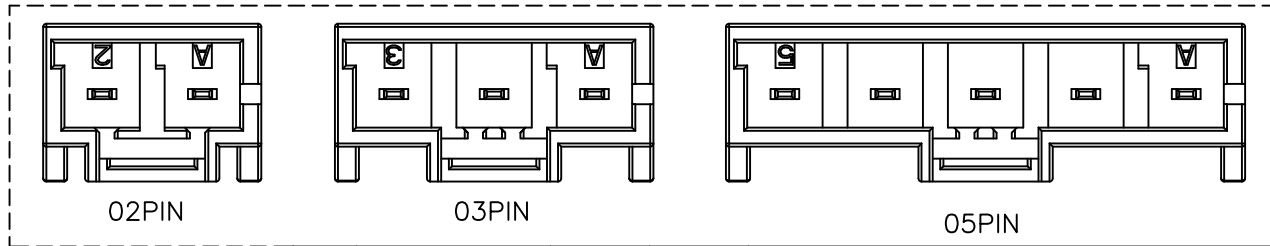
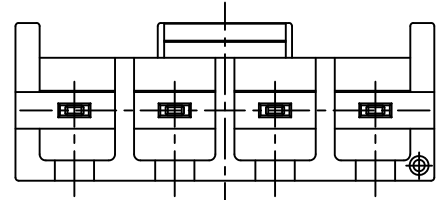
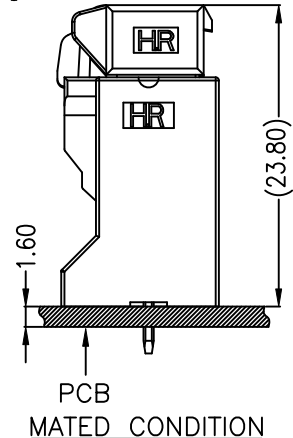
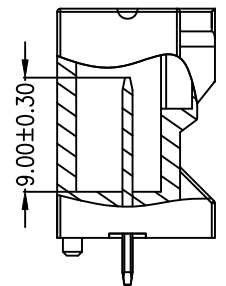
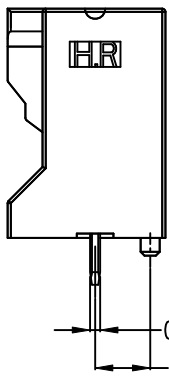
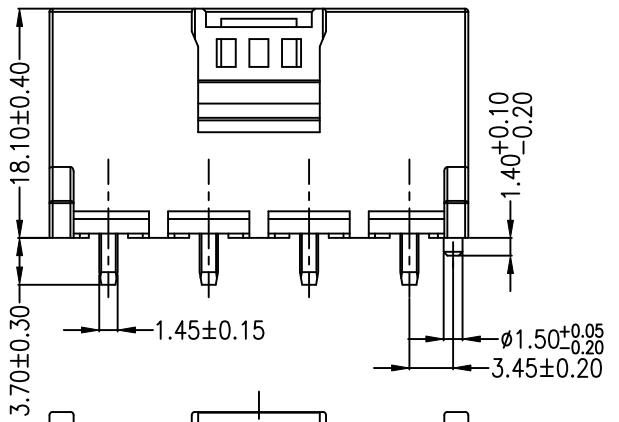
P/N LEGEND

A7925	WV	-F	-XP	R	N	B	XX	N	R0	G
①	②	③	④	⑤	⑥	⑦	⑧	⑨	⑩	⑪

① Series No.
 ② Connector type: WV=Vertical
 ③ Mounting type: F=With boss
 ④ No. of circuits
 ⑤ R=RoHs
 ⑥ Material: N=Nylon66-V0, NO FLAME
 ⑦ Color: B=Black
 ⑧ Plating code for contacts:
 T1=Tin-plated 80u" MIN over Nickel-plated 30u" MIN
 HC=Gold-plated 8u" MIN on contact area,
 Matte Tin-plated 80u" MIN on solder area
 over Nickel-plated 30u"
 ⑨ Plating code: N=Non-plating
 ⑩ Option code: R0=R TYPE
 ⑪ Packing code: G=Bag

SPECIFICATIONS
 Current Rating: 13A~30A AC,DC
 Voltage Rating: 600V AC,DC
 Temperature Range: -55°C ~ +85°C
 Contact Resistance: 5mΩ Max.
 Insulation Resistance: 1000MΩ Min.
 Withstanding Voltage: 2500V AC/minute
 Pin Material: High conductivity copper alloy

Circuit No.	Dimensions	
	A	B
02P	7.92	17.22
03P	15.84	25.14
04P	23.76	33.06
05P	31.68	40.98



				燦達電子工業股份有限公司 JOINT TECH ELECTRONIC IND. CO., LTD.		
				UNIT	SCALE	SHEET
mm	1 : 1	1 of 1	7.92mm PITCH 180° WAFER RIGHT TYPE			
DRAWN BY		APPROVED BY		DRAW NO. :		
鄭小嬌		徐富永			A7925WV-F-XPRXXXXXRG	
2022.07.12		2022.07.12		REV. A0		
GENERAL TOLERANCE						
X. X±0.25		ANGLE±		REV. A0		
X. XX±0.15						
X. XXX±0.05						
A0	NEW RELEASE	2022.07.12	鄭小嬌			
REV.	DESCRIPTION	DATE	NAME			

A

B

C

D

A

B

C

D

1|

2|

3|

4|

1|

2|

3|

4|