

P/N LEGEND

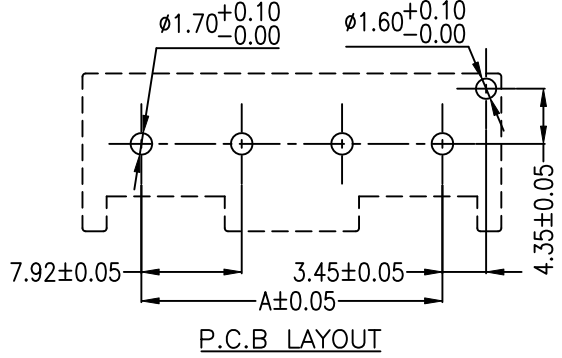
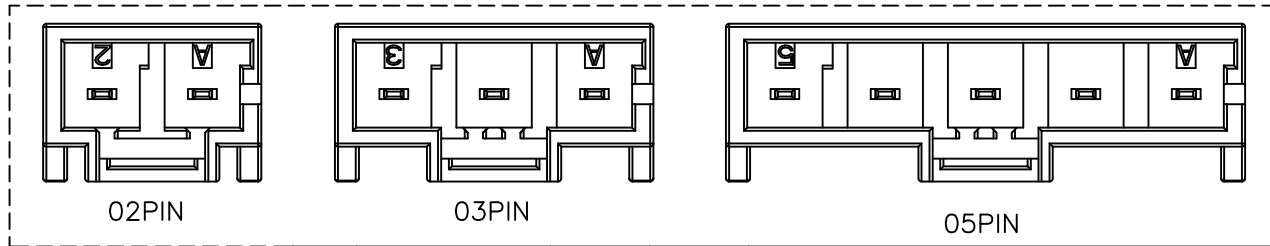
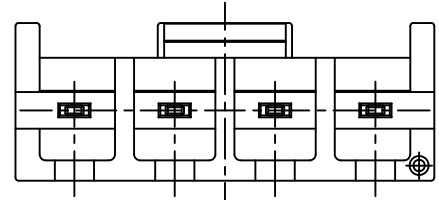
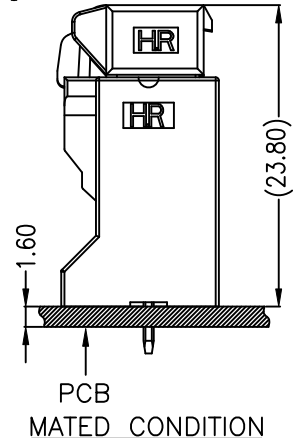
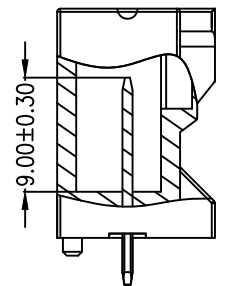
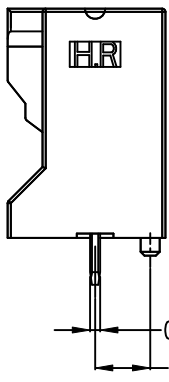
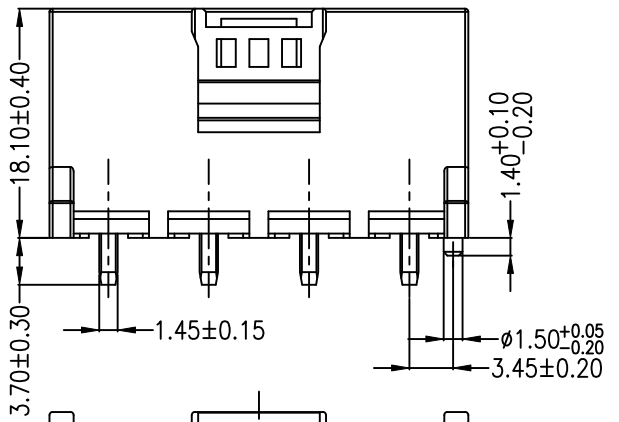
A7925 WV-F-XP R N R XX N LO G

① Series No.
 ② Connector type: WV=Vertical
 ③ Mounting type: F=With boss
 ④ No. of circuits
 ⑤ R=RoHs
 ⑥ Material: N=Nylon66-V0, NO FLAME
 ⑦ Color: R=Red
 ⑧ Plating code for contacts:
 T1=Tin-plated 80u" MIN over Nickel-plated 30u" MIN
 HC=Gold-plated 8u" MIN on contact area,
 Matte Tin-plated 80u" MIN on solder area
 over Nickel-plated 30u"
 ⑨ Plating code: N=Non-plating
 ⑩ Option code: L0=L TYPE
 ⑪ Packing code: G=Bag

SPECIFICATIONS

Current Rating: 13A~30A AC,DC
 Voltage Rating: 600V AC,DC
 Temperature Range: -55°C ~ +85°C
 Contact Resistance: 5mΩ Max.
 Insulation Resistance: 1000MΩ Min.
 Withstanding Voltage: 2500V AC/minute
 Pin Material: High conductivity copper alloy

Circuit No.	Dimensions	
	A	B
02P	7.92	17.22
03P	15.84	25.14
04P	23.76	33.06
05P	31.68	40.98



燦達電子工業股份有限公司
JOINT TECH ELECTRONIC IND. CO., LTD.

UNIT: mm SCALE: 1:1 SHEET: 1 of 1
 DRAWN BY: 鄭小嬌 2022.07.12
 APPROVED BY: 徐富永 2022.07.12
 GENERAL TOLERANCE:
 X. X±0.25
 X. XX±0.15
 X. XXX±0.05

TITLE:
7.92mm PITCH 180° WAFER LEFT TYPE
 DRAW NO.: A7925WV-F-XPRXXXXXLOG REV. A0

REV.	DESCRIPTION	DATE	NAME
A0	NEW RELEASE	2022.07.12	鄭小嬌