

P/N LEGEND

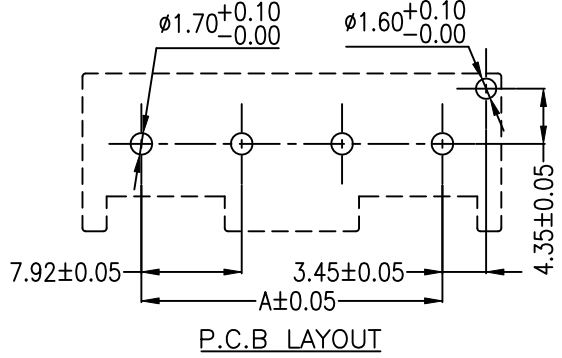
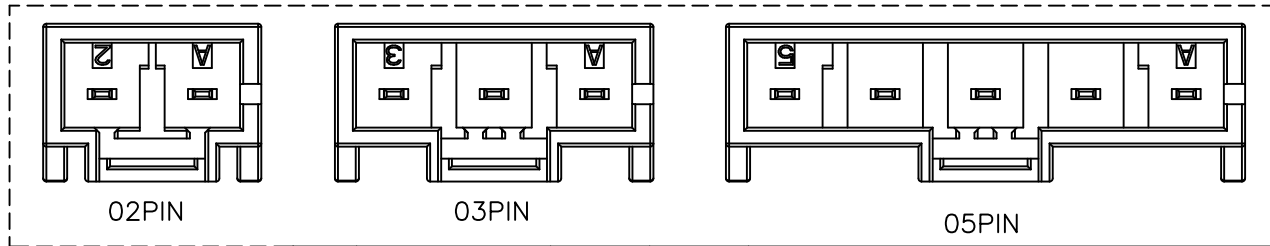
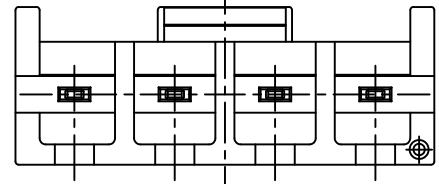
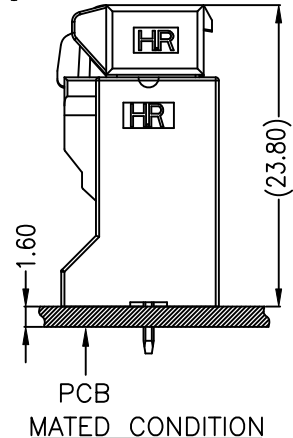
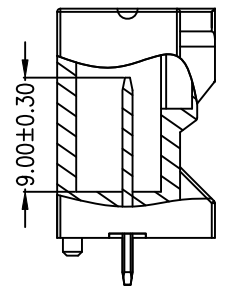
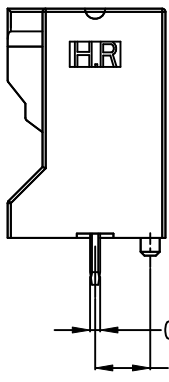
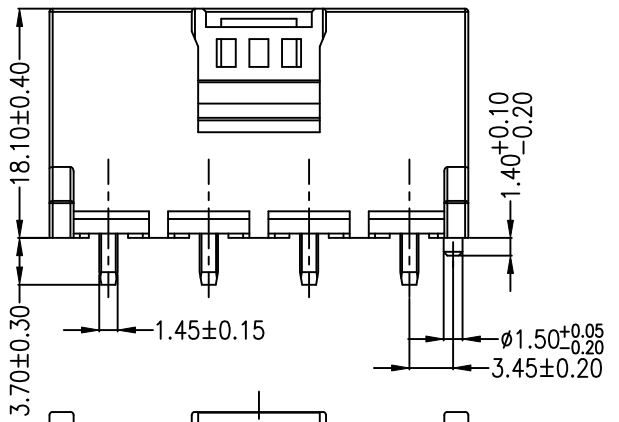
A7925 WV-F-XP R N N XX N 00 G

① Series No.
 ② Connector type: WV=Vertical
 ③ Mounting type: F=With boss
 ④ No. of circuits
 ⑤ R=RoHs
 ⑥ Material: N=Nylon66-V0, NO FLAME
 ⑦ Color: N=Natural
 ⑧ Plating code for contacts:
 T1=Tin-plated 80u" MIN over Nickel-plated 30u" MIN
 HC=Gold-plated 8u" MIN on contact area,
 Matte Tin-plated 80u" MIN on solder area
 over Nickel-plated 30u"
 ⑨ Plating code: N=Non-plating
 ⑩ Option code: 00=Standard
 ⑪ Packing code: G=Bag

SPECIFICATIONS

Current Rating: 13A~30A AC,DC
 Voltage Rating: 600V AC,DC
 Temperature Range: -55°C ~ +85°C
 Contact Resistance: 5mΩ Max.
 Insulation Resistance: 1000MΩ Min.
 Withstanding Voltage: 2500V AC/minute
 Pin Material: High conductivity copper alloy

Circuit No.	Dimensions	
	A	B
02P	7.92	17.22
03P	15.84	25.14
04P	23.76	33.06
05P	31.68	40.98



				UNIT	SCALE	SHEET	TITLE:
				mm	1 : 1	1 of 1	
DRAWN BY		APPROVED BY		7.92mm PITCH 180° WAFER STANDARD TYPE			
鄭小嬌		徐富永					
2022.06.20		2022.06.20		DRAW NO. : A7925WV-F-XPRXXXXX00G			
GENERAL TOLERANCE				ANGLE±			
X. X±0.25		X. XX±0.15					
X. XXX±0.05		X. XXX±0.05		REV. AO			
AO	NEW RELEASE	2022.06.20	鄭小嬌				
REV.	DESCRIPTION	DATE	NAME				

A

B

C

D

A

B

C

D

1|

2|

3|

4|

1|

2|

3|

4|