

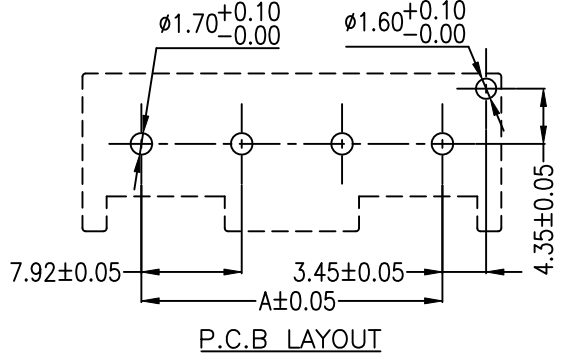
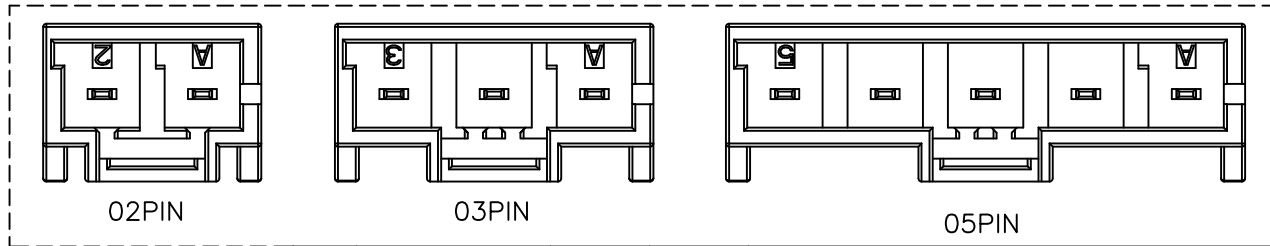
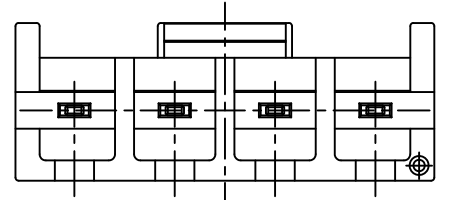
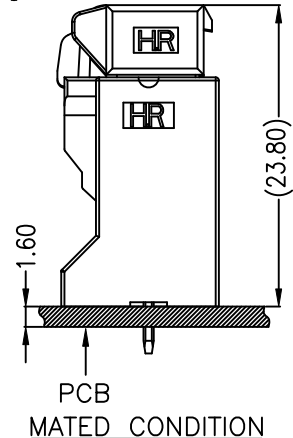
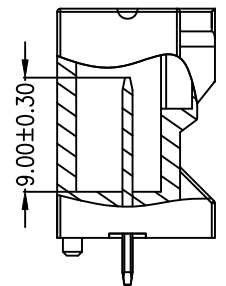
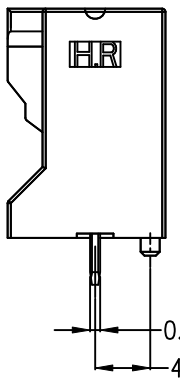
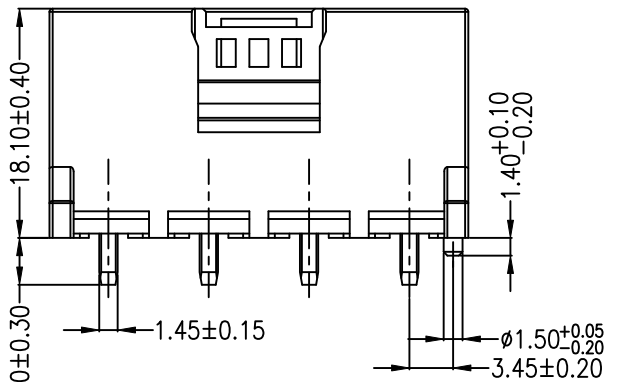
**P/N LEGEND**

A7925	WV	-F	-XP	R	N	B	XX	N	R0	G
①	②	③	④	⑤	⑥	⑦	⑧	⑨	⑩	⑪

① Series No.  
 ② Connector type: WV=Vertical  
 ③ Mounting type: F=With boss  
 ④ No. of circuits  
 ⑤ R=RoHs  
 ⑥ Material: N=Nylon66-V0, NO FLAME  
 ⑦ Color: B=Black  
 ⑧ Plating code for contacts:  
 T1=Tin-plated 80u" MIN over Nickel-plated 30u" MIN  
 HC=Gold-plated 8u" MIN on contact area,  
 Matte Tin-plated 80u" MIN on solder area  
 over Nickel-plated 30u"  
 ⑨ Plating code: N=Non-plating  
 ⑩ Option code: R0=R TYPE  
 ⑪ Packing code: G=Bag

**SPECIFICATIONS**  
 Current Rating: 13A~30A AC,DC  
 Voltage Rating: 600V AC,DC  
 Temperature Range: -55°C ~ +85°C  
 Contact Resistance: 5mΩ Max.  
 Insulation Resistance: 1000MΩ Min.  
 Withstanding Voltage: 2500V AC/minute  
 Pin Material: High conductivity copper alloy

Circuit No.	Dimensions	
	A	B
02P	7.92	17.22
03P	15.84	25.14
04P	23.76	33.06
05P	31.68	40.98



				UNIT	SCALE	SHEET	TITLE:
				mm	1 : 1	1 of 1	
DRAWN BY		APPROVED BY		7.92mm PITCH 180° WAFER RIGHT TYPE			
鄭小嬌		徐富永					
2022.07.12		2022.07.12					
GENERAL TOLERANCE				DRAW NO. :			
X. X±0.25		ANGLE±		A7925WV-F-XPRXXXXXRG			
X. XX±0.15		▽					
X. XXX±0.05		⊕		REV. A0			
A0	NEW RELEASE	2022.07.12	鄭小嬌				
REV.	DESCRIPTION	DATE	NAME				

A

A

B

B

C

C

D

D

1|

2|

3|

4|

1|

2|

3|

4|