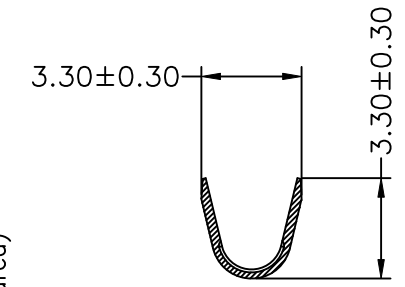
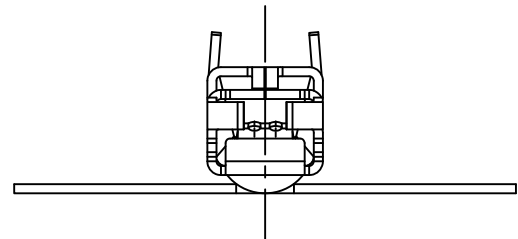


SEC:A-A



SEC:B-B



Ordering Information & Specifications

Part No.	Wire Range	Material	Finish	Q'ty/Reel
A7925-TCE-LB	AWG#14-#16	High conductivity copper alloy	Tin-plated 80u"Min over Nickel-plated 30u"Min	2,500pcs
A7925-HC-LB8	AWG#14-#16	High conductivity copper alloy	Gold-plated 8u" on contact area over Nickel-plated 30u"Min	2,500pcs

Note: E-Stamping before Tin-plated
E-Stamping before Gold-plated

				UNIT	SCALE	SHEET	TITLE:
				mm	1 : 1	1 of 1	
DRAWN BY		APPROVED BY		<p>7.92mm PITCH CRIMP TERMINAL</p>			
鄭小嬌		徐富永					
2022.06.20		2022.06.20					
GENERAL TOLERANCE				DRAW NO. : A7925-XXX-LBX			
X. X±0.25		ANGLE±		REV. A0			
X. XX±0.15		▽					
X. XXX±0.05		⊕					
A0	NEW RELEASE	2022.06.20	鄭小嬌				
REV.	DESCRIPTION	DATE	NAME				