



CHENMKO ENTERPRISE CO.,LTD

Halogens free devices

SURFACE MOUNT

SCHOTTKY BARRIER DIODE

VOLTAGE 30 Volts CURRENT 0.F Ampere

CH520G3-30GP

APPLICATION

* Low power rectification and high speed switching

FEATURE

* Extremely small surface mounting type. (SOD-923)
* High reliability

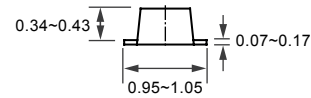
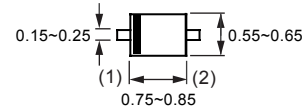
MARKING

* E

CIRCUIT



SOD-923



Dimensions in millimeters

SOD-923

MAXIMUM RATINGS (At TA = 25°C unless otherwise noted)

| RATINGS | SYMBOL | CH520G3-30GP | UNITS |
|---|--------|--------------|-------|
| Maximum Recurrent Peak Reverse Voltage | VRRM | 30 | Volts |
| Maximum RMS Voltage | VRMS | 21 | Volts |
| Maximum DC Blocking Voltage | VDC | 30 | Volts |
| Maximum Average Forward Rectified Current | IO | 0.1 | Amps |
| Peak Forward Surge Current (Note 1) | IFSM | 0.5 | Amps |
| Typical Junction Capacitance between Terminal | CJ | 6.0 | pF |
| Maximum Operating Temperature Range | TJ | +125 | °C |
| Storage Temperature Range | TSTG | -40 to +125 | °C |

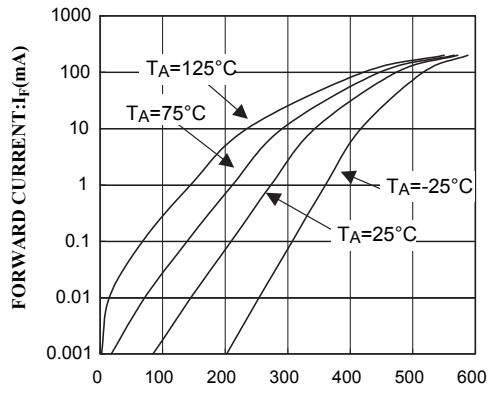
ELECTRICAL CHARACTERISTICS (At TA = 25°C unless otherwise noted)

| CHARACTERISTICS | SYMBOL | CH520G3-30GP | UNITS |
|---|--------|--------------|-------|
| Maximum Instantaneous Forward Voltage at IF= 10mA | VF | 0.45 | Volts |
| Maximum Average Reverse Current at VR= 10V | IR | 0.5 | uAmps |

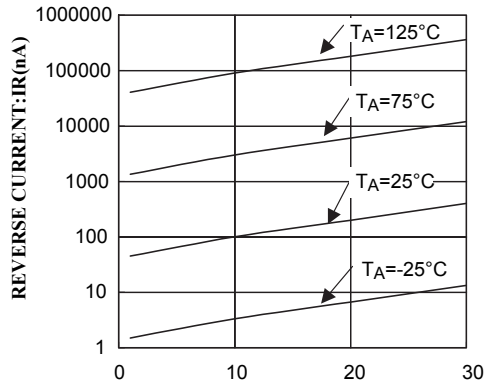
NOTES : 1.zfor1.6Hz for 1 sin wave

2011-04

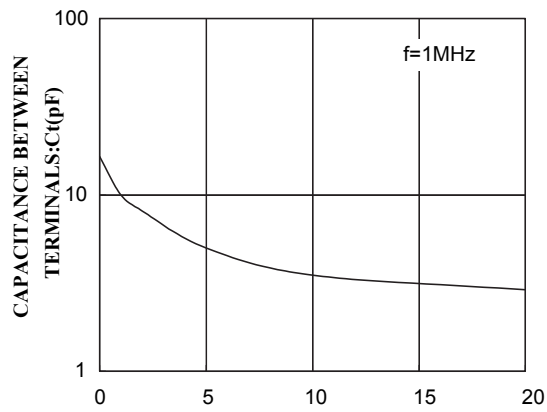
RATING CHARACTERISTIC CURVES (CH520G3-30GP)



VF-IF CHARACTERISTICS
Fig.1 FORWARD VOLTAGE : V_F (mV)



VR-IR CHARACTERISTICS
Fig.2 REVERSE VOLTAGE: V_R (V)



VR- C_t CHARACTERISTICS
Fig.3 REVERSE VOLTAGE: V_R (V)