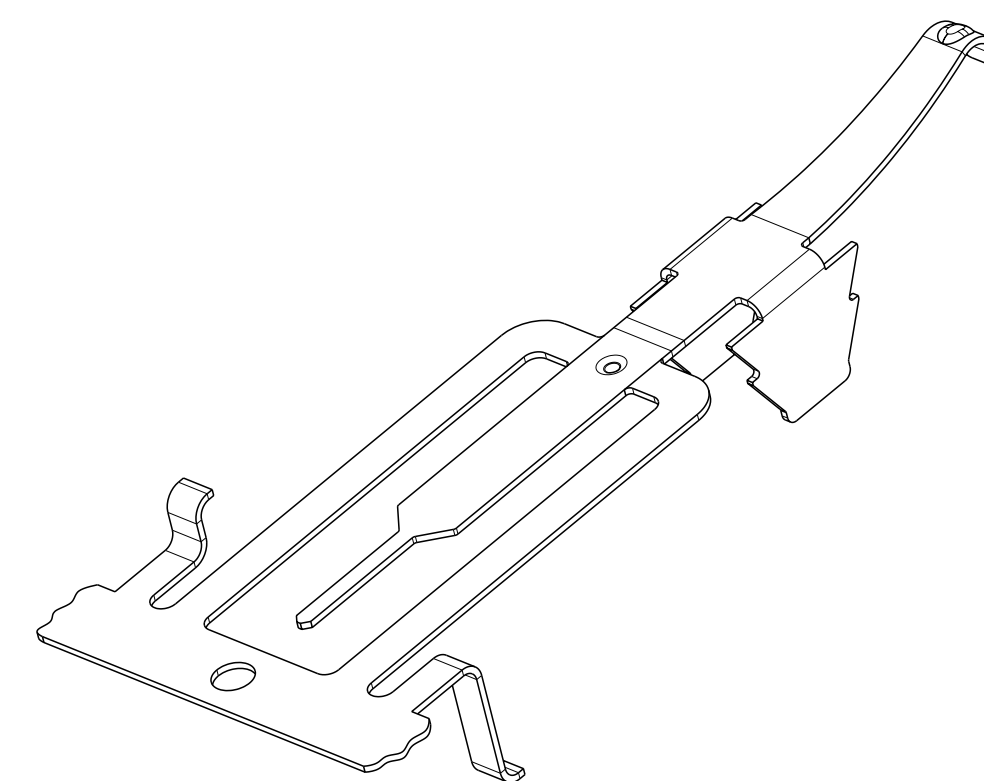
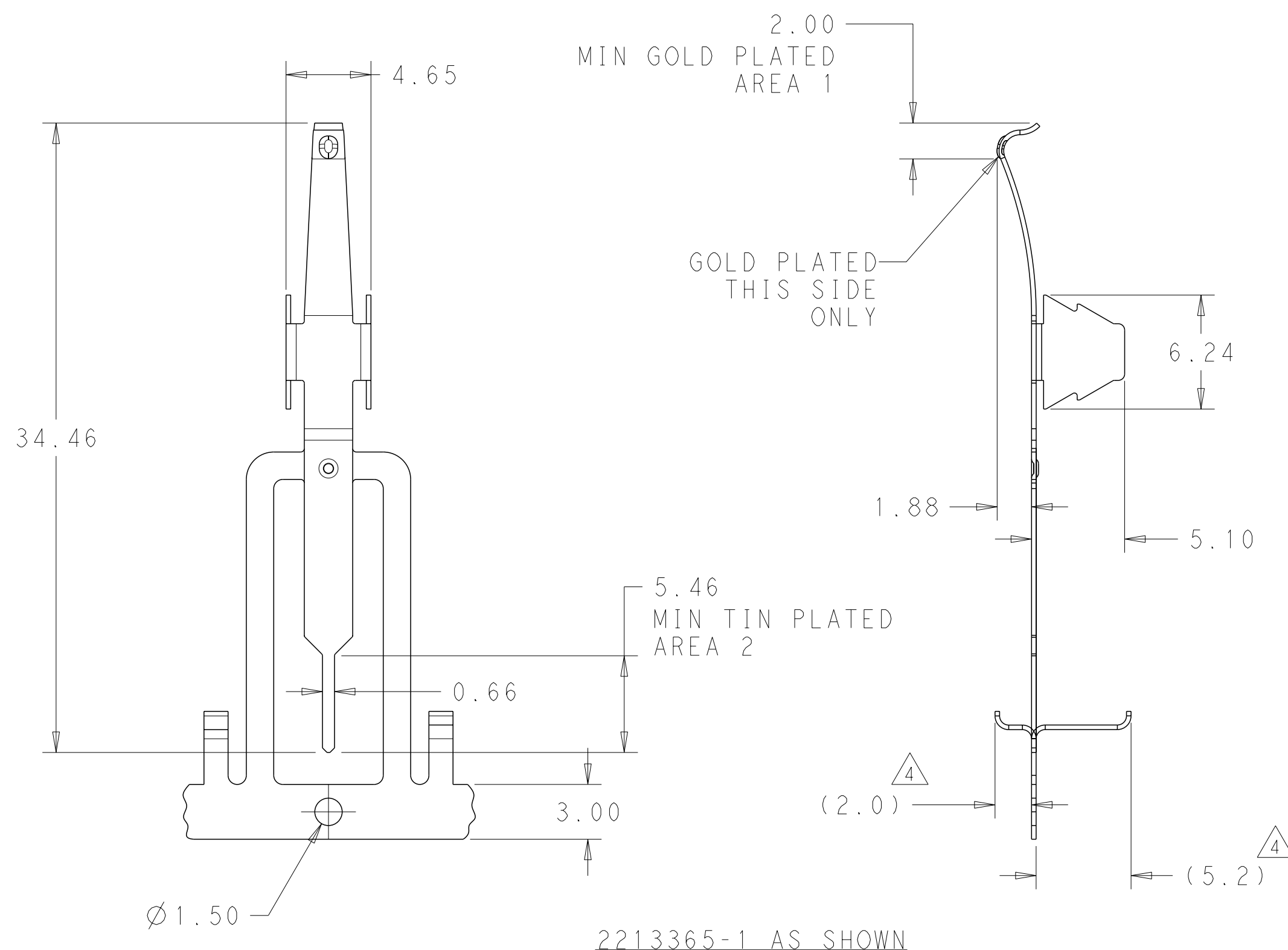


THIS DRAWING IS UNPUBLISHED. RELEASED FOR PUBLICATION 20
 © COPYRIGHT 20 BY - ALL RIGHTS RESERVED.

| LOC | | DIST | | REVISIONS | | | |
|-----|-----|---------------------------|-----------|-----------|------|--|--|
| P | LTR | DESCRIPTION | DATE | DWN | APVD | | |
| | A | REVISED PER ECR-14-012230 | 12SEP2014 | RS | DD | | |
| | A1 | REVISED PER ECR-17-018430 | 28DEC2017 | GCM | DD | | |

NOTES:

- MATERIAL: COPPER ALLOY 0.254 THICK
 FINISH: NICKEL UNDERPLATE ENTIRE CONTACT 0.127 μm MIN THICK. GOLD PLATED IN AREA 1 ON ONE SIDE ONLY 0.76 μm MIN THICK. MATTE TIN PLATED IN AREA 2 3.0 μm MIN THICK
- FINAL FORMING AND LOOSE PIECE OPERATIONS AS SHOWN ON SHEET 2 MUST BE PERFORMED BY CUSTOMER.
- APPLICATION FEED IS 14.64.
- CARRIER STRIP STANDOFFS PROVIDE PRODUCT PROTECTION DURING SHIPPING.



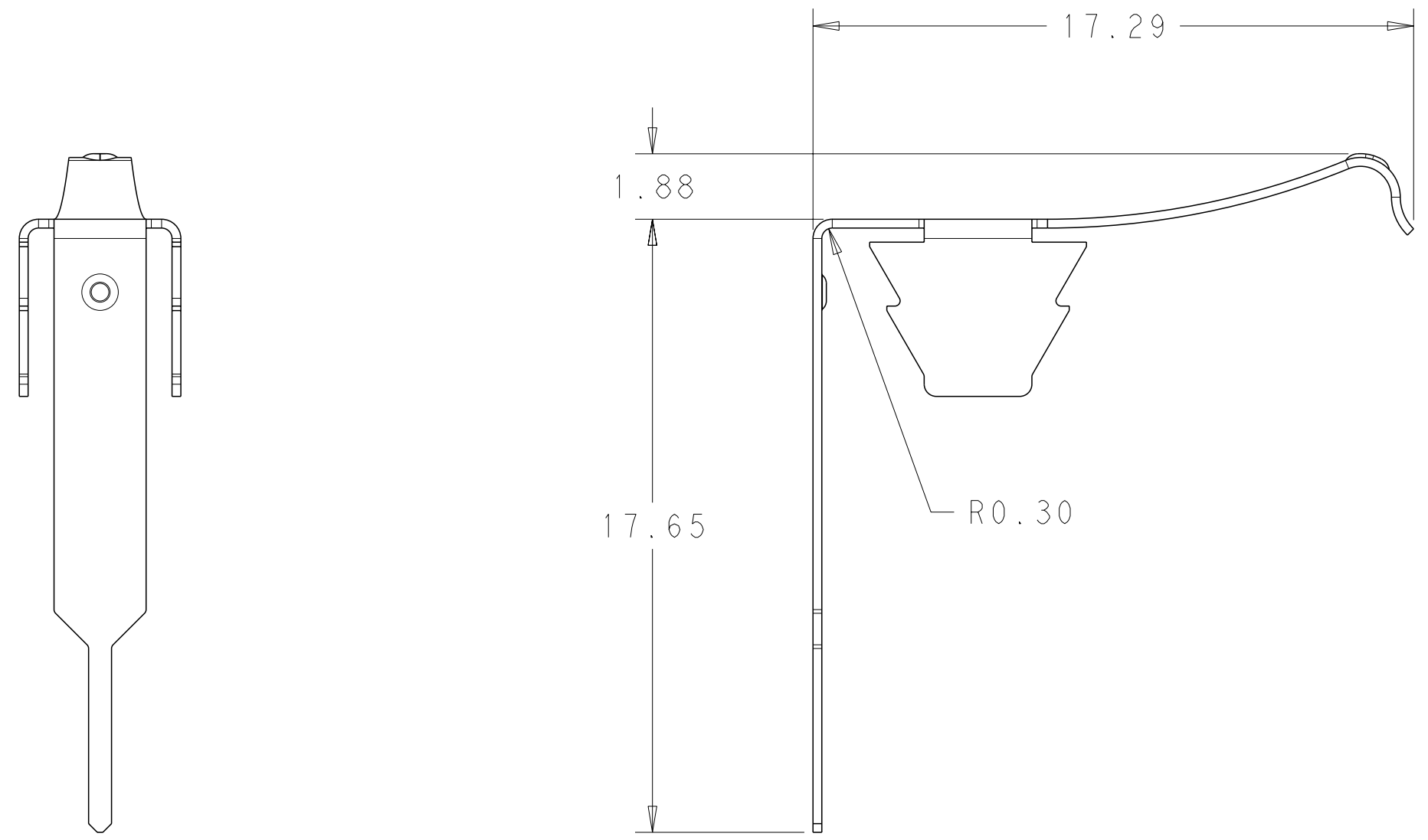
SCALE 4:1

| | |
|---------------------|-----------|
| AS SHOWN - ON STRIP | 2213365-1 |
| DESCRIPTION | PART NO. |


| | | | | | | | | |
|---|---|------------------|-------------------------------------|-------------|------------------|-----------|------------|-------------------------------|
| THIS DRAWING IS A CONTROLLED DOCUMENT. | | DWN | J. SHAFFER | 26 JUN 2013 | TE Connectivity | | | |
| DIMENSIONS: mm | | CHK | E. HOWARD | 26 JUN 2013 | | | | |
| TOLERANCES UNLESS OTHERWISE SPECIFIED: | | APVD | E. HOWARD | 26 JUN 2013 | | | | |
| 0 PLC ± 1 PLC ± 2 PLC ±0.13 3 PLC ± 4 PLC ± ANGLES ± FINISH | | NAME | DIMMABLE PHOTOCONTROL BRUSH CONTACT | | | | | |
| MATERIAL | - | PRODUCT SPEC | - | | SIZE | CAGE CODE | DRAWING NO | RESTRICTED TO |
| | | APPLICATION SPEC | - | | A200779 | C-2213365 | | |
| | | WEIGHT | - | | Customer Drawing | | | SCALE 1:1 SHEET 1 OF 4 REV A1 |

THIS DRAWING IS UNPUBLISHED. RELEASED FOR PUBLICATION 20
 © COPYRIGHT 20 BY - ALL RIGHTS RESERVED.

| LOC | | DIST | | REVISIONS | | | |
|-----|-----|-------------|------|-----------|------|--|--|
| P | LTR | DESCRIPTION | DATE | DWN | APVD | | |
| - | - | SEE SHEET 1 | - | - | - | | |
| | | | | | | | |
| | | | | | | | |

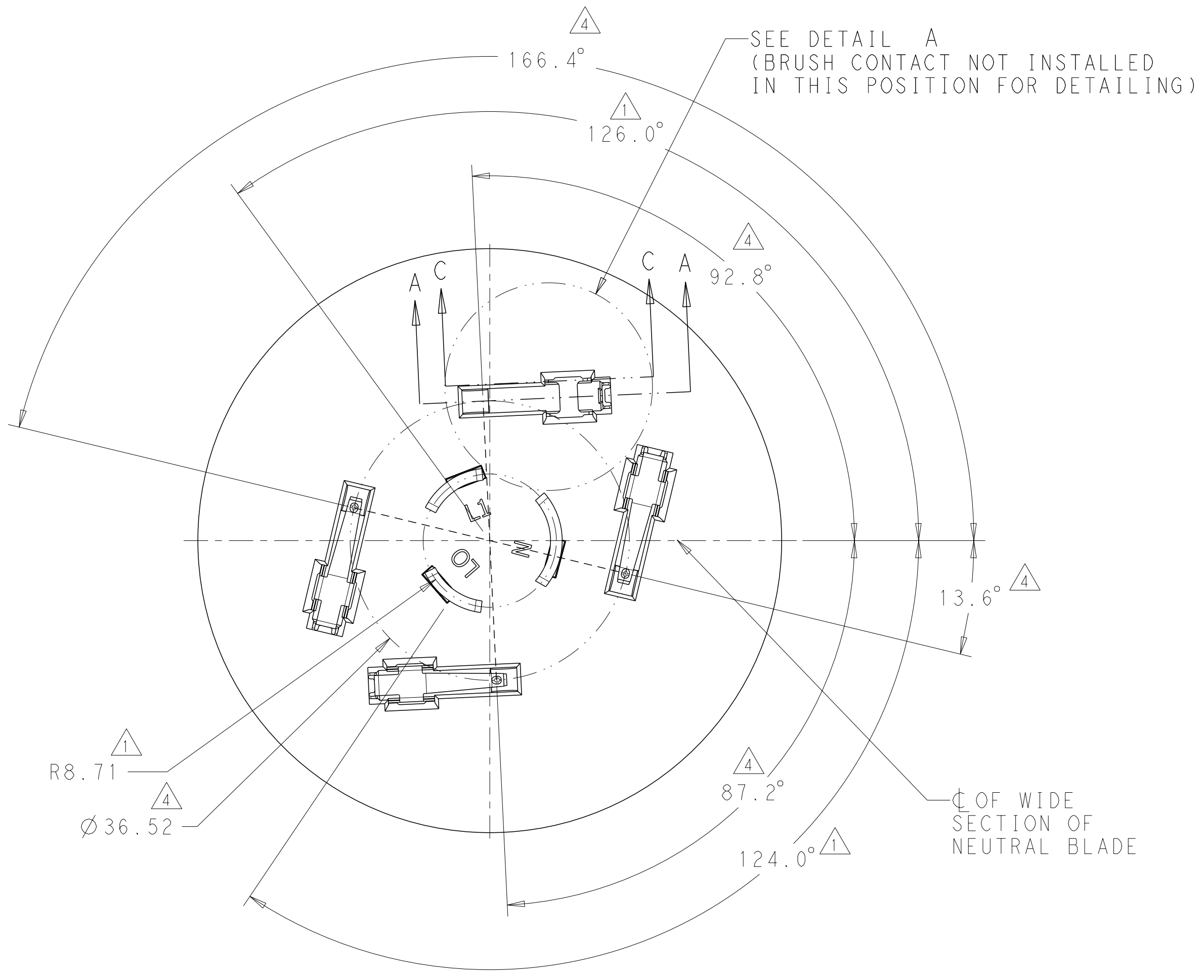


△
 RECOMMENDED FINAL FORMED
 LOOSE PIECE
 FINAL FORM AND LOOSE PIECE
 OPERATION MUST BE
 PERFORMED BY CUSTOMER

| | | | | |
|---|--|----------------------------------|---|------------------------|
| THIS DRAWING IS A CONTROLLED DOCUMENT. | | DWN J. SHAFFER 26 JUN 2013 |  TE Connectivity | |
| DIMENSIONS: mm | | CHK E. HOWARD 26 JUN 2013 | | |
| TOLERANCES UNLESS OTHERWISE SPECIFIED: | | APVD E. HOWARD 26 JUN 2013 | NAME DIMMABLE PHOTOCONTROL BRUSH CONTACT | |
| 0 PLC ± 1 PLC ± 2 PLC ±0.13 3 PLC ± 4 PLC ± ANGLES ± FINISH | | PRODUCT SPEC - | SIZE A200779 | CAGE CODE C-2213365 |
| MATERIAL - | | APPLICATION SPEC - | DRAWING NO - | RESTRICTED TO - |
| - | | WEIGHT - | SCALE 1:1 | SHEET 2 OF 4 |
| - | | Customer Drawing | REV A1 | |

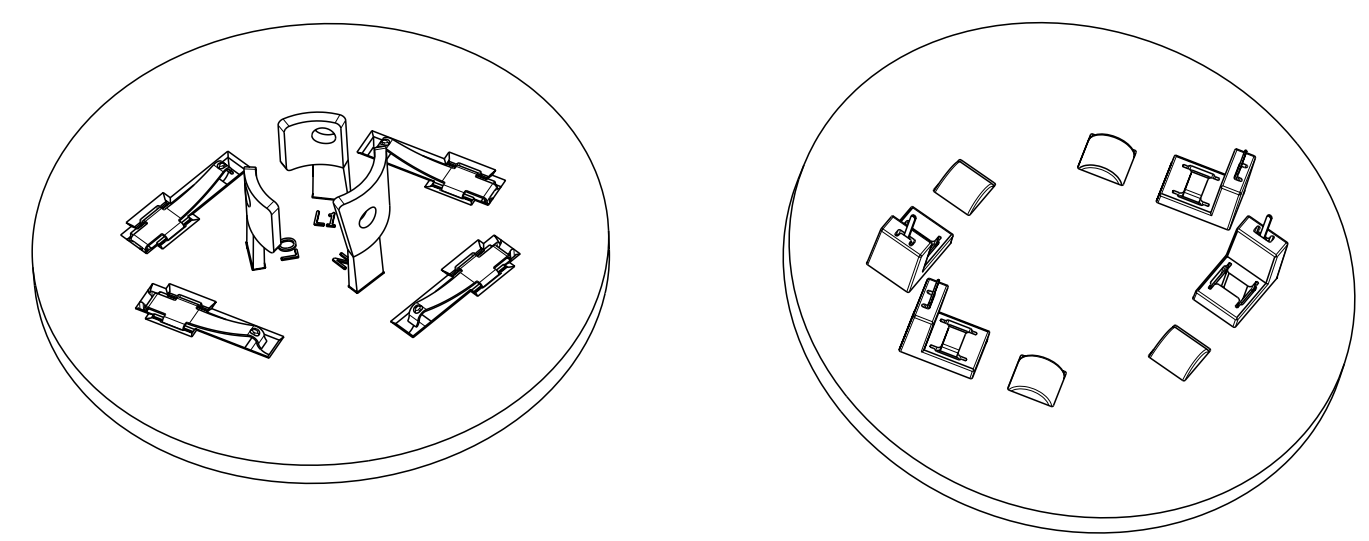
THIS DRAWING IS UNPUBLISHED. RELEASED FOR PUBLICATION 20
 © COPYRIGHT 20 BY - ALL RIGHTS RESERVED.

| LOC | | DIST | | REVISIONS | | | |
|-----|-----|-------------|------|-----------|------|--|--|
| P | LTR | DESCRIPTION | DATE | DWN | APVD | | |
| - | - | SEE SHEET 1 | - | - | - | | |

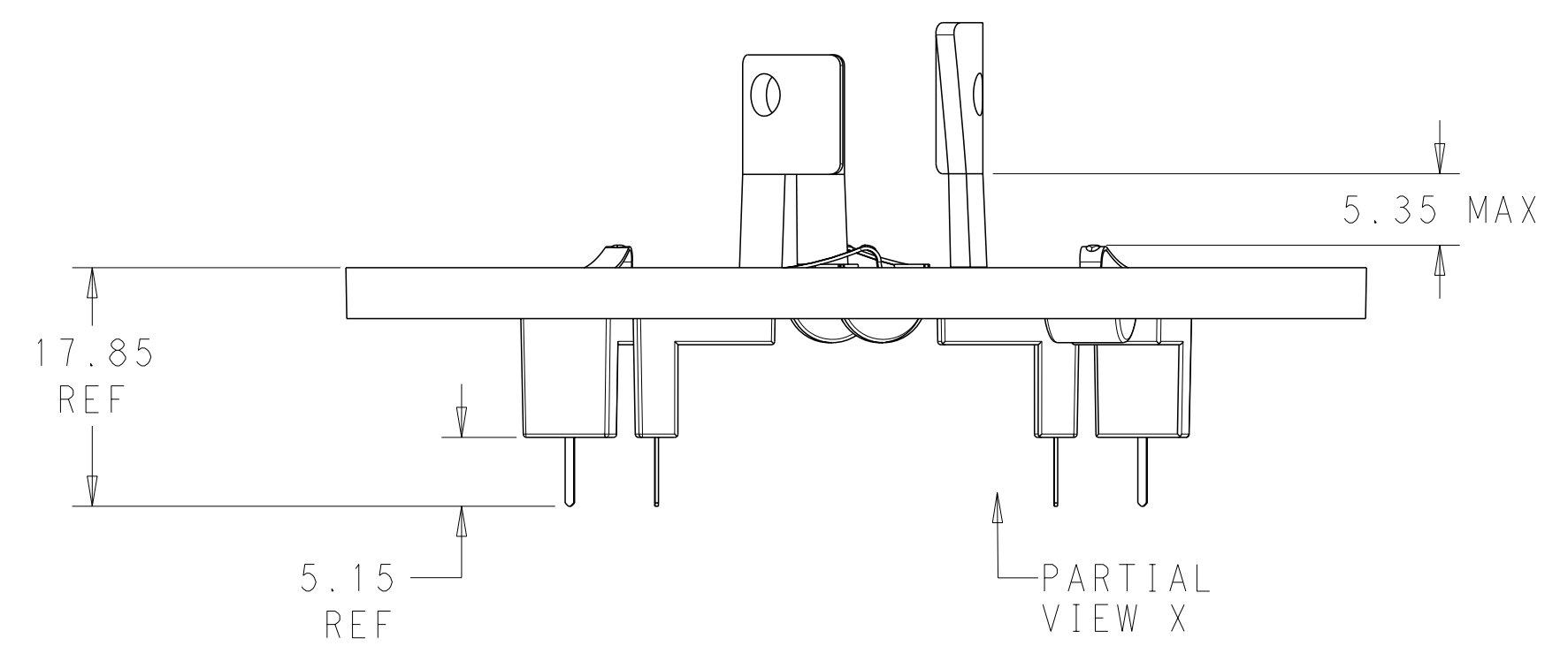


NOTES FOR BRUSH CONTACT POCKET DETAILS:

- 1. DIMENSIONS ARE PER ANSI C136.10
- 2. UNLESS OTHERWISE NOTED, ALL DIMENSIONS ARE ±0.127mm
- 3. UNLESS OTHERWISE NOTED, ALL ANGLES ARE ±0.5°
- 4. CIRCULAR AND ANGULAR POSITION FOR CONTACT POINT ON BRUSH CONTACT.
- 5. CUSTOMER MAY ROTATE BRUSH CONTACT POCKET PER THEIR PHOTOCELL DESIGN REQUIREMENTS, BUT BRUSH CONTACT POINT MUST BE POSITIONED AS SHOWN TO BE COMPATIBLE WITH ANSI C136.41-200X DIMMING RECEPTACLE.



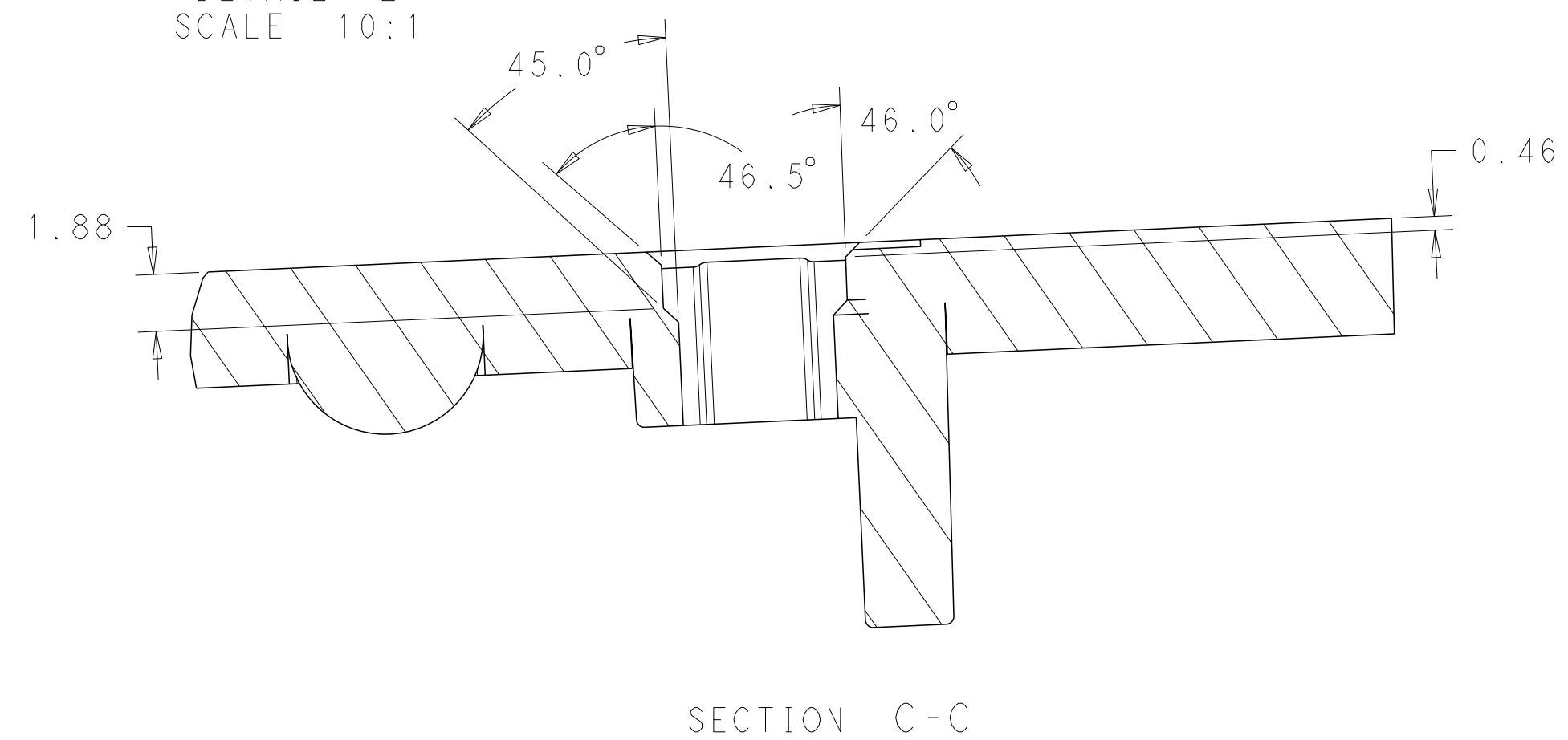
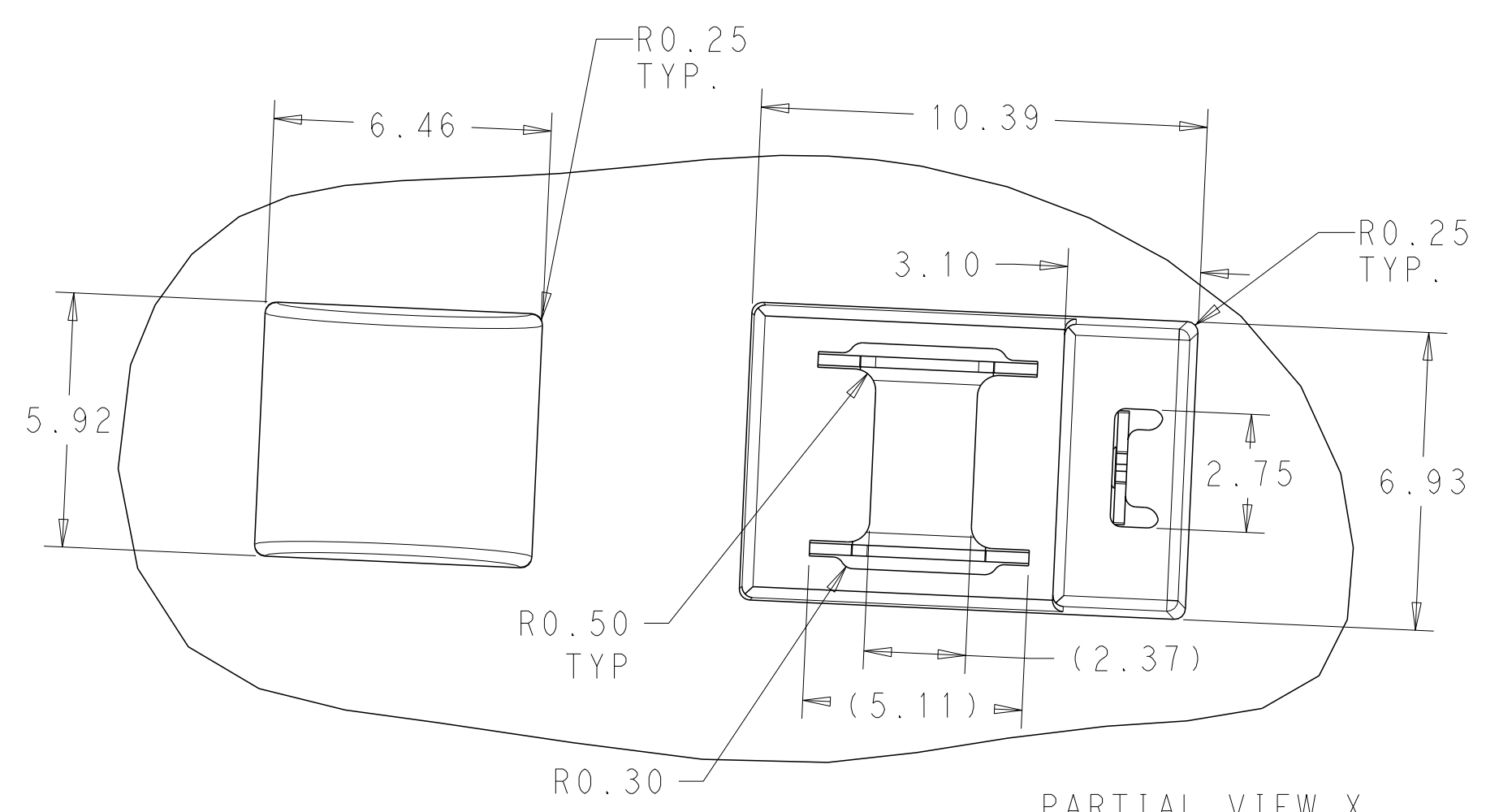
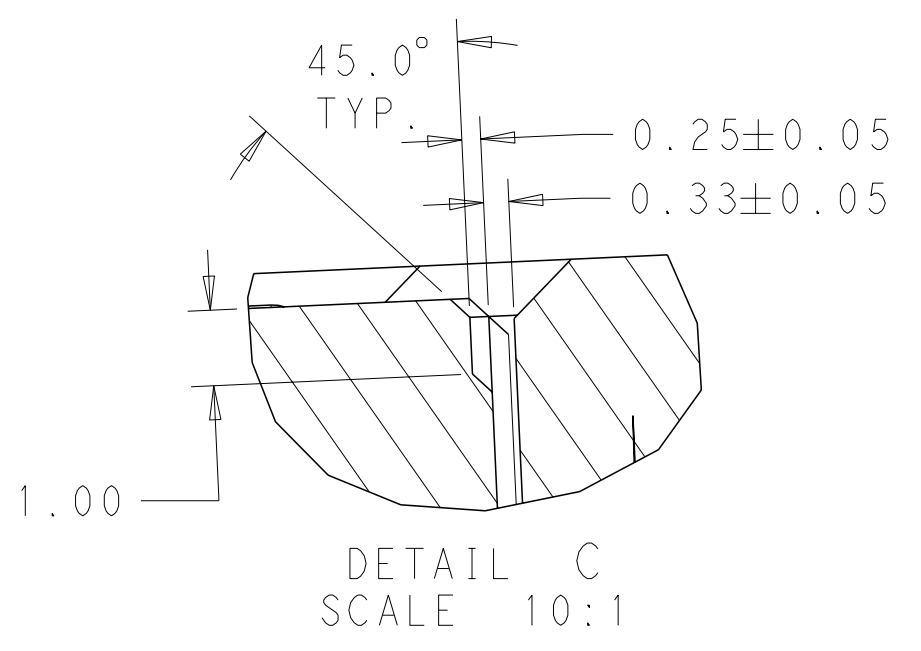
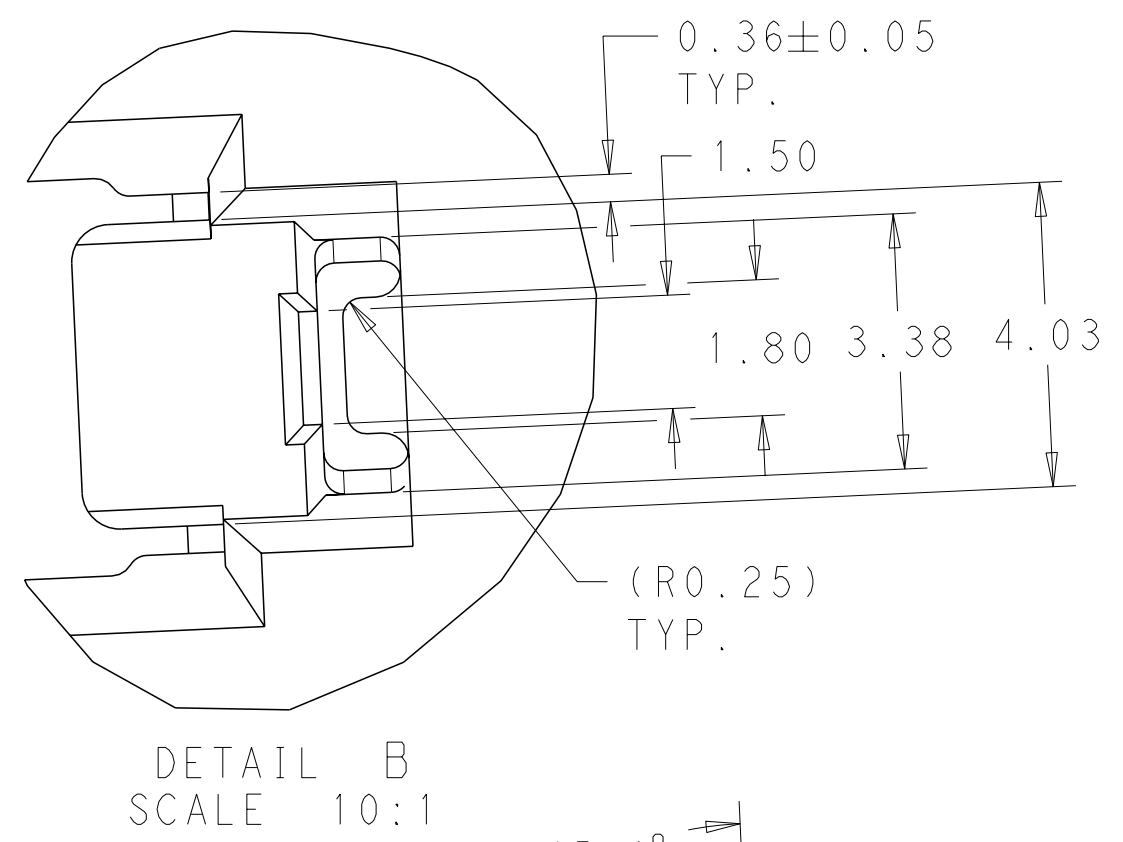
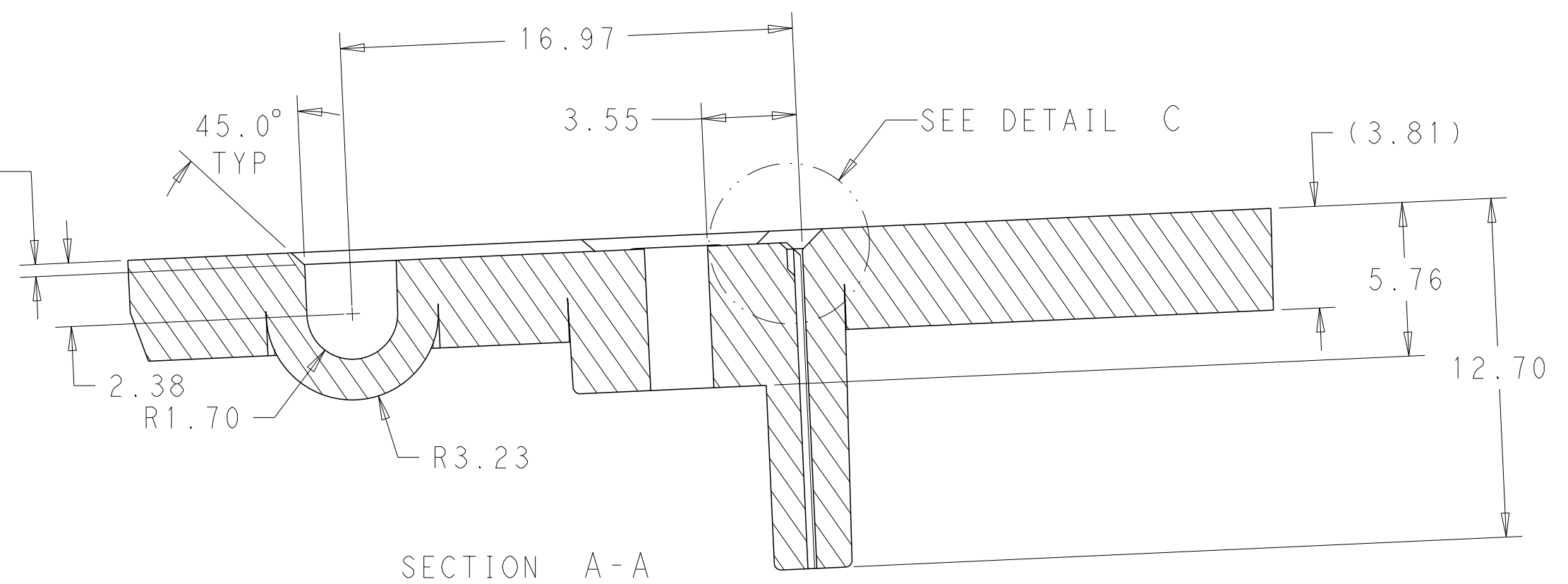
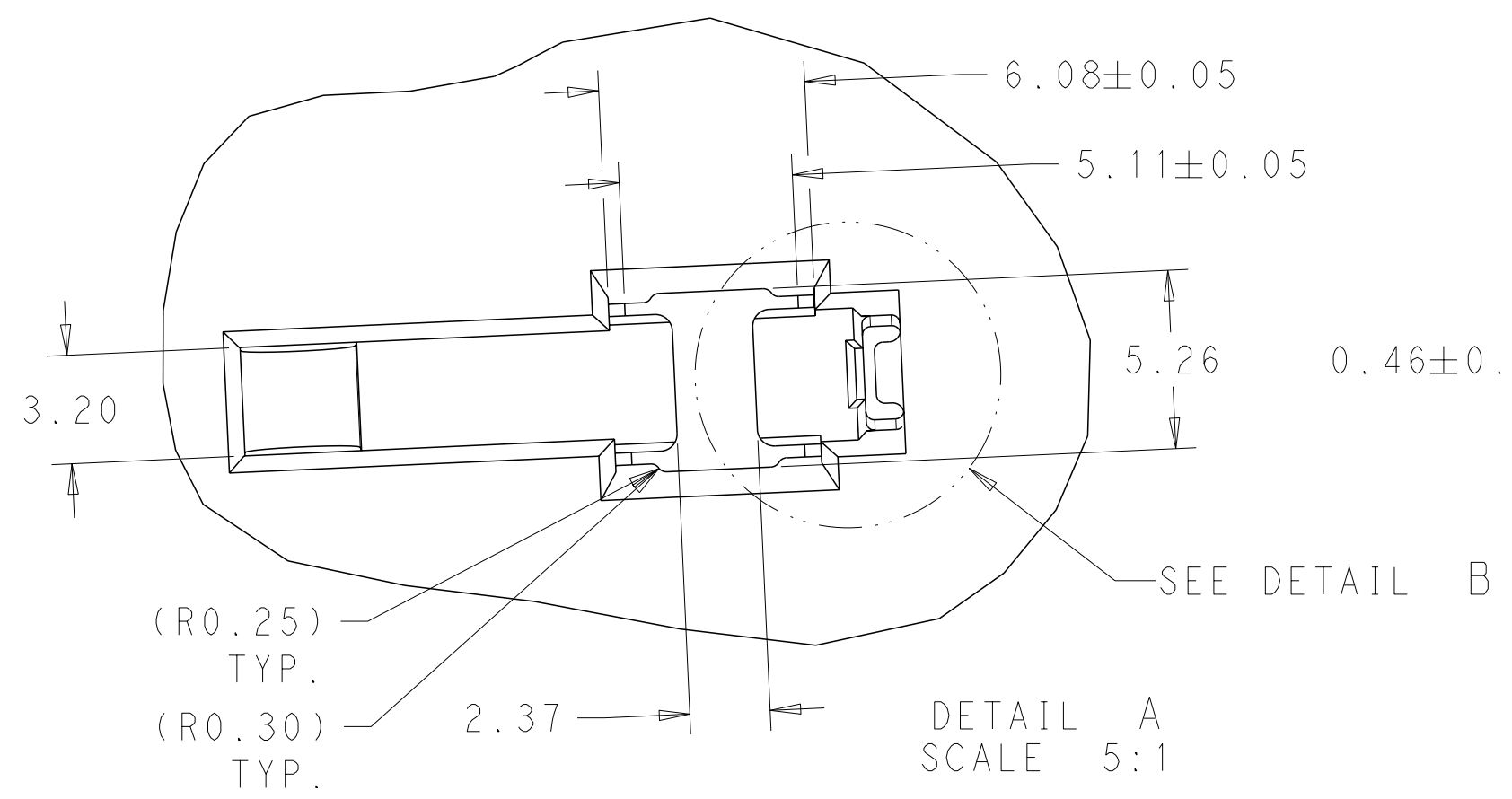
PHOTOCELL BRUSH CONTACT LOCATIONS AS SHOWN



| | | | | |
|--|--|----------------------------|--|--|
| THIS DRAWING IS A CONTROLLED DOCUMENT. | | DWN J. SHAFFER 26 JUN 2013 | TE Connectivity | |
| DIMENSIONS: mm | | CHK E. HOWARD 26 JUN 2013 | | |
| TOLERANCES UNLESS OTHERWISE SPECIFIED: | | APVD E. HOWARD 26 JUN 2013 | NAME DIMMABLE PHOTOCONTROL BRUSH CONTACT | |
| 0 PLC ±- | | PRODUCT SPEC - | SIZE A200779 C-2213365 | |
| 1 PLC ±- | | APPLICATION SPEC - | RESTRICTED TO - | |
| 2 PLC ±0.13 | | WEIGHT - | SCALE 1:1 SHEET 3 OF 4 REV A1 | |
| 3 PLC ±- | | Customer Drawing | | |
| 4 PLC ±- | | | | |
| ANGLES ±- | | | | |
| FINISH - | | | | |

THIS DRAWING IS UNPUBLISHED. RELEASED FOR PUBLICATION 20
 © COPYRIGHT 20 BY - ALL RIGHTS RESERVED.

| LOC | | DIST | | REVISIONS | | | |
|-----|-----|-------------|------|-----------|------|--|--|
| P | LTR | DESCRIPTION | DATE | DWN | APVD | | |
| - | - | SEE SHEET 1 | - | - | - | | |



SUGGESTED BRUSH CONTACT POCKET
 DETAIL AS SHOWN

PARTIAL VIEW X
 SCALE 7:1

SECTION C-C

| | | | | |
|---|--|----------------------------------|--|------------------------|
| THIS DRAWING IS A CONTROLLED DOCUMENT. | | DWN J. SHAFFER 26 JUN 2013 | TE Connectivity | |
| DIMENSIONS: mm | | CHK E. HOWARD 26 JUN 2013 | | |
| TOLERANCES UNLESS OTHERWISE SPECIFIED: | | APVD E. HOWARD 26 JUN 2013 | NAME DIMMABLE PHOTOCONTROL BRUSH CONTACT | |
| 0 PLC ± 1 PLC ± 2 PLC ±0.13 3 PLC ± 4 PLC ± ANGLES ± FINISH ± | | PRODUCT SPEC - | SIZE A200779 | CAGE CODE C-2213365 |
| MATERIAL - | | APPLICATION SPEC - | DRAWING NO - | RESTRICTED TO - |
| | | WEIGHT - | Customer Drawing | |
| | | SCALE 1:1 | SHEET 4 | OF 4 |
| | | REV A1 | | |