

NOTES1:

- UL Standard
 1. Rated voltage/current : 300V / 30A
 2. Withstanding voltage : AC1600V/1Min.
 3. Torque value : M3 , 4.43Lb.in
 4. Wire range : 30~10AWG

IEC Standard

1. Pollution degree	2	2	3
Overvoltage category	II	III	III
Rate impulse voltage(kV)	6kV	6kV	6kV
Rate voltage(V)	1000V	1000V	690V
Rate current(A)	32A		

2. Torque value : M3 , 0.5N.m
 3. Wire range : 0.2~4.0mm²/6mm²(sol)

NOTES2:

1. Dimension shall be interpreted per ASME Y14.5-2009
 2. Pitch : 9.52mm, Poles : N=02~16P
 3. Stripping length : 8~9mm
 4. Operating temperature: -40°C~+105°C
 5. Undimensioned tolerances:

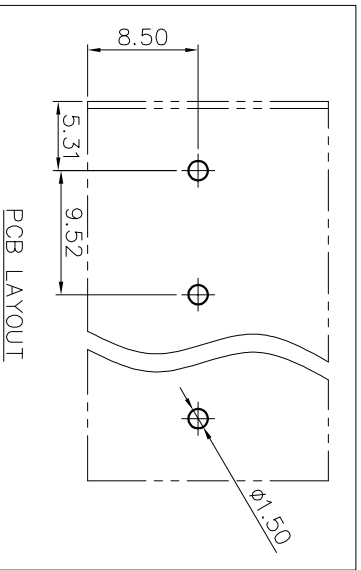
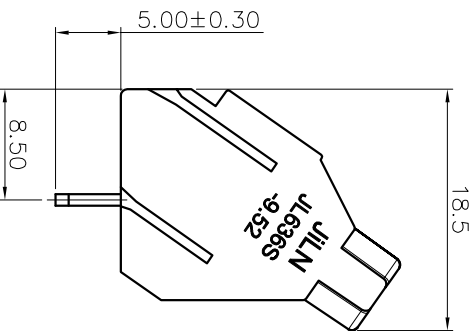
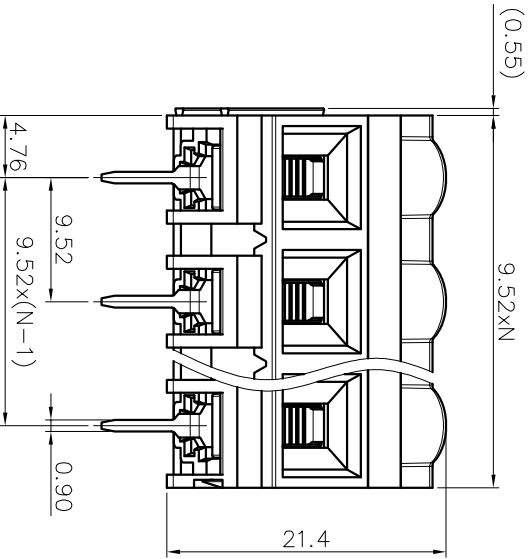
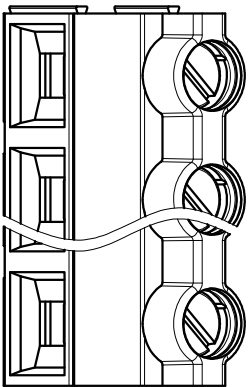
Pitch range in mm		Nominal dimension range in mm		Tolerance	
Over 6	Over 10	Over 30	Over 60	Over 100	Over 150
TO 6	TO 10	TO 30	TO 60	TO 100	TO 150
6	10	24	30	60	100
					150
				±2'	

6. RoHS Compliance

Ordering Information

JL636S - 952 XX G 0 1

Pitch 952=9.52PH
 No. of pins 2P, 3P, 4P~24P
 Housing Color B=Black, G=Green, U=Blue, R=Red, W=White, Y=Yellow, D=Orange, E=Grey
 Packing 0=Pe bag, T=Tube, A=Tray



REVISION RECORD			
REV	ECN	DESCRIPTION	DRFT DATE
A		新发行	Z.S.P 22.6.24

DRAW	SHUANGPING ZHENG	SCALE	FIT	<p>JIN 东莞市锦凌电子有限公司 DONGGUAN JINLING ELECTRONIC CO., LTD</p>
CHECK	LICHAD LIU	UNIT	mm	
APPROVE	YONGLIANG GAO	SIZE	A4	
		SHEET	1/1	PART NO.
		PRD		JL636S-952XXG01
TITLE:				JL636S-9.52-XXP螺钉式端子台/绿色