

NOTES1:

- UL Standard
- 1. Rated voltage/current : 300V / 30A
- 2. Withstanding voltage : AC1600V/1Min.
- 3. Torque value : M3 , 4.43Lb.in
- 4. Wire range : 30~10AWG

IEC Standard

1. Pollution degree	2	2	3
Overvoltage category	II	III	III
Rate impulse voltage(kV)	6kV	6kV	6kV
Rate voltage(V)	1000V	630V	500V
Rate current(A)	32A		

- 2. Torque value : M3 , 0.5N.m
- 3. Wire range : 0.2~4.0mm²/6mm²(sol)

NOTES2:

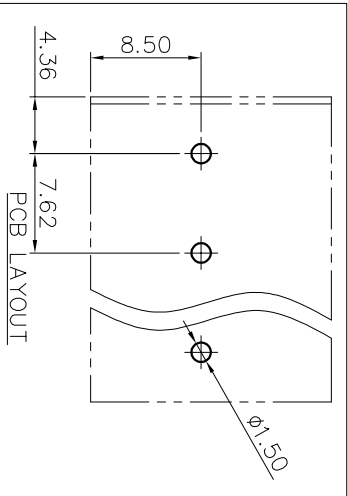
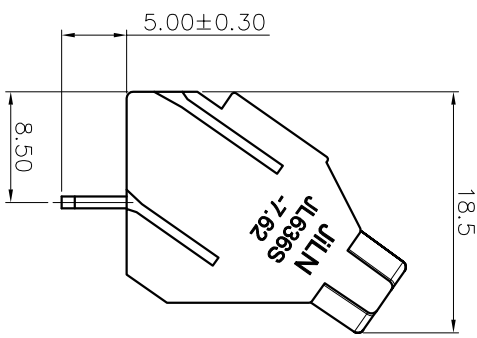
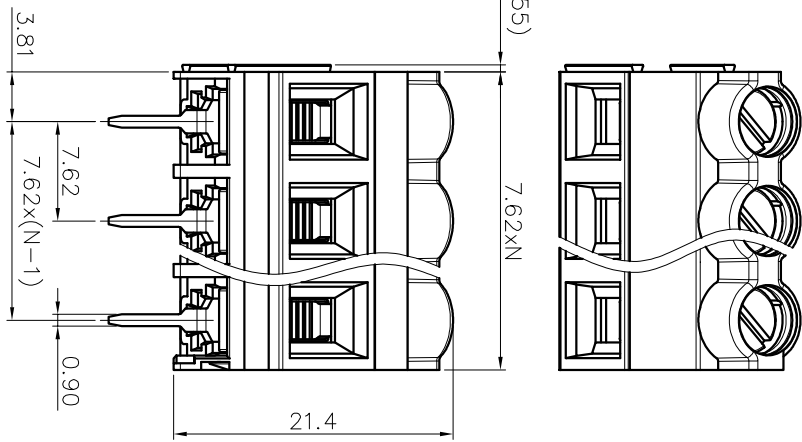
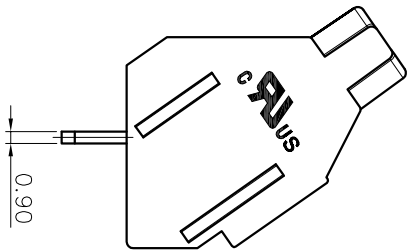
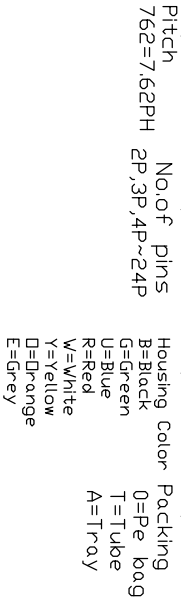
- 1. Dimension shall be interpreted per ASME Y14.5-2009
- 2. Pitch : 7.62mm, Poles : N=02~16P
- 3. Stripping length : 8~9mm
- 4. Operating temperature: -40°C~+105°C
- 5. Undimensioned tolerances:

Pitch range in mm		Nominal dimension range in mm		Tolerance	
Over	TO	Over	TO	Over	TO
6	10	30	60	100	150
±0.15	±0.20	±0.30	±0.50	±0.70	±1.00
				±1.30	±2'

6. RoHS Compliance

Ordering Information

JL636S - 762 XX G 0 1



REVISION RECORD			
REV	ECN	DESCRIPTION	DATE
A		新发行	Z.S.P 22.6.24

DRAW	SHUANGPING ZHENG	SCALE	FIT
CHECK	LICHAD LIU	UNIT	mm
APPROVE	YONGLIANG GAO	SIZE	A4
		SHEET	1/1
		PRD	

<p>JILIN 东莞市锦凌电子有限公司 DONGGUAN JINLING ELECTRONIC CO., LTD</p>	
PART NO.	JL636S-762XXG01
TITLE:	JL636S-7.62-XXP螺钉式端子台/绿色