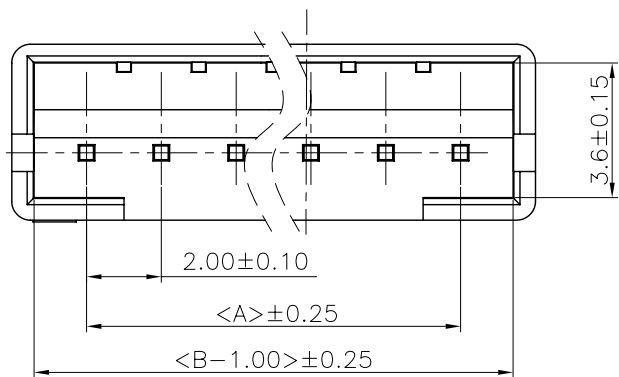
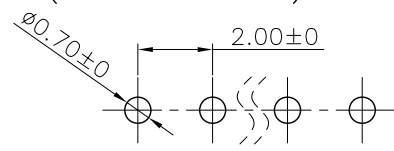


REV.	ECN NO.	DESCRIPTION	DATE	DESIGN

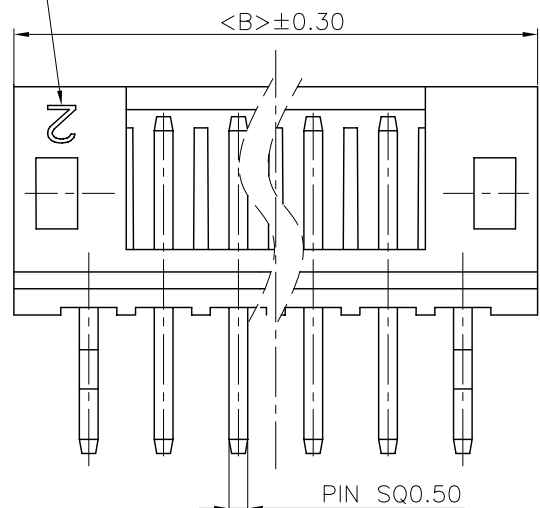


Recommended P.C.B Layout(Top Side)  
P.C.B Thickness = 1.20mm  
(Tolerance=±0.05)

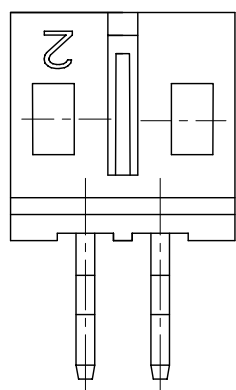


Specifications:  
Current rating:2A AC/DC.  
Voltage rating:100V AC/DC  
Temperature range:-40°C~+105°C.  
Contact resistance:10mΩ Max.  
Insulation resistance:1000MΩ Min.  
Withstanding voltage: 800V AC/minute.  
Material:PA66.UL94V-0.

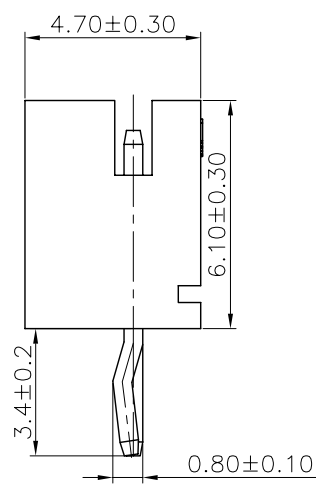
模穴号 1.2.3...



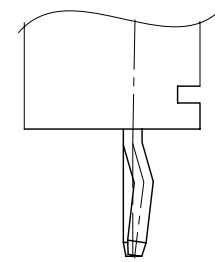
2 PIN 以上图示



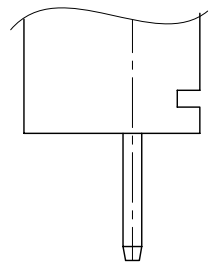
2 PIN 图示



打反“K”



打正“K”



无“K”

PART NO.	Dimensions	
	A	B
A2001WV-02P	2.00	6.00
A2001WV-03P	4.00	8.00
A2001WV-04P	6.00	10.00
A2001WV-05P	8.00	12.00
A2001WV-06P	10.00	14.00
A2001WV-07P	12.00	16.00
A2001WV-08P	14.00	18.00
A2001WV-09P	16.00	20.00
A2001WV-10P	18.00	22.00
A2001WV-11P	20.00	24.00
A2001WV-12P	22.00	26.00
A2001WV-13P	24.00	28.00
A2001WV-14P	26.00	30.00
A2001WV-15P	28.00	32.00
A2001WV-16P	30.00	34.00

**CNJM** Joint More Precision electronics Co.,Led.

DRAW NO.		DATE	P/N NO:	DRAW NAME:
DESIGN:	陈雪峰	17/06/03	A2001WV-NP	2.0mm pitch 180° Wafer
CHECK:	杨 辉			
REVIEW:			REV. A/1	SCALE 1:1
			UNIT: mm	SHEET: 1 OF 1

DIM	TOL	DIM	TOL
X.	/	X'	/
X.X	±0.25	X.X'	±2'
X.XX	±0.20	X.XX'	±1'
X.XXX	±0.10	X.XXX'	/