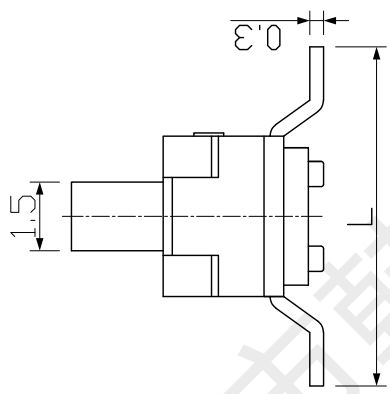
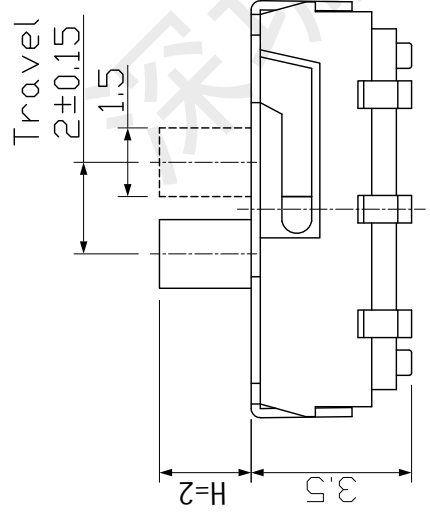
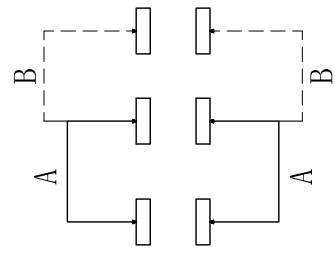


1 2 3 4 5 6



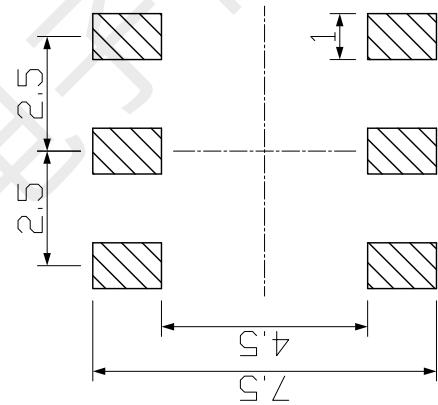
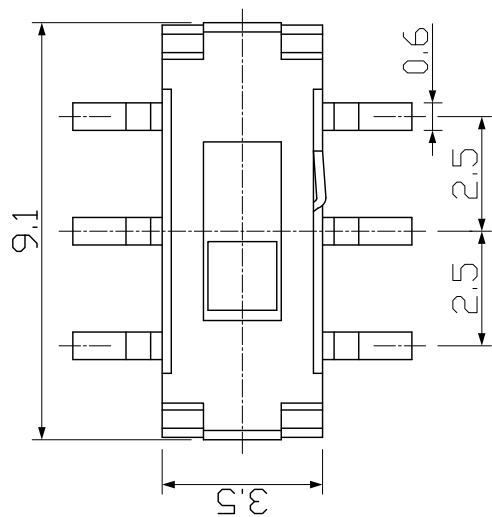
|     |     |
|-----|-----|
| L   | H   |
| 6.9 | 1.7 |
| /   | 2.0 |
| 7.4 | 3.0 |
|     | 4.0 |

电路简图  
SCHEMATIC



- 1、工作电压 Working Voltage: 12V DC;
- 2、工作电流 Working Current: 0.1A;
- 3、接触电阻 Contact Resistance:  $\leq 100m\Omega$ ;
- 4、绝缘电阻 Insulation Resistance:  $\geq 100M\Omega$ ;
- 5、动作力 Press Force:  $200\pm 30gf$ ;
- 6、寿命 Life: >10,000次。

印制线路板  
Recommended P.C.B layout



|                 |    |          |       |        |
|-----------------|----|----------|-------|--------|
| 5               | 盖板 | SUS      | ---   | ---    |
| 4               | 推柄 | PA46     | 黑色    | ---    |
| 3               | 簧片 | 镀铜       | ---   | 表面镀银   |
| 2               | 底座 | PA46     | 黑色    | ---    |
| 1               | 端子 | H62Y     | ---   | 表面镀银   |
| NO. DESCRIPTION |    | MATERIAL | COLOR | REMARK |



|                   |                |      |     |    |
|-------------------|----------------|------|-----|----|
| 名稱<br>TITLE       | 六脚拨动立式贴片       |      |     |    |
| 型號<br>TYPE NO.    | MST22D18G2 125 |      |     |    |
| 圖號<br>DRAWING NO. |                |      |     |    |
| SCALE             | 1:1            | UNIT | mm  | 視角 |
| 批准                | 罗孝金            | 审核   | 钟华华 | 设计 |
| 繪圖員               | 李春风            | DRAW |     |    |

|                          |            |            |                   |              |              |                                |                        |                                |                        |        |     |     |
|--------------------------|------------|------------|-------------------|--------------|--------------|--------------------------------|------------------------|--------------------------------|------------------------|--------|-----|-----|
| 工程變更通知單<br>ECN (DCN) NO. | 版次<br>REV. | 日期<br>DATE | 說明<br>DESCRIPTION | 改變<br>CHANGE | 審核<br>APPRO. | 角<br>度                         | 尺寸<br>公差               | 角<br>度                         | 尺寸<br>公差               | DESIGN | 設計  | 繪圖員 |
|                          |            |            |                   |              |              | $\pm 2^\circ$<br>$\pm 1^\circ$ | $\pm 0.5$<br>$\pm 0.3$ | $\pm 2^\circ$<br>$\pm 1^\circ$ | $\pm 0.5$<br>$\pm 0.3$ | APPRO. | 李春风 | 李春风 |
|                          |            |            |                   |              |              | $\pm 0.5^\circ$<br>$\pm 0.1$   | $\pm 0.1$              | $\pm 0.5^\circ$<br>$\pm 0.1$   | $\pm 0.1$              | CHECK  | 钟华华 | 钟华华 |
|                          |            |            |                   |              |              | 一般公差                           |                        | 一般公差                           |                        | APPRO. | 罗孝金 | 罗孝金 |

1 2 3 4 5 6



深圳市韩下电子有限公司

Shenzhen Hanxia Electronic Co., Ltd  
Tel: 0755-33819206 Fax: 0755-27597491

# 承 认 书

## SPECIFICATION FOR APPROVAL

客 户 Customer:

\_\_\_\_\_

产品名称 Project:

拨动开关

\_\_\_\_\_

规格型号 Part No:

HX MST22D18G2

\_\_\_\_\_

### 贵公司承认印 Approval signatures

| 料 号/Part No. | 签 章/Signatures |
|--------------|----------------|
|              |                |

日期 Date:

|             |     |  |
|-------------|-----|--|
| 拟制/Drawn    | 李春风 |  |
| 审核/Check    | 钟华华 |  |
| 批准/Approved | 罗孝金 |  |



## SPECIFICATION 规格书

|   |  |   |  |
|---|--|---|--|
| 1: GENERAL SPECIFICATION 基本事项           |  |   |  |
| 1.1                                     | RATING (额定值): DC 12V 0.1A  |   |  |
| 1.2                                     | PRACTICAL TEMPERATURE RANGE: -25°C~+70°C<br>使用温度范围: 在-25°C~+70°C范围内使用.   |   |  |
| 1.3                                     | STANDARD ATMOSPHERIC CONDITIONS :<br>UNLESS OTHERWISE SPECIFIED, THE STANDARD RANGE OF ATMOSPHERIC CONDITIONS FOR MAKING MEASUREMENTS AND TESTS ARE AS FOLLOWS:<br>(1) AMBIENT TEMPERATURE : 5°C TO 35°C;<br>(2) RELATIVE HUMIDITY : 45% TO 85%;<br>(3) AIR PRESSURE : 86Kpa TO 106Kpa.<br>测试标准状态: 在没有指定的情况下测试温度, 湿度, 气压如下:<br>(1) 温度为5~35°C; (2) 湿度为45%~85%; (3) 气压为86Kpa~106Kpa. |   |  |
| 2. ELECTRICAL CHARACTERISTICS (电气性能规格): |  |   |  |
|   | ITEM 项目  | TEST CONDITIONS 测试条件  | PERFORMANCE (DATA) 规格(数据)  |
| 2.1                                     | CONTACT RESISTANCE<br>接触电阻   | MEASURED AT 1KHz SMALL CURRENT(100 mA OR LESS) 在1KHz微小电流(100mA 以下)测试.   | 100mΩ MAX.<br>100毫欧以下.   |
| 2.2                                     | INSULATION RESISTANCE<br>绝缘电阻  | APPLY A VOLTAGE OF 500V DC FOR 1 MIN.<br>THE FOLLOWING CONTACT TEST METHOD:<br>(1) BETWEEN BODY AND CONDUCTOR.<br>(2) BETWEEN CONDUCTORS NOT TO BE CONTACT.<br>输入500V DC电压1分钟, 按以下接触方法测试:<br>(1) 接触端子之间.<br>(2) 胶座体和排脚之间.                         | 100MΩ MIN.<br>100兆欧以上.   |
| 2.3                                     | ELECTRIC STRENGTH<br>耐电压   | AC 500V(50-60Hz) FOR 1 MIN TRIP CURRENT:0.5mA<br>THE FOLLOWING CONTACT TEST METHOD:<br>(1) BETWEEN TERMINALS.<br>(2) BETWEEN INDIVIDUAL TERMINALS AND FRAME.<br>输入AC500V(50-60Hz) 电压, 1分钟感度电流为0.5mA,<br>接触测试方法如下:<br>(1) 接触端子之间.<br>(2) 外壳体和排脚之间. | WITHOUT DAMAGE TO PARTS ARCING OR BREAKDOWN ETC.<br>没有绝缘破坏等异常  |
| 3. MECHANICAL CHARACTERISTICS (机械性能规格): |  |   |  |
|   | ITEM 项目  | TEST CONDITIONS 测试条件  | PERFORMANCE (DATA) 规格(数据)  |
| 3.1                                     | OPERATION FORCE<br>动作力   | LATERAL PUSH (侧向推动)   | PUSH FORCE (推动力度)<br>:200gf ± 30gf   |
| 3.2                                     | TRAVEL TO CLOSURE<br>动作行程  | IN THE HORIZONTAL DIRECTION SWITCH HANDLE OPERATION, WITH AN EQUAL TO 2TIMES THE THRUST OF THE SWITCH FROM ONE POSITION TO THE NEXT GEAR, MOVING DISTANCE MEASURING HANDLE.<br>在开关推柄运行的水平方向, 以一个等于2倍推力使开关从一个档位运动到下一档位, 测量推柄的移动距离.                 | 2mm ± 0.15mm   |
| 3.3                                     | STEM STRENGTH<br>操作部(柄)强度  | AND ALONG THE RUNNING DIRECTION AT APEX HANDLE(500gf) ON THE STRENGTH TEST, TIME IS 30SECONDS.<br>在推柄的先端沿运行方向加上(500gf)力度测试, 时间为30秒.   | THERE SHALL BE NO DAMAGE ON APPEARANCE MECHANICAL AND ELECTRICAL CHARACTERISTICS SHALL BE SATISFIED 外观无异常, 满足于机械, 电气性能 |



| 4. DURABILITY (耐久性) : |                              |  |  |
|-----------------------|------------------------------|--|--|
| ITEM 项目               |                              | TEST CONDITIONS 测试条件   | PERFORMANCE (DATA) 规格 (数据)   |
| 4.1                   | LIFE TEST<br>寿命试验            | AN ACTUATOR SHALL BE WITH A THRUST OF NO GREAT THAN 1 TIMES SWITH POWER TO 10000 CYCLES AT A SPEED OF 30 CYCLES FOR 1 MIN.<br>操作者以每分钟30次的频率，施加不大于开关1倍的推力做 10000 次无负荷测试.  | 1) CONTACT RESISTANCE SHALL BE 50mΩ MAX.<br>2) LIFETIME: 10000 次<br>1) 接触电阻不超于50mΩ.<br>2) 寿命: 10000次                   |
| 4.2                   | HEAT TEST<br>耐热实验            | THE SWITCH SHALL BE STORED AT A TEMPERATURE OF 85±2°C FOR 96 HOURS. AND THEN IT SHALL BE SUBJECTED TO THE CONTROLLED RECOVERY CONDITIONS FOR 1 HOUR AFTER WHICH MEASUREMENT SHALL BE MADE.<br>放置在温度85±2°C中96小时后，再放置正常室温中1小时后测定.                    | THERE SHALL BE NO DAMAGE ONAPPEARANCE MECHANICAL AND ELECTRICAL CHARACTERISTICS SHALL BE SATISFIED<br>外观无异常，满足于机械，电气性能 |
| 4.3                   | COLD TEST<br>耐冷实验            | THE SWITCH SHALL BE STORED AT A TEMPERATURE OF-25±3°C FOR 96 HOURS. AND THEN IT SHALL BE SUBJECTED TO THE CONTROLLED RECOVERY CONDITIONS FOR 1 HOUR AFTER WHICH MEASUREMENT SHALL BE MADE.<br>放置在温度-25±3°C中96小时后，再放置正常室温中1小时后测定.                   |  |
| 4.4                   | HUMIDITY TEST<br>潮湿实验        | THE SWITCH SHALL BE STORED AT A TEMPERATURE OF 40±2°C AND A HUMIDITY OF 80% TO 85% FOR 96 Hr. THEN THE JACK SHALL BE MAINTAINEDAT STANDARD ATMOSPHERIC CONDITION FOR 1 Hr FOR OTHER PROCEDURES.<br>放置在40±2°C相对湿度为80~85%环境中96小时后，再将样品放在正常室温中1小时后测定. |  |
| 4.5                   | SOLDERING CONDITIONS<br>焊锡条件 | HAND SOLDERING 手焊：<br>1) DIVCE 工具：SOLDER IRON 电烙铁.<br>A. 350°C MAX. , 2 sec Max<br>B. 270°C MAX. , 4 sec Max   |  |
|                       |                              |  |  |