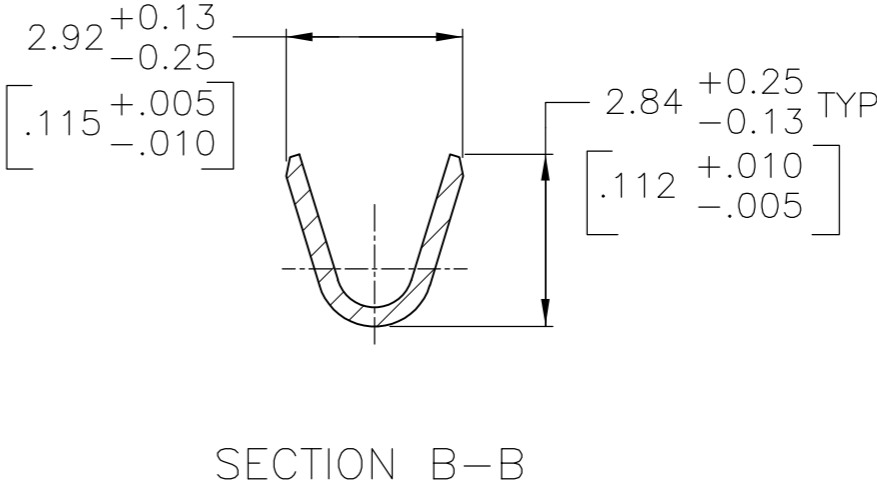
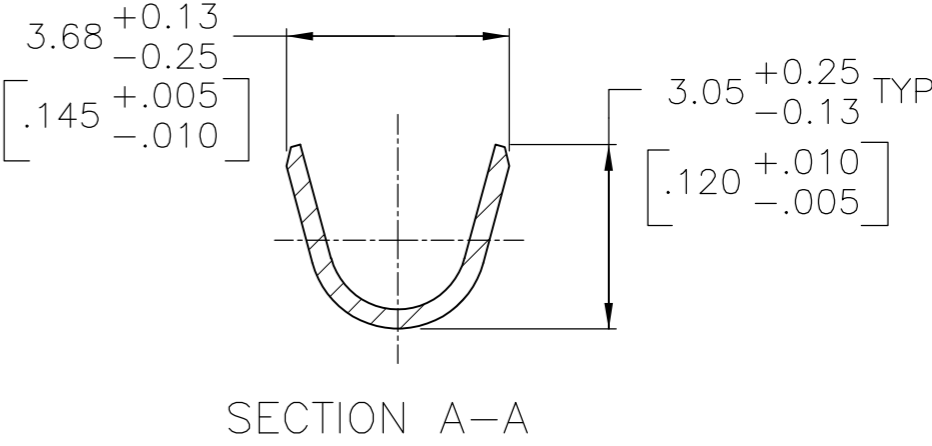


REVISIONS					
P	LTR	DESCRIPTION	DATE	DWN	APVD
	F3	REVISED PER ECO-16-004223	16JUL2016	NK	MZ

- 8 0.38µm [.000015] MIN GOLD PER MIL-G-45204 ON MATING END FOR A LENGTH OF 5.08 [.200] MIN, 1.27µm [.000050] MIN TIN-LEAD PER MIL-T-10727 ON OPPOSITE END FOR A LENGTH OF 5.69 [.224] MIN, BOTH OVER 1.27µm [.000050] MIN NICKEL PER QQ-N-290.
- 9 1.27µm [.000050] MIN TIN PER MIL-T-10727 OVER 1.27µm [.000050] MIN NICKEL PER QQ-N-290.



OBSOLETE SUPERSEDED BY 66099-3	SMALL PACK	9	1-66098-8 OR 1-66098-9	1-66099-6
	STANDARD	9	1-66098-8 OR 1-66098-9	1-66099-5
	SMALL PACK	1	66098-4	1-66099-4
	SMALL PACK	3	66098-3	1-66099-3
	SMALL PACK	5	66098-2	1-66099-2
	SMALL PACK	2	66098-1	<del>1-66099-1</del>
	STANDARD	8	1-66098-6	<del>1-66099-0</del>
	STANDARD	1	66098-4	66099-4
	STANDARD	3	66098-3	66099-3
	STANDARD	5	66098-2	66099-2
	STANDARD	2	66098-1	66099-1
PACKAGING TYPE		CONTACT FINISH	STRIP P/N REF	PART NO

THIS DRAWING IS A CONTROLLED DOCUMENT.		DWN 05/29/92	TE Connectivity	
DIMENSIONS: mm [INCHES]		L.SIPE 6-11-92		
TOLERANCES UNLESS OTHERWISE SPECIFIED:		CHK W.LENKER	NAME	
0 PLC ± -		APVD G.STEINHAUER 7-7-92		
1 PLC ± -		PRODUCT SPEC	PIN ASSEMBLY, LOOSE PIECE, TYPE III+	
2 PLC ± 0.13 [.005]		APPLICATION SPEC		
3 PLC ± -		—	SIZE	CAGE CODE
4 PLC ± -		—	A2	00779
ANGLES ± -		WEIGHT	—	DRAWING NO
FINISH		CUSTOMER DRAWING	—	RESTRICTED TO
SEE CALLOUTS		SCALE 8:1	SHEET 1 OF 1	REV F3