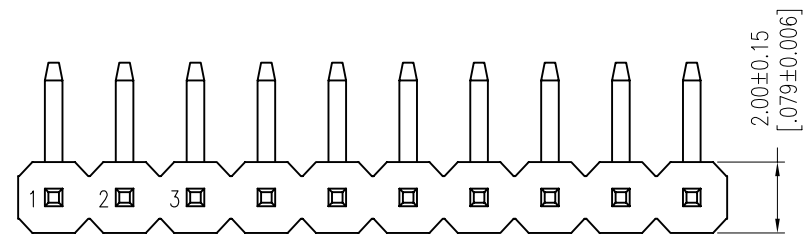


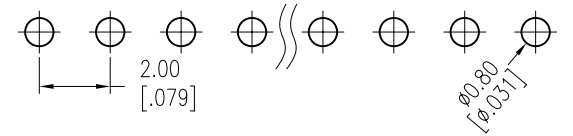
REV.	ECN. NO.	APPD.
A		

NOTES:  
 Rated Current:2.0AMP.  
 Contact Resistance:20mΩ Max.  
 Withstand Voltage:500V AC/DC  
 Insulation Resistance:1000MΩ Min.  
 Operation Temperature:-40°C to +105°C

Contact Material:Brass  
 Contact Plating:Au or Sn Over Ni  
 Insulator Material:PA9T+30%G.F UL94V-0 BK

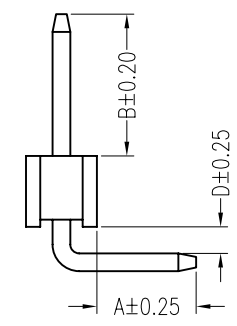
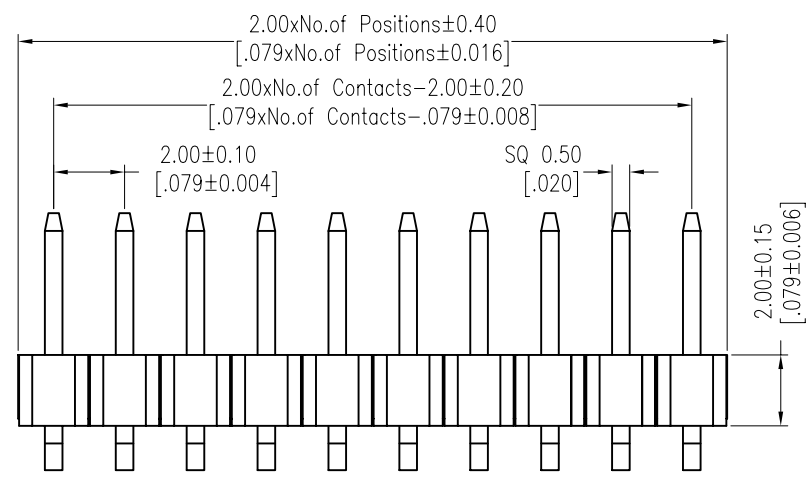
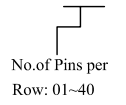


Recommended P.C.B Layout (Top Side)  
 (PCB BOARD TOLERANCE±0.05)



### Ordering Information

MTP220-11XXR1



Item	Pin Length	A	D	B	Mating
Standard	10.50	2.80	0.75	4.00	2240 2243 2263 2272
Alternate					

X. ± 0.30	X.° ± 5°	UNITS mm	NAME(INTENDED USE)	MINTRON CO.,LTD.				
.X ± 0.20	.X° ± 2°	MAT'L			PART NO.(INTENDED USE)	TITLE: MTP220-11XXR1		
.XX ± 0.10	.XX° ± 1°	FINISH					APPD: SUNNY	DWG NO.:
.XXX ± 0.05	.XXX° ± 0.5°	Q'TY						
PIN HEADER CONNECTOR			DR: ZOE	2006-11-28				
					SCALE 1/1	SHEET 1/1		