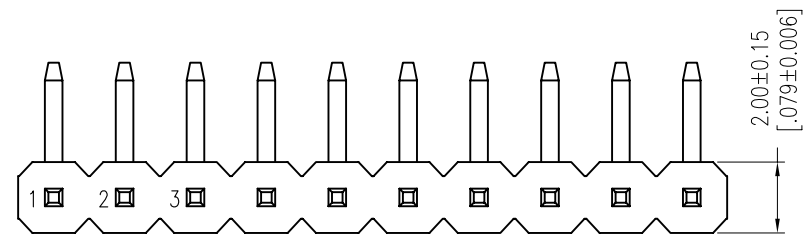


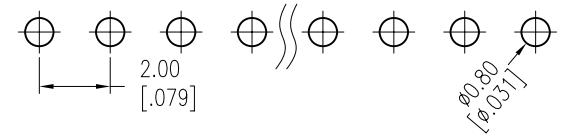
REV.	ECN. NO.	APPD.
A		

NOTES:
 Rated Current:2.0AMP.
 Contact Resistance:20mΩ Max.
 Withstand Voltage:500V AC/DC
 Insulation Resistance:1000MΩ Min.
 Operation Temperature:-40°C to +105°C

Contact Material:Brass
 Contact Plating:Au or Sn Over Ni
 Insulator Material:PA9T+30%G.F UL94V-0 BK

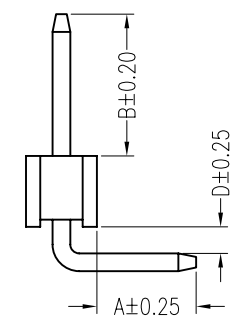
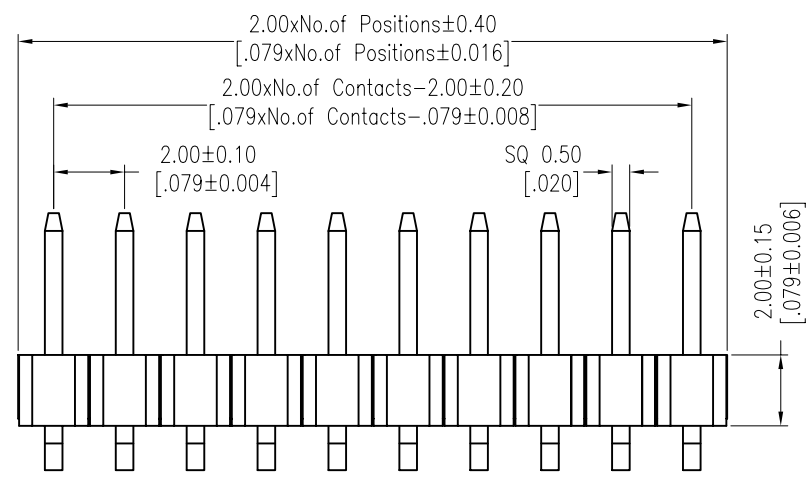


Recommended P.C.B Layout (Top Side)
 (PCB BOARD TOLERANCE±0.05)

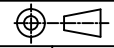


Ordering Information

MTP220-11XXR1



Item	Pin Length	A	D	B	Mating
Standard	10.50	2.80	0.75	4.00	2240 2243 2263 2272
Alternate					

X. ± 0.30	X.° ± 5°	UNITS mm	NAME (INTENDED USE)	MINTRON CO.,LTD.			
.X ± 0.20	.X° ± 2°				MAT'L	PART NO. (INTENDED USE)	TITLE: MTP220-11XXR1
.XX ± 0.10	.XX° ± 1°	FINISH	APPD: SUNNY	DWG NO.:			
.XXX ± 0.05	.XXX° ± 0.5°		CHKD: LISA				
PIN HEADER CONNECTOR		Q'TY	DR: ZOE		SCALE 1/1	SHEET 1/1	REV. A
					2006-11-28		