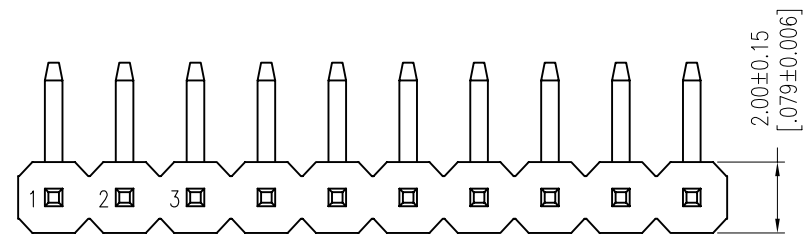


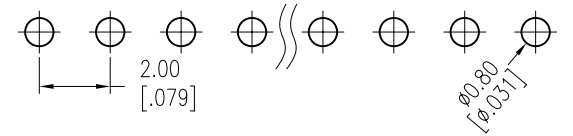
|      |          |       |
|------|----------|-------|
| REV. | ECN. NO. | APPD. |
| A    |          |       |

NOTES:  
 Rated Current:2.0AMP.  
 Contact Resistance:20mΩ Max.  
 Withstand Voltage:500V AC/DC  
 Insulation Resistance:1000MΩ Min.  
 Operation Temperature:-40°C to +105°C

Contact Material:Brass  
 Contact Plating:Au or Sn Over Ni  
 Insulator Material:PA9T+30%G.F UL94V-0 BK

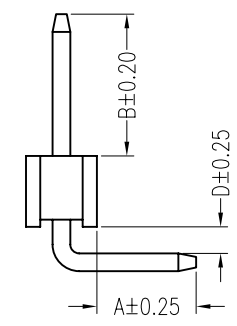
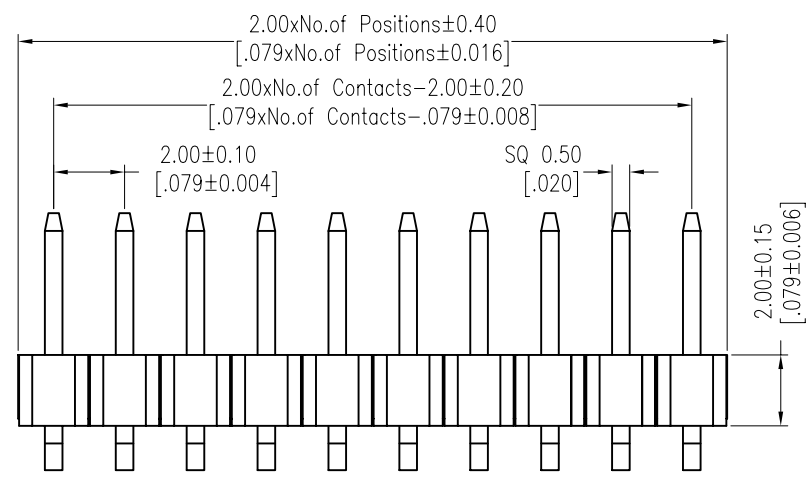
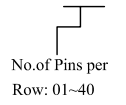


Recommended P.C.B Layout (Top Side)  
 (PCB BOARD TOLERANCE±0.05)



## Ordering Information

MTP220-11XXR1



| Item      | Pin Length | A    | D    | B    | Mating              |
|-----------|------------|------|------|------|---------------------|
| Standard  | 10.50      | 2.80 | 0.75 | 4.00 | 2240 2243 2263 2272 |
| Alternate |            |      |      |      |                     |

|                      |              |          |                    |                  |                        |                         |        |
|----------------------|--------------|----------|--------------------|------------------|------------------------|-------------------------|--------|
| X. ± 0.30            | X.° ± 5°     | UNITS mm | NAME(INTENDED USE) | MINTRON CO.,LTD. |                        |                         |        |
| .X ± 0.20            | .X° ± 2°     | MAT'L    |                    |                  | PART NO.(INTENDED USE) | TITLE:<br>MTP220-11XXR1 |        |
| .XX ± 0.10           | .XX° ± 1°    | FINISH   | APPD: SUNNY        | DWG NO.:         |                        |                         |        |
| .XXX ± 0.05          | .XXX° ± 0.5° | Q'TY     | CHKD: LISA         |                  |                        |                         |        |
| PIN HEADER CONNECTOR |              |          | DR: ZOE 2006-11-28 |                  | SCALE 1/1              | SHEET 1/1               | REV. A |