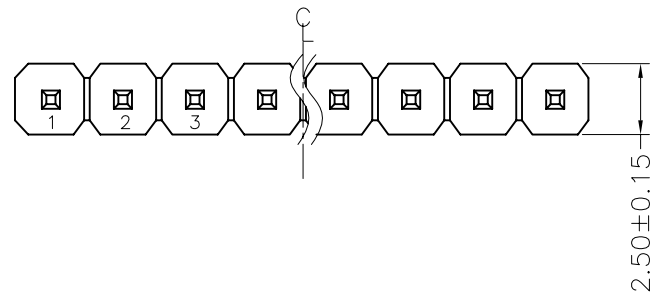


| | | |
|------|----------|-------|
| REV. | ECN. NO. | APPD. |
| A | | |

NOTES:
 Current Rating:3.0AMP
 Contact Resistance:20mΩ max
 Withstand Voltage:500V AC/DC
 Insulation Resistance:1000MΩ min
 Operation Temperature:-40°C to +105°C

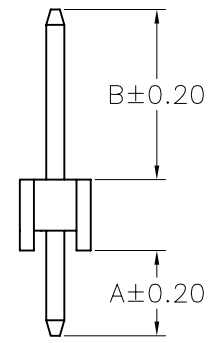
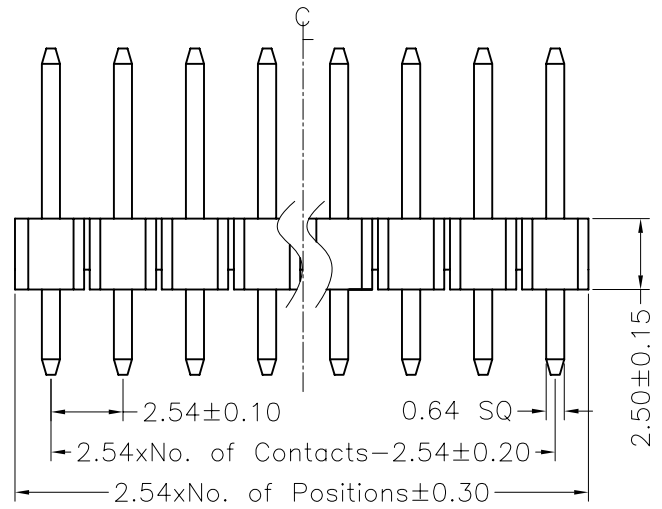
Contact Material:Brass
 Contact plating:Au or Sn Over Ni
 Insulator Material:PBT or PA6T+30%GF(UL94V-0)

Recommended P.C.B Layout(Top Side)
 (PCB BOARD TOLERANCE±0.05)

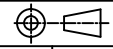


MTP125-11XXS1- X

No.of Pins per Row: 01~40
 Colour
 R : red
 Y : yellow
 W : white
 G : green
 B : blue



| Dimension antitheses list | | |
|---------------------------|------|------|
| ITEM | A | B |
| Standard | 3.00 | 6.00 |
| Alternate | | |

| | | | | | | | |
|----------------------|--------------|----------|---|------------------|--------|---------------------------|-------------|
| X. ± 0.30 | X.° ± 5° | UNITS mm | NAME(INTENDED USE) | MINTRON CO.,LTD. | | | |
| .X ± 0.20 | .X° ± 2° | | | | MAT'L | TITLE: MTP125-11XXS1-X | |
| .XX ± 0.10 | .XX° ± 1° | | | | FINISH | | APPD: SUNNY |
| .XXX ± 0.05 | .XXX° ± 0.5° | | | | Q'TY | | |
| PIN HEADER CONNECTOR | | | DR: ZOE 2006-11-28 | DWG NO.: | | | |
| | | |  | | | | |
| | | | SCALE 1/1 | SHEET 1/1 | | | |
| | | | REV. A | | | | |