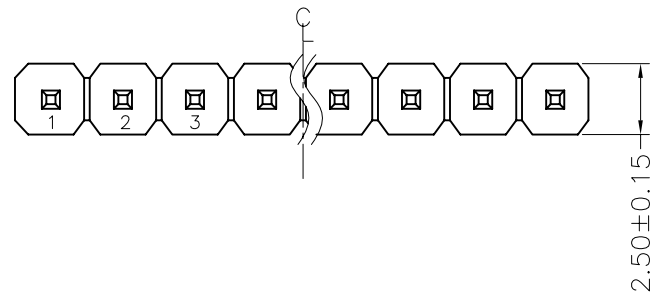


REV.	ECN. NO.	APPD.
A		

NOTES:
 Current Rating:3.0AMP
 Contact Resistance:20mΩ max
 Withstand Voltage:500V AC/DC
 Insulation Resistance:1000MΩ min
 Operation Temperature:-40°C to +105°C

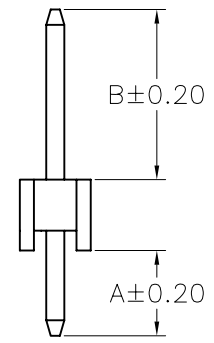
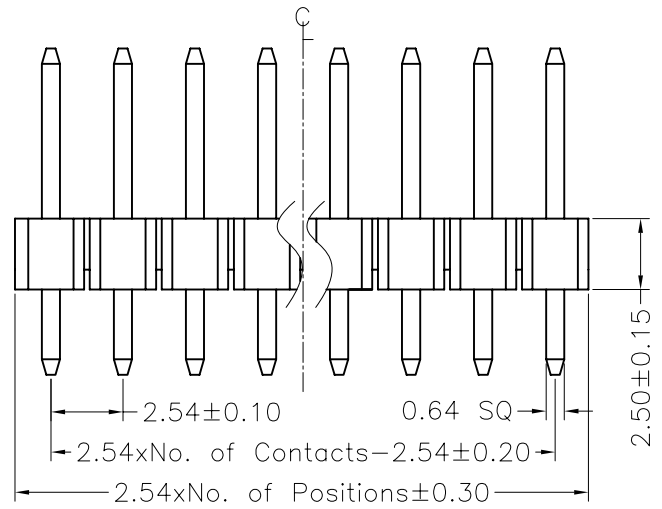
Contact Material:Brass
 Contact plating:Au or Sn Over Ni
 Insulator Material:PBT or PA6T+30%GF(UL94V-0)

Recommended P.C.B Layout(Top Side)
 (PCB BOARD TOLERANCE±0.05)

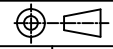


MTP125-11XXS1- X

No.of Pins per Row: 01~40
 Colour
 R : red
 Y : yellow
 W : white
 G : green
 B : blue



Dimension antitheses list		
ITEM	A	B
Standard	3.00	6.00
Alternate		

X. ± 0.30	X.° ± 5°	UNITS mm	NAME(INTENDED USE)	MINTRON CO.,LTD.						
.X ± 0.20	.X° ± 2°				MAT'L	TITLE: MTP125-11XXS1-X				
.XX ± 0.10	.XX° ± 1°				FINISH		APPD: SUNNY			
.XXX ± 0.05	.XXX° ± 0.5°				Q'TY			CHKD: LISA		
PIN HEADER CONNECTOR			DR: ZOE 2006-11-28	DWG NO.:						
			 <table border="1"> <tr> <td>SCALE</td> <td>SHEET</td> <td>REV.</td> </tr> <tr> <td>1/1</td> <td>1/1</td> <td>A</td> </tr> </table>		SCALE	SHEET	REV.	1/1	1/1	A
SCALE	SHEET	REV.								
1/1	1/1	A								