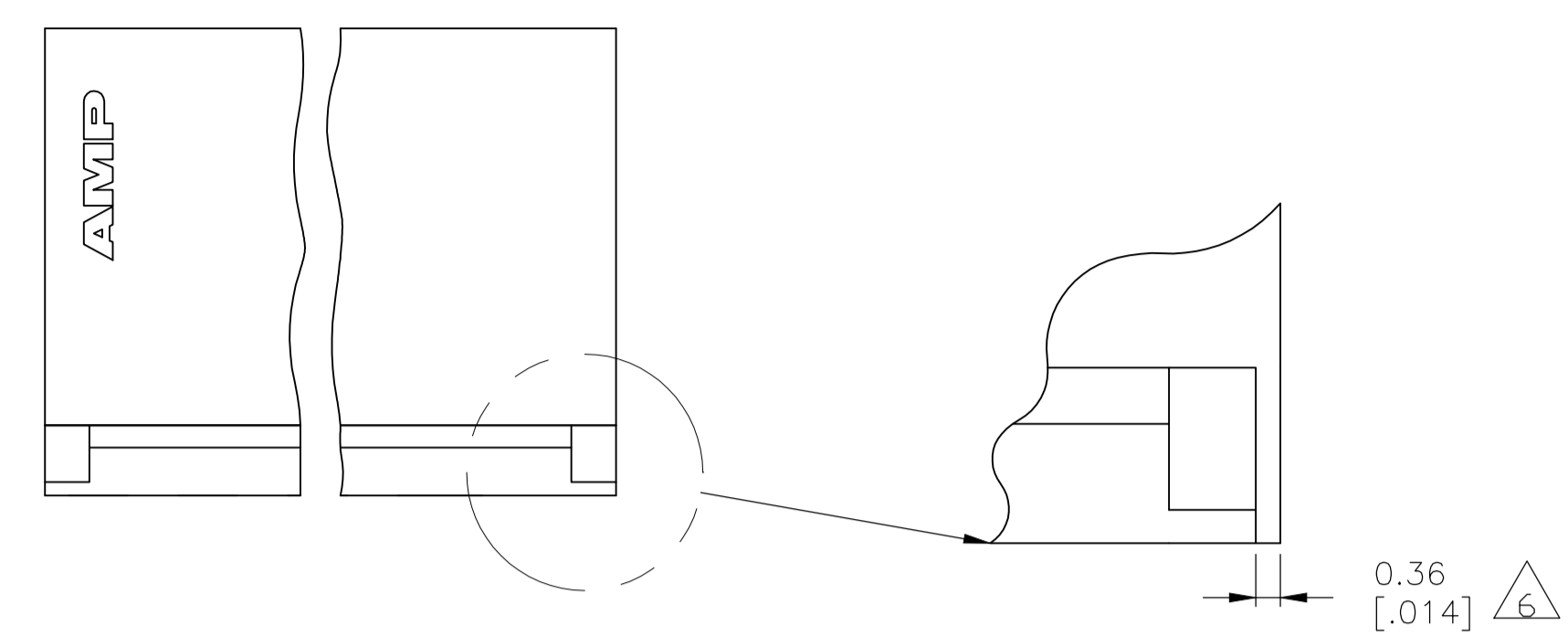


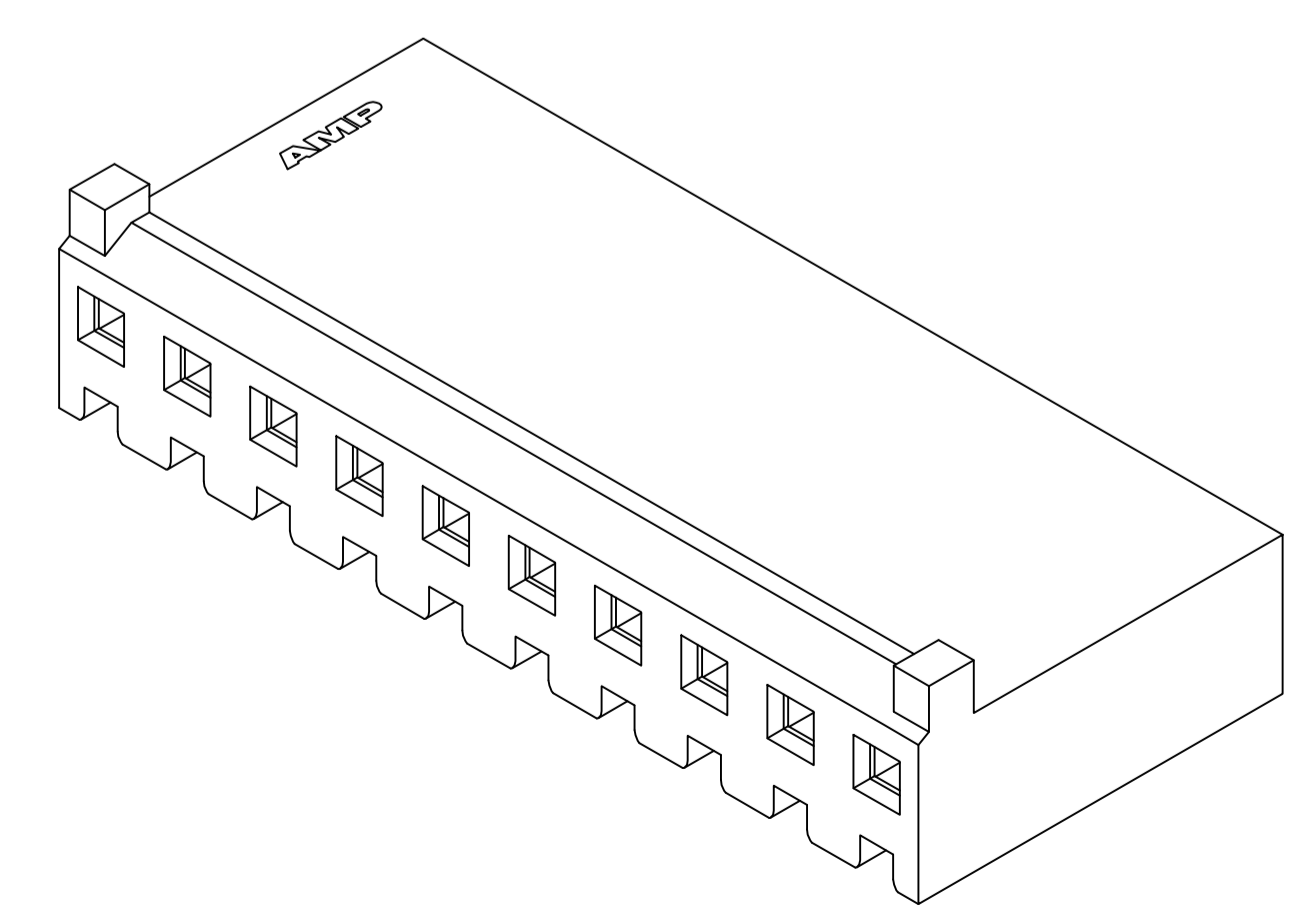
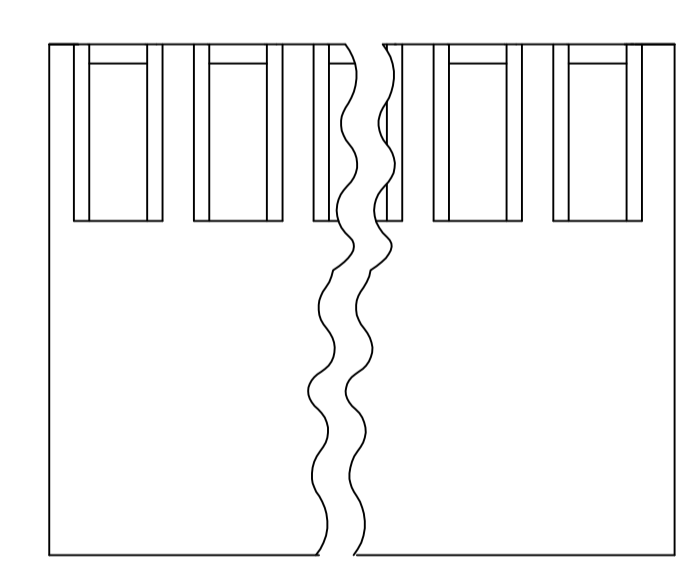
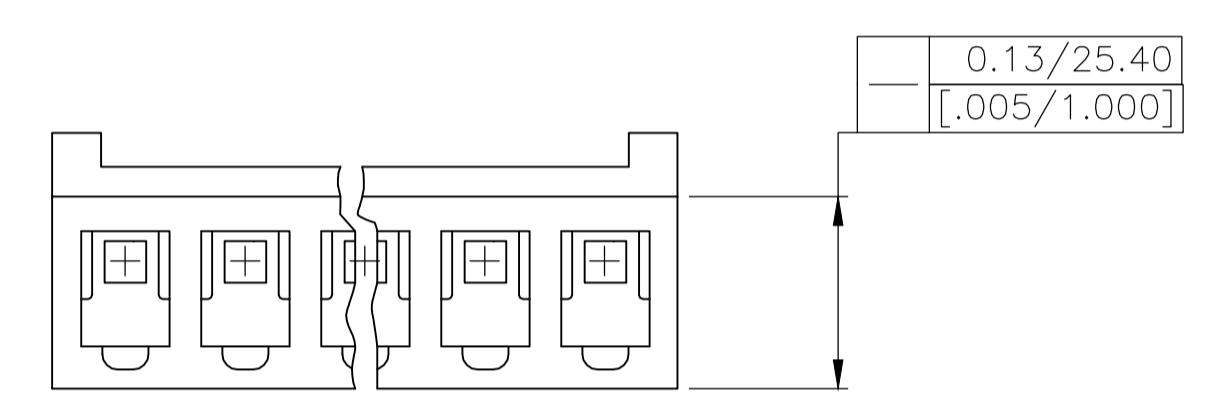
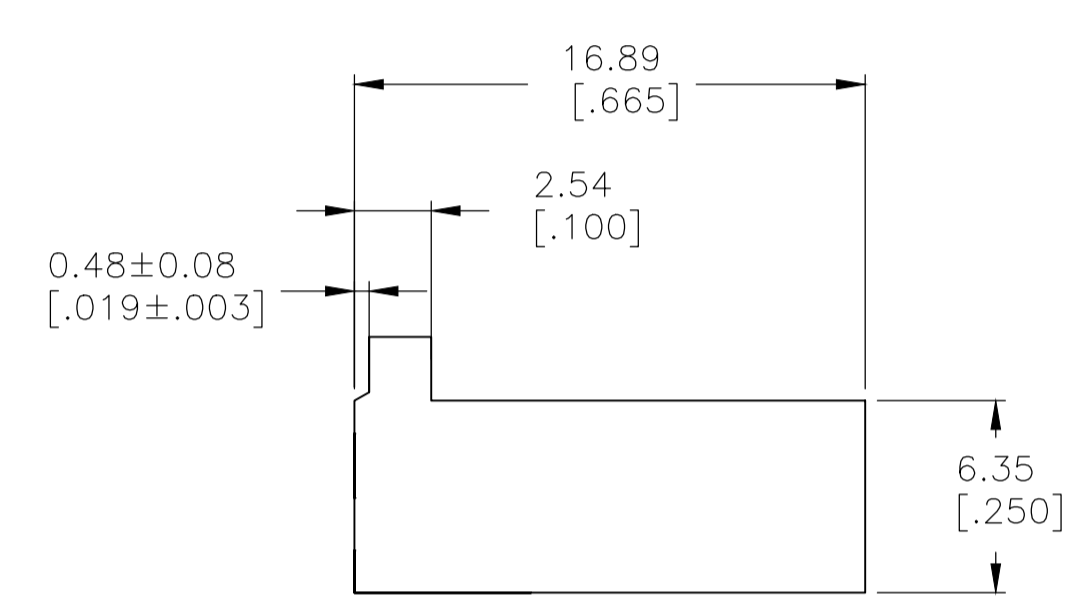
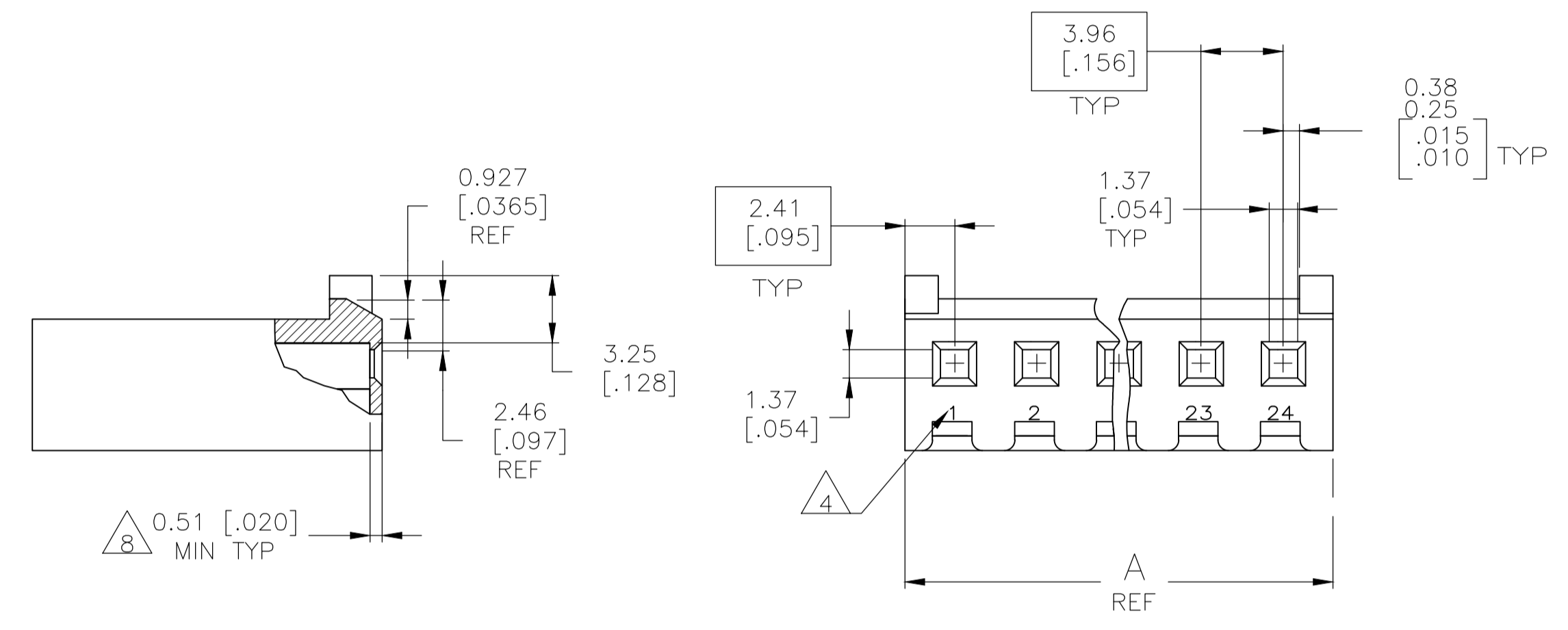
| REVISIONS | | | | |
|-----------|-------------|---------------|-----------|--------|
| P | LTR | DESCRIPTION | DATE | APPD |
| C1 | REVISED PER | ECR-18-005503 | 30MAY2018 | BDA SG |



SCALE 10:1

- 1 UNIT ACCEPTS 1.14 [.045] SQUARE OR ROUND POST.
- 2 UNIT ACCEPTS STANDARD SL-156 CONTACTS.
- 3 UNIT ACCEPTS KEYING PLUG 640254-1 AND KEYING PIN 640255-1.
- 4 CIRCUIT I.D. NUMBER(S), TO BE LOCATED SEQUENTIALLY AS SHOWN.
- 5 DIMENSIONS IN BRACKETS ARE IN INCHES.
- 6 OPTIONAL CONSTRUCTION (BOTH CORNERS) UP TO 0.38 [.015] FOR P/N -1 THRU -5, UP TO 1.27 [.050] FOR P/N -6 THRU 2--4.
- 7 ACCEPTS UP TO .110 INCH INSULATION WIRE.
- 8 MEETS UL61800-5-1

| Flam | RTIe deg C | HWI | HAI | CTI |
|------|------------|------|------|------------|
| V0 | 120C | PLC4 | PLC0 | PLC0_UL746 |



3-DIMENSIONAL MODEL NTS

| | | | |
|-------|---------|-----------------|-------------|
| 95.96 | [3.778] | 24 | 2-647402-4 |
| 92.00 | [3.622] | 23 | 2-647402-3 |
| 88.04 | [3.466] | 22 | 2-647402-2 |
| 84.07 | [3.310] | 21 | 2-647402-1 |
| 80.11 | [3.154] | 20 | 2-647402-0 |
| 76.15 | [2.998] | 19 | 1-647402-9 |
| 72.19 | [2.842] | 18 | 1-647402-8 |
| 68.22 | [2.686] | 17 | 1-647402-7 |
| 64.26 | [2.530] | 16 | 1-647402-6 |
| 60.30 | [2.374] | 15 | 1-647402-5 |
| 56.34 | [2.218] | 14 | 1-647402-4 |
| 52.37 | [2.062] | 13 | 1-647402-3 |
| 48.41 | [1.906] | 12 | 1-647402-2 |
| 44.45 | [1.750] | 11 | 1-647402-1 |
| 40.49 | [1.594] | 10 | 1-647402-0 |
| 36.53 | [1.438] | 9 | 647402-9 |
| 32.56 | [1.282] | 8 | 647402-8 |
| 28.60 | [1.126] | 7 | 647402-7 |
| 24.64 | [.970] | 6 | 647402-6 |
| 20.68 | [.814] | 5 | 647402-5 |
| 16.71 | [.658] | 4 | 647402-4 |
| 12.75 | [.502] | 3 | 647402-3 |
| 8.79 | [.346] | 2 | 647402-2 |
| 4.83 | [.190] | 1 | 647402-1 |
| DIM A | | NO. OF CIRCUITS | PART NUMBER |

THIS DRAWING IS A CONTROLLED DOCUMENT.

| | | | |
|----------------------------|--|-------------------------|-----------------------|
| DIMENSIONS: mm [INCHES] | TOLERANCES UNLESS OTHERWISE SPECIFIED: | DIN L. McEACHIN 28MAR00 | TE Connectivity Ltd. |
| 0 PLC ± - | 1 PLC ± - | CHK J. ELLIS 28MAR00 | APVD J. ELLIS 28MAR00 |
| 2 PLC ± - | 3 PLC ± 0.13 [.005] | NAME | PRODUCT SPEC |
| 4 PLC ± - | ANGLES ± 0° 30' | APPLICATION SPEC | SIZE CODE DRAWING NO |
| MATERIAL NYLON,UL94V-0,NAT | FINISH - | WEIGHT | A1 00779 C=647402 |
| CUSTOMER DRAWING | | SCALE 4:1 | SHEET 1 OF 1 REV C1 |