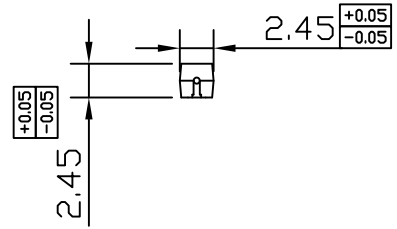
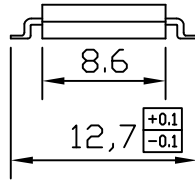
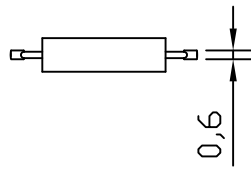


Unit:mm

客户



订购信息: Order Information

型号 Type	干簧管灵敏度 AT Range	触点方式 Contact Form
FRS-09A13SMDH0710		
		常开 (A)
注: 卷盘包装: 2500个/盘 @500pcs/reel		

卷盘包装尺寸

Dimensions for tape and reel

技术参数 SPECIFICATION

开关触点 Contact Form		常开 (A)
最大开关功率 Contact Rating - max.	W	10
最大开关电压 Switching Voltage - max.	V	100
最大开关电流 Switching Current - max.	A	0.5
最大载流电流 Carry Current - max.	A	0.5
最大接触电阻 Contact Resistance - max.	mΩ	150
最小击穿电压 Breakdown Voltage - min.	V	110/150
绝缘电阻 Insulation Resistance - min.	MΩ	10000
工作温度 Operating Temperature	°C	-40~105

深圳市法思特传感器有限公司
SHENZHEN FAST SENSOR CO., LTD.

TITLE
塑封贴片干簧管
Molded SMD Reed Switch

PART NO. FRS-09A13SMDH 系列
SCALE 2:1 REV. 00
www.szfast.com

Drawn by ZXL / 2016-01-01 Reviewed by LJ / 2016-01-01 Approved by LY / 2016-01-01