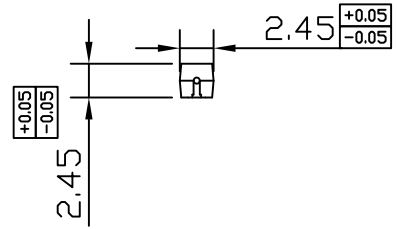
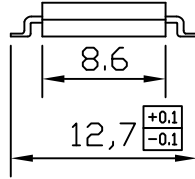
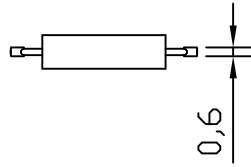


Unit:mm

客户



订购信息: Order Information

型号 Type	干簧管灵敏度 AT Range	触点方式 Contact Form
FRS-09A13SMDH0710		
		常开 (A)
注: 卷盘包装: 2500个/盘 @500pcs/reel		

卷盘包装尺寸

Dimensions for tape and reel

技术参数 SPECIFICATION

开关触点 Contact Form		常开 (A)	深圳市法思特传感器有限公司 SHENZHEN FAST SENSOR CO., LTD. TITLE 塑封贴片干簧管 Molded SMD Reed Switch		
最大开关功率 Contact Rating - max.	W	10			
最大开关电压 Switching Voltage - max.	V	100			
最大开关电流 Switching Current - max.	A	0.5			
最大载流电流 Carry Current - max.	A	0.5			
最大接触电阻 Contact Resistance - max.	mΩ	150			
最小击穿电压 Breakdown Voltage - min.	V	110/150	PART NO.	SCALE 2:1	REV. 00
绝缘电阻 Insulation Resistance - min.	MΩ	10000	FRS-09A13SMDH 系列 www.szfast.com		
工作温度 Operating Temperature	°C	-40~105	Drawn by ZXL / 2016-01-01	Reviewed by LJ / 2016-01-01	Approved by LY / 2016-01-01