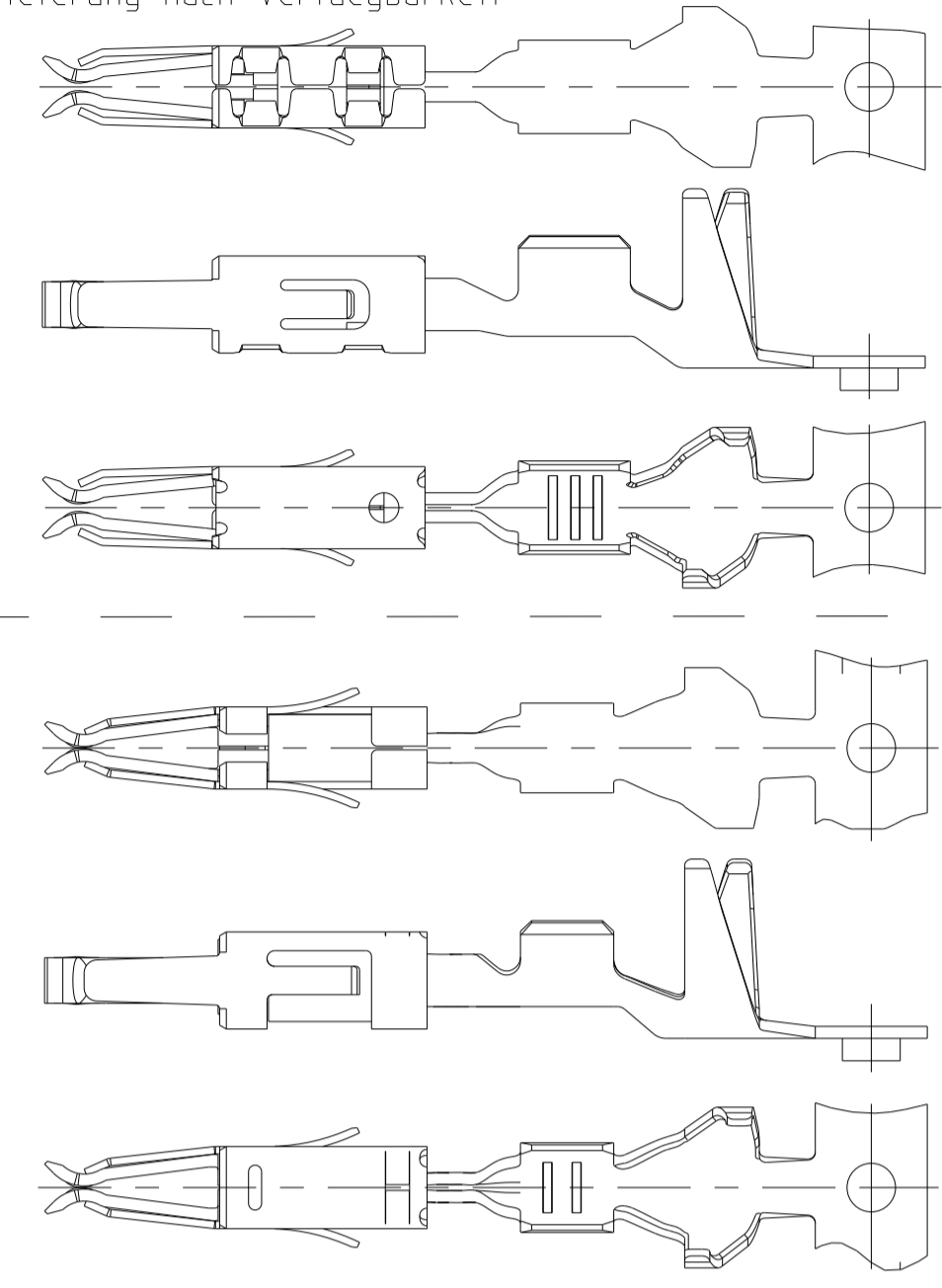


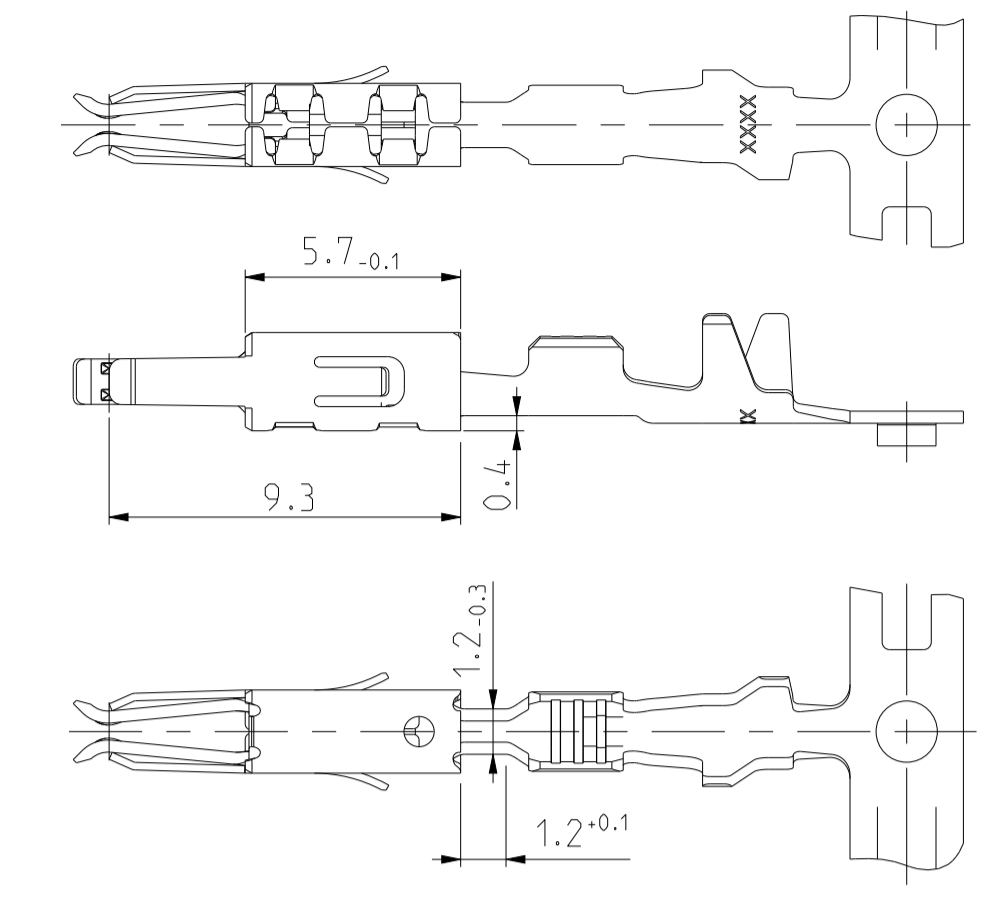
SPRING / Ueberfeder

DIFFERENT TOOL DETAILS
 Verschiedene Werkzeugausführungen
 FUNCTION AND HANDLING WITH
 ALL DETAILS CONTINUOUSLY
 Funktion und Handhabung
 bei allen Ausführungen gleich
 SUPPLY BASED ON AVAILABILITY
 Lieferung nach Verfügbarkeit

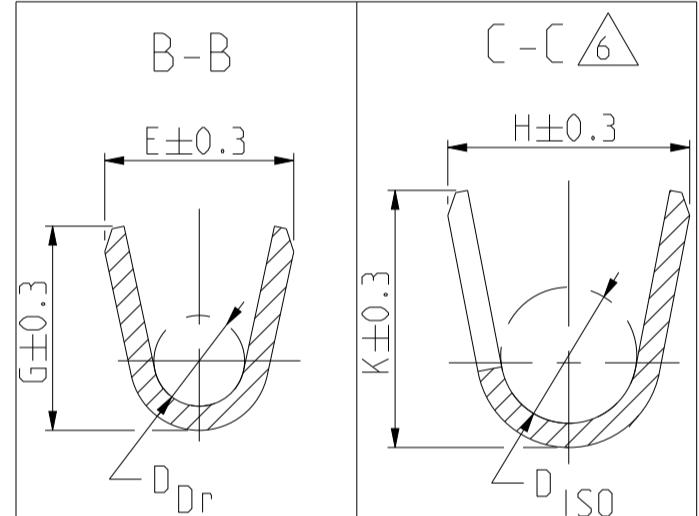
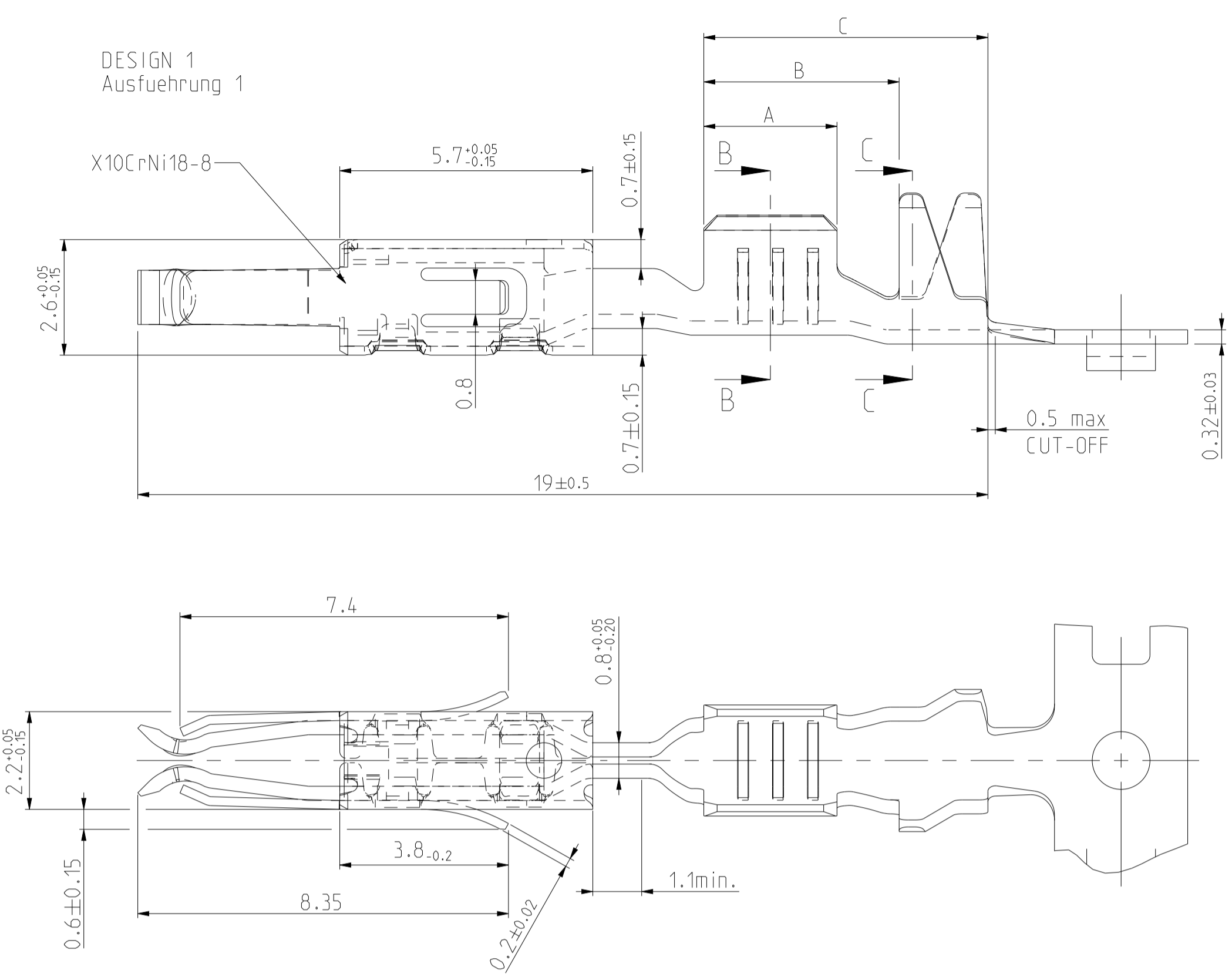
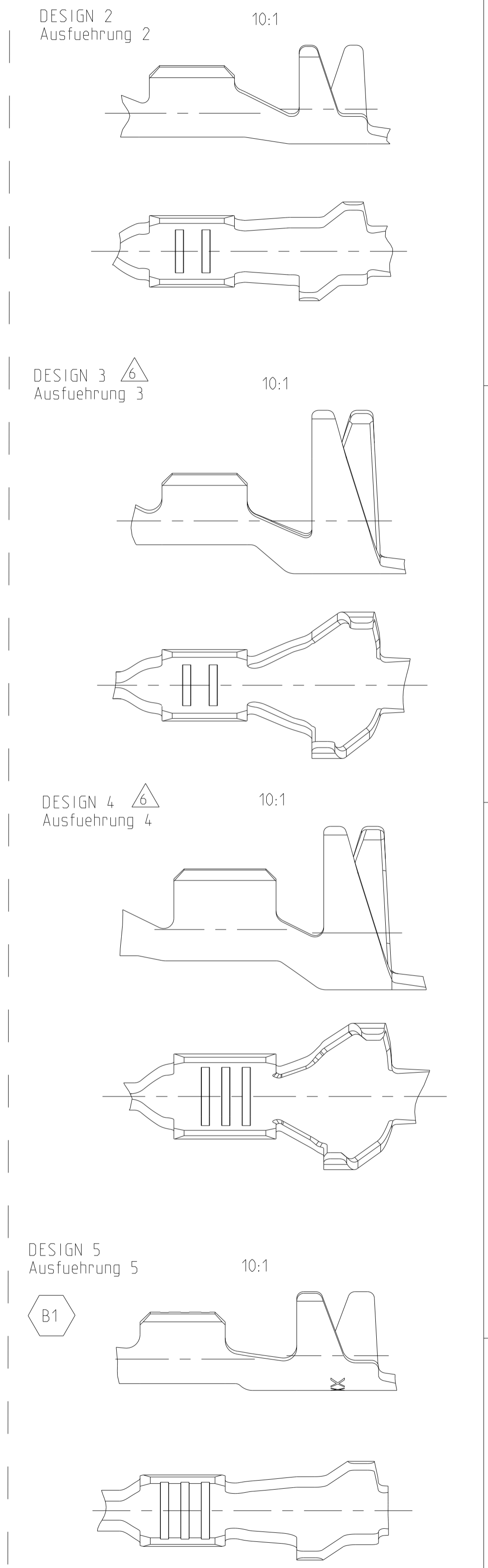


SPRING / Ueberfeder

USED ONLY FOR/ Nur verwendet fuer
 PN 965914
 PN 969022
 PN 968052



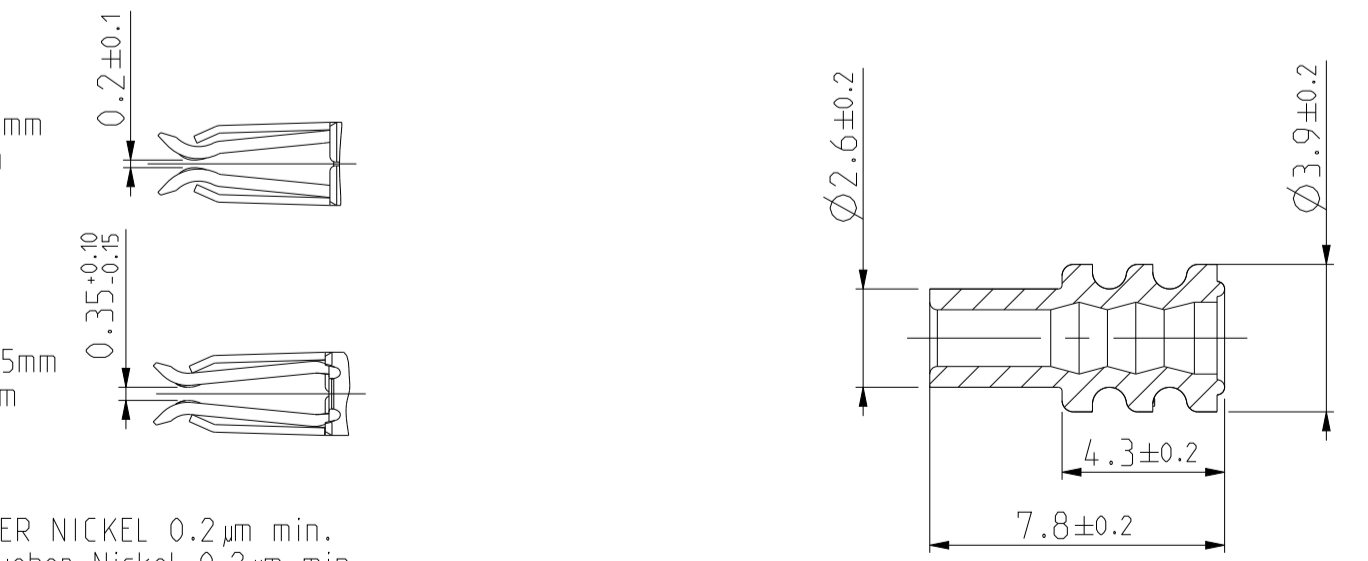
REVISIONS				
P	LTN	DESCRIPTION	DATE	APPV
A7		NEW CREO DRAWING	25.JUL.2014	Ho. Eder
A8		CORRECTED VIEW, ADDED NECK DIMENSION	03APR2018	JP JC
B		CORRECTED VIEWS ACC. PART CHANGES	09DEC12019	JB JC
B1		ADDED NEW DESIGN 5 APPLIED TO PN 965914	15APR2021	JCB RS



SINGLE WIRE SEAL/ Einzelichtungssystem	REV.	DESIGN Ausführung	MATERIAL Oberfläche	SURFACE Oberfläche	WIRE RANGE Drahtgrößen Bereich [mm ²]	INSULATION Isolations Ø [mm]	STRIP FROM WIRE CRIMP Drahtcrimp		A	B	C	CRIMP DATA AND CRIMP TOOL Crimpdata u. Crimptwerkzeuge	
							INSUL.-CRIMP Iso.-Crimp Bandware	CRIMP DIMENSION mm Crimpabmessungen mm					
SEAL/ Einzelichtungssystem	4-1241732-1	B	CuNiSi	5	0.5-1.0 FLR	1.4-2.0	E = 2.5 G = 2.7 D _{Dr} = 1.2	H = 4.3 K = 4.8 D _{ISO} = 2.7	3.0	4.4	6.4	SEE APPLICATION - SPECIFICATION siehe Verarbeitungsspezifikation 114-18081	
	1241732-2	B	CuFe 2	PRETINNED vorverzinnt	0.5-1.0 FLR	1.4-2.0	E = 2.5 G = 2.7 D _{Dr} = 1.2	H = 4.3 K = 4.8 D _{ISO} = 2.7	3.0	4.4	6.4		
	1241730-2	B	3	CuFe 2	PRETINNED vorverzinnt	0.2-0.5 FLR	1.15-1.6	E = 2.1 G = 2.1 D _{Dr} = 0.8	H = 4.3 K = 4.8 D _{ISO} = 2.6	2.5	4.4		6.4
UNSEALED/ ungeeicht	1241860-7	A	CuNi12Zn24	PLAIN Blank	0.5-1.0 FLR	1.4-2.1	E = 2.5 G = 2.7 D _{Dr} = 1.2	H = 3.2 K = 3.4 D _{ISO} = 1.8	3.0	4.4	6.4		
	1241860-2	A	CuFe 2	PRETINNED vorverzinnt	0.5-1.0 FLR	1.4-2.1	E = 2.5 G = 2.7 D _{Dr} = 1.2	H = 3.2 K = 3.4 D _{ISO} = 1.8	3.0	4.4	6.4		
	1241858-2	A	2	CuFe 2	PRETINNED vorverzinnt	0.2-0.5 FLR	1.15-1.6	E = 2.1 G = 2.1 D _{Dr} = 0.8	H = 2.9 K = 2.9 D _{ISO} = 1.4	2.5	4.4		6.4
	968052-1	B	1	CuFe 2	PRETINNED vorverzinnt	0.5-1.0 FLR	1.4-2.1	E = 2.5 G = 2.7 D _{Dr} = 1.2	H = 3.2 K = 3.4 D _{ISO} = 1.8	3.0	4.6		7
	969022-1	B	1	CuFe 2	1	0.5-1.0 FLR	1.4-2.1	E = 2.5 G = 2.7 D _{Dr} = 1.2	H = 3.2 K = 3.4 D _{ISO} = 1.8	3.0	4.6		7
	965914-2	C	5	CuFe 2	PRETINNED vorverzinnt	0.2-0.5 FLR	1.15-1.6	E = 2.1 G = 2.1 D _{Dr} = 0.8	H = 2.9 K = 2.9 D _{ISO} = 1.4	2.5	4.6		7
965914-1	C		CuFe 2	1	0.2-0.5 FLR	1.15-1.6	E = 2.1 G = 2.1 D _{Dr} = 0.8	H = 2.9 K = 2.9 D _{ISO} = 1.4	2.5	4.6	7		
TE ORDER NO. STRIP FORM Bandware	REV.	DESIGN Ausführung	MATERIAL Oberfläche	SURFACE Oberfläche	WIRE RANGE Drahtgrößen Bereich [mm ²]	INSULATION Isolations Ø [mm]	STRIP FROM WIRE CRIMP Drahtcrimp	INSUL.-CRIMP Iso.-Crimp Bandware	A	B	C		CRIMP DATA AND CRIMP TOOL Crimpdata u. Crimptwerkzeuge

- 1 BODY ELECTRO TIN PLATED OVER NICKEL 0.2 µm min. Kontaktkörper gal. verzinkt ueber Nickel 0.2 µm min. CONTACT AREA SELECTIV GOLD OVER NICKEL 0.8 µm min. Kontaktzone selectiv vergoldet ueber Nickel 0.8 µm min. WIRE CRIMP AREA ELECTRO TIN PLATED 1 µm min. Drahtcrimpbereich galv. verzinkt 1 µm min.
- 2 ACCORDING INSULATION DIA IS TO CHOOSE THE SINGLE WIRE SEAL Entsprechend dem Isolationsdurchmesser ist die Einzel-Dichtung auszuwaehlen
- 3 VARIANTS WITH GAP-SIZE 0.2mm Varianten mit Gap-Size 0.2mm
- 4 VARIANTS WITH GAP-SIZE 0.35mm Varianten mit Gap-Size 0.35mm
- 5 BODY ELECTRO TIN PLATED OVER NICKEL 0.2µm min. Kontaktkörper gal. verzinkt ueber Nickel 0.2µm min. CONTACT AREA SELECTIV GOLD OVER NICKEL 0.8 µm min. Kontaktzone selectiv vergoldet ueber Nickel 0.8 µm min. WIRE CRIMP AREA ELECTRO TIN PLATED 1µm min. Drahtcrimpbereich gal. verzinkt
- 6 ADDITIONAL INFORMATION FOR SINGLE WIRE SEAL VERISONS Zusätzliche Information fuer einzelgedichtete Varianten

SINGLE WIRE SEAL Einzel-Dichtung		
964972-1	1.9-2.1	YELLOW gelb
963530-1	1.4-1.9	GREY grau
964971-1	1.2-1.6	RED rot
ORDER No. Bestell-Nr.	INSULATION Ø Isolations Ø	COLOUR Farbe



THIS DRAWING IS A CONTROLLED DOCUMENT.		OWN G. Abraham	12NOV2001	TE Connectivity
DIMENSIONS: mm		CHK M. Bleicher	12NOV2001	
TOLERANCES UNLESS OTHERWISE SPECIFIED:		APPV T. Meierhoefer	16NOV2001	NAME PRODUCT GROUP DRAWING FOR MICRO TIMER 3 CONTACT Produkt-Gruppen-Zeichnung fuer Micro Timer 3
MATERIAL		FINISH	APPROVALS	
APPLICATION SPEC		108-18386	114-18081	SIZE A1
WEIGHT		00779	1241916	RESTRICTED TO
Customer Drawing		SCALE 6:1	SHEET 1 of 1	REV B1