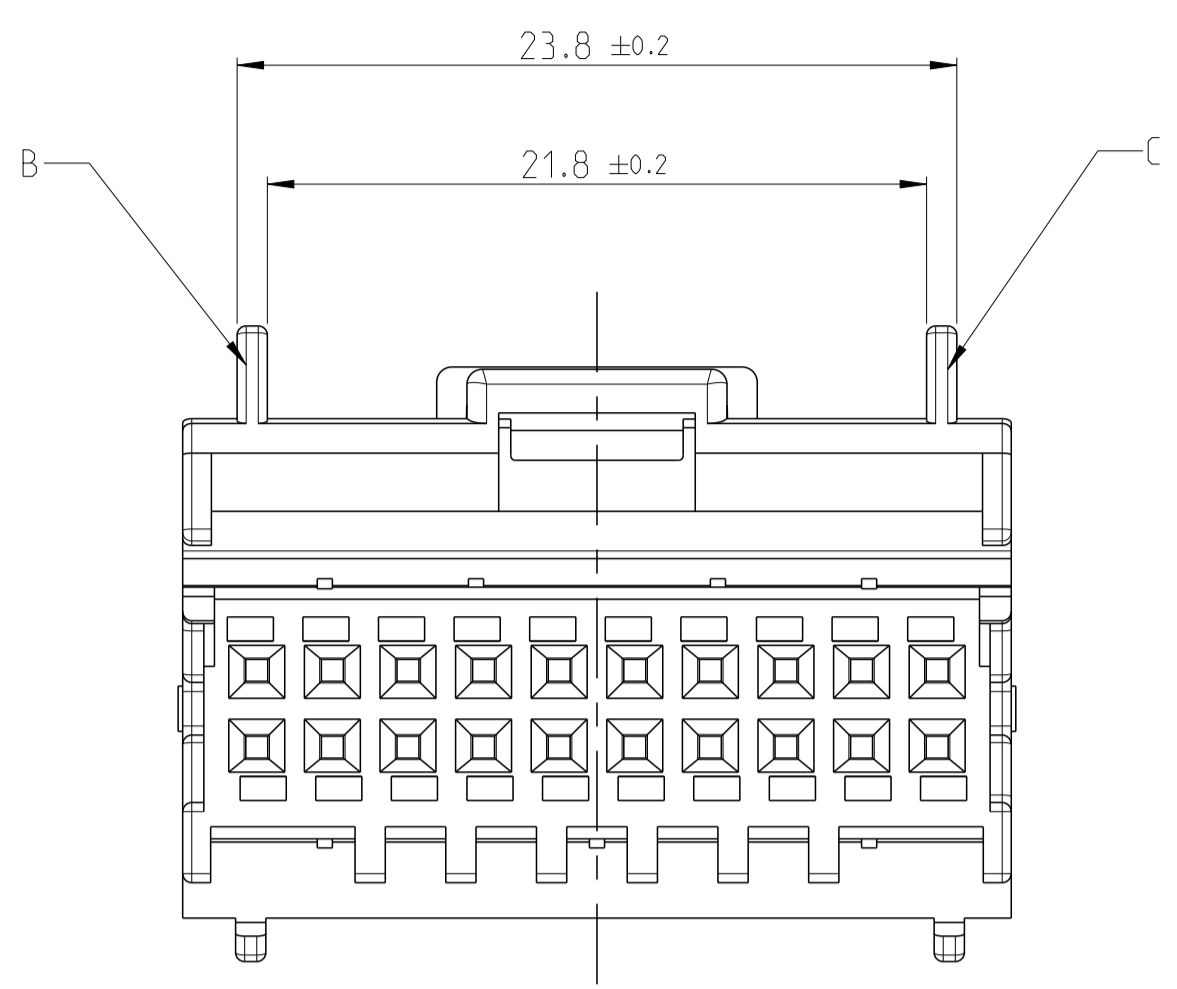
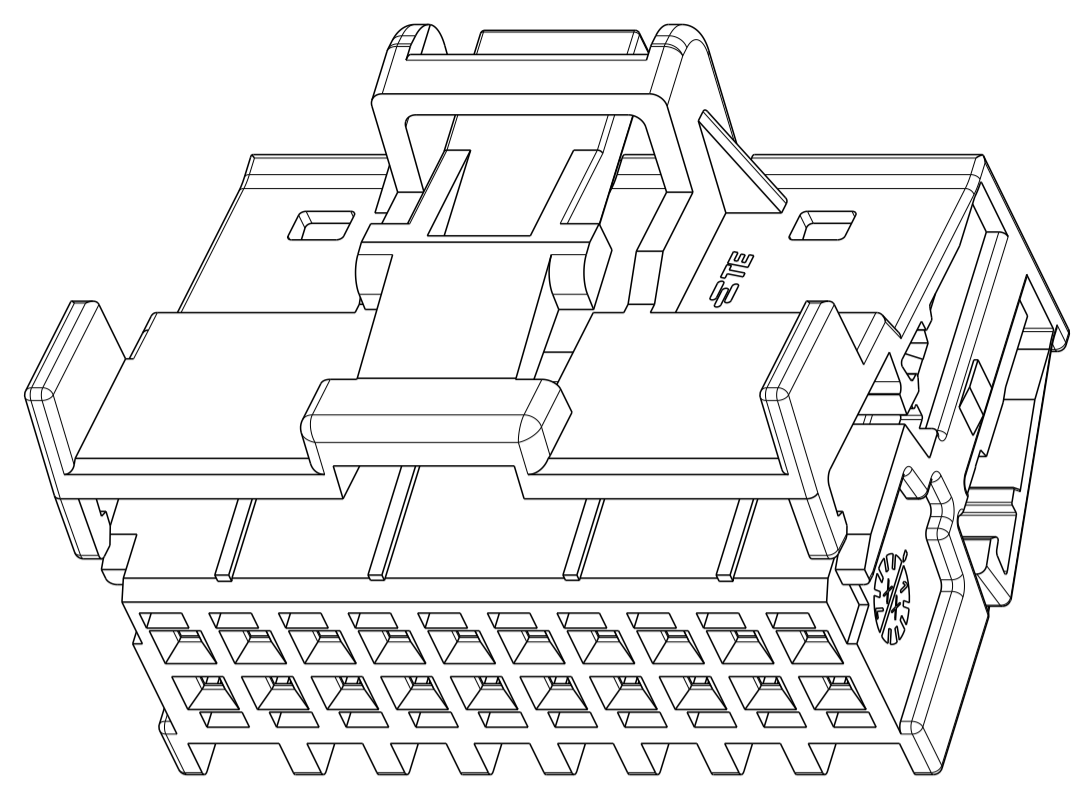
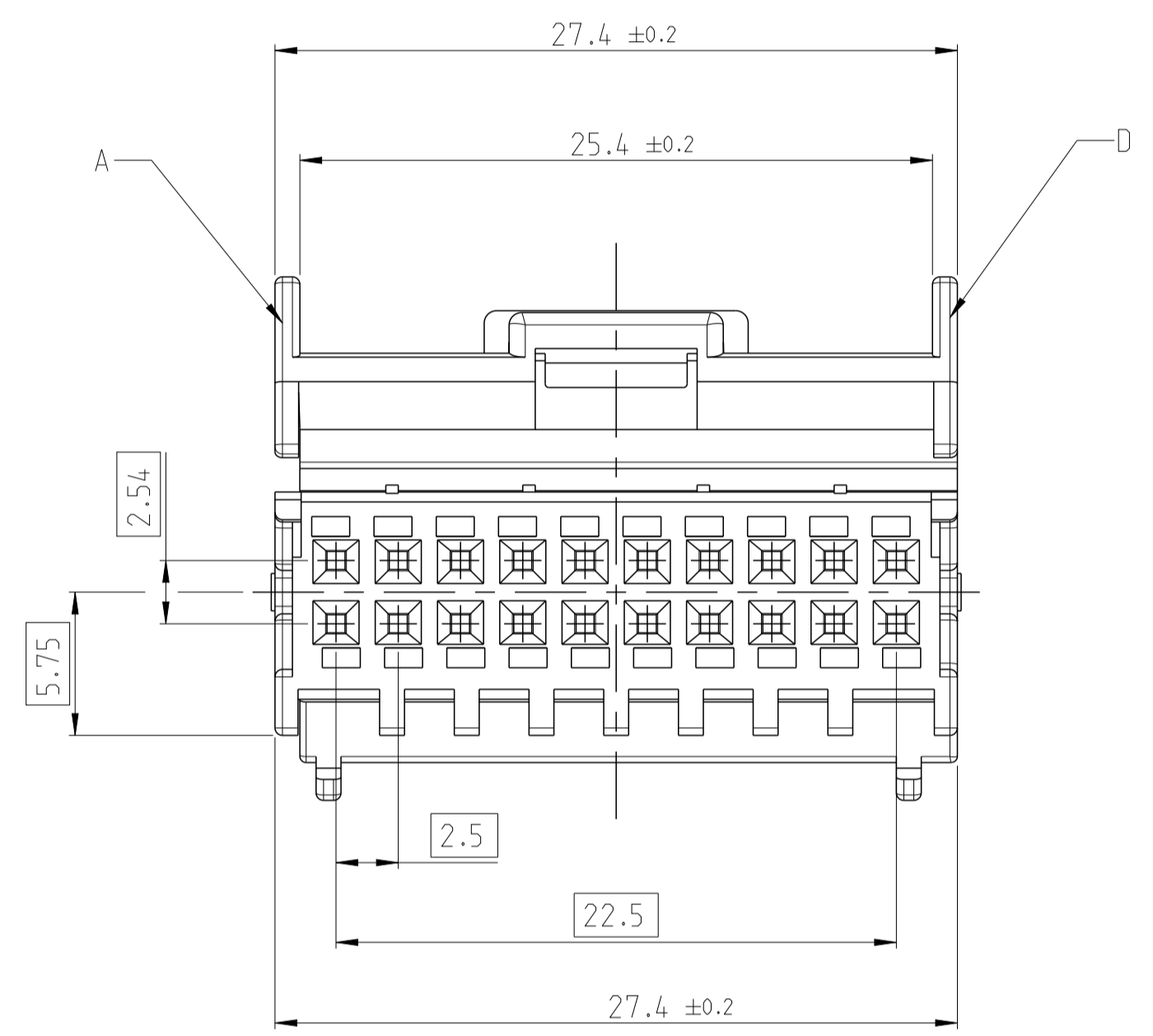


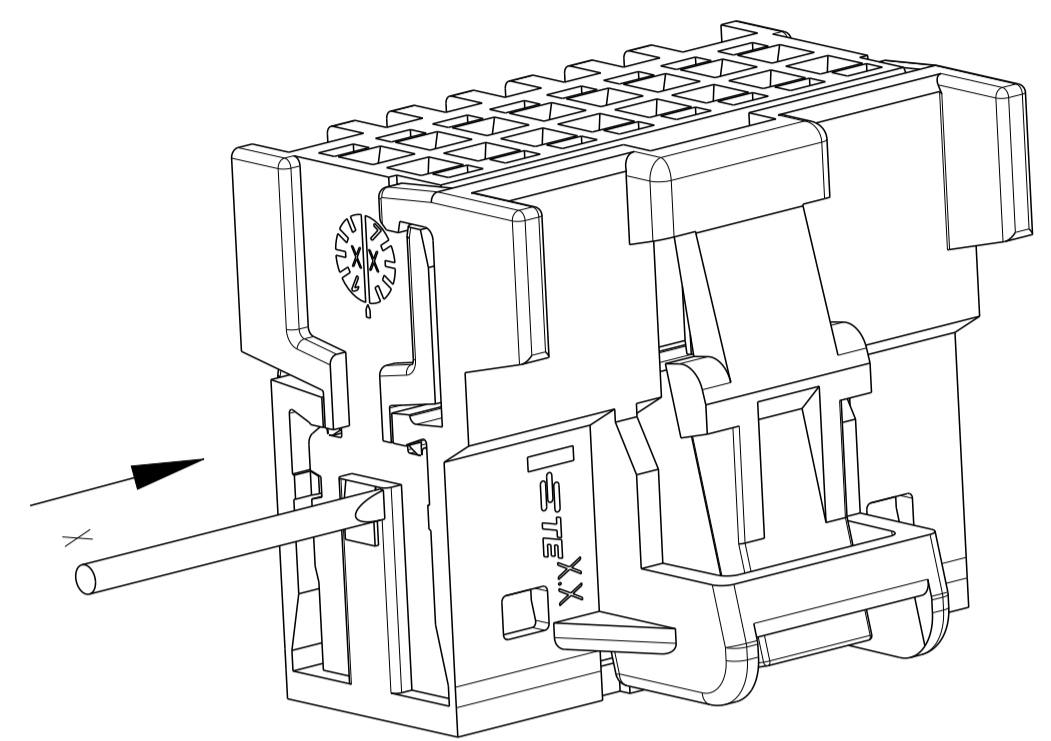
2 CODING B.C  
 2329592-2 AS SHOWN



1 CODING A.D  
 2329592-1 AS SHOWN



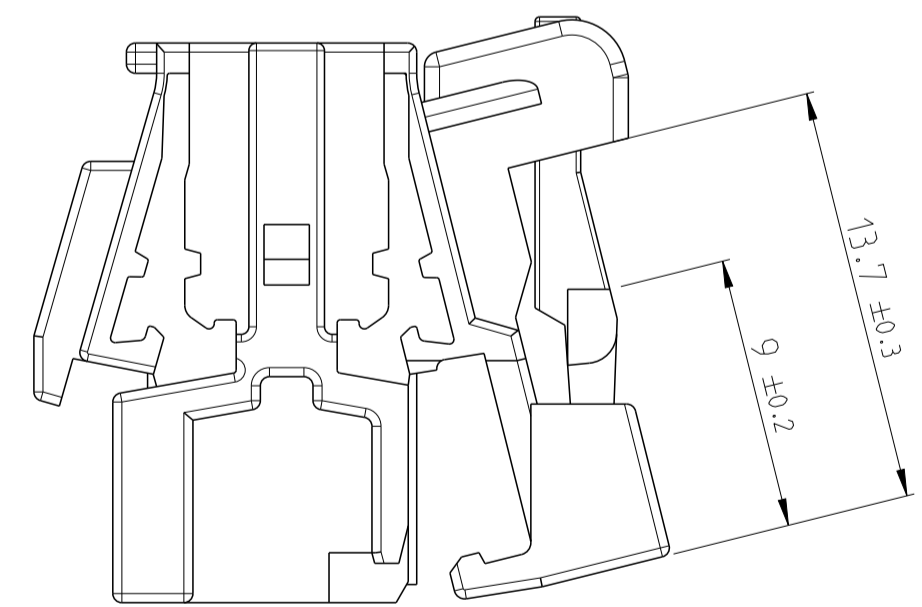
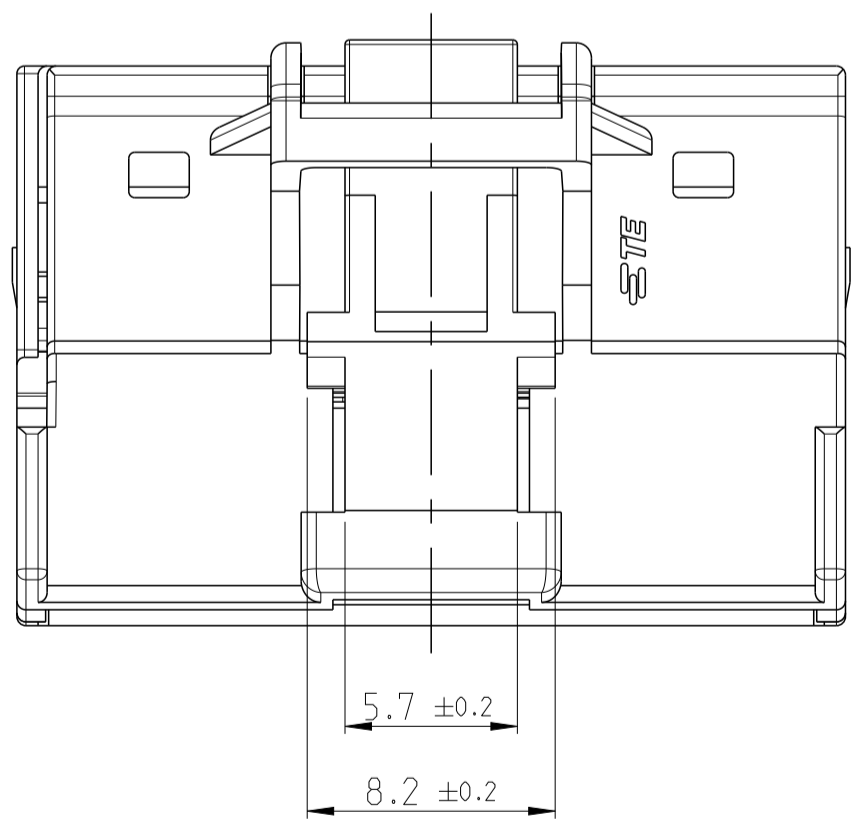
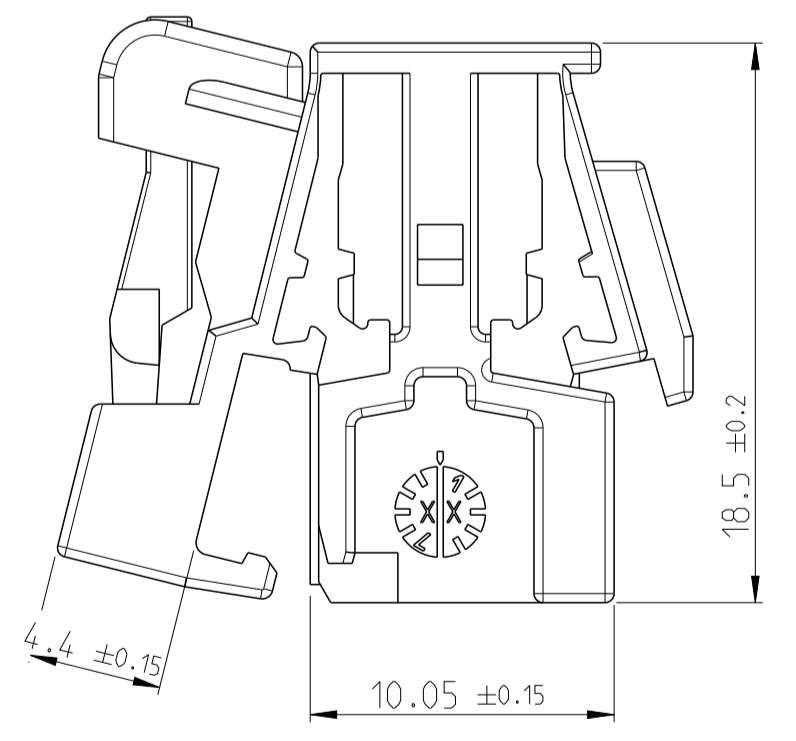
B RETAINER CLOSED PICTURED



6 OPENING GUIDE: TO OPEN THE LOCKED RETAINER, USE A Ø 1x0.18MM SCREWDRIVER AND PUSH IT IN THE SHOWN OPENING.

NOTES

- MATING PART EXECUTION ACCORDING TO TE INTERFACE 114-101074
  - SUITABLE CONTACT 1355717, 928999, 963715
  - SUITABLE MATING HOUSING 2329531/2330352
  - MATERIAL REMOVAL OPTIONAL IN EXECUTION AND POSITION ACCORDING TO MANUFACTURE POSSIBLE
  - PACKAGE: LOOSE PIECE IN CARTON BOX
- 6 CONDITION ON DELIVERY:  
 SECONDARY LOCK DEVICE SHOULD BE IN PRELOCK POSITION  
 --IF IN ENDOCK POSITION AFTER TRANSPORTATION,  
 PLEASE REOPEN IT IN ACCORDANCE THE OPENING



TE-PART NO	REV.	COD.	MATERIAL	COLOUR	RAL	VOLUME [cm <sup>3</sup> ]	WEIGHT [g]	POS.
2329592-4	B	B.D	PBT-GF10	BLUE	5012	2.984	4.09	4
2329592-3	B	A.C	PBT-GF10	GREEN	6018	2.984	4.09	3
2329592-2	B	B.C	PBT-GF10	BROWN	1011	2.984	4.09	2
2329592-1	B	A.D	PBT-GF10	BLACK	9011	2.984	4.09	1

THIS DRAWING IS A CONTROLLED DOCUMENT.		OWN T.DONG 26FEB2018	
DIMENSIONS: mm		CHK E.JIANG 26FEB2018	
TOLERANCES UNLESS OTHERWISE SPECIFIED		APVD LYJIN 26FEB2018	
0 PLC ± 1 PLC ± 2 PLC ± 3 PLC ± 4 PLC ± ANGLES ± FINISH ±		NAME - PRODUCT SPEC - 108-101528 APPLICATION SPEC - SIZE CAGE CODE DRAWING NO - RESTRICTED TO - WEIGHT - CUSTOMER DRAWING	
MATERIAL SEE TABLE	SEE TABLE	SCALE 4:1	SHEET 1 OF 1 REV B